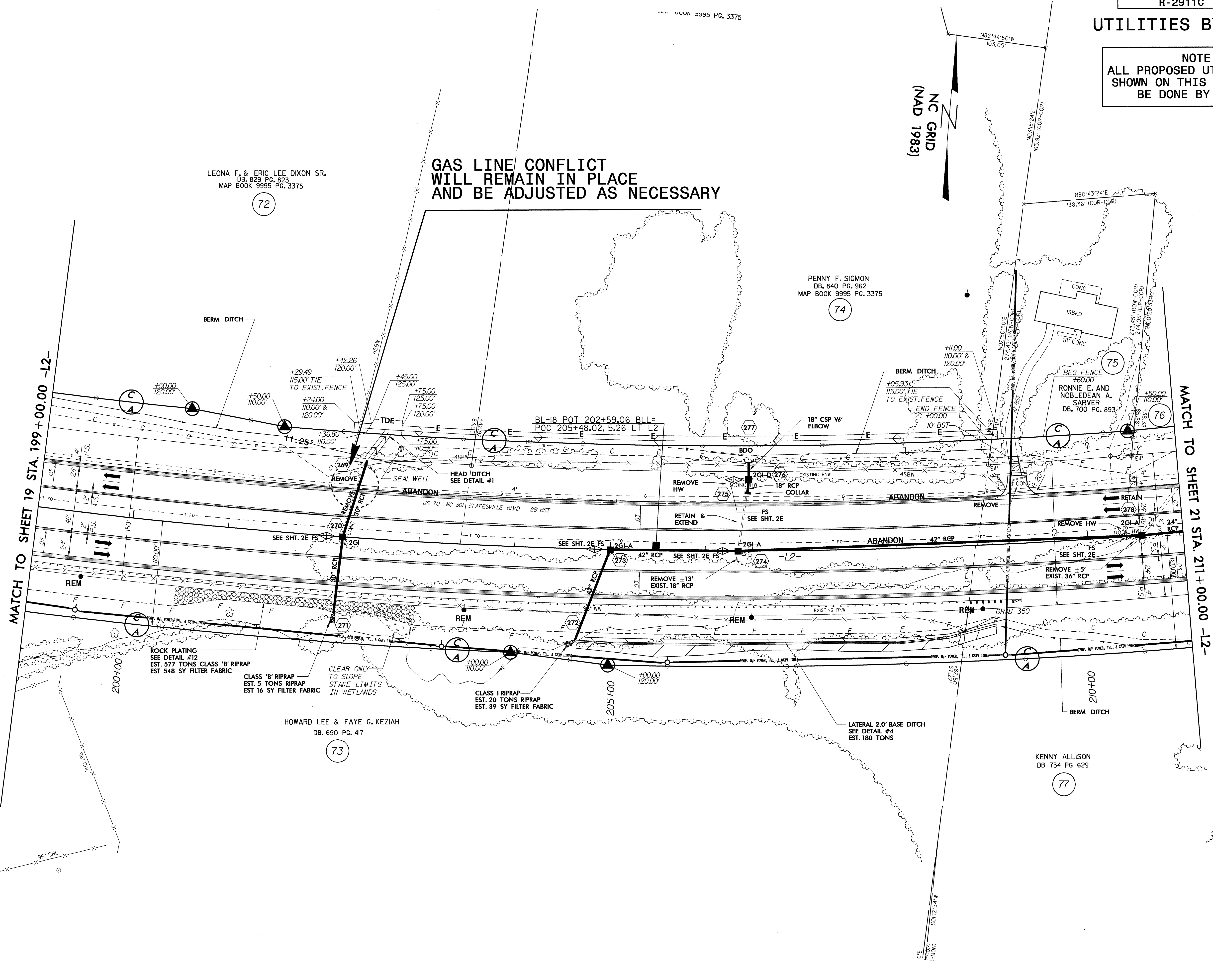


UTILITIES BY OTHERS

NOTE:
ALL PROPOSED UTILITY WORK
SHOWN ON THIS SHEET WILL
BE DONE BY OTHERS

NC GRID
(NAD 1983)

**GAS LINE CONFLICT
WILL REMAIN IN PLACE
AND BE ADJUSTED AS NECESSARY**



MATCH TO SHEET 19 STA. 199 + 00.00 -L2-

MATCH TO SHEET 21 STA. 211 + 00.00 -L2-

LEONA F. & ERIC LEE DIXON SR.
DB. 829 PG. 823
MAP BOOK 9995 PG. 3375

PENNY F. SIGMON
DB. 840 PG. 962
MAP BOOK 9995 PG. 3375

RONNIE E. AND NOBLEDEAN A. SARVER
DB. 700 PG. 893

HOWARD LEE & FAYE G. KEZIAH
DB. 690 PG. 417

KENNY ALLISON
DB. 734 PG. 629

ROCK PLATING
SEE DETAIL #12
EST. 577 TONS CLASS 'B' RIPRAP
EST. 548 SY FILTER FABRIC

CLASS 'B' RIPRAP
EST. 5 TONS RIPRAP
EST. 16 SY FILTER FABRIC

CLEAR ONLY TO
TO SLOPE
STAKE LIMITS
IN WETLANDS

CLASS I RIPRAP
EST. 20 TONS RIPRAP
EST. 39 SY FILTER FABRIC

LATERAL 2.0' BASE DITCH
SEE DETAIL #4
EST. 180 TONS

8/17/99

24-AUG-2004 15:35
F:\Utilities\RD\U0-18\Drawings\U0-18.dwg
Plot Date: 8/17/99