

8/17/99

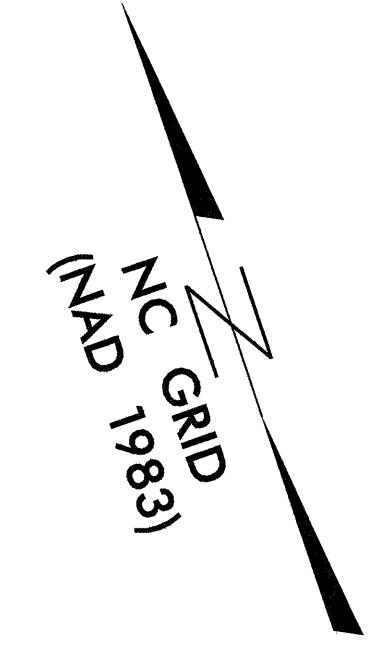
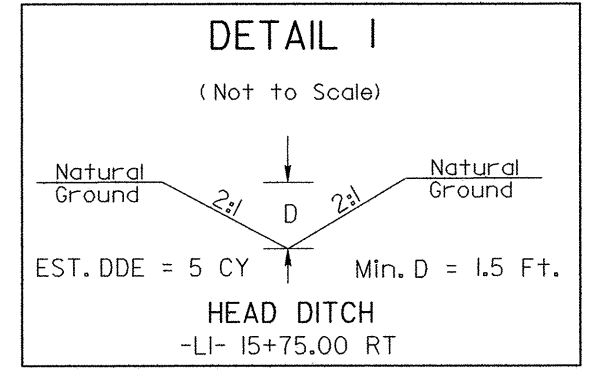
REVISIONS

DATE: 9/2/99
TIME: 2:31:32 PM
C:\ncad\2911c\Roadway\Proj\2911c.RDY.FSH_04.DGN

DATUM DESCRIPTION

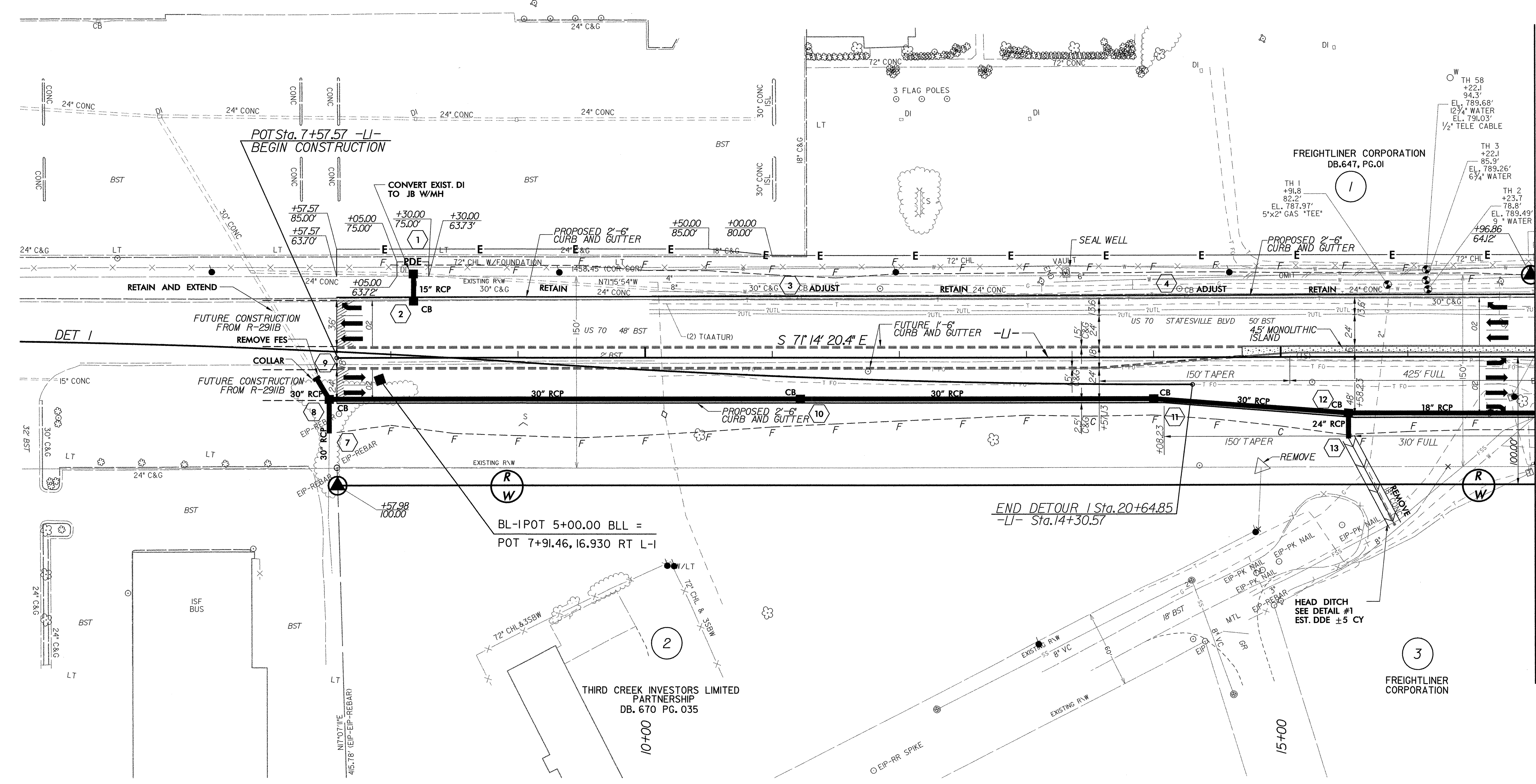
THE LOCALIZED COORDINATE SYSTEM DEVELOPED FOR THIS PROJECT IS BASED ON THE STATE PLANE COORDINATES ESTABLISHED BY NCDOT FOR MONUMENT "384 JAS" WITH STATE PLANE GRID COORDINATES OF NORTHING: 724643.8657(Ft) EASTING: 1507152.2547(Ft) THE AVERAGE COMBINED GRID FACTOR USED ON THIS PROJECT (GROUND TO GRID) IS: 0.999873400 THE N.C. LAMBERT GRID BEARING AND LOCALIZED HORIZONTAL GROUND DISTANCE FROM "384 JAS" TO -L1- STATION 7+57.57 IS N88°46'02.3" W, 9,394.16 FEET.

ALL LINEAR DIMENSIONS ARE LOCALIZED HORIZONTAL DISTANCES VERTICAL DATUM USED IS NGVD 29



PROJECT REFERENCE NO. R-2911C	SHEET NO. 4
RW SHEET NO.	
ROADWAY DESIGN ENGINEER 	HYDRAULICS ENGINEER
WILBUR SMITH ASSOCIATES P.O. BOX 2478 RALEIGH, NC 27601	SUNGATE DESIGN GROUP 915-A JONES FRANKLIN RD. RALEIGH, NC 27604

- NOTES**
- FOR PROFILE OF: L1 SEE SHEET NO: 23
 - FOR DETOUR: -L1- SEE SHEET NO: 2C



MATCH TO SHEET 5 STA. 17+00.00 -L1-