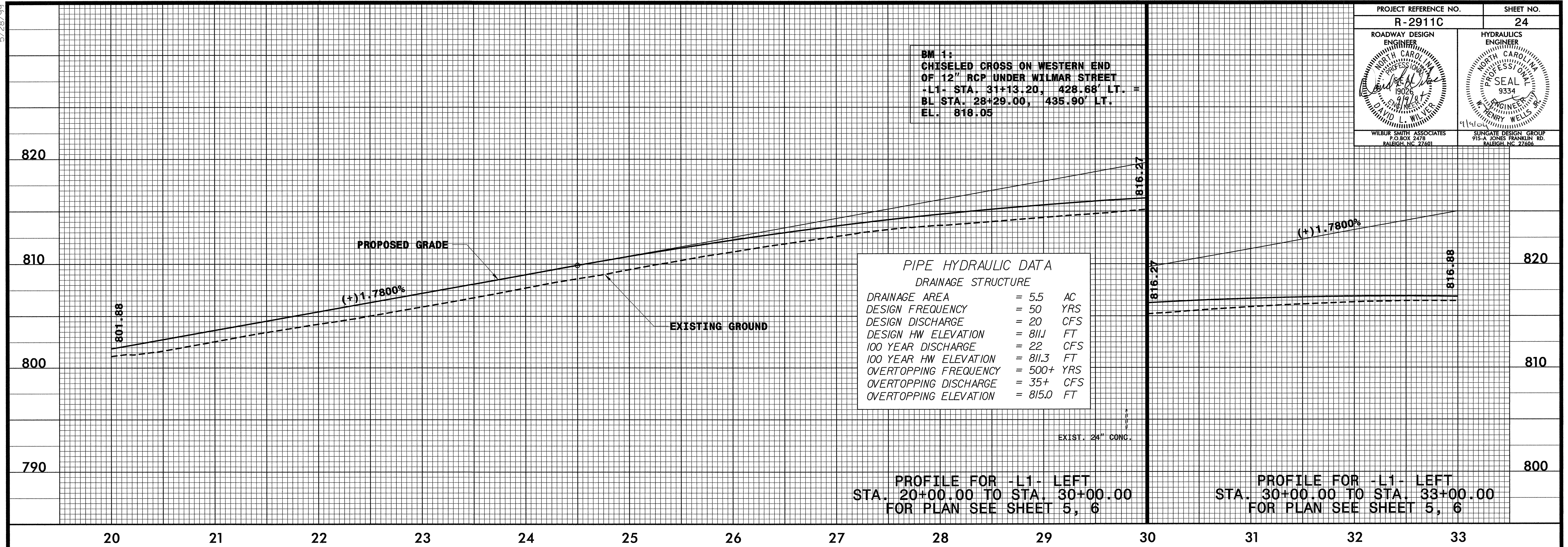


5/28/99

PROJECT REFERENCE NO. R-2911C		SHEET NO. 24	
ROADWAY DESIGN ENGINEER DAVID L. WILBUR 19025 9/19/81 WILBUR SMITH ASSOCIATES P.O. BOX 2478 RALEIGH, NC 27601		HYDRAULICS ENGINEER DAVID L. WILBUR 19025 9/19/81 SUNGATE DESIGN GROUP 915-A JONES FRANKLIN RD. RALEIGH, NC 27604	

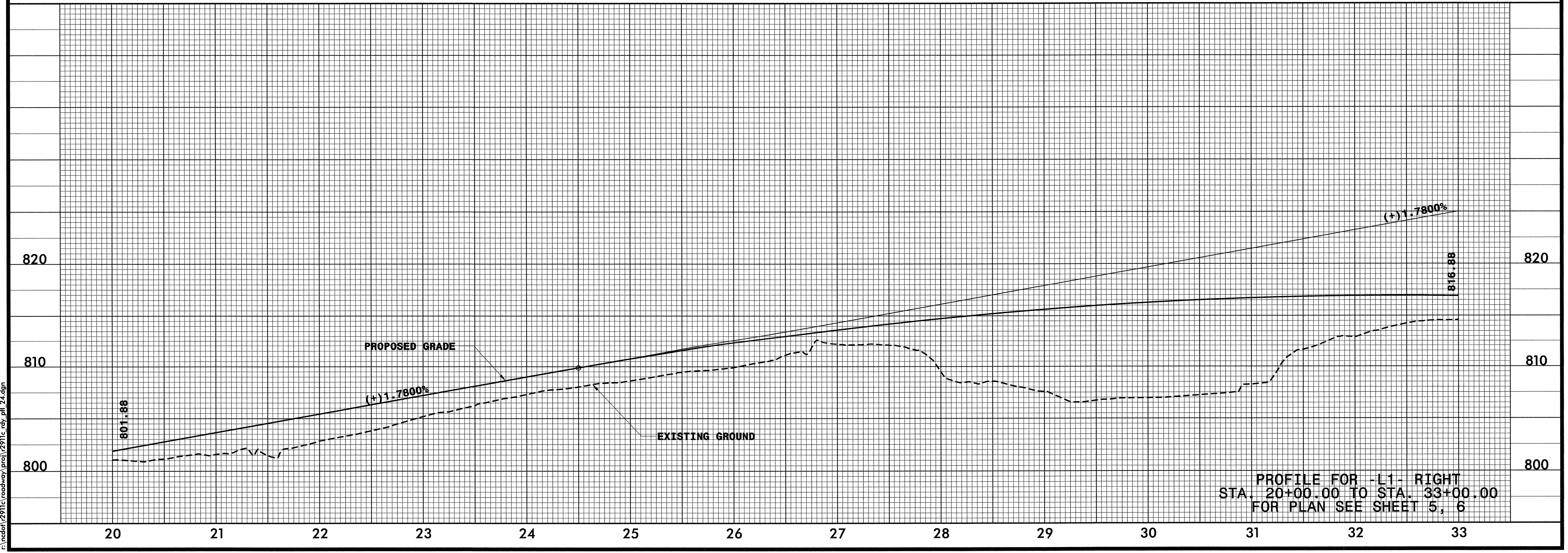
BM 1:
CHISELED CROSS ON WESTERN END
OF 12" RCP UNDER WILMAR STREET
 -L1- STA. 31+13.20, 428.68' LT. =
 BL STA. 28+29.00, 435.90' LT. =
 EL. 818.05

PIPE HYDRAULIC DATA	
DRAINAGE STRUCTURE	
DRAINAGE AREA	= 5.5 AC
DESIGN FREQUENCY	= 50 YRS
DESIGN DISCHARGE	= 20 CFS
DESIGN HW ELEVATION	= 811J FT
100 YEAR DISCHARGE	= 22 CFS
100 YEAR HW ELEVATION	= 811.3 FT
OVERTOPPING FREQUENCY	= 500+ YRS
OVERTOPPING DISCHARGE	= 35+ CFS
OVERTOPPING ELEVATION	= 815.0 FT



PROFILE FOR -L1- LEFT
 STA. 20+00.00 TO STA. 30+00.00
 FOR PLAN SEE SHEET 5, 6

PROFILE FOR -L1- LEFT
 STA. 30+00.00 TO STA. 33+00.00
 FOR PLAN SEE SHEET 5, 6



PROFILE FOR -L1- RIGHT
 STA. 20+00.00 TO STA. 33+00.00
 FOR PLAN SEE SHEET 5, 6

DATE: 9/7/2004
 BY: [unclear]
 FILE: [unclear]\2911c\roadway\proj\2911c_rdy_ofi_24.dgn