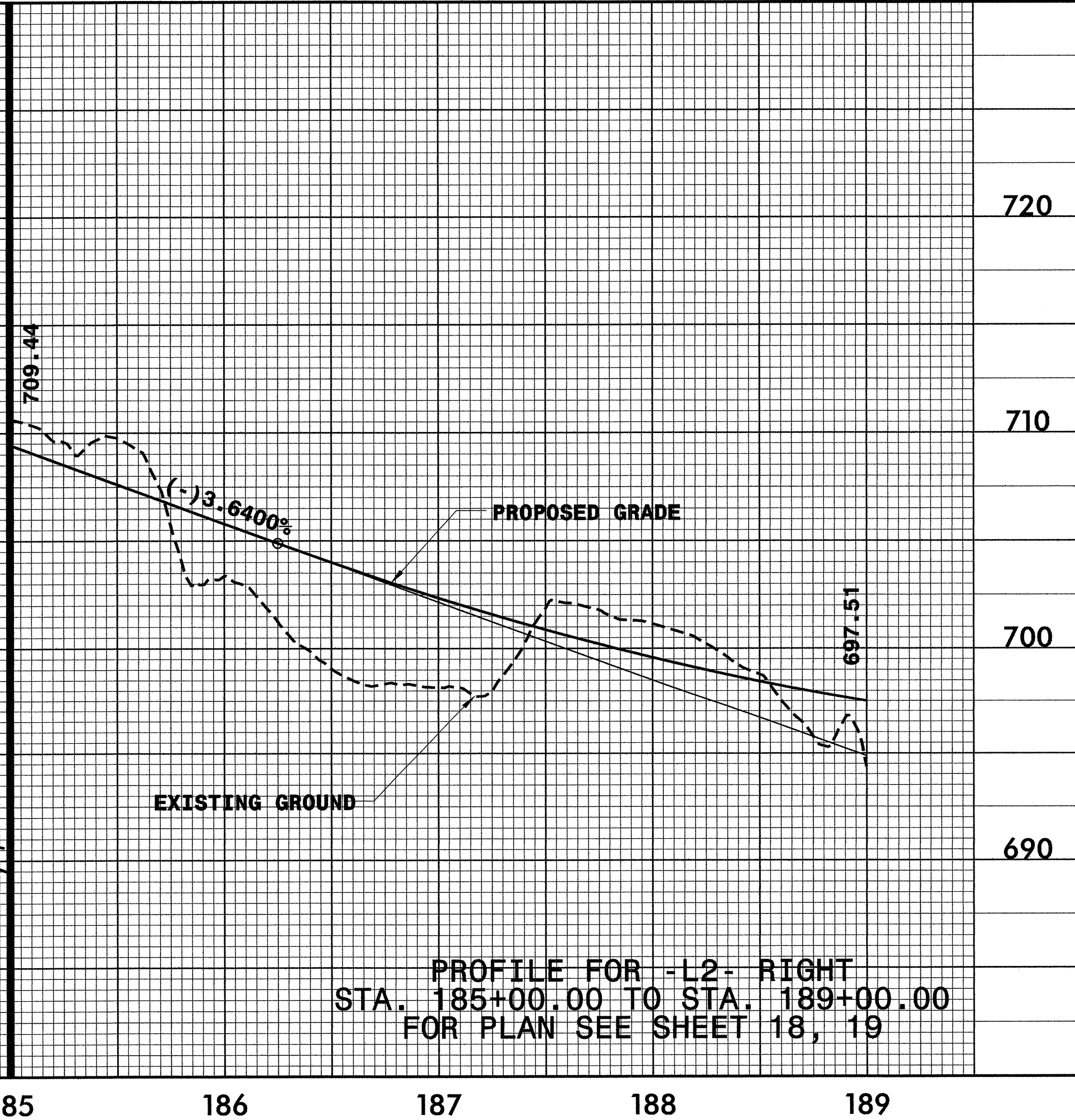
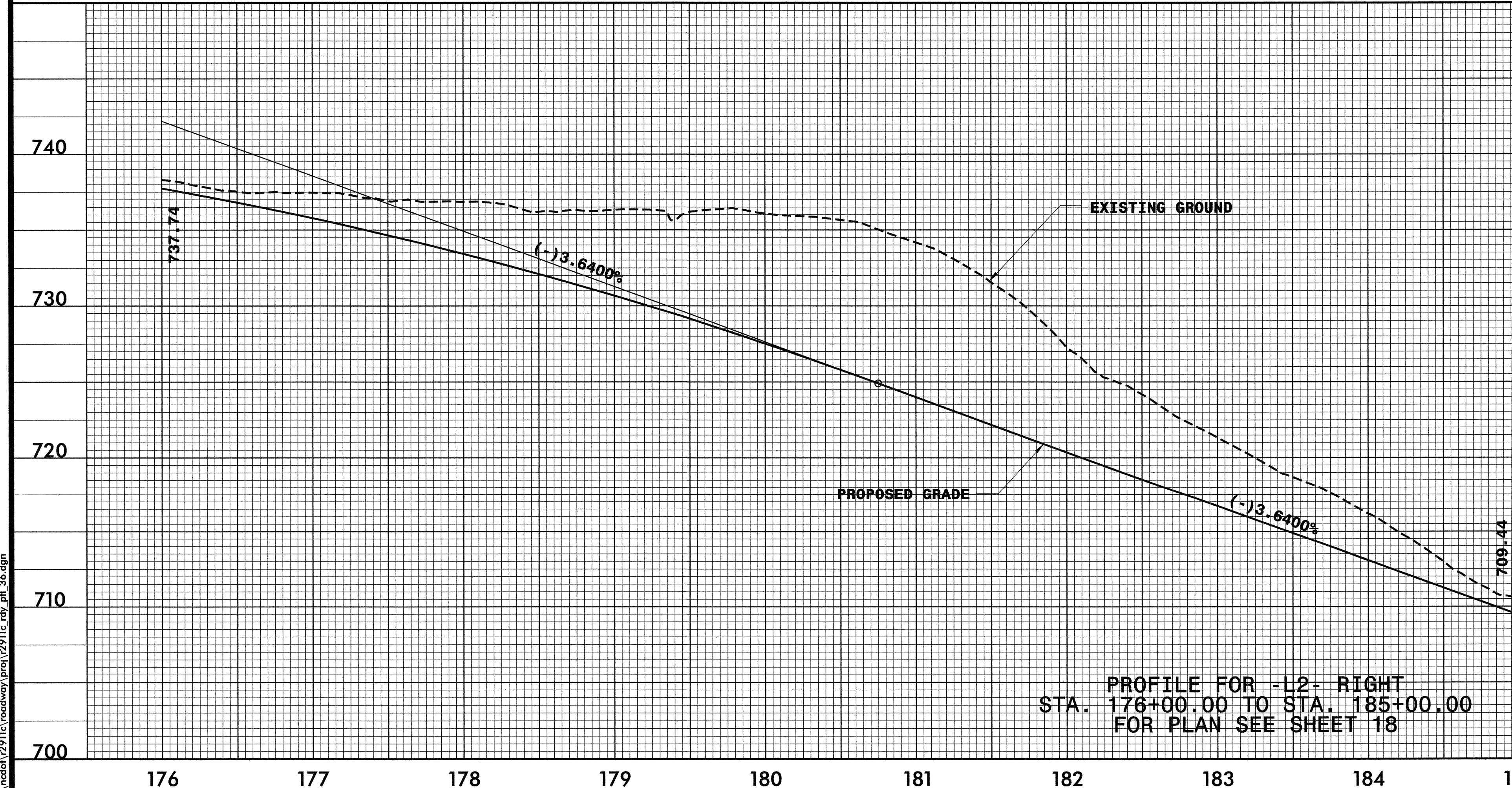
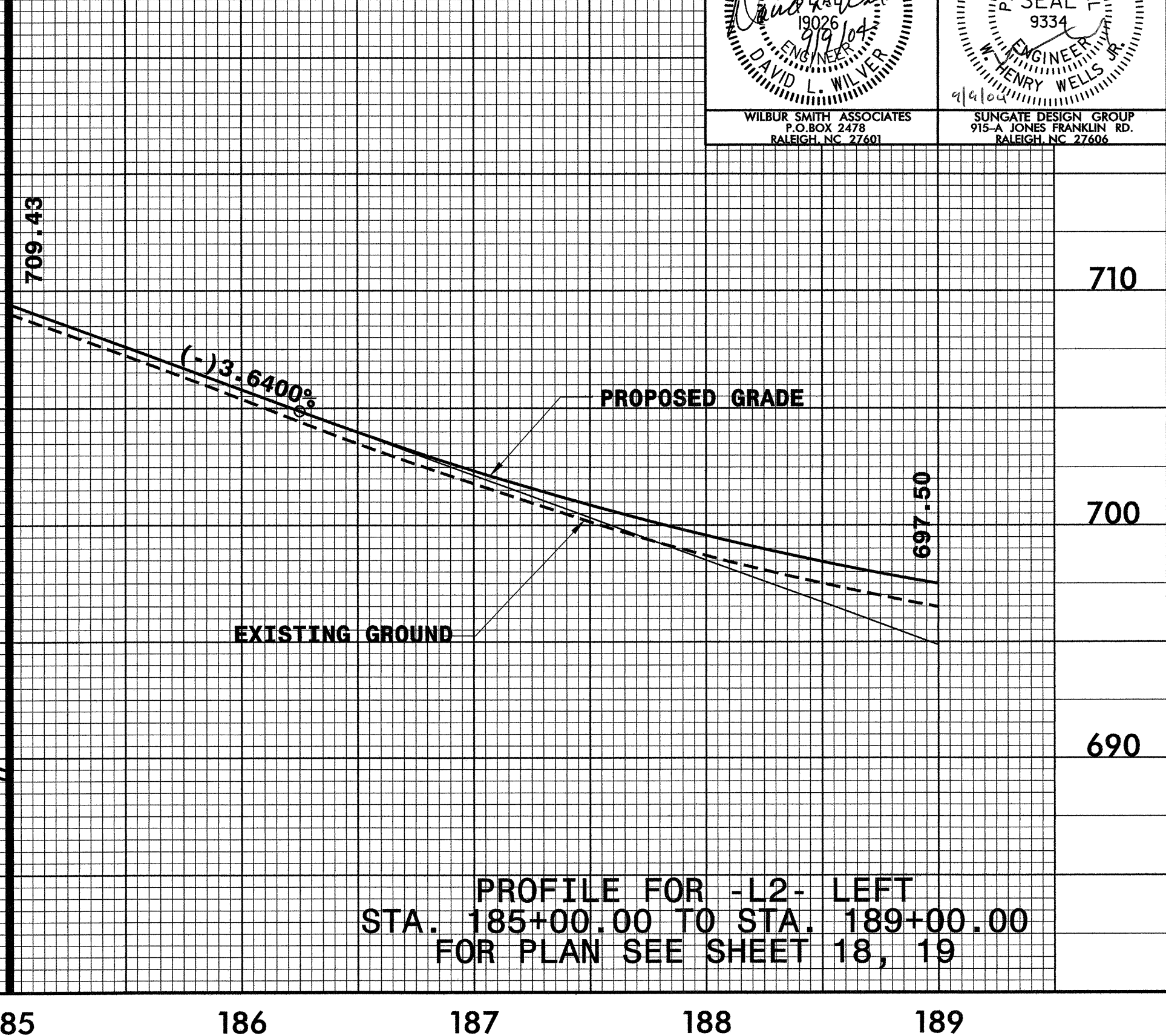
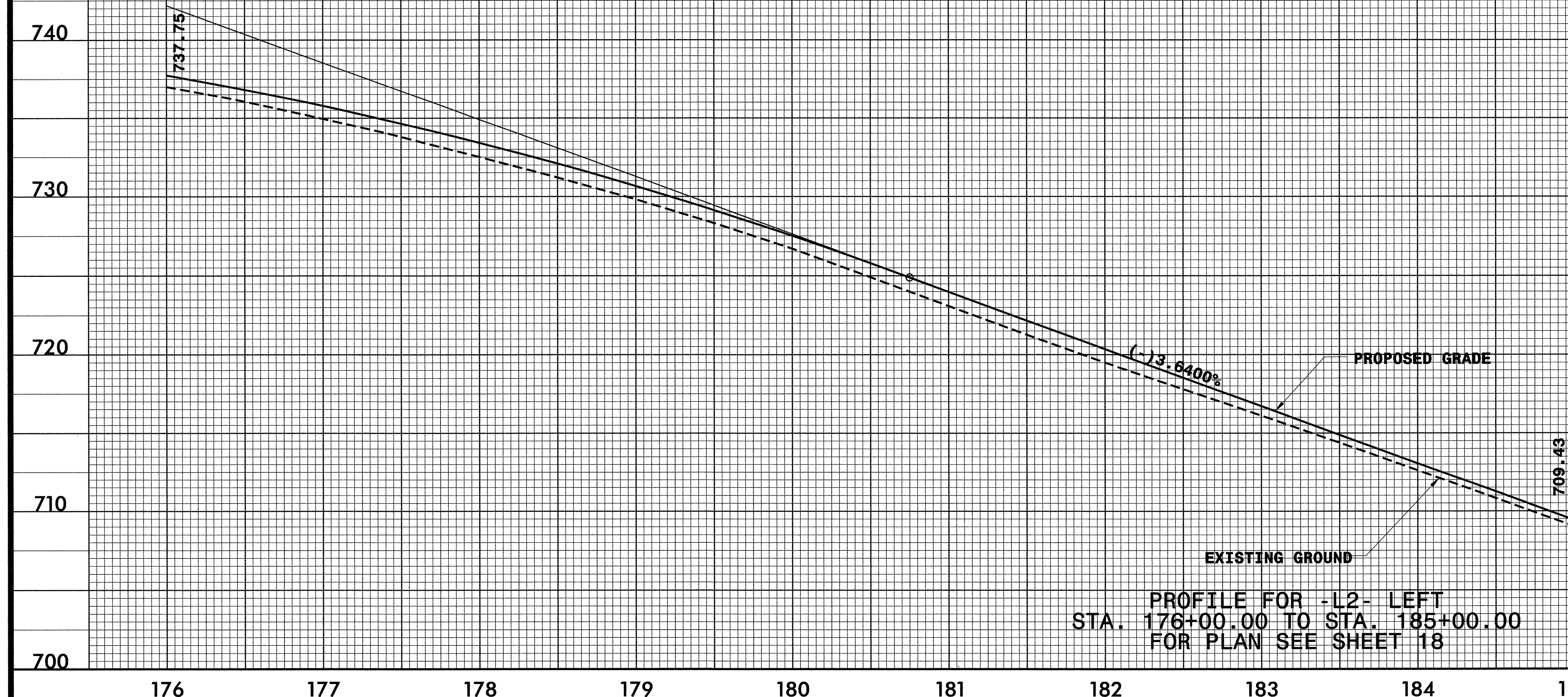


5/25/99

| | |
|--|--|
| PROJECT REFERENCE NO. R-2911C | SHEET NO. 36 |
| ROADWAY DESIGN ENGINEER NORTH CAROLINA PROFESSIONAL SEAL 19026 DAVID L. WILBUR | HYDRAULICS ENGINEER NORTH CAROLINA PROFESSIONAL SEAL 9334 HENRY WELLS |
| WILBUR SMITH ASSOCIATES P.O. BOX 2479 RALEIGH, NC 27601 | SUNGATE DESIGN GROUP 915-A JONES FRANKLIN RD. RALEIGH, NC 27606 |



DATE 9/2/04
TIME 9:26:04 PM
C:\ncd\2911c\roadway\proj\2911c.rdy pfl 36.dgn