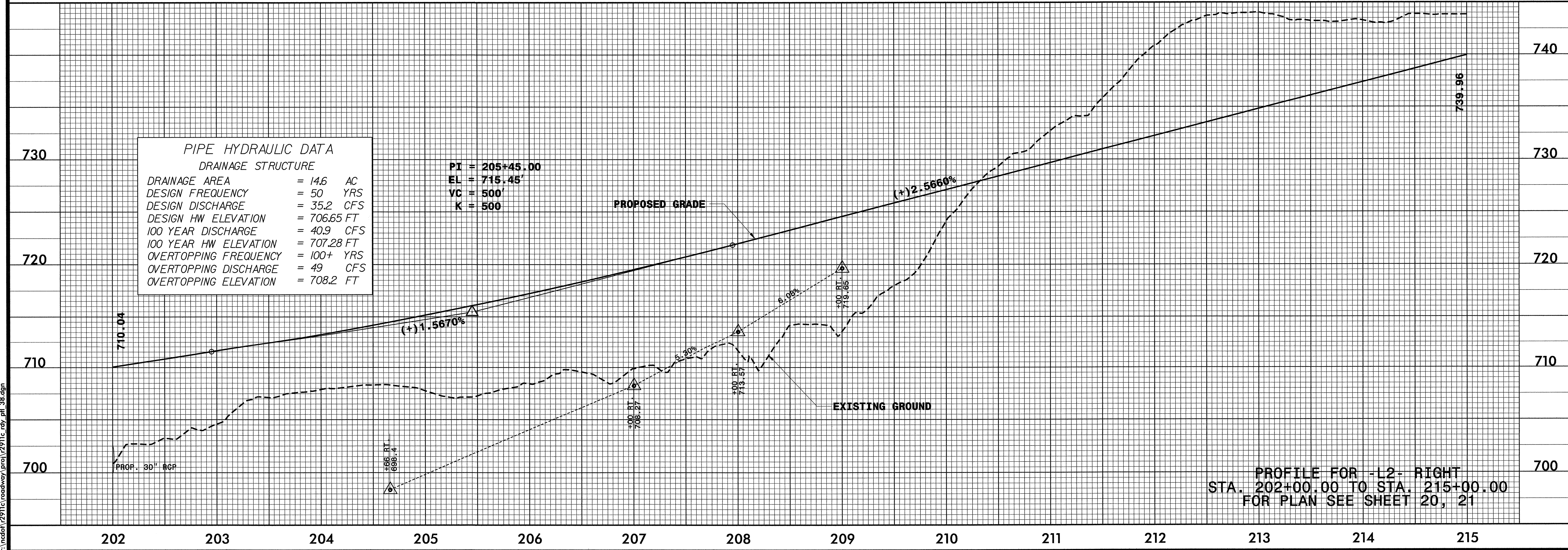
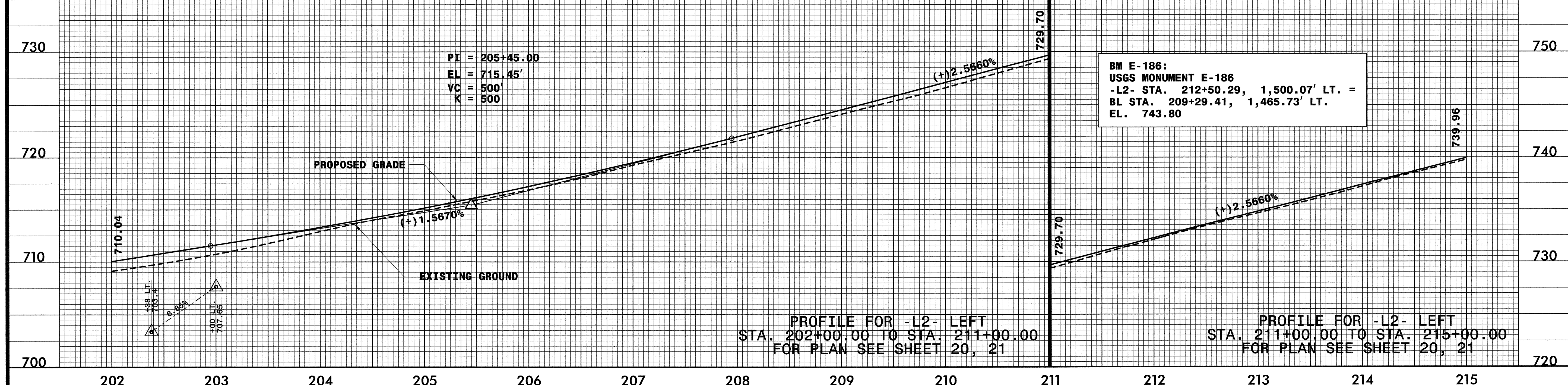


5/28/99

BM 6:
RR SPIKE IN BASE OF 24" OAK
-L2- STA. 203+55.92, 318.34' LT. =
BL STA. 200+47.46, 296.76' LT.
EL. 719.23

PROJECT REFERENCE NO. R-2911C	SHEET NO. 38
ROADWAY DESIGN ENGINEER NORTH CAROLINA PROFESSIONAL SEAL 19026 DAVID L. WILBUR	HYDRAULICS ENGINEER NORTH CAROLINA PROFESSIONAL SEAL 9334 HENRY WELLS
WILBUR SMITH ASSOCIATES P.O. BOX 2478 RALEIGH, NC 27601	SUNGATE DESIGN GROUP 915-A JONES FRANKLIN RD. RALEIGH, NC 27606



DATE: 9/7/2004 PM
C:\ncad\2911c\roadway\proj\2911c_rdy_pfl_38.dgn