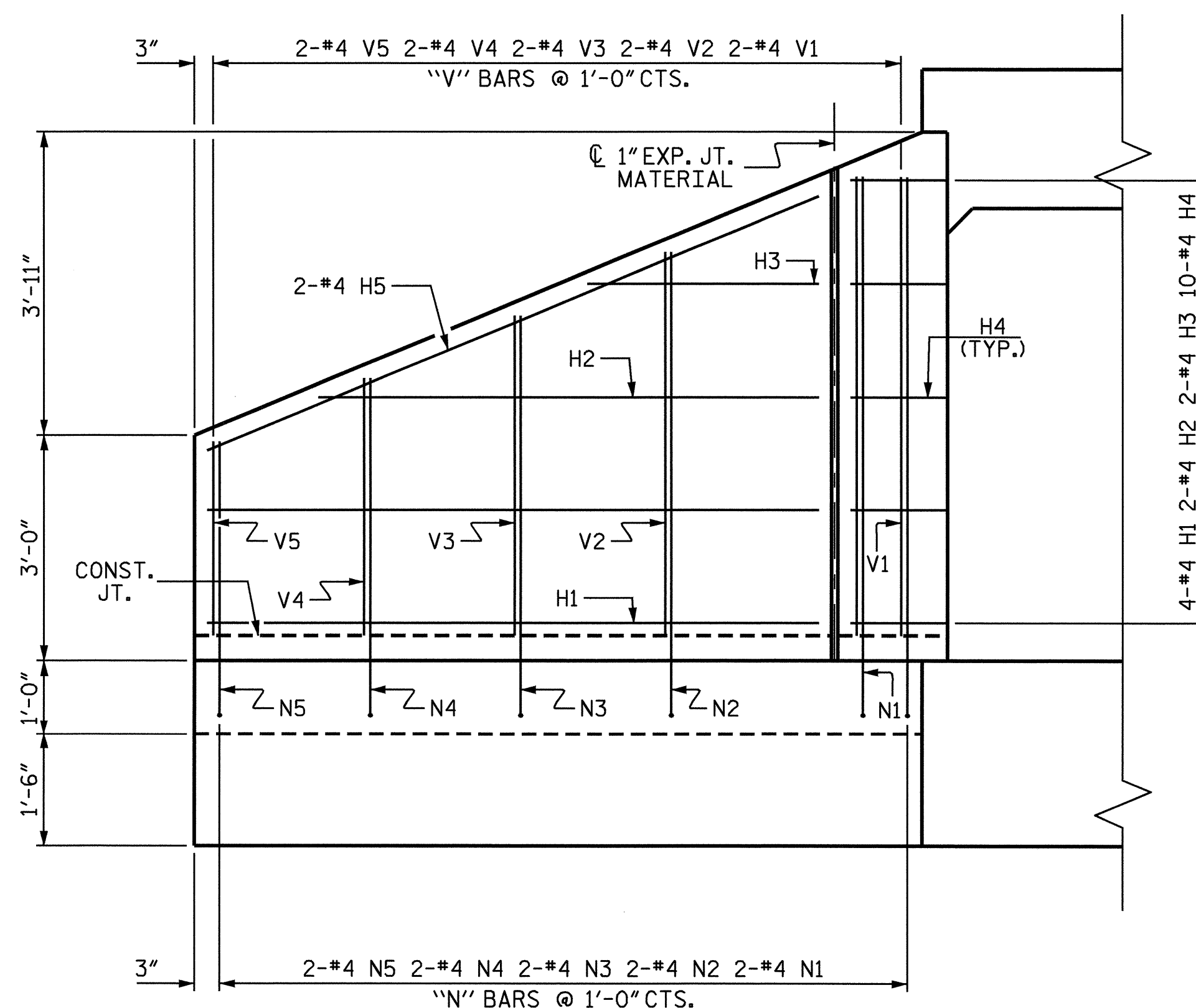
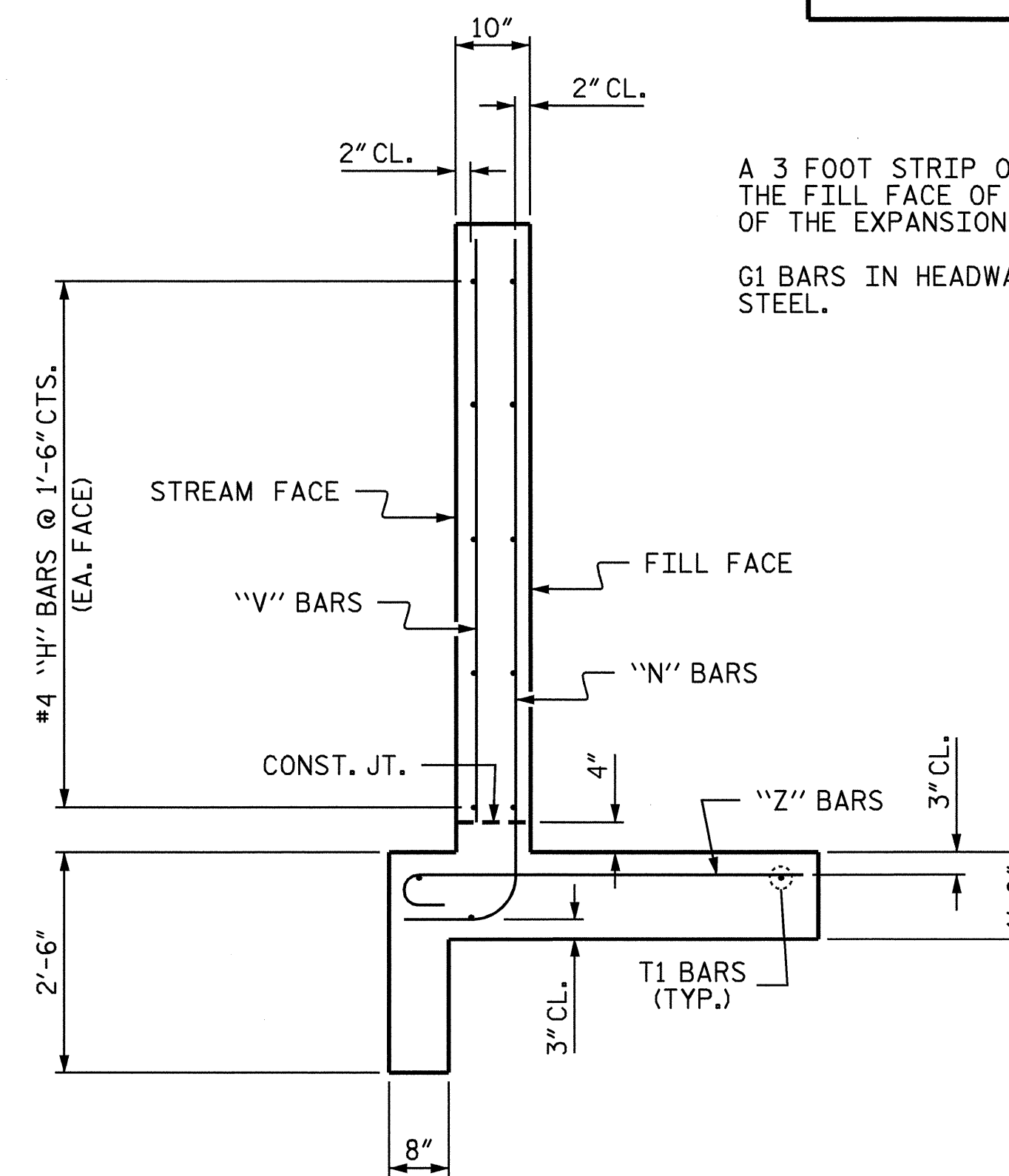


PLAN W1



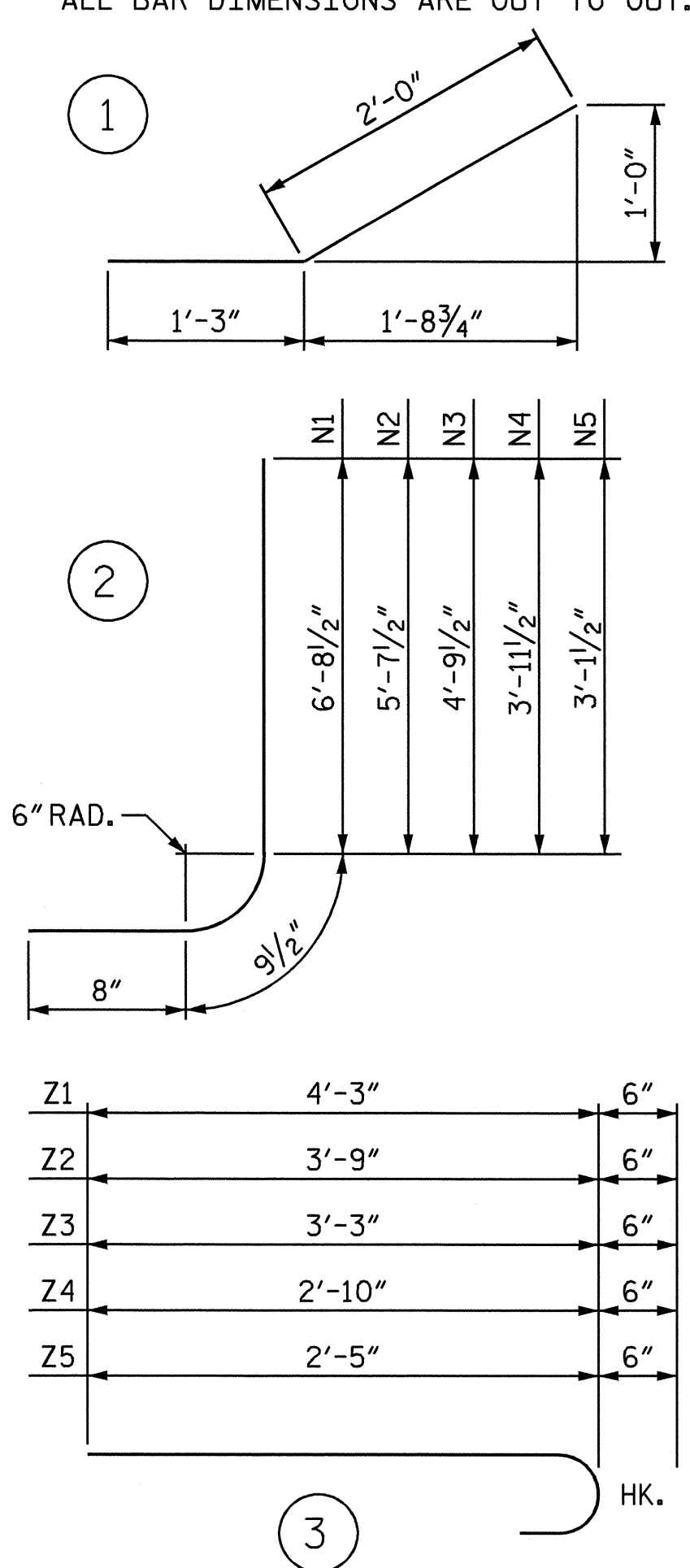
ELEVATION W1



TYPICAL WING SECTION

BAR TYPES

ALL BAR DIMENSIONS ARE OUT TO OUT.



BILL OF MATERIAL

BAR	NO.	SIZE	TYPE	LENGTH	WEIGHT
H1	8	#4	STR	8'-1"	43
H2	4	#4	STR	6'-8"	18
H3	4	#4	STR	3'-1"	8
H4	20	#4	1	3'-3"	43
H5	4	#4	STR	8'-9"	23
N1	4	#4	2	8'-2"	22
N2	4	#4	2	7'-1"	19
N3	4	#4	2	6'-3"	17
N4	4	#4	2	5'-5"	14
N5	4	#4	2	4'-7"	12
T1	6	#5	STR	10'-0"	63
V1	4	#4	STR	6'-1"	16
V2	4	#4	STR	5'-1"	14
V3	4	#4	STR	4'-3"	11
V4	4	#4	STR	3'-5"	9
V5	4	#4	STR	2'-7"	7
Z1	4	#4	3	4'-9"	13
Z2	6	#4	3	4'-3"	17
Z3	4	#4	3	3'-9"	10
Z4	4	#4	3	3'-4"	9
Z5	4	#4	3	2'-11"	8

REINFORCING STEEL FOR 2 WINGS 396 LBS.

CLASS A CONCRETE

2 WINGS	6.9 C.Y.
HEADWALL	0.5 C.Y.
CURTAINWALL	0.5 C.Y.
2 EDGE BEAMS	0.6 C.Y.
TOTAL	8.5 C.Y.

NOTES

A 3 FOOT STRIP OF FILTER FABRIC SHALL BE ATTACHED TO THE FILL FACE OF THE WING COVERING THE ENTIRE LENGTH OF THE EXPANSION JOINT.

G1 BARS IN HEADWALL ARE INCLUDED WITH BARREL REINFORCING STEEL.

PROJECT NO. R-2911C  
ROWAN COUNTY  
 STATION: 62+25.00-L1-  
 SHEET 4 OF 7



STATE OF NORTH CAROLINA  
 DEPARTMENT OF TRANSPORTATION  
 RALEIGH  
**STANDARD WING (W1)**  
 FOR  
**CONCRETE BOX CULVERT**  
 H = 6'-0" SLOPE = 2:1  
 90° SKEW  
 (LEFT EXTENSION)

ASSEMBLED BY : L.L. MURPHY	DATE : 08-04
CHECKED BY : M.G. CHEEK	DATE : 09-04
DRAWN BY : CCJ	10/99
CHECKED BY : RWW	03/00

REVISIONS						SHEET NO.
NO.	BY:	DATE:	NO.	BY:	DATE:	C-4
1			3			TOTAL SHEETS
2			4			20