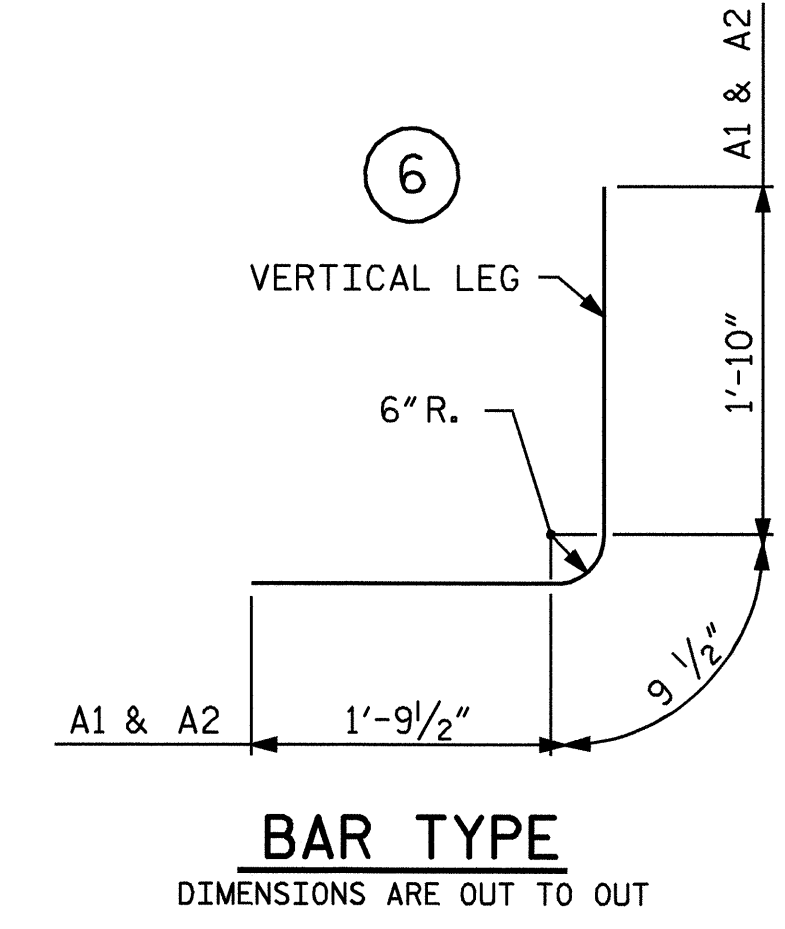
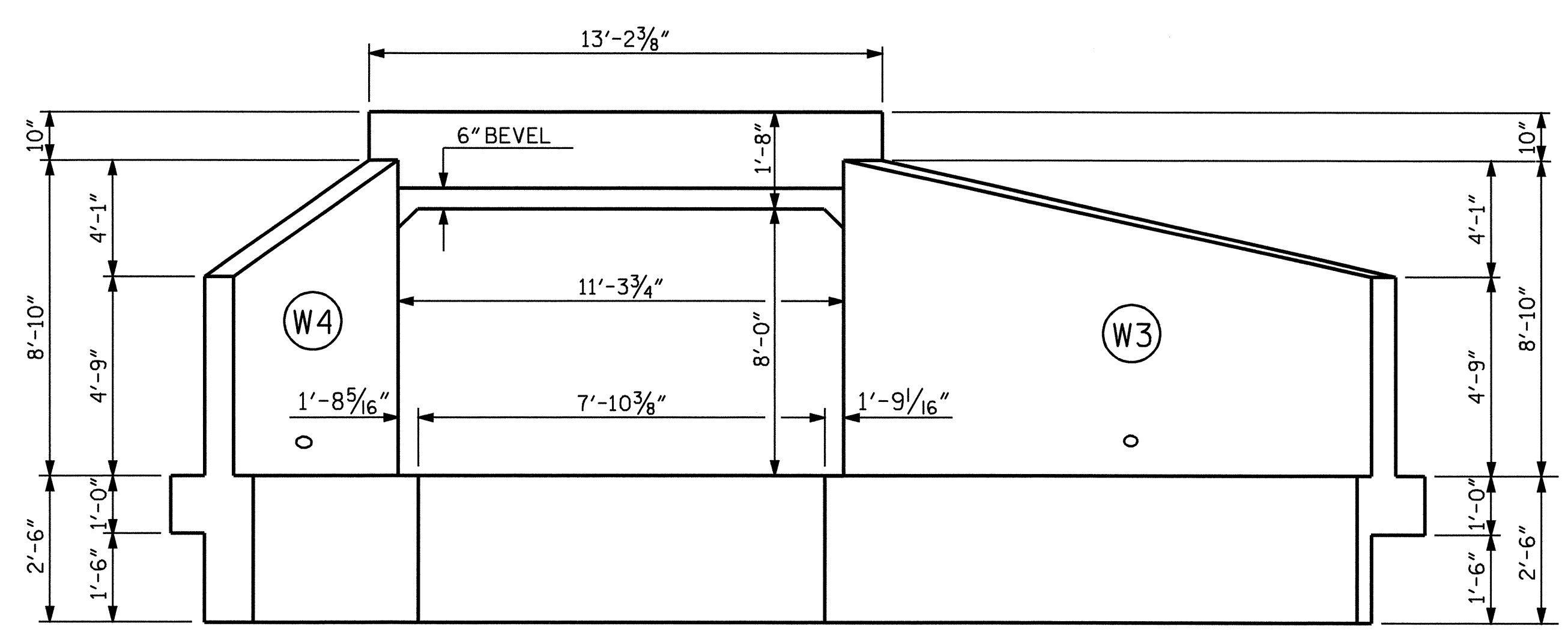


CULVERT SECTION NORMAL TO ROADWAY

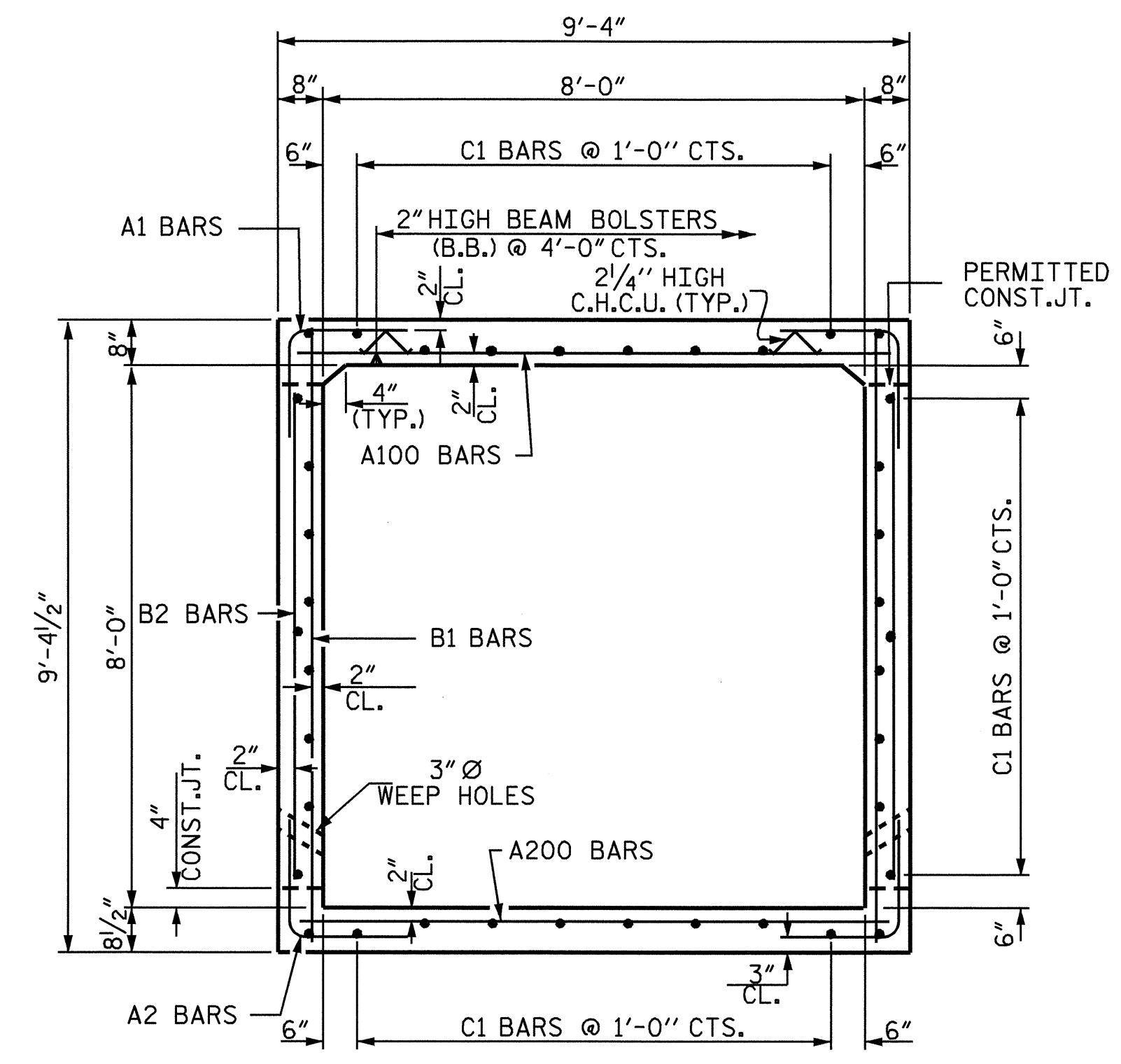


BAR TYPE
 DIMENSIONS ARE OUT TO OUT

BAR SCHEDULE					
LEFT EXTENSION					
BAR	NO.	SIZE	TYPE	LENGTH	WEIGHT
A1	42	#5	6	4'-5"	193
A2	42	#5	6	4'-5"	193
A100	7	#6	STR	8'-11"	94
A101	4	#6	STR	7'-6"	45
A102	4	#6	STR	6'-2"	37
A103	4	#6	STR	4'-10"	29
A104	4	#6	STR	3'-6"	21
A105	4	#6	STR	2'-2"	13
A200	10	#5	STR	8'-11"	93
A201	6	#5	STR	7'-6"	47
A202	6	#5	STR	6'-1"	38
A203	6	#5	STR	4'-9"	30
A204	6	#5	STR	3'-4"	21
A205	6	#5	STR	2'-0"	13
B1	42	#4	STR	8'-10"	248
B2	42	#4	STR	7'-4"	206
C1	38	#4	STR	13'-5"	341
D1	28	#6	STR	2'-6"	105
G1	2	#4	STR	12'-8"	17
S1	12	#8	STR	12'-8"	406
REINFORCING STEEL					= 2190 LBS.
SPLICE LENGTHS CHART					
BAR	SIZE	SPLICE LENGTH			
B1	#4	1'-9"			
C1	#4	1'-11"			



INLET END ELEVATION NORMAL TO SKEW



RIGHT ANGLE SECTION OF BARREL
 THERE ARE 38 "C" BARS IN SECTION OF BARREL

LEFT EXTENSION STRUCTURE QUANTITIES		
CLASS A CONCRETE		
BARREL @ 0.872 C.Y./FT.	12.2	C.Y.
WINGS, ETC.	22.3	C.Y.
TOTAL	34.5	C.Y.
REINFORCING STEEL		
BARREL	2190	LBS.
WINGS, ETC.	1378	LBS.
TOTAL	3568	LBS.
FOUNDATION CONDITIONING MATERIAL	10	TONS
CULVERT EXCAVATION		LUMP SUM

PROJECT NO. R-2911C
ROWAN COUNTY
 STATION: 152+76.60-L2-

SHEET 2 OF 7

STATE OF NORTH CAROLINA
 DEPARTMENT OF TRANSPORTATION
 RALEIGH

**SINGLE 8 FT. X 8 FT.
 CONCRETE BOX CULVERT
 (LEFT EXTENSION)**



REVISED 8-28-99 BY E.L.R. CHECKED BY G.R.P.
 REVISED 8-28-99 BY A.R.B. CHECKED BY C.R.K.
 REDRAWN 8-22-99
 REVISED 11-19-99 BY M.M. CHECKED BY R.W.W.

ASSEMBLED BY : <u>L.L. MURPHY</u>	DATE : <u>08-04</u>	SPECIAL
CHECKED BY : <u>M.G. CHEEK</u>	DATE : <u>08-04</u>	
DRAWN BY : <u>R.W. WRIGHT</u>	DATE : <u>AUG. 1989</u>	STANDARD
CHECKED BY : <u>A.R. BISSETTE</u>	DATE : <u>AUG. 1989</u>	

REVISIONS						SHEET NO.
NO.	BY:	DATE:	NO.	BY:	DATE:	C-9
1			3			TOTAL SHEETS
2			4			20

STR #2