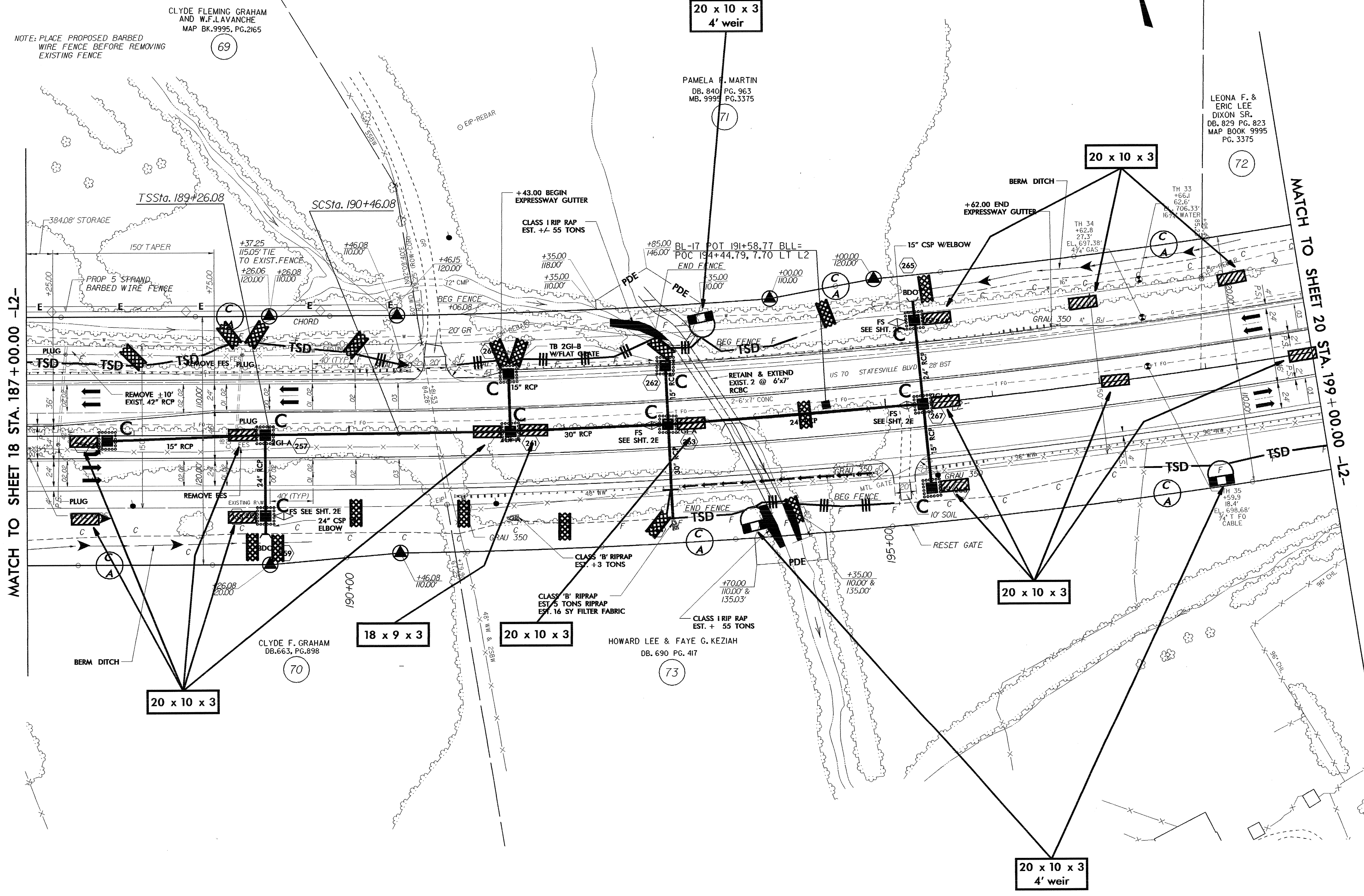
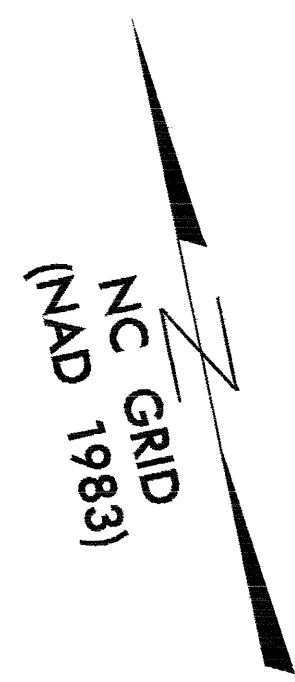


PROJECT REFERENCE NO.	SHEET NO.
R-2911C	EC-42/CONST. 19
RW SHEET NO.	
ROADWAY DESIGN ENGINEER	HYDRAULICS ENGINEER

-L2-

Pls Sta 190+06.08 $\Theta_s = 0^\circ 36' 00.0''$ $L_s = 120.00'$ $LT = 80.00'$ $ST = 40.00'$	$\Delta = 26^\circ 01' 01.2''$ (LT) $D = 1^\circ 00' 00.0''$ $L = 2601.70'$ $T = 1,323.67'$ $R = 5,729.58'$ $SE = .03$ $DS = 60$ MPH	Pls Sta 216+87.78 $\Theta_s = 0^\circ 36' 00.0''$ $L_s = 120.00'$ $LT = 80.00'$ $ST = 40.00'$
---	--	---



MATCH TO SHEET 18 STA. 187+00.00 -L2-

MATCH TO SHEET 20 STA. 199+00.00 -L2-

NOTE: PLACE PROPOSED BARBED WIRE FENCE BEFORE REMOVING EXISTING FENCE

CLYDE FLEMING GRAHAM AND W.F.LAVANCHE
MAP BK. 9995, PG. 2165

LEONA F. & ERIC LEE
DIXON SR.
DB. 829 PG. 823
MAP BOOK 9995
PG. 3375

PAMELA F. MARTIN
DB. 840 PG. 963
MB. 9995 PG. 3375

CLYDE F. GRAHAM
DB. 663, PG. 898

HOWARD LEE & FAYE G. KEZIAH
DB. 690 PG. 417

DATE: 05/15/18
DRAWN: JMS
CHECKED: JMS