

|  |           |
|--|-----------|
| PROJECT REFERENCE NO.  | SHEET NO. |
| R-3303   | UC-2      |
| DESIGNED BY: BCB   |           |
| DRAWN BY: BCB  |           |
| CHECKED BY: GYS  |           |
| APPROVED BY: GYS   |           |
| REVISED:   |           |
| NORTH CAROLINA DEPARTMENT OF TRANSPORTATION                        |           |
| DESIGN SERVICES UNIT<br>PHONE: (919)250-4128<br>FAX: (919)250-4119 |           |
| UTILITY CONSTRUCTION PLANS ONLY                                    |           |

**UTILITY CONSTRUCTION**

PROP. 38.1M OF 150MM PVC WATER PIPE, SDR 21, 1.38 MPA  
 2 - 150MM - 11 1/4" DI BEND  
 1 - 150MM GATE VALVE & VALVE BOX, 1.38 MPA  
 CONNECT PROP. WATER LINE USING NECESSARY FITTINGS

**WATER LINES OWNED BY TOWN OF ELLERBE AND RICHMOND COUNTY  
 SEWER LINES OWNED BY TOWN OF ELLERBY**

PROP. 36.8 M OF 50MM PE TUBING, SDR 9, 1.38 MPA  
 RECONNECT 1 EXISTING WATER METER  
 1 - 50MM GATE VALVE & VALVE BOX, 1.38 MPA WP  
 1 - 150MM X 50MM TAPPING SADDLE  
 CONNECT USING NECESSARY FITTINGS

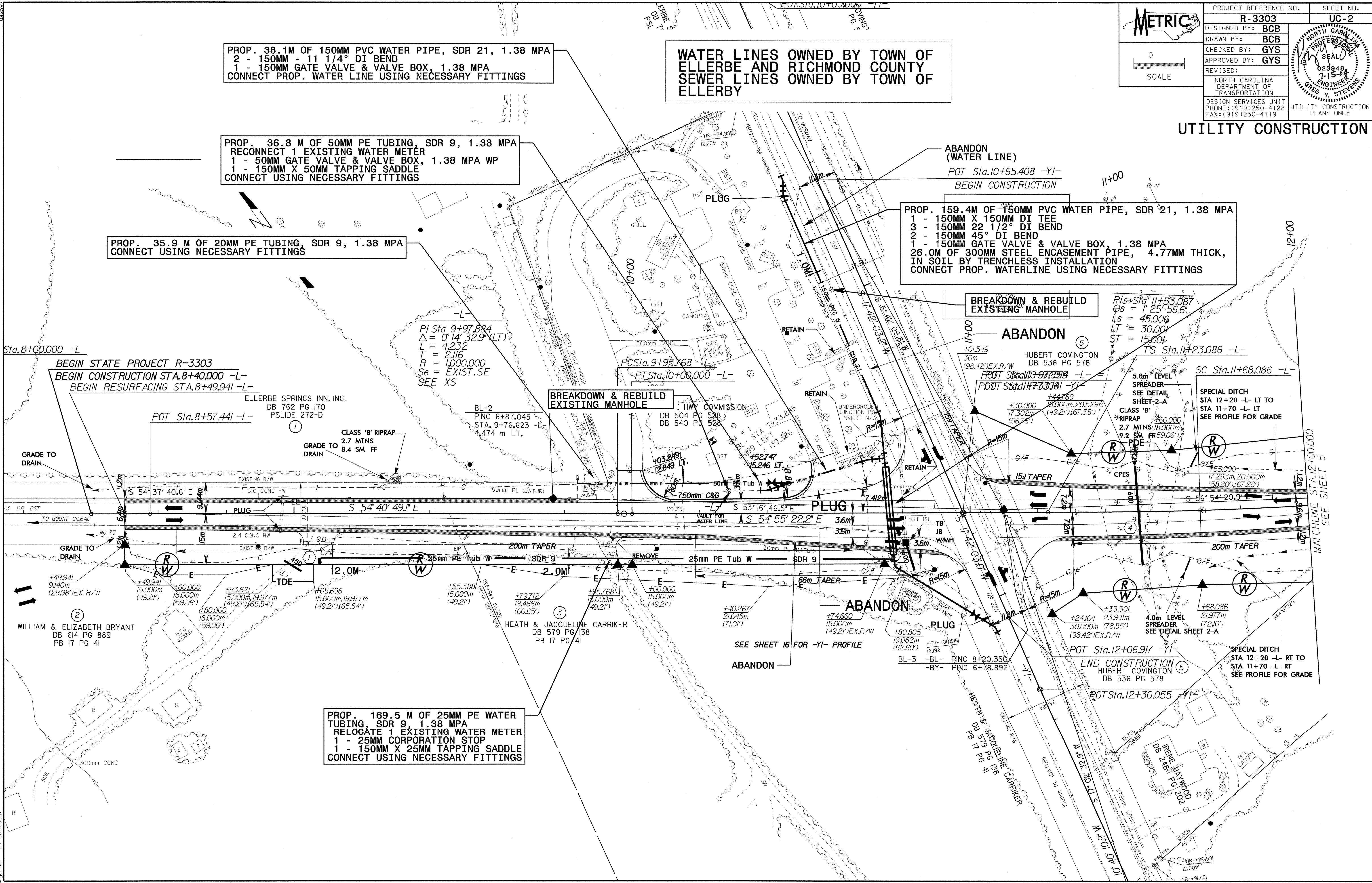
PROP. 35.9 M OF 20MM PE TUBING, SDR 9, 1.38 MPA  
 CONNECT USING NECESSARY FITTINGS

PROP. 159.4M OF 150MM PVC WATER PIPE, SDR 21, 1.38 MPA  
 1 - 150MM X 150MM DI TEE  
 3 - 150MM 22 1/2" DI BEND  
 2 - 150MM 45° DI BEND  
 1 - 150MM GATE VALVE & VALVE BOX, 1.38 MPA  
 26.0M OF 300MM STEEL ENCASEMENT PIPE, 4.77MM THICK,  
 IN SOIL BY TRENCHLESS INSTALLATION  
 CONNECT PROP. WATERLINE USING NECESSARY FITTINGS

**BREAKDOWN & REBUILD EXISTING MANHOLE**

**ABANDON**

**BREAKDOWN & REBUILD EXISTING MANHOLE**



PROP. 169.5 M OF 25MM PE WATER TUBING, SDR 9, 1.38 MPA  
 RELOCATE 1 EXISTING WATER METER  
 1 - 25MM CORPORATION STOP  
 1 - 150MM X 25MM TAPPING SADDLE  
 CONNECT USING NECESSARY FITTINGS

BEGIN STATE PROJECT R-3303  
 BEGIN CONSTRUCTION STA. 8+40.000 -L-  
 BEGIN RESURFACING STA. 8+49.941 -L-

SPECIAL DITCH  
 STA 12+20 -L- LT TO STA 11+70 -L- LT  
 SEE PROFILE FOR GRADE

SPECIAL DITCH  
 STA 12+20 -L- RT TO STA 11+70 -L- RT  
 SEE PROFILE FOR GRADE

MATCHLINE STA. 12+00.000 SEE SHEET 5

042597  
 R:\11\11-2004\4420\3303\UC-2.dwg  
 11/11/04 11:20 AM  
 3303 UC-2.dwg  
 02/05/04  
 02/05/04