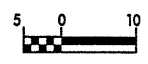
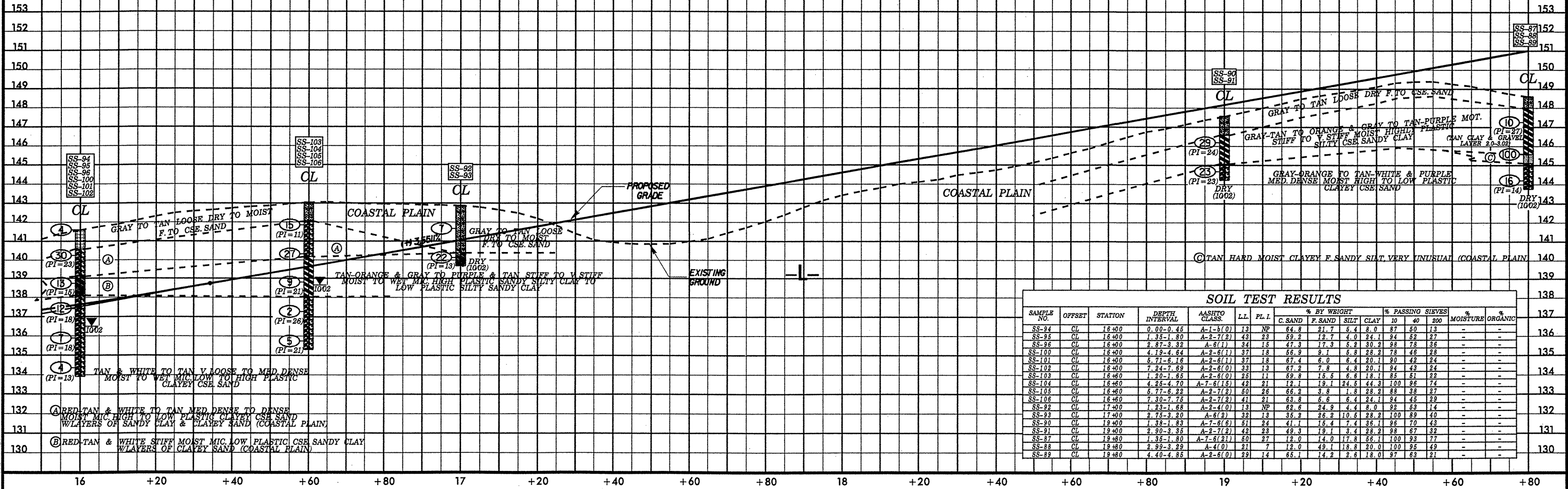
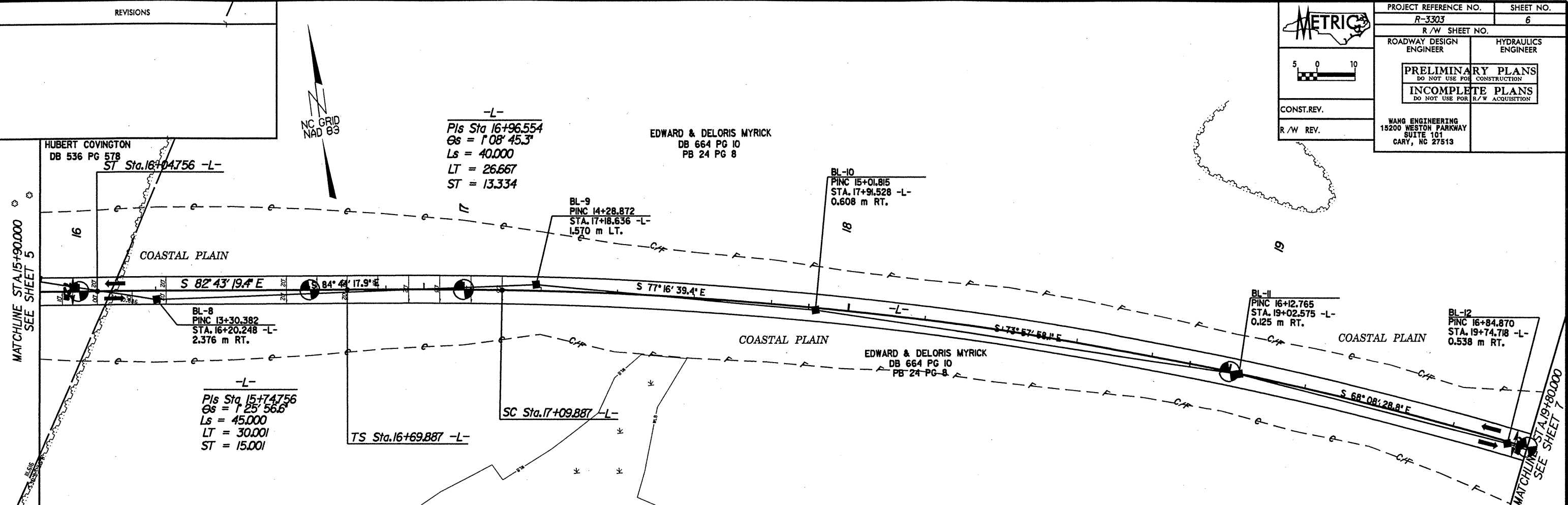




PROJECT REFERENCE NO.	R-3303	SHEET NO.	6
R/W SHEET NO.	R/W SHEET NO.		
ROADWAY DESIGN ENGINEER	HYDRAULICS ENGINEER		
<b>PRELIMINARY PLANS</b> DO NOT USE FOR CONSTRUCTION			
<b>INCOMPLETE PLANS</b> DO NOT USE FOR R/W ACQUISITION			
WANG ENGINEERING 15200 WESTON PARKWAY SUITE 101 CARY, NC 27513			



CONST. REV.  
R/W REV.



SAMPLE NO.	OFFSET	STATION	DEPTH INTERVAL	AASHTO CLASS.	LL	PL	% BY WEIGHT				% PASSING SIEVES		MOISTURE	ORGANIC
							C. SAND	F. SAND	SILT	CLAY	10	40		
SS-94	CL	16+00	0.00-0.45	A-1-b(0)	13	NP	64.8	21.7	5.4	8.0	87	50	13	-
SS-95	CL	16+00	1.35-1.80	A-2-7(2)	43	23	59.2	19.7	4.0	24.1	94	62	27	-
SS-96	CL	16+00	2.87-3.32	A-6(1)	34	15	47.3	17.3	5.2	30.2	98	78	36	-
SS-100	CL	16+00	4.19-4.64	A-2-6(1)	37	18	56.9	9.1	6.8	28.2	78	46	28	-
SS-101	CL	16+00	5.71-6.16	A-2-6(1)	37	18	67.4	6.0	6.4	20.1	90	42	24	-
SS-102	CL	16+00	7.24-7.69	A-2-6(0)	33	13	67.2	7.8	4.8	20.1	94	43	24	-
SS-103	CL	16+60	1.20-1.65	A-2-6(0)	26	11	89.8	15.6	6.6	18.1	85	57	22	-
SS-104	CL	16+60	4.26-4.70	A-7-6(15)	42	21	12.1	13.1	24.6	44.3	100	96	74	-
SS-105	CL	16+60	5.77-6.22	A-2-7(2)	60	28	66.2	3.8	1.6	28.2	88	39	27	-
SS-106	CL	16+60	7.30-7.75	A-2-7(2)	41	21	63.8	6.6	6.4	24.1	94	46	29	-
SS-92	CL	17+00	1.23-1.68	A-2-4(0)	13	NP	62.6	24.9	4.4	8.0	92	63	14	-
SS-93	CL	17+00	2.75-3.20	A-6(2)	32	13	35.2	26.2	10.6	28.2	100	89	40	-
SS-90	CL	19+00	1.38-1.83	A-7-6(6)	51	24	41.1	15.4	7.4	35.1	96	70	43	-
SS-91	CL	19+00	2.90-3.35	A-2-7(2)	42	23	49.3	19.1	3.4	28.2	98	67	32	-
SS-87	CL	19+60	1.36-1.80	A-7-6(21)	60	27	12.0	14.0	17.8	66.1	100	93	77	-
SS-88	CL	19+60	2.99-3.29	A-4(0)	21	7	12.0	49.1	18.8	20.0	100	95	49	-
SS-89	CL	19+60	4.40-4.85	A-2-6(0)	29	14	65.1	14.2	2.6	18.0	97	63	21	-