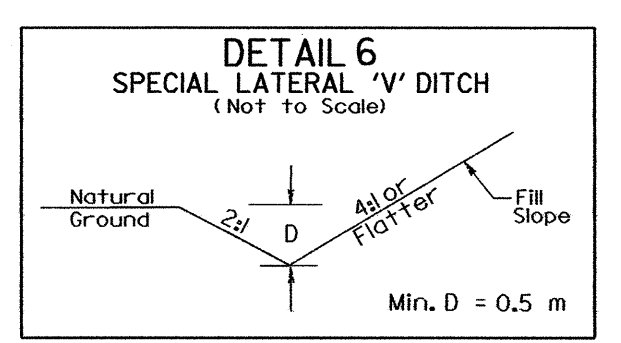
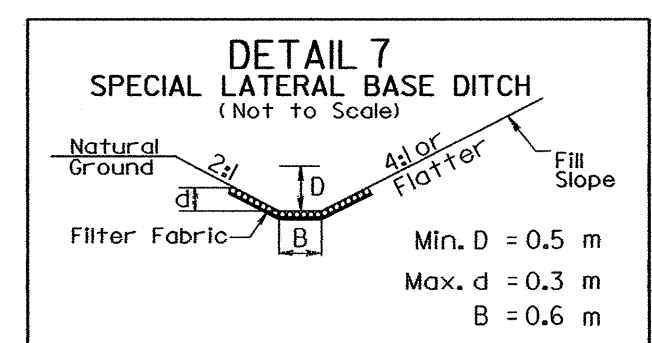


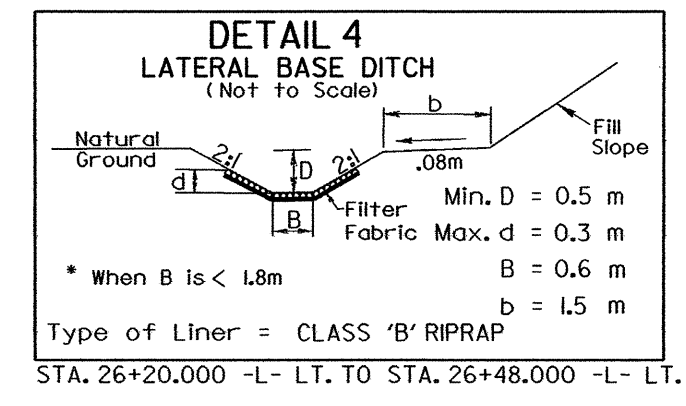
PROJECT REFERENCE NO.	SHEET NO.
R-3303	EC-19/CPNST.8
R/W SHEET NO.	
ROADWAY DESIGN ENGINEER	HYDRAULICS ENGINEER
CONST. REV.	
R/W REV.	



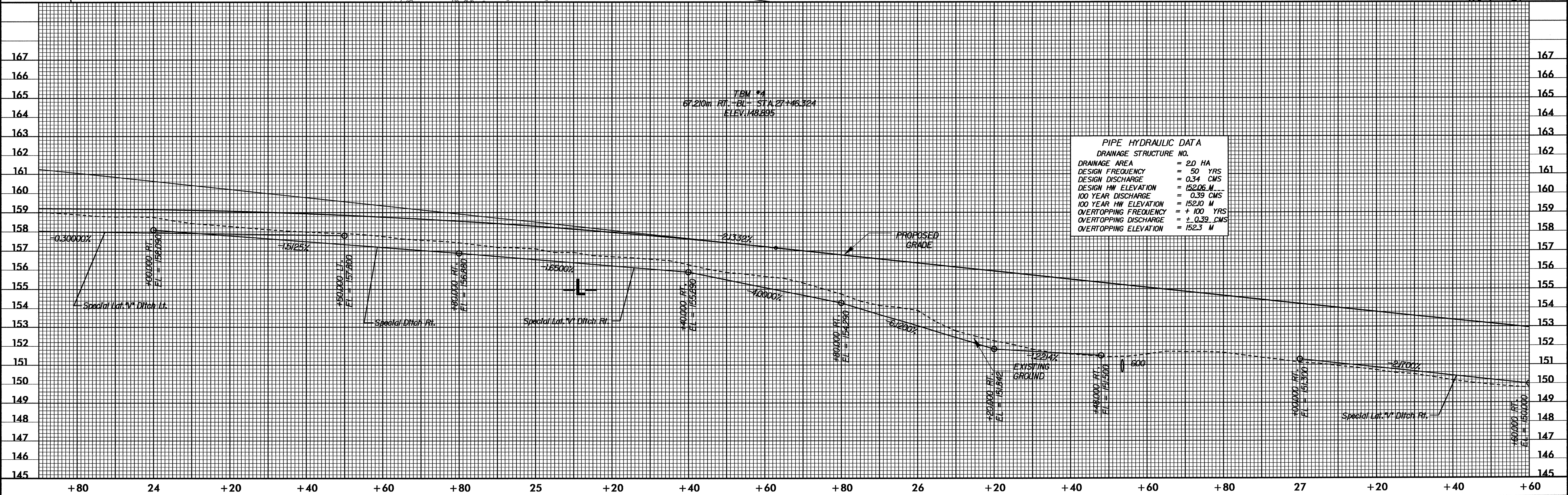
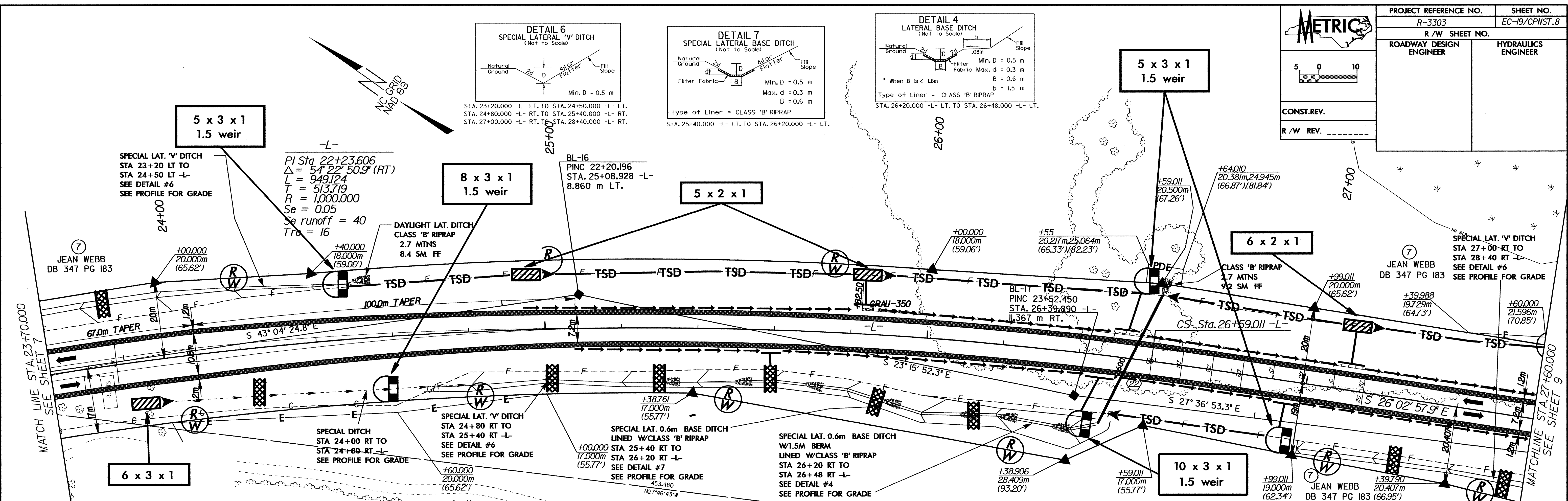
STA. 23+20.000 -L- LT. TO STA. 24+50.000 -L- LT.
 STA. 24+80.000 -L- RT. TO STA. 25+40.000 -L- RT.
 STA. 27+00.000 -L- RT. TO STA. 28+40.000 -L- RT.



STA. 25+40.000 -L- LT. TO STA. 26+20.000 -L- LT.



STA. 26+20.000 -L- LT. TO STA. 26+48.000 -L- LT.



PIPE HYDRAULIC DATA	
DRAINAGE STRUCTURE NO.	
DRAINAGE AREA	= 2.0 HA
DESIGN FREQUENCY	= 50 YRS
DESIGN DISCHARGE	= 0.34 CMS
DESIGN HW ELEVATION	= 152.06 M
100 YEAR DISCHARGE	= 0.39 CMS
100 YEAR HW ELEVATION	= 152.10 M
OVERTOPPING FREQUENCY	= + 100 YRS
OVERTOPPING DISCHARGE	= ± 0.39 CMS
OVERTOPPING ELEVATION	= 152.3 M

I:\Users\jv\OneDrive\Documents\Projects\3303\Roadway\Drawings\Roadway\3303_rdw\psn_08.dgn
 2004/06/27
 11:38:33 AM
 jv