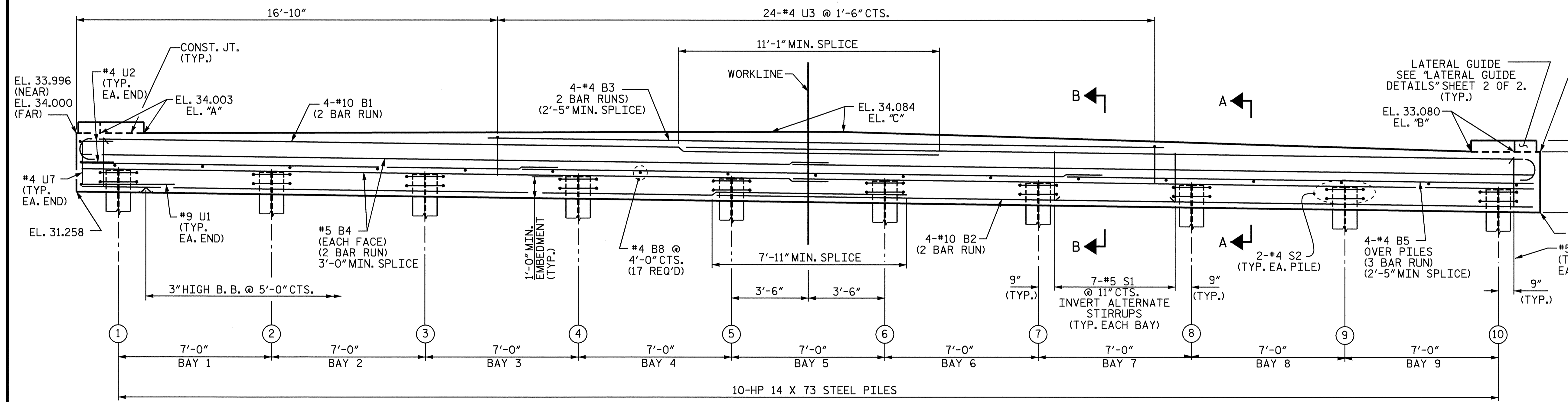


NOTES

STIRRUPS IN CAP MAY BE SHIFTED AS NECESSARY TO CLEAR DOWELS.

THE LATERAL GUIDE AT EACH END OF THE CAP IS NOT TO BE POURED UNTIL AFTER CORED SLAB UNITS ARE IN PLACE.

THE STEEL PILES SHALL BE GALVANIZED IN ACCORDANCE WITH SECTION 1076 OF THE STANDARD SPECIFICATIONS. FOR GALVANIZING STEEL PILES, SEE SPECIAL PROVISIONS.



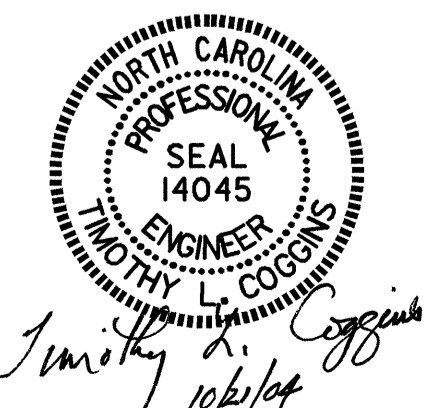
PROJECT NO. B3685

PITT COUNTY

STATION: 17+47.50 -L-

SHEET 1 OF 2

TOP OF PILE ELEVATIONS	
1	32.236
2	32.134
3	32.032
4	31.930
5	31.828
6	31.726
7	31.624
8	31.522
9	31.420
10	31.314



STATE OF NORTH CAROLINA
DEPARTMENT OF TRANSPORTATION
RALEIGH

SUBSTRUCTURE
BENT #2

REVISIONS						SHEET NO.
NO.	BY:	DATE:	NO.	BY:	DATE:	S-18
1			3			TOTAL SHEETS 27
2			4			

DRAWN BY: PEGGY ADKINS DATE: 7/04

CHECKED BY: J. L. AVERETTE DATE: 8-04