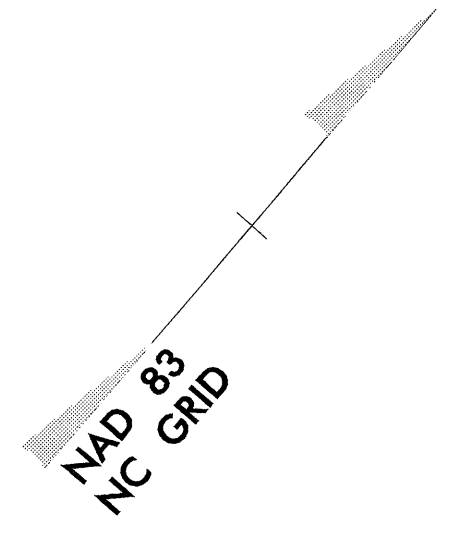


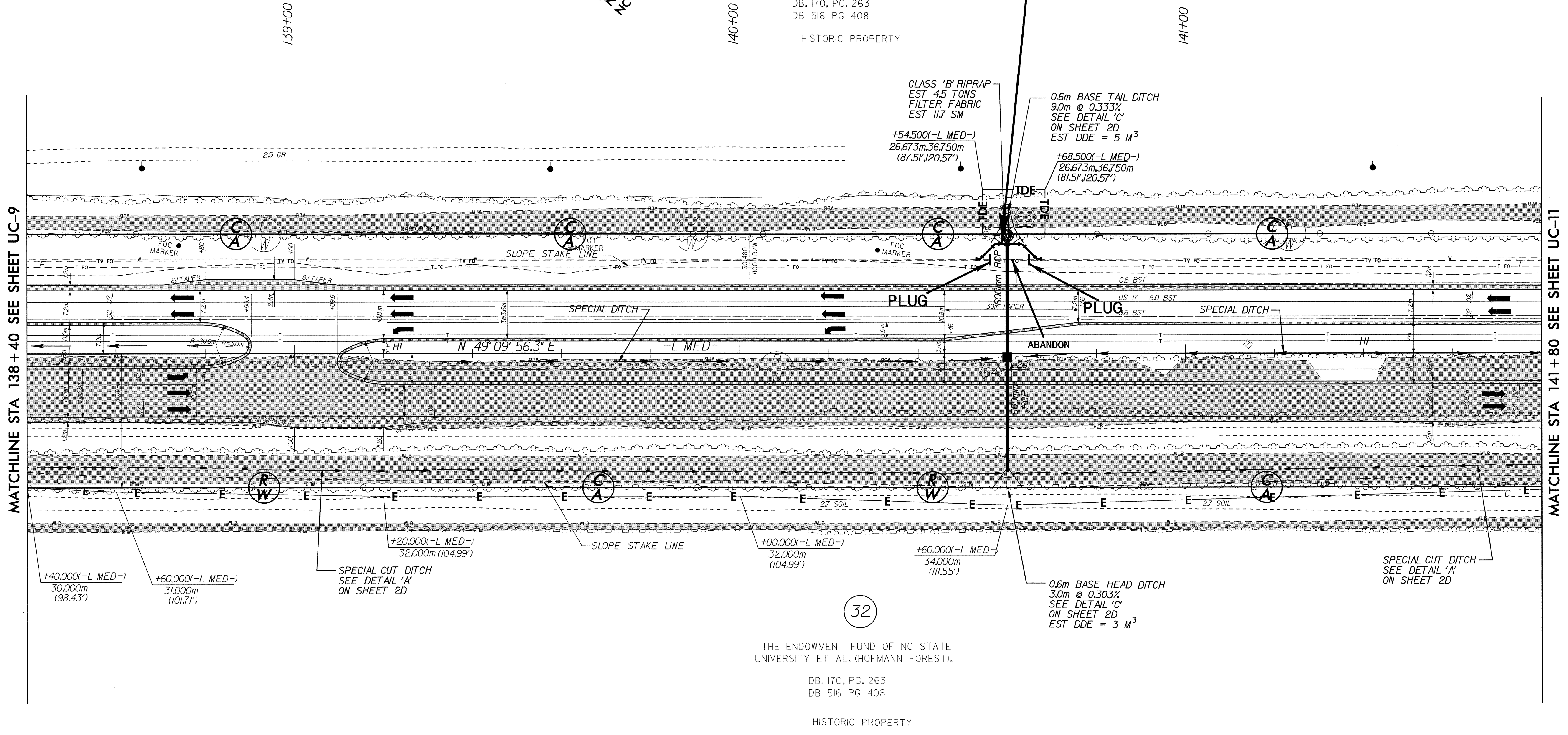
PROJECT REFERENCE NO.	R-2514A	SHEET NO.	UC-10
DESIGNED BY:	ARK		
DRAWN BY:	ARK		
CHECKED BY:	GYS		
APPROVED BY:	GYS		
REVISED:			
NORTH CAROLINA DEPARTMENT OF TRANSPORTATION			
DESIGN SERVICES UNIT PHONE: (919)250-4128 FAX: (919)250-4119			
UTILITY CONSTRUCTION PLANS ONLY			

UTILITY CONSTRUCTION

PROP. 15.8 M OF 200MM DI WATER PIPE,
PC 2.41 MPA WP
4-200MM 45° DI BEND
MAKE CONNECTION USING THE NECESSARY FITTINGS



THE ENDOWMENT FUND OF NC STATE UNIVERSITY ET AL. (HOFMANN FOREST).
DB. 170, PG. 263
DB 516 PG 408
HISTORIC PROPERTY



THE ENDOWMENT FUND OF NC STATE UNIVERSITY ET AL. (HOFMANN FOREST).
DB. 170, PG. 263
DB 516 PG 408
HISTORIC PROPERTY

SEE SHEET NO. 2D FOR ALL DRIVEWAY DETAILS.

SEE SHEET NO. 2D FOR ALL DITCH DETAILS.

SEE SHEET NO. 46 FOR NBL & SBL GRADES AND PROFILES AND ALL DITCH GRADES AND PROFILES.