

NOTE:
 ALL PROPOSED UTILITY WORK
 SHOWN ON THIS SHEET WILL
 BE DONE BY OTHERS

| REVISIONS |
|--|
| *Date: 9/13/02 - Parcel 9; Revised Property Lines* |
| *Date: 1/06/03 - Revised Datum Description* |
| *Date: 1/09/03 - Parcel 2; Revised Property Lines, Revised Areas* |
| *Date: 3/21/03 - Revisions per Right of Way Division Letter Dated 1/31/03* |

DATUM DESCRIPTION
 THE LOCALIZED COORDINATE SYSTEM DEVELOPED FOR THIS PROJECT IS BASED ON THE STATE PLANE COORDINATES ESTABLISHED BY NGOS FOR MONUMENT CIRCLE WITH NAD 83 STATE PLANE GRID COORDINATES OF NORTHING: 118406.819 (m) EASTING: 780151.756 (m) THE AVERAGE COMBINED GRID FACTOR USED ON THIS PROJECT (GROUND TO GRID) IS: 0.999999992 THE N.C. LAMBERT GRID BEARING AND LOCALIZED HORIZONTAL GROUND DISTANCE FROM CIRCLE TO -L MED- POT STATION 98+95.276 IS N63°34'12"E 918.532(m) ALL LINEAR DIMENSIONS ARE LOCALIZED HORIZONTAL DISTANCES VERTICAL DATUM USED IS NGVD - 29

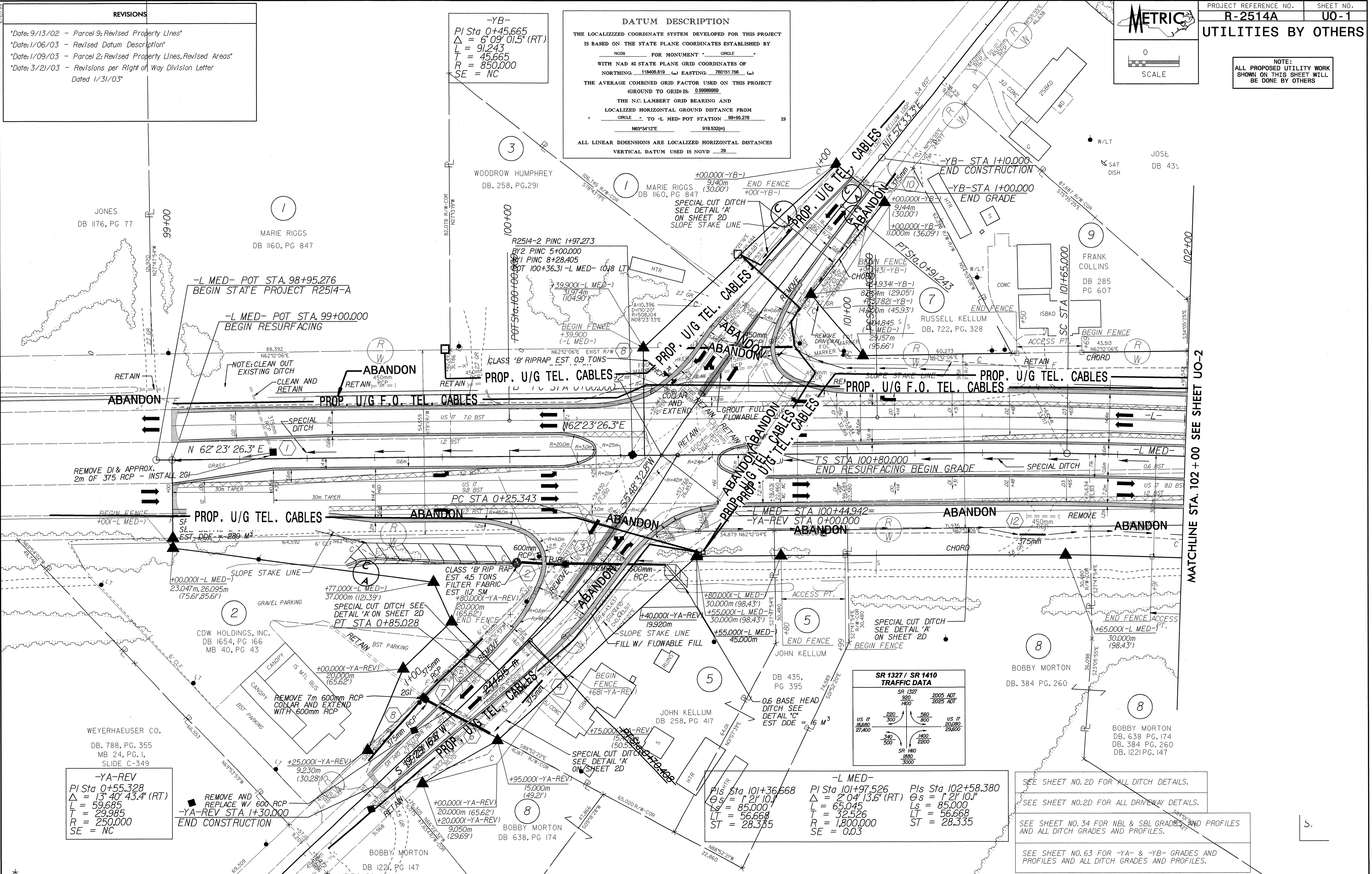
-YB-
 PI Sta 0+45.665
 $\Delta = 6'09''01.5''$ (RT)
 L = 91.243
 T = 45.665
 R = 850.000
 SE = NC

-YA-REV
 PI Sta 0+55.328
 $\Delta = 13'40''43.4''$ (RT)
 L = 59.685
 T = 29.985
 R = 250.000
 SE = NC

-L MED-
 PI Sta 101+97.526
 $\Delta = 2'04''13.6''$ (RT)
 L = 65.045
 T = 32.526
 R = 1,800.000
 SE = 0.03

SR 1327 / SR 1410 TRAFFIC DATA

| | |
|---------------------------|----------------------|
| SR 1327 920 1400 | 2005 ADT 2025 ADT |
| US 17 18,680 27,400 | 560 800 |
| SR 140 1,880 3,000 | 60 2200 |



MATCHLINE STA. 102+00 SEE SHEET UO-2

SEE SHEET NO. 2D FOR ALL DITCH DETAILS.
 SEE SHEET NO. 2D FOR ALL DRIVEWAY DETAILS.
 SEE SHEET NO. 34 FOR NBL & SBL GRADES AND PROFILES AND ALL DITCH GRADES AND PROFILES.
 SEE SHEET NO. 63 FOR -YA- & -YB- GRADES AND PROFILES AND ALL DITCH GRADES AND PROFILES.

04-NOV-2003 10:23 R:\Utilities\Revised\UO-1\UO-1.dwg