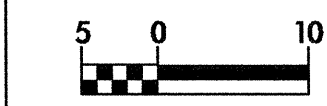


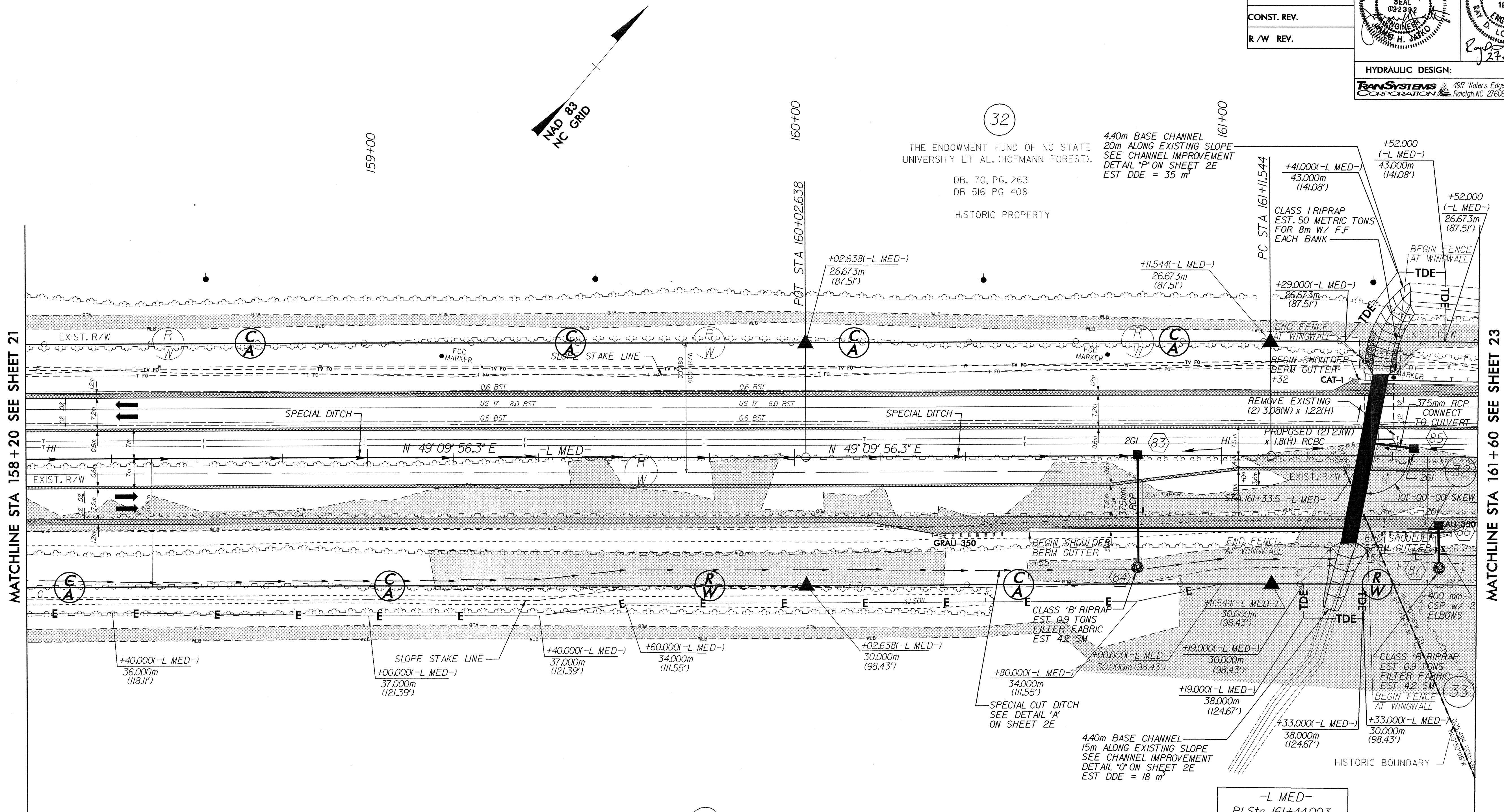
ROADWAY DESIGN BY:
TAYLOR • WISEMAN & TAYLOR
 ENGINEERS • SURVEYORS • PLANNERS
 G.P.S. • SUBSURFACE UTILITY ENGINEERING
 3500 REGENCY PARKWAY, SUITE H, CARY, N.C. 27511
 TELEPHONE NO. (919)297-0085 FAX NO. (919)297-0090



CONST. REV.
 R/W REV.

PROJECT REFERENCE NO. R-2514A	SHEET NO. 22
R/W SHEET NO.	
ROADWAY DESIGN ENGINEER <i>[Signature]</i>	HYDRAULICS ENGINEER <i>[Signature]</i>

HYDRAULIC DESIGN:
TRANSYSTEMS CORPORATION
 4917 Waters Edge Drive, Suite 235
 Raleigh, NC 27606 (919) 233-8125



MATCHLINE STA 158+20 SEE SHEET 21

MATCHLINE STA 161+60 SEE SHEET 23

32

THE ENDOWMENT FUND OF NC STATE
 UNIVERSITY ET AL. (HOFMANN FOREST).
 DB. 170, PG. 263
 DB 516 PG 408
 HISTORIC PROPERTY

-L MED-
 PI Sta 161+44.003
 $\Delta = 1' 03" 51" (RT)$
 L = 64.915
 T = 32.459
 R = 3,495.000
 SE = NC

SEE SHEET C-5 THROUGH SHEET C-9 FOR
 CULVERT DETAILS

SEE SHEET NO.2E FOR ALL DRIVEWAY DETAILS.

SEE SHEET NO.2E FOR ALL DITCH DETAILS.

SEE SHEET NO.52 FOR NBL & SBL GRADES AND PROFILES
 AND ALL DITCH GRADES AND PROFILES.

C:\AD\701525\36-1481-2004\0002\Roadway\1R-2514A_RDY_PSH.dgn