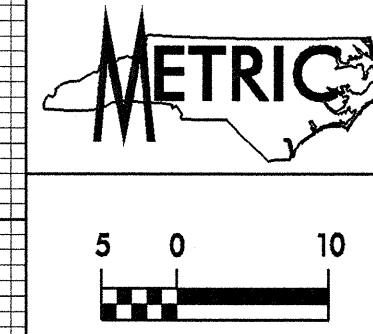


ROADWAY DESIGN BY:
TAYLOR • WISEMAN & TAYLOR
 ENGINEERS • SURVEYORS • PLANNERS
 G. P. S. • SUBSURFACE UTILITY ENGINEERING
 3500 REGENCY PARKWAY, SUITE H, CARY, N.C. 27511
 TELEPHONE NO. (919)297-0085 FAX NO. (919)297-0090

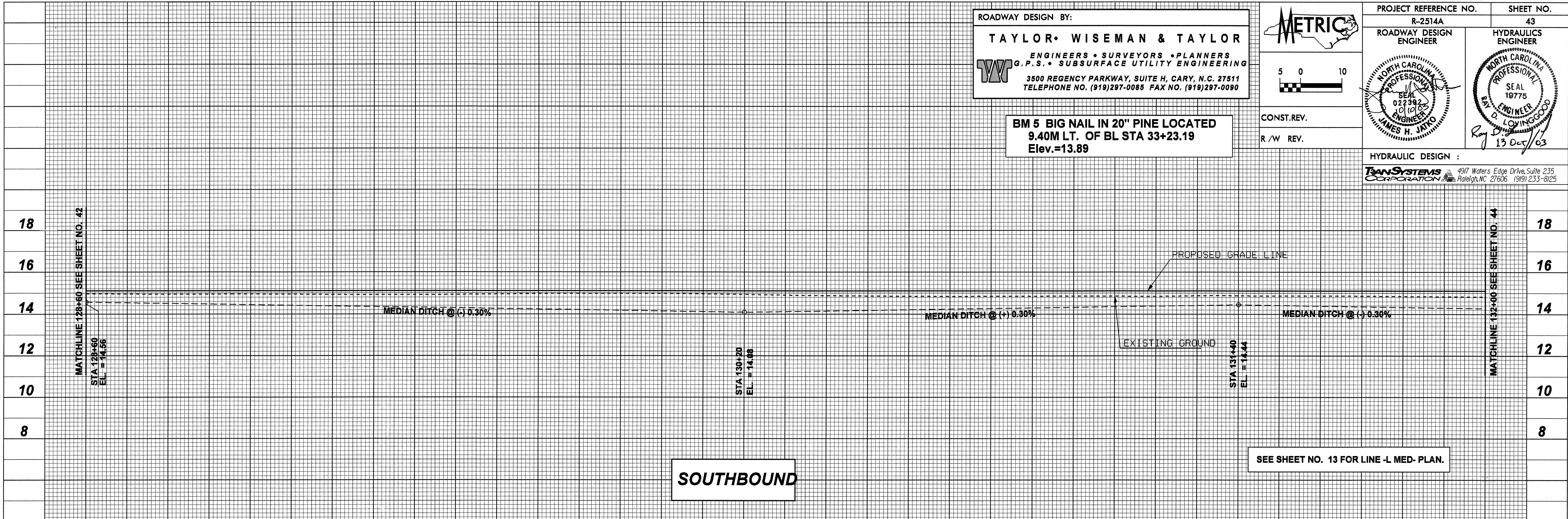


PROJECT REFERENCE NO. R-2514A	SHEET NO. 43
ROADWAY DESIGN ENGINEER	HYDRAULICS ENGINEER
<i>(Signature)</i> JAMES H. JAYO	<i>(Signature)</i> RAY D. LOVINGGOOD

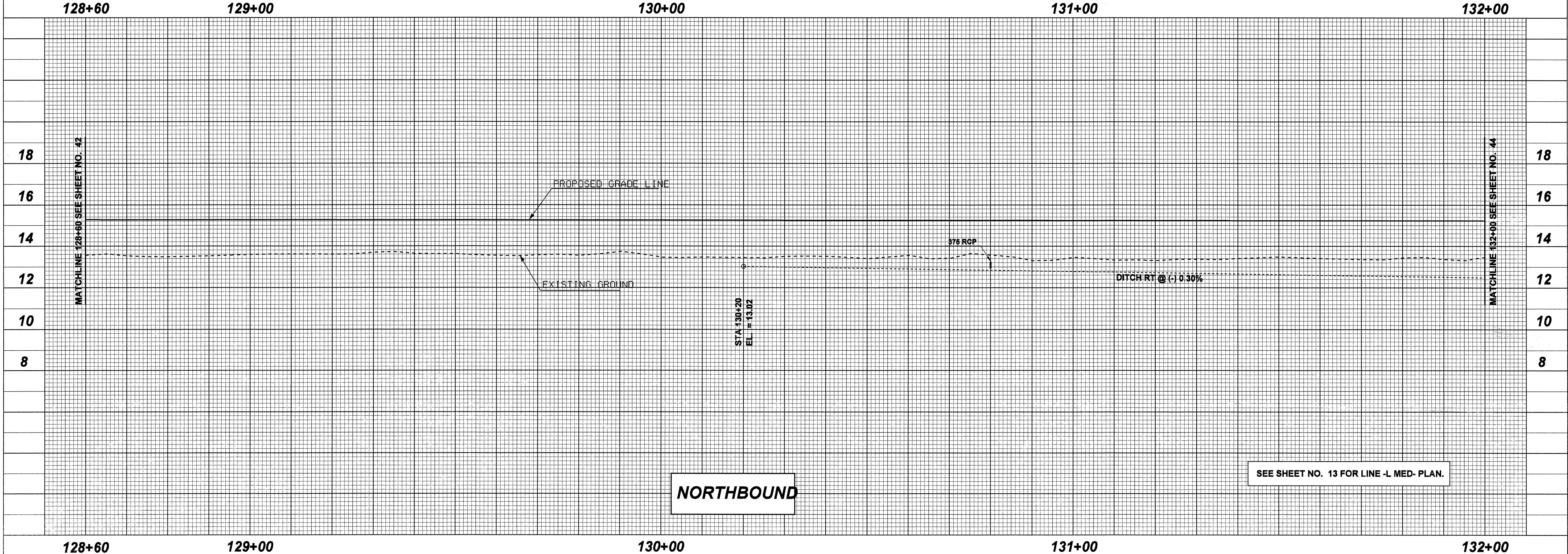
BM 5 BIG NAIL IN 20" PINE LOCATED
 9.40M LT. OF BL STA 33+23.19
 Elev.=13.89

CONST.REV.
 R / W REV.

HYDRAULIC DESIGN :
TRANSYSTEMS CORPORATION
 4917 Waters Edge Drive, Suite 235
 Raleigh, NC 27606 (919) 233-8125



SOUTHBOUND



NORTHBOUND