

BM 7 BIG NAIL IN 15" PINE LOCATED
8.23M LT. OF BL STA 47+61.78
Elev.=13.59

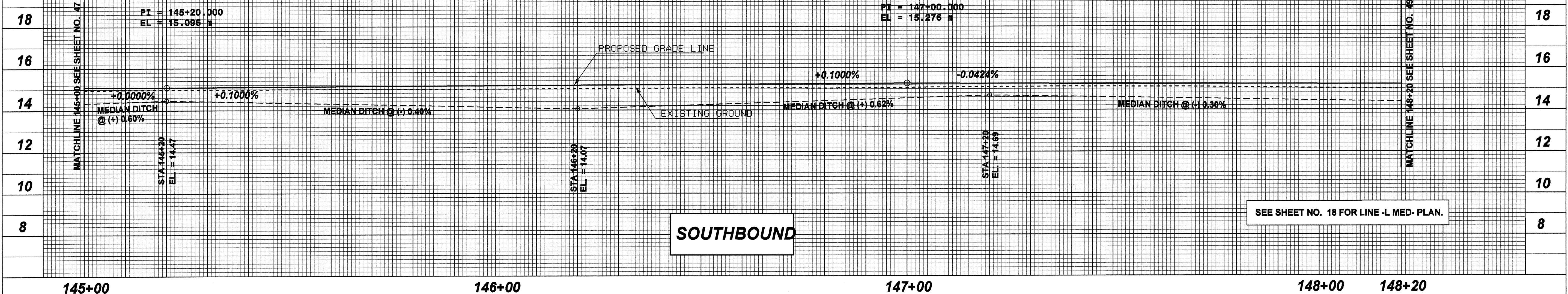
ROADWAY DESIGN BY:
TAYLOR • WISEMAN & TAYLOR
ENGINEERS • SURVEYORS • PLANNERS
G. P. S. • SUBSURFACE UTILITY ENGINEERING
3500 REGENCY PARKWAY, SUITE H, CARY, N.C. 27511
TELEPHONE NO. (919)297-0085 FAX NO. (919)297-0090

METRIC

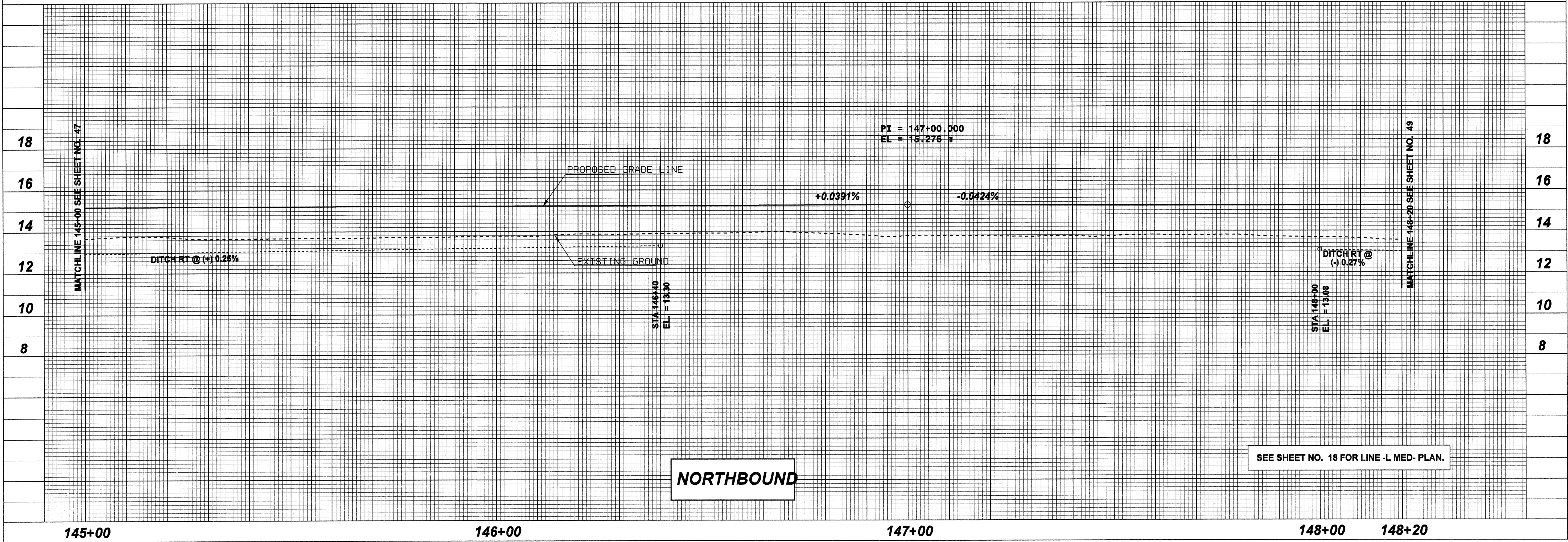
CONST. REV.
R /W REV.

PROJECT REFERENCE NO. R-2514A	SHEET NO. 48
ROADWAY DESIGN ENGINEER	HYDRAULICS ENGINEER

HYDRAULIC DESIGN :
TRANSYSTEMS CORPORATION 4917 Waters Edge Drive, Suite 235
Raleigh, NC 27606 (919) 233-8125



SOUTHBOUND



NORTHBOUND