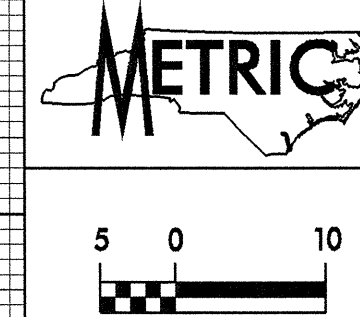


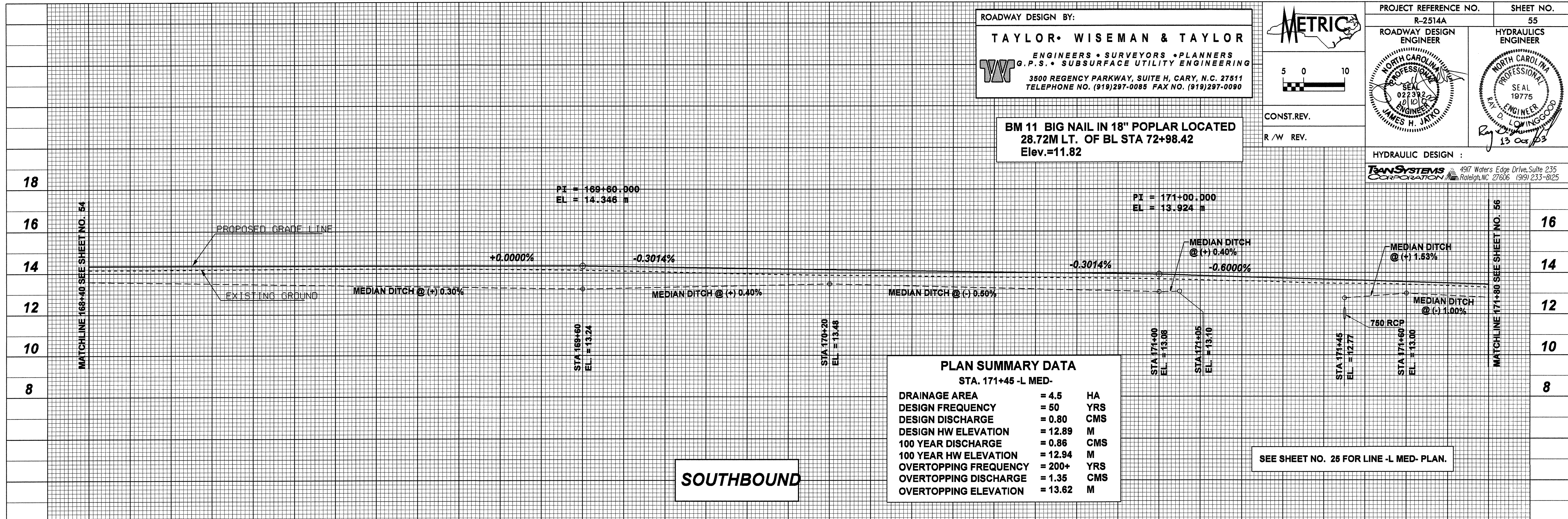
ROADWAY DESIGN BY:
TAYLOR • WISEMAN & TAYLOR
 ENGINEERS • SURVEYORS • PLANNERS
 G.P.S. • SUBSURFACE UTILITY ENGINEERING
 3800 REGENCY PARKWAY, SUITE H, CARY, N.C. 27511
 TELEPHONE NO. (919)297-0085 FAX NO. (919)297-0090



PROJECT REFERENCE NO. R-2514A	SHEET NO. 55
ROADWAY DESIGN ENGINEER	HYDRAULICS ENGINEER

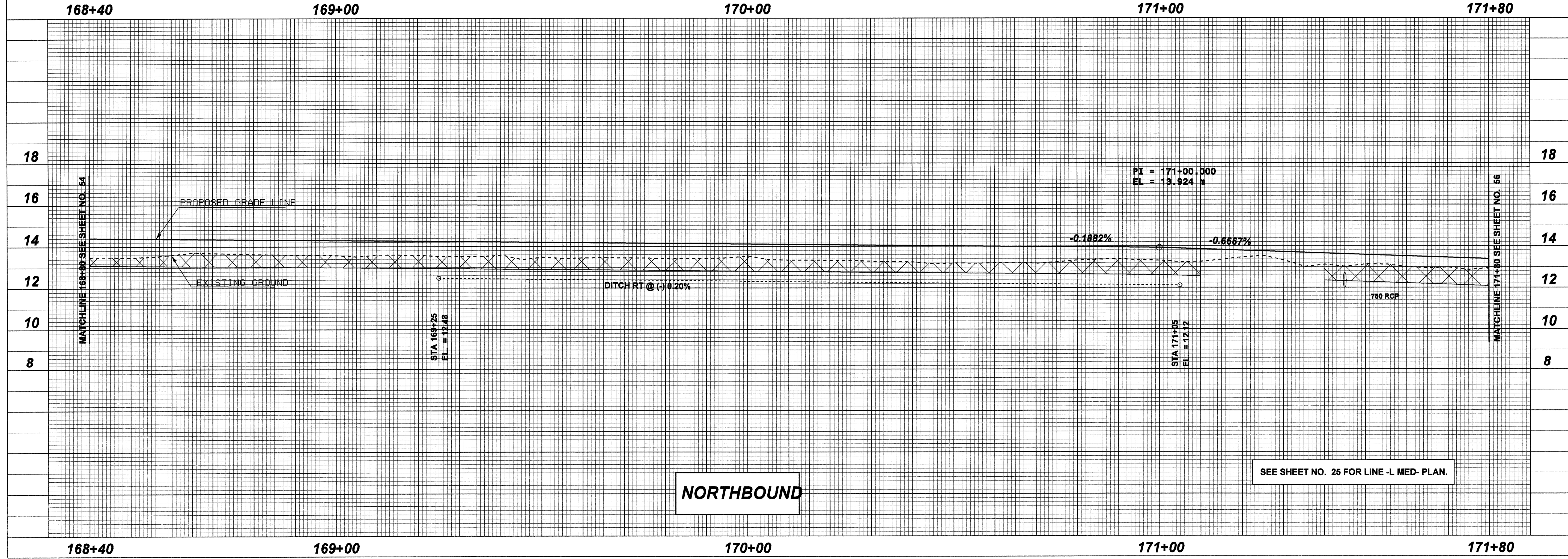
**BM 11 BIG NAIL IN 18" POPLAR LOCATED
 28.72M LT. OF BL STA 72+98.42
 Elev.=11.82**

HYDRAULIC DESIGN :
TRANSYSTEMS CORPORATION
 4917 Waters Edge Drive, Suite 235
 Raleigh, NC 27606 (919) 233-8125



SOUTHBOUND

SEE SHEET NO. 25 FOR LINE -L MED- PLAN.



NORTHBOUND

SEE SHEET NO. 25 FOR LINE -L MED- PLAN.