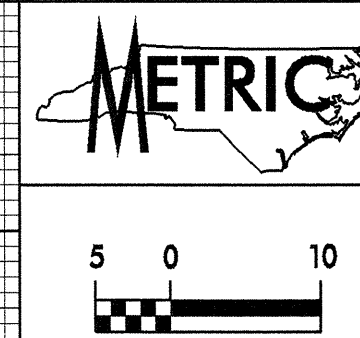


ROADWAY DESIGN BY:  
**TAYLOR WISEMAN & TAYLOR**  
 ENGINEERS • SURVEYORS • PLANNERS  
 G.P.S. • SUBSURFACE UTILITY ENGINEERING  
 3500 REGENCY PARKWAY, SUITE H, CARY, N.C. 27511  
 TELEPHONE NO. (919)297-0085 FAX NO. (919)297-0090



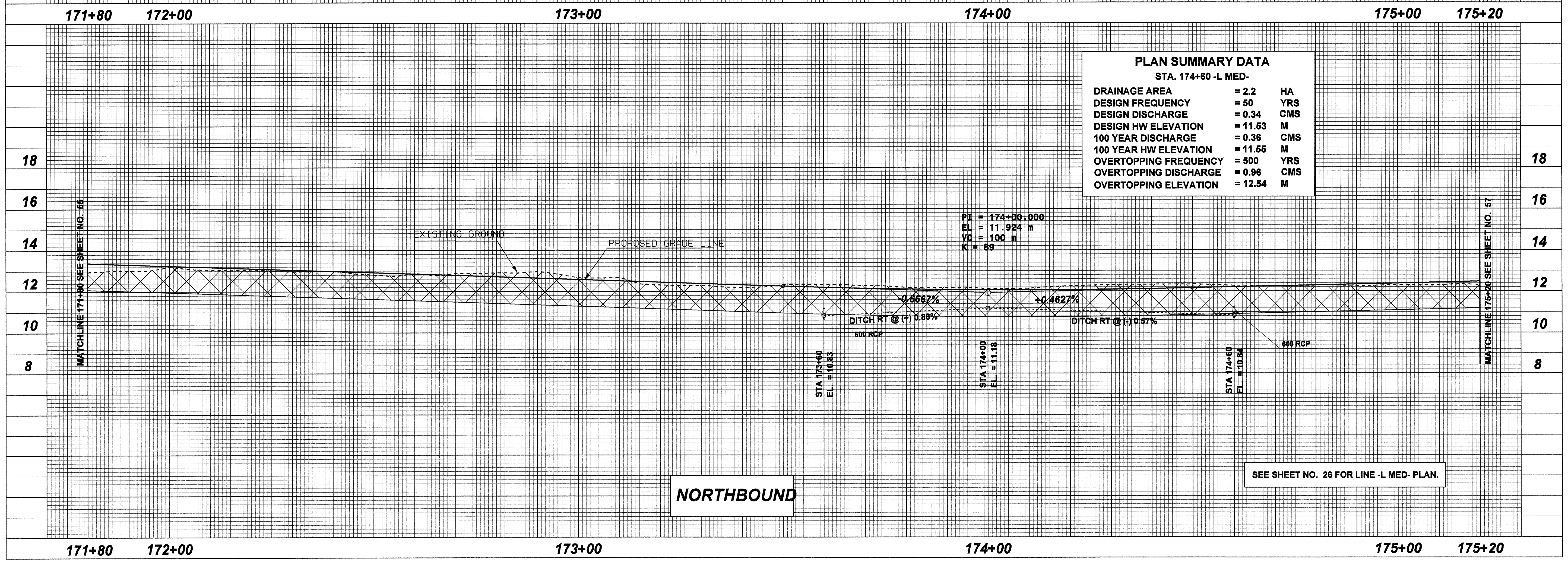
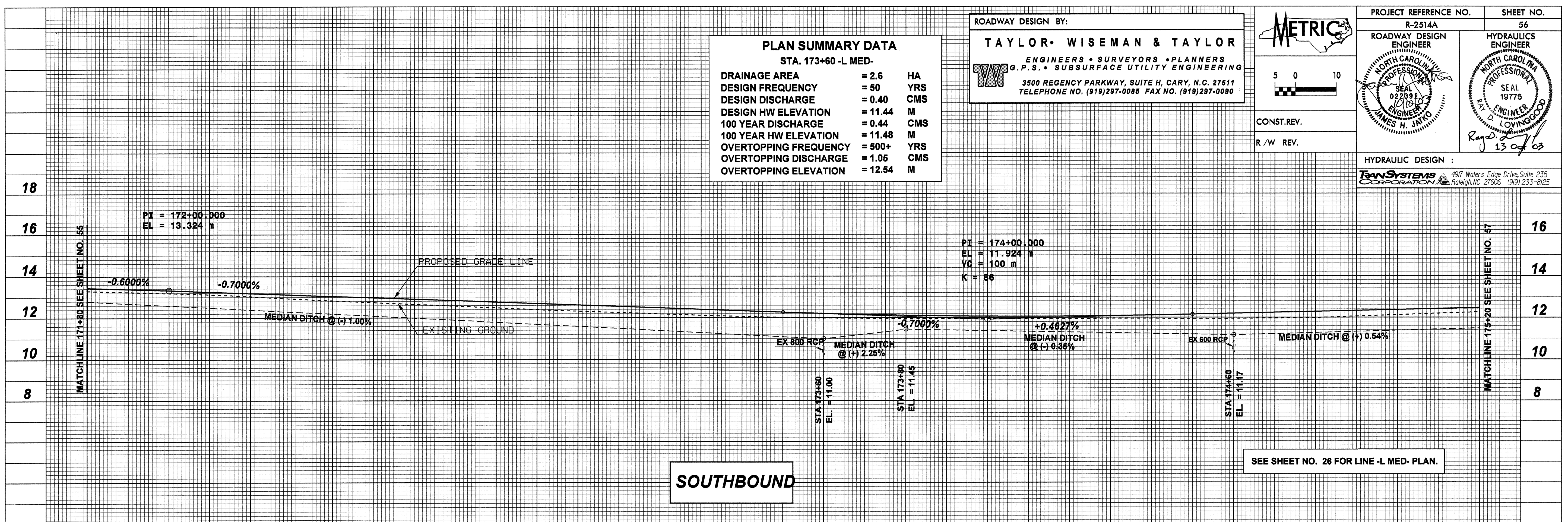
PROJECT REFERENCE NO. R-2514A	SHEET NO. 56
ROADWAY DESIGN ENGINEER JAMES H. JAYKO	HYDRAULICS ENGINEER R. D. LOVINGGOOD

**PLAN SUMMARY DATA**  
 STA. 173+60 -L MED-

DRAINAGE AREA	= 2.6	HA
DESIGN FREQUENCY	= 50	YRS
DESIGN DISCHARGE	= 0.40	CMS
DESIGN HW ELEVATION	= 11.44	M
100 YEAR DISCHARGE	= 0.44	CMS
100 YEAR HW ELEVATION	= 11.48	M
OVERTOPPING FREQUENCY	= 500+	YRS
OVERTOPPING DISCHARGE	= 1.05	CMS
OVERTOPPING ELEVATION	= 12.54	M

CONST. REV.  
 R / W REV.

HYDRAULIC DESIGN :  
**TRANSYSTEMS CORPORATION**  
 4917 Waters Edge Drive, Suite 235  
 Raleigh, NC 27606 (919) 233-8125



**PLAN SUMMARY DATA**  
 STA. 174+60 -L MED-

DRAINAGE AREA	= 2.2	HA
DESIGN FREQUENCY	= 50	YRS
DESIGN DISCHARGE	= 0.34	CMS
DESIGN HW ELEVATION	= 11.53	M
100 YEAR DISCHARGE	= 0.36	CMS
100 YEAR HW ELEVATION	= 11.55	M
OVERTOPPING FREQUENCY	= 500	YRS
OVERTOPPING DISCHARGE	= 0.96	CMS
OVERTOPPING ELEVATION	= 12.54	M