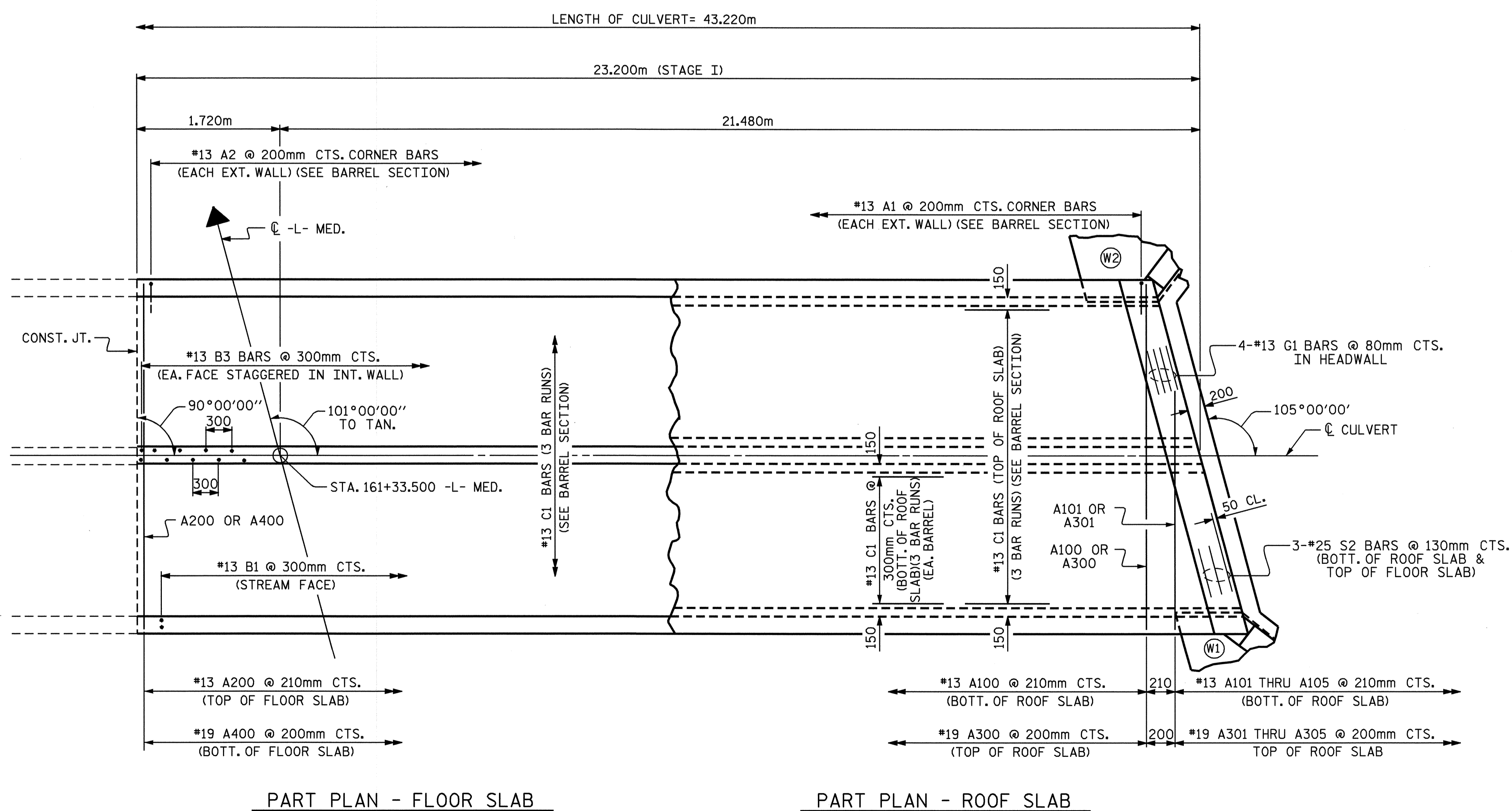
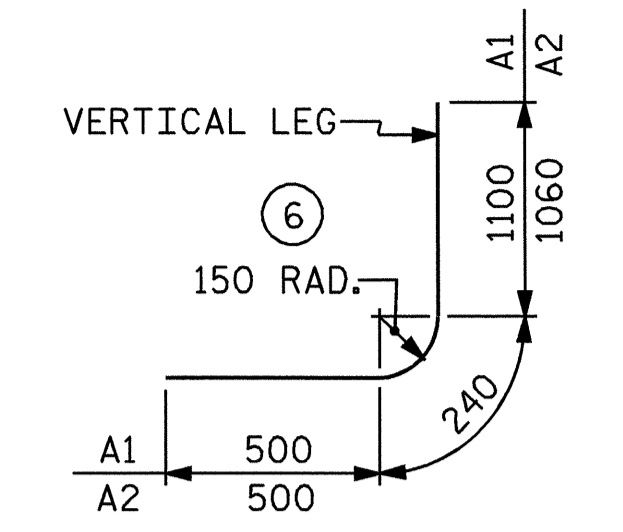


CULVERT SECTION NORMAL TO ROADWAY (INLET END, STAGE I)

BAR TYPE		BILL OF MATERIAL				
		STAGE I				
BAR	NO.	SIZE	TYPE	LENGTH	WEIGHT	
A100	106	#13	STR	4680	493	
A101	1	#13	STR	3760	4	
A102	1	#13	STR	2980	3	
A103	1	#13	STR	2180	2	
A104	1	#13	STR	1400	1	
A105	1	#13	STR	600	1	
A200	106	#13	STR	4680	493	
A201	1	#13	STR	3760	4	
A202	1	#13	STR	2980	3	
A203	1	#13	STR	2180	2	
A204	1	#13	STR	1400	1	
A205	1	#13	STR	600	1	
A300	110	#19	STR	4680	1151	
A301	1	#19	STR	3780	8	
A302	1	#19	STR	3040	7	
A303	1	#19	STR	2280	5	
A304	1	#19	STR	1540	3	
A305	1	#19	STR	820	2	
A400	110	#19	STR	4680	1151	
A401	1	#19	STR	3780	8	
A402	1	#19	STR	3040	7	
A403	1	#19	STR	2280	5	
A404	1	#19	STR	1540	3	
A405	1	#19	STR	820	2	
A1	232	#13	6	1840	424	
A2	232	#13	6	1800	415	
B1	154	#13	STR	2060	315	
B3	154	#13	STR	2060	315	
C1	174	#13	STR	8480	1467	
G1	4	#13	STR	4880	19	
S2	6	#25	STR	4880	116	
REINFORCING STEEL					= 6431 KG	

SPlice LENGTH CHART		
BAR	SIZE	SPlice LENGTH
A200	#13	540
A400	#19	690
B1	#13	540
B3	#13	540
C1	#13	590

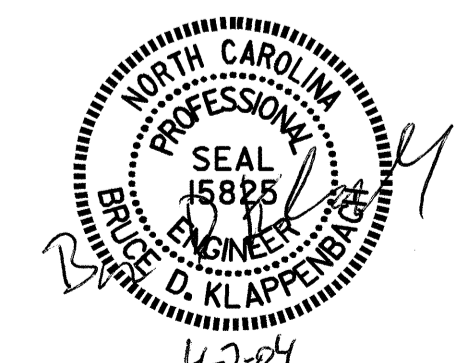


PLAN OF CULVERT (INLET END, STAGE I)

PROJECT NO. R-2514A
ONSLow COUNTY
 STATION: 161+33.500 -L- MED.

SHEET 3 OF 5

STATE OF NORTH CAROLINA
 DEPARTMENT OF TRANSPORTATION
 RALEIGH
**DOUBLE 2.100m X 1.800m
 CONCRETE BOX CULVERT
 (STAGE I)
 101° SKEW**



REVISIONS						SHEET NO.	
NO.	BY:	DATE:	NO.	BY:	DATE:	C-7	
1			3			TOTAL SHEETS	
2			4			9	

DRAWN BY : D. A. GLADDEN DATE : 4-2-03
 CHECKED BY : M. G. SHAIKH DATE : 7-03