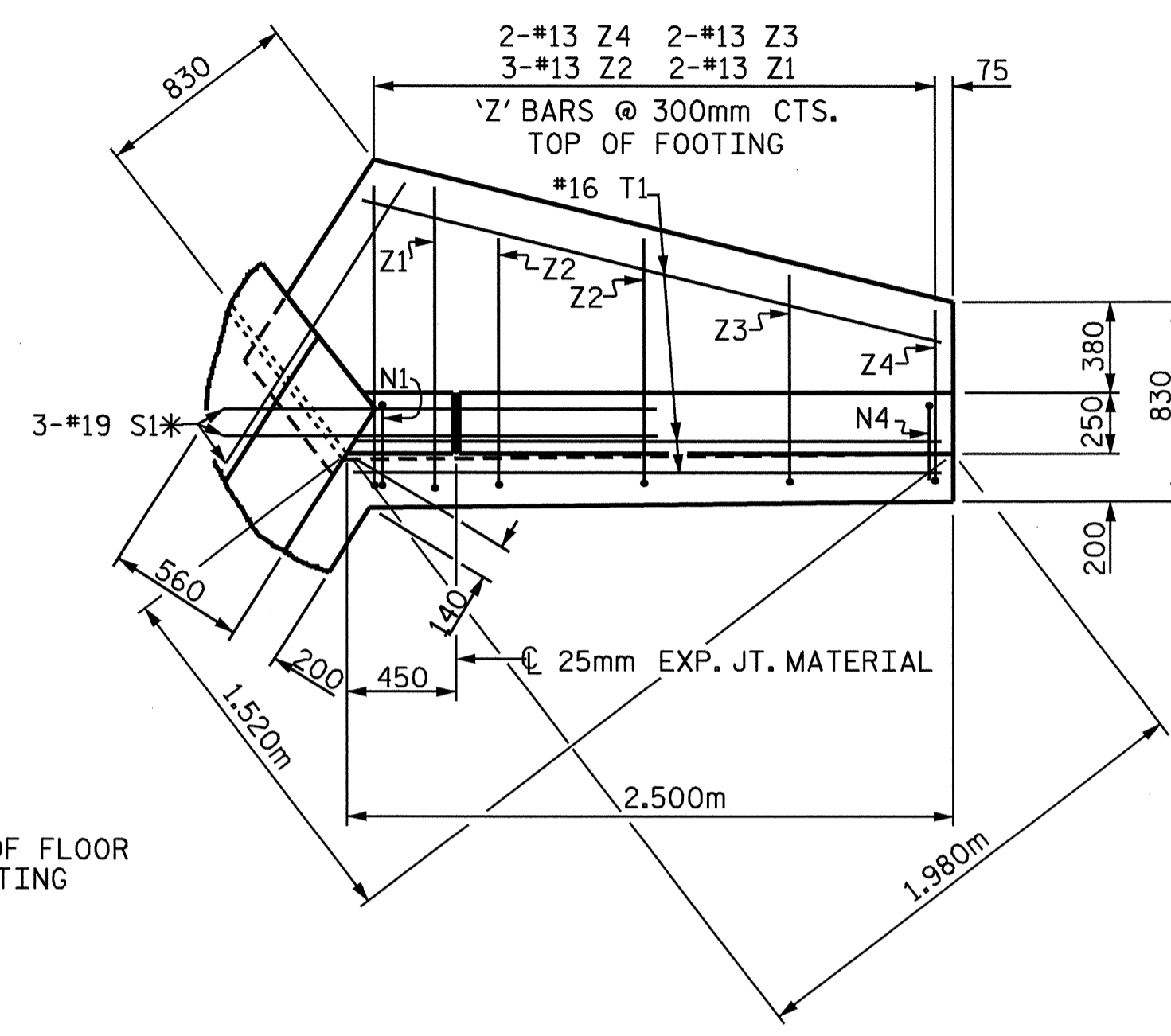
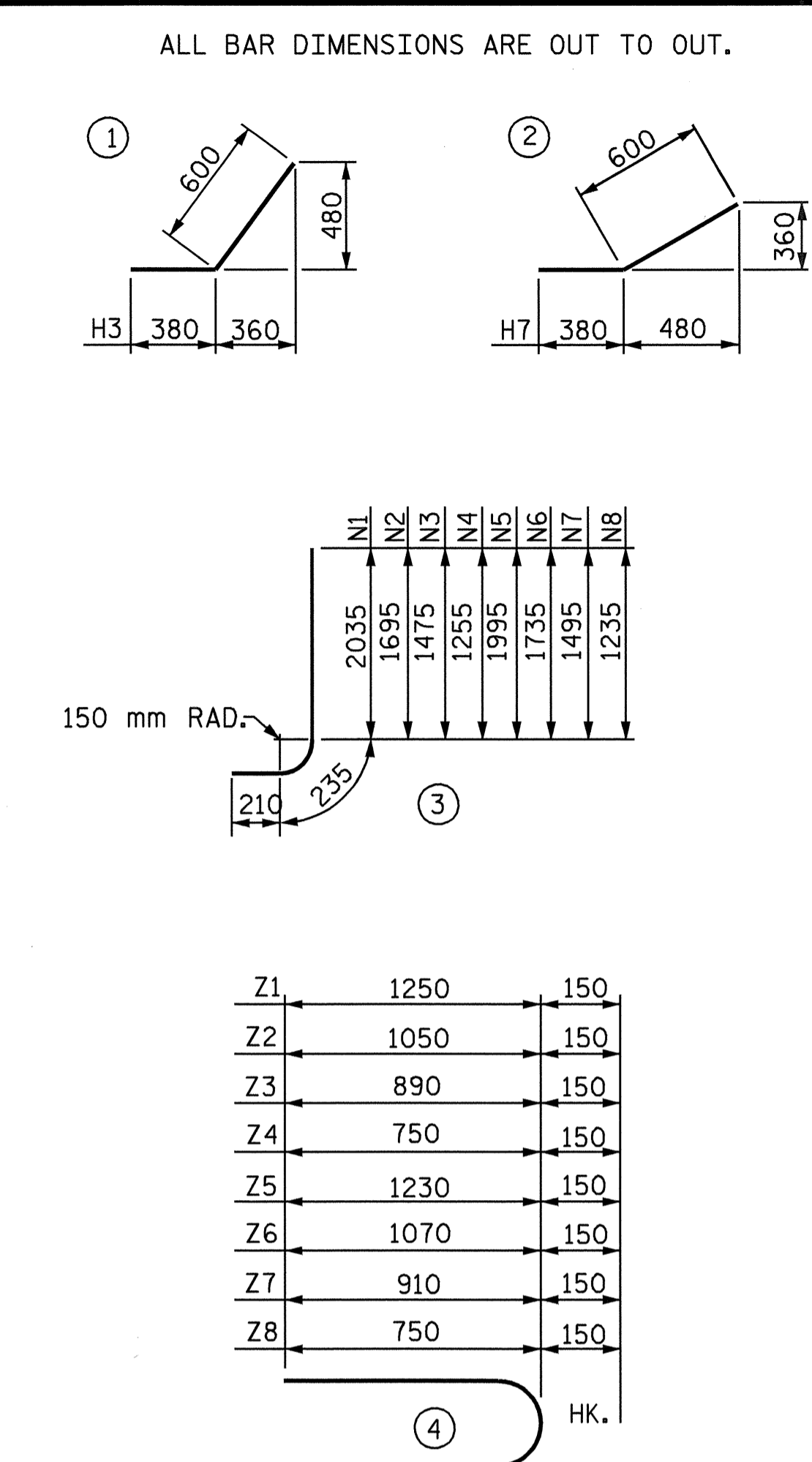


PLAN W1



PLAN W2

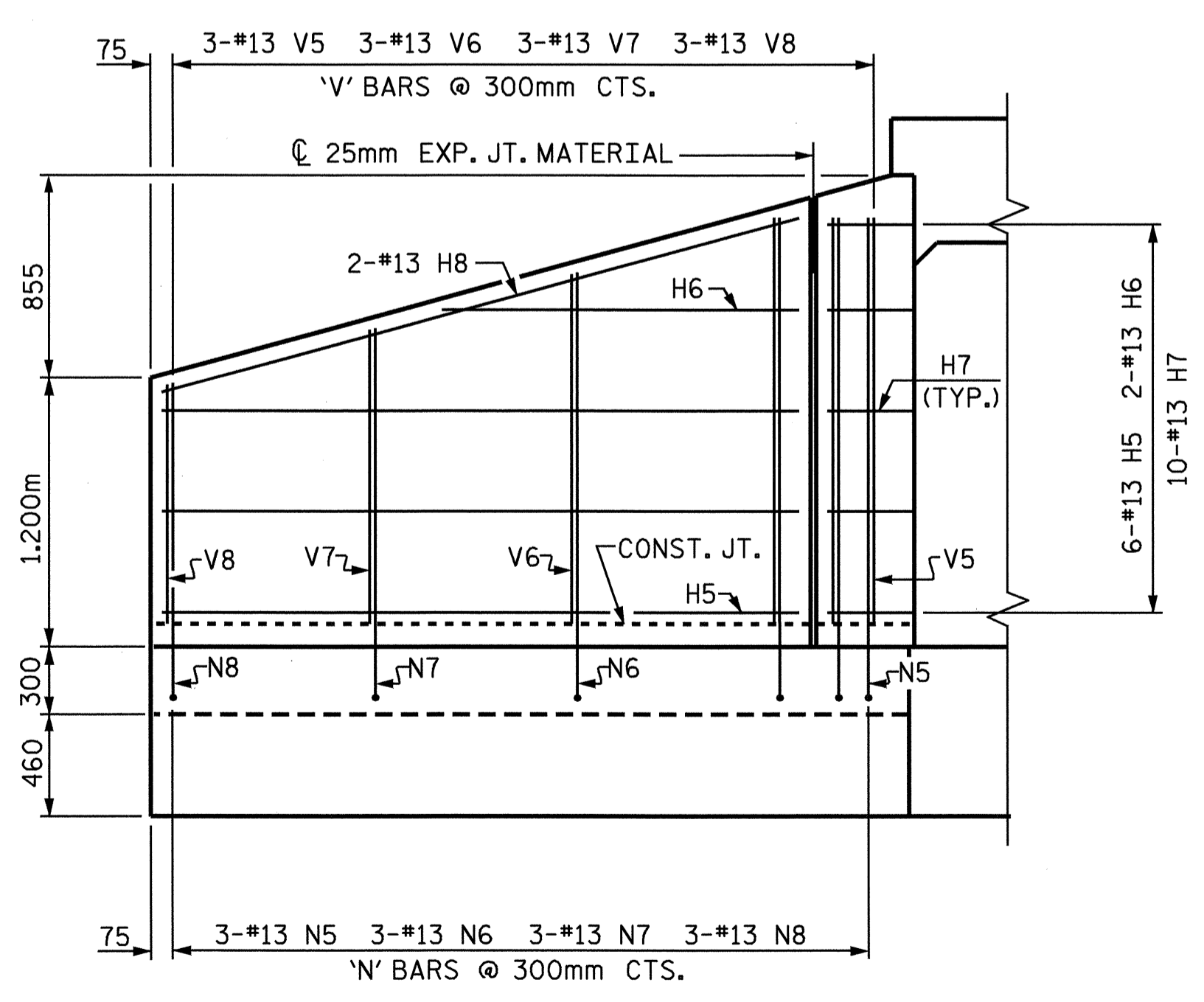
BAR TYPES



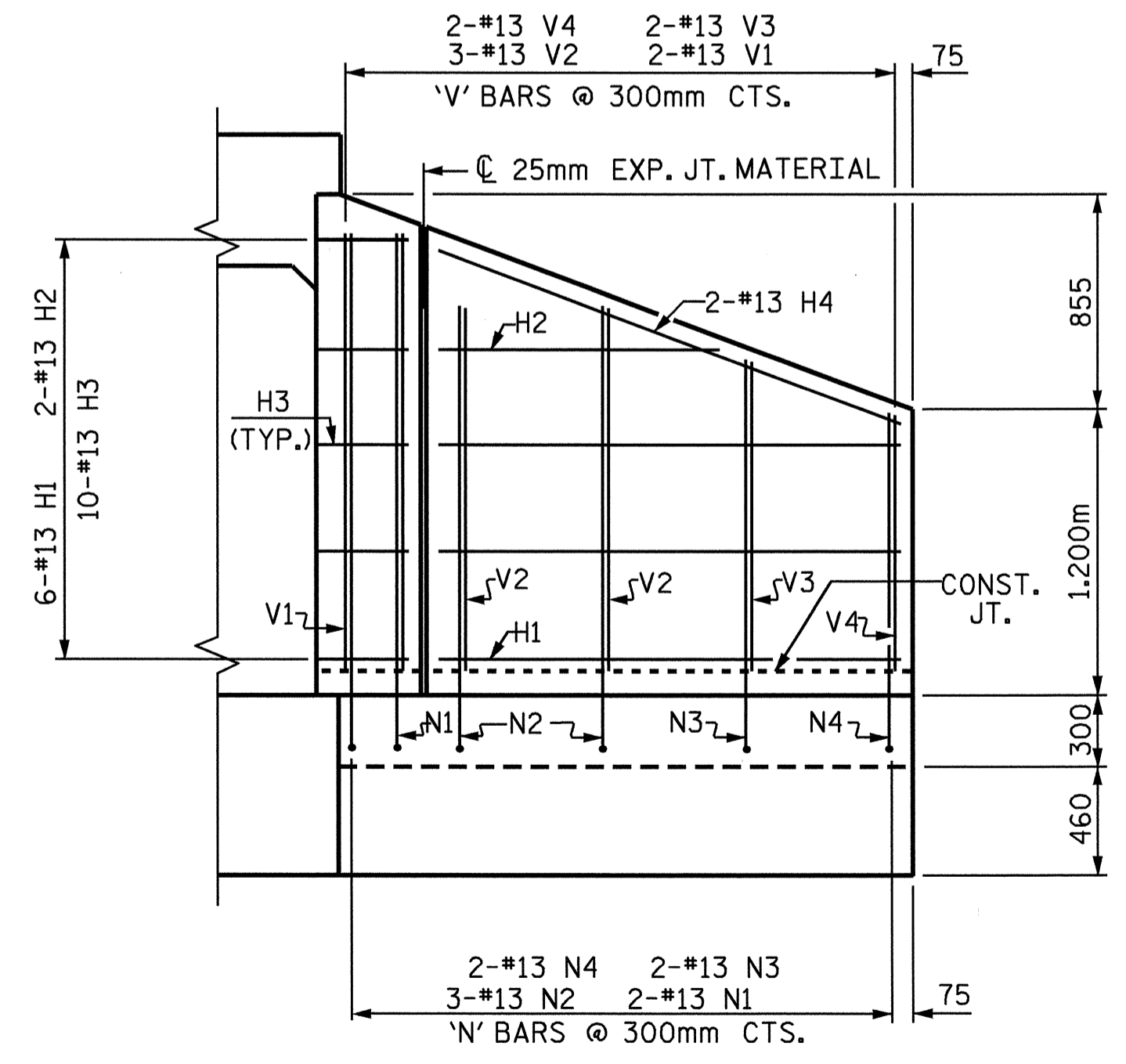
BILL OF MATERIAL

BAR NO.	SIZE	TYPE	LENGTH	WEIGHT	
H1	12	13	STR	1940	23
H2	4	13	STR	1060	4
H3	20	13	1	980	19
H4	4	13	STR	2060	8
H5	12	13	STR	2840	34
H6	4	13	STR	1680	7
H7	20	13	2	980	19
H8	4	13	STR	2940	12
N1	4	13	3	2480	10
N2	6	13	3	2140	13
N3	4	13	3	1920	8
N4	4	13	3	1700	7
N5	6	13	3	2440	15
N6	6	13	3	2180	13
N7	6	13	3	1940	12
N8	6	13	3	1680	10
S1	12	19	STR	1800	48
T1	6	16	STR	2500	23
T2	6	16	STR	3400	32
V1	4	13	STR	1860	7
V2	6	13	STR	1520	9
V3	4	13	STR	1300	5
V4	4	13	STR	1080	4
V5	6	13	STR	1820	11
V6	6	13	STR	1560	9
V7	6	13	STR	1320	8
V8	6	13	STR	1060	6
Z1	4	13	4	1400	6
Z2	6	13	4	1200	7
Z3	4	13	4	1040	4
Z4	4	13	4	900	4
Z5	6	13	4	1380	8
Z6	6	13	4	1220	7
Z7	6	13	4	1060	6
Z8	6	13	4	900	5

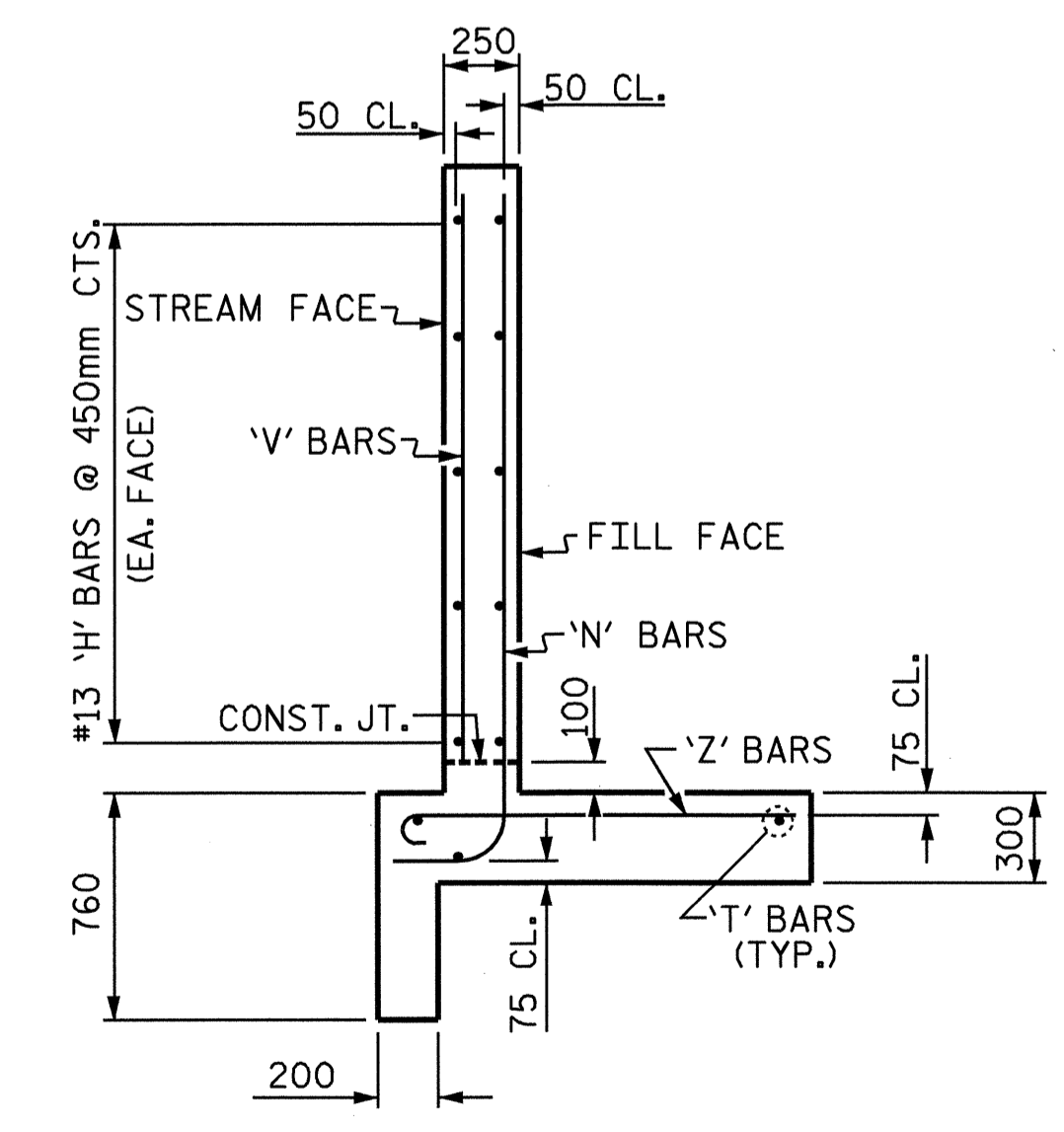
REINFORCING STEEL FOR 4 WINGS	423 kg
CLASS A CONCRETE	
4 WINGS	10.2 m ³
2 HEADWALLS	1.1 m ³
2 END CURTAIN WALLS	1.3 m ³
TOTAL	12.6 m³



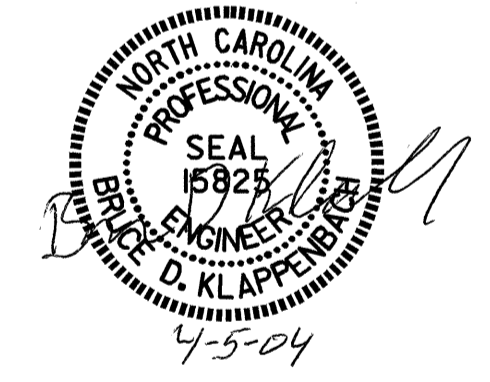
ELEVATION W1



ELEVATION W2



TYPICAL WING SECTION



PROJECT NO. R-2514A
ONslow COUNTY
 STATION: 161+33.500 -L- MED.

SHEET 5 OF 5
 STATE OF NORTH CAROLINA
 DEPARTMENT OF TRANSPORTATION
 RALEIGH
 STANDARD WINGS
 FOR
 CONCRETE BOX CULVERT
 H = 1.800m SLOPE 2:1
 75° OR 105° SKEW

ASSEMBLED BY : D. A. GLADDEN DATE : 4-2-03
 CHECKED BY : M. G. SHAIKH DATE : 7-03
 DRAWN BY : KJA 6/97
 CHECKED BY : VAP 12/97

FOR WING ORIENTATION, SEE BARREL STANDARD SHEET.

REVISIONS						TOTAL SHEETS
NO.	BY:	DATE:	NO.	BY:	DATE:	
1			3			9
2			4			9