

PIPE HYDRAULIC DATA
DRAINAGE STRUCTURE NO. 1

DRAINAGE AREA	100	SQ. FT.
DESIGN DISCHARGE	1.0	CFS
DESIGN VELOCITY	4.0	FT./SEC.
DESIGN FRICTION LOSS	0.0004	FT./100 FT.
DESIGN HEAD LOSS	0.04	FT.
DESIGN DEPTH	2.0	FT.
DESIGN VELOCITY	4.0	FT./SEC.
DESIGN DISCHARGE	1.0	CFS
DESIGN HEAD LOSS	0.04	FT.
DESIGN VELOCITY	4.0	FT./SEC.
DESIGN DISCHARGE	1.0	CFS

TAYLOR • WISEMAN • TAYLOR
ENGINEERS • SURVEYORS • PLANNERS
100 N. W. 10th St. Suite 100, Raleigh, N.C. 27605
PH: 919.978.8333 FAX: 919.978.8335

METRIC

PROJECT REFERENCE NO. R2514-A
ROADWAY DESIGN ENGINEER

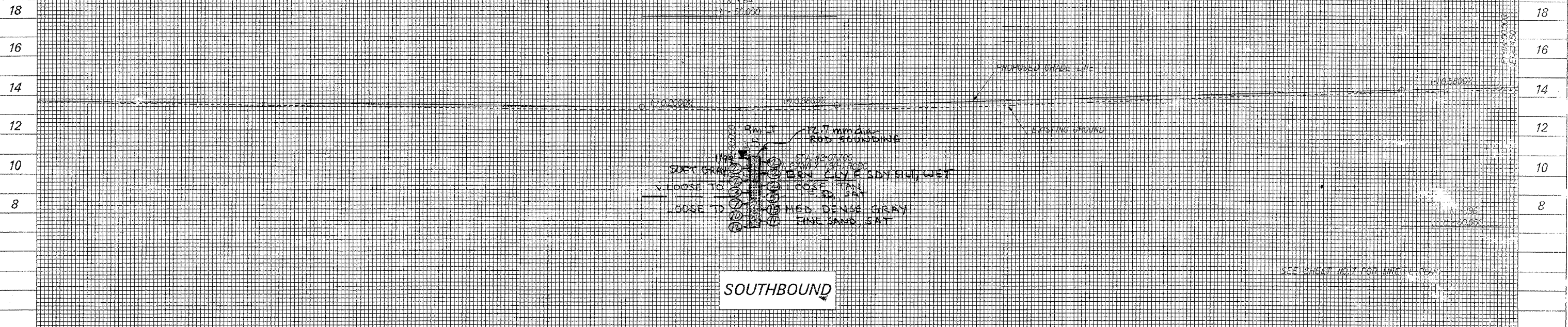
SHEET NO. 34
HYDRAULICS ENGINEER

5 0 10

CONST. REV.
R/W REV.

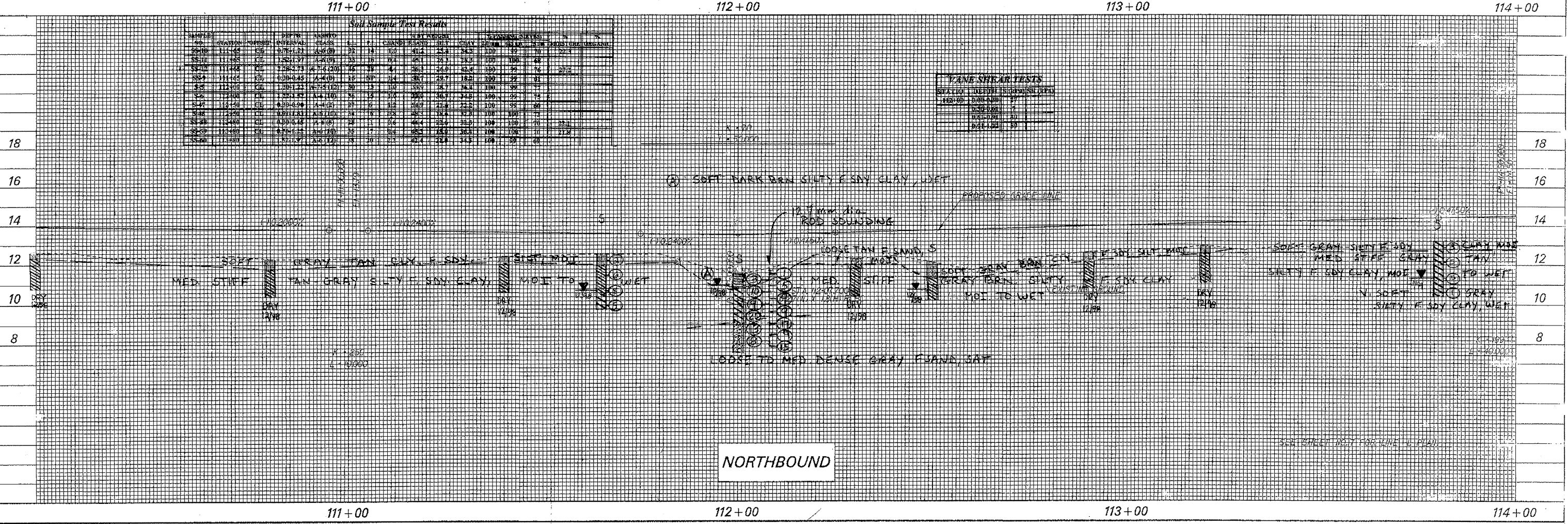
Soil Sample Test Results

SAMPLE NO.	STATION	DEPTH	DEPTH INTERVAL	CLASS	W	L	U _c	U _s	U _w	U _z	U _h	U _v	U _h	U _v	U _h	U _v	U _h	U _v	U _h	U _v	U _h	U _v	U _h	U _v
SS-1	112+04	9' to 11'	2' 0"	A-1(1)	25	NP	2.4	5.5	20.0	10	0	0	0	0	0	0	0	0	0	0	0	0	0	0
SS-2	112+04	9' to 11'	2' 0"	A-1(1)	18	NP	10.5	8.8	1.0	100	0	0	0	0	0	0	0	0	0	0	0	0	0	0
SS-3	112+04	11' to 13'	2' 0"	A-1(1)	20	NP	23.8	20.5	2.0	100	0	0	0	0	0	0	0	0	0	0	0	0	0	0
SS-4	112+04	13' to 15'	2' 0"	A-1(1)	18	NP	27.0	24.5	3.0	100	0	0	0	0	0	0	0	0	0	0	0	0	0	0



Soil Sample Test Results

SAMPLE NO.	STATION	DEPTH	DEPTH INTERVAL	CLASS	W	L	U _c	U _s	U _w	U _z	U _h	U _v	U _h	U _v	U _h	U _v	U _h	U _v	U _h	U _v	U _h	U _v	U _h	U _v
SS-5	111+42	0' to 1.25'	1.25'	A-1(1)	25	NP	2.4	5.5	20.0	10	0	0	0	0	0	0	0	0	0	0	0	0	0	0
SS-6	111+42	1.25' to 2.5'	1.25'	A-1(1)	18	NP	10.5	8.8	1.0	100	0	0	0	0	0	0	0	0	0	0	0	0	0	0
SS-7	111+42	2.5' to 3.75'	1.25'	A-1(1)	20	NP	23.8	20.5	2.0	100	0	0	0	0	0	0	0	0	0	0	0	0	0	0
SS-8	111+42	3.75' to 5.0'	1.25'	A-1(1)	18	NP	27.0	24.5	3.0	100	0	0	0	0	0	0	0	0	0	0	0	0	0	0
SS-9	111+42	5.0' to 6.25'	1.25'	A-1(1)	25	NP	2.4	5.5	20.0	10	0	0	0	0	0	0	0	0	0	0	0	0	0	0
SS-10	111+42	6.25' to 7.5'	1.25'	A-1(1)	18	NP	10.5	8.8	1.0	100	0	0	0	0	0	0	0	0	0	0	0	0	0	0
SS-11	111+42	7.5' to 8.75'	1.25'	A-1(1)	20	NP	23.8	20.5	2.0	100	0	0	0	0	0	0	0	0	0	0	0	0	0	0
SS-12	111+42	8.75' to 10.0'	1.25'	A-1(1)	18	NP	27.0	24.5	3.0	100	0	0	0	0	0	0	0	0	0	0	0	0	0	0
SS-13	111+42	10.0' to 11.25'	1.25'	A-1(1)	25	NP	2.4	5.5	20.0	10	0	0	0	0	0	0	0	0	0	0	0	0	0	0
SS-14	111+42	11.25' to 12.5'	1.25'	A-1(1)	18	NP	10.5	8.8	1.0	100	0	0	0	0	0	0	0	0	0	0	0	0	0	0
SS-15	111+42	12.5' to 13.75'	1.25'	A-1(1)	20	NP	23.8	20.5	2.0	100	0	0	0	0	0	0	0	0	0	0	0	0	0	0
SS-16	111+42	13.75' to 15.0'	1.25'	A-1(1)	18	NP	27.0	24.5	3.0	100	0	0	0	0	0	0	0	0	0	0	0	0	0	0



20-MAR-2008 11:33 AM C:\Users\jdh\Documents\2008\20080320\20080320.dgn