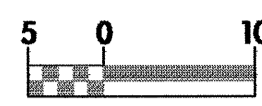
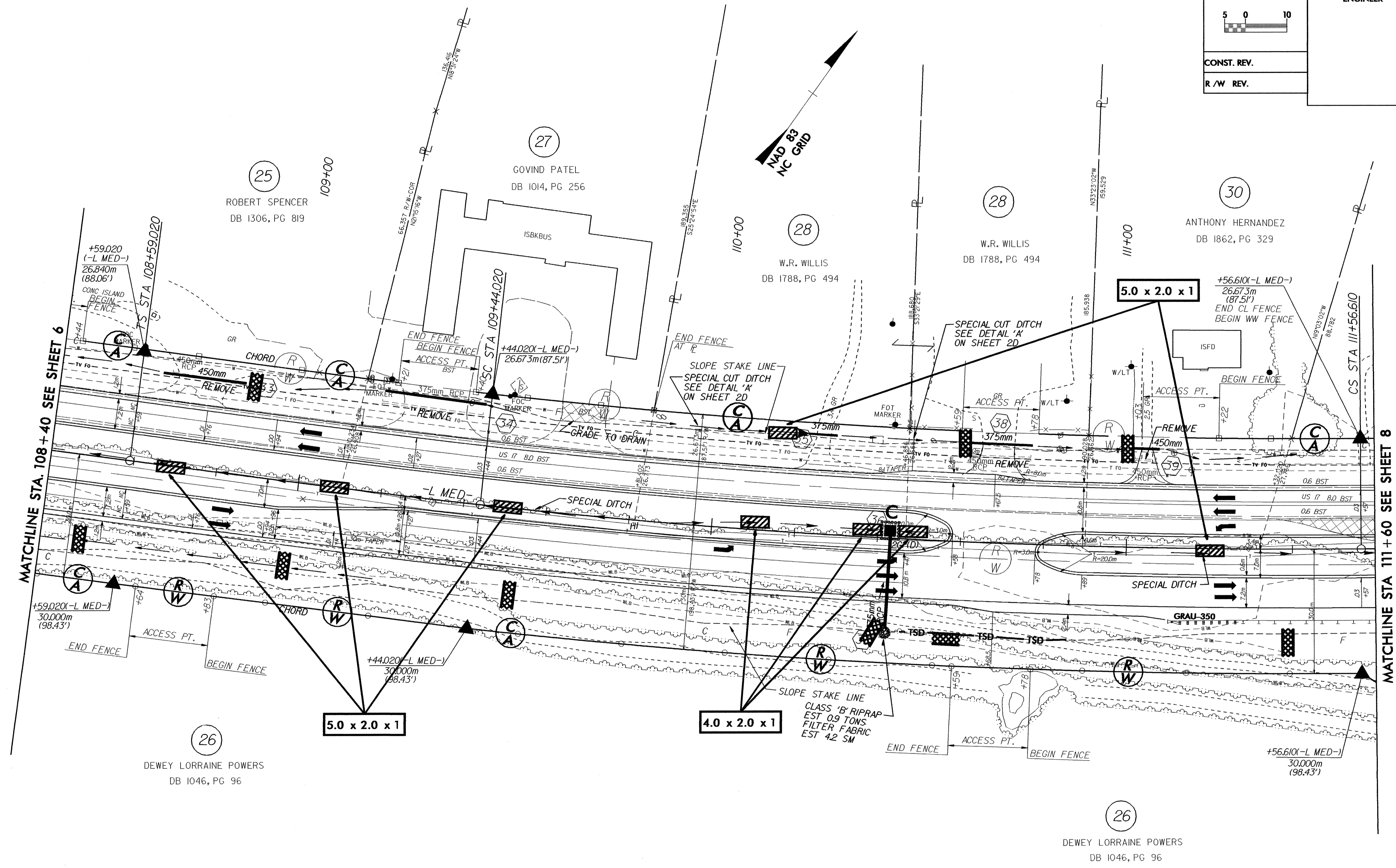
	PROJECT REFERENCE NO.	SHEET NO.
	R-2514A	EC-38/CONST. 7
	R /W SHEET NO.	
	ROADWAY DESIGN ENGINEER	HYDRAULICS ENGINEER
CONST. REV.		
R /W REV.		



-L MED-		
PIs Sta 109+15.688	PI Sta 110+50.439	PIs Sta 111+84.945
$\theta_s = 1^\circ 21' 10.1''$	$\Delta = 6^\circ 46' 01.0''$ (LT)	$\theta_s = 1^\circ 21' 10.1''$
$L_s = 85.000$	$L = 212.590$	$L_s = 85.000$
$LT = 56.668$	$T = 106.419$	$LT = 56.668$
$ST = 28.335$	$R = 1,800.000$	$ST = 28.335$
	$SE = 0.03$	

SEE SHEET NO. 2D FOR ALL DRIVEWAY DETAILS.

SEE SHEET NO. 2D FOR ALL DITCH DETAILS.

SEE SHEET NO. 37 FOR NBL & SBL GRADES AND PROFILES AND ALL DITCH GRADES AND PROFILES.

MATCHLINE STA. 108 + 40 SEE SHEET 6

MATCHLINE STA 111 + 60 SEE SHEET 8

25  
ROBERT SPENCER  
DB 1306, PG 819

27  
GOVIND PATEL  
DB 1014, PG 256

28  
W.R. WILLIS  
DB 1788, PG 494

30  
ANTHONY HERNANDEZ  
DB 1862, PG 329

26  
DEWEY LORRAINE POWERS  
DB 1046, PG 96

26  
DEWEY LORRAINE POWERS  
DB 1046, PG 96