

MULKEY
ENGINEERS & CONSULTANTS
P.O. Box 22127
Raleigh, N.C. 27626
(919) 851-1212 (FAX)
WWW.MULKEYINC.COM

SUNGATE DESIGN GROUP
915-A Jones Franklin Rd.
Raleigh, N.C. 27606
(919) 859-2243
(919) 859-6258 (FAX)

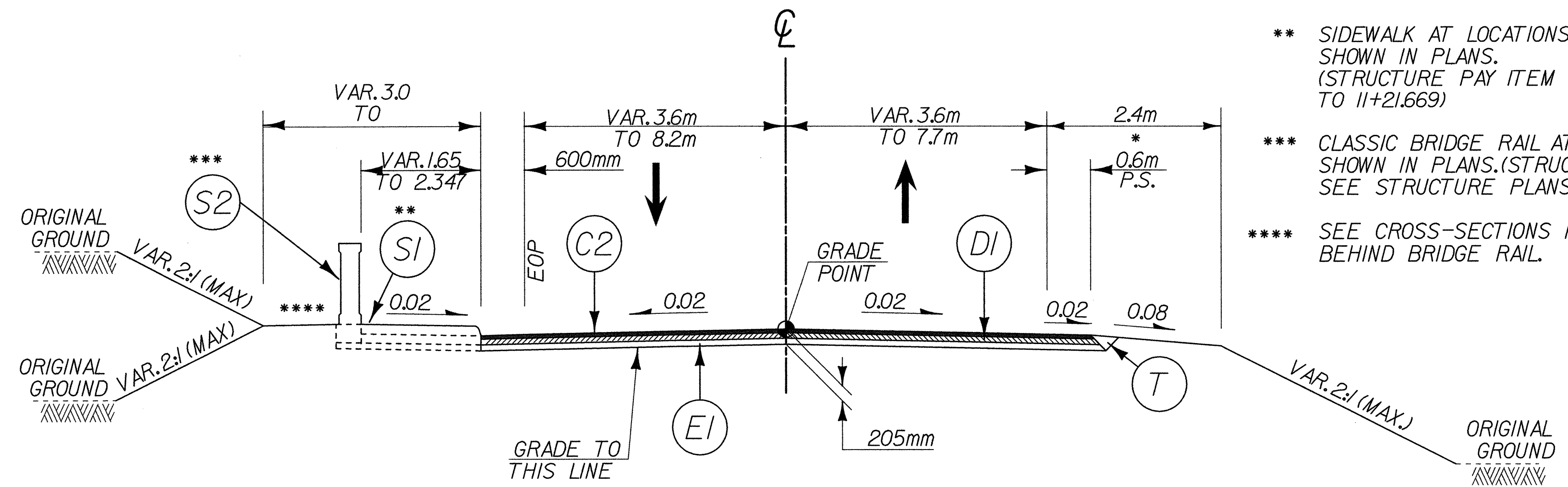
PROJECT REFERENCE NO. B-2583 SHEET NO. 2-A

HIGHWAY DESIGN ENGINEER
PAVEMENT DESIGN ENGINEER

SEAL 14509
NORTH CAROLINA PROFESSIONAL ENGINEER
W.S. HARRIS
10/29/04

SEAL 13368
NORTH CAROLINA PROFESSIONAL ENGINEER
CHI CHEN
11/8/04

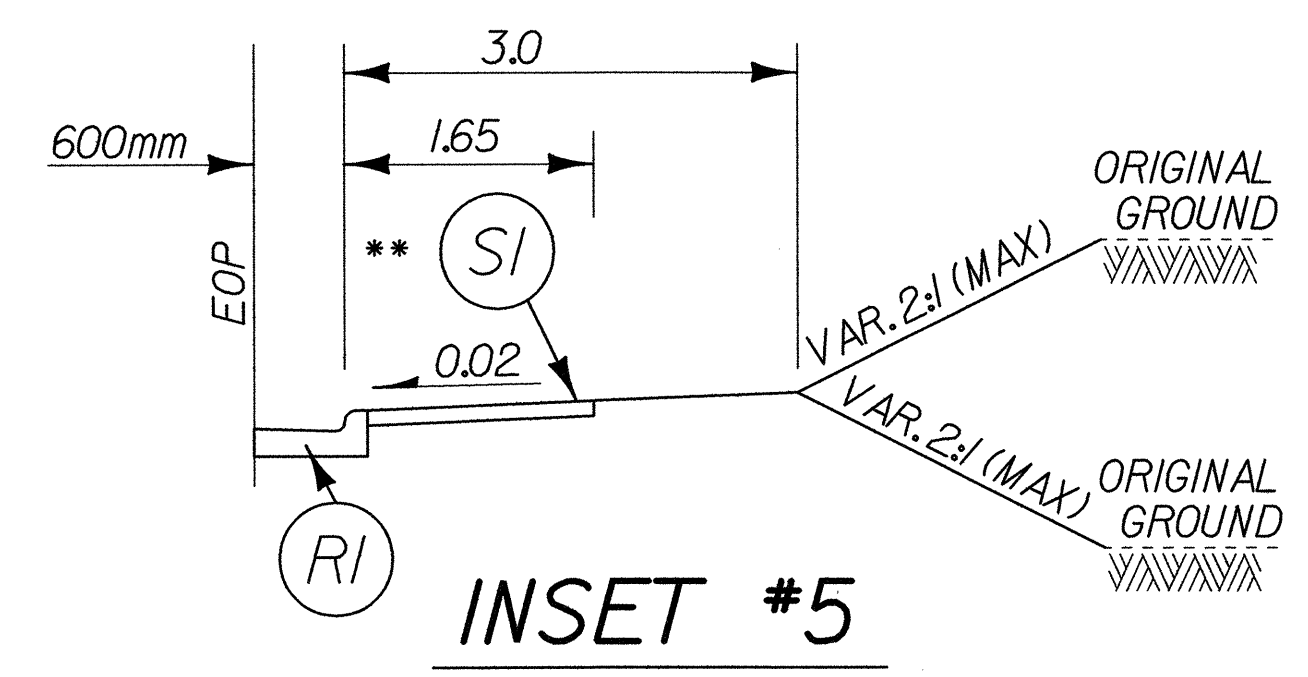
CONST. REV.
R/W REV.



TYPICAL SECTION NO. 2

USE TYPICAL SECTION No.2 AS FOLLOWS:
 FROM -L- STA.11+14 TO -L- STA.11+21.673 (BEGIN BRIDGE)
 FROM -L- STA.13+18.500 (END BRIDGE) TO -L- STA.13+31.7
 FROM -YI- STA.10+71.145 TO -YI- STA.10+74.500 (BEGIN BRIDGE)
 FROM -YI- STA.11+31.500 (END BRIDGE) TO -YI- STA.11+46.942
 (SEE INSET #5 & #6)

- * 3.4m W/ GUARDRAIL.
- ** SIDEWALK AT LOCATIONS SHOWN IN PLANS. (STRUCTURE PAY ITEM -L- STA.11+14 TO 11+21.669)
- *** CLASSIC BRIDGE RAIL AT LOCATIONS SHOWN IN PLANS. (STRUCTURE PAY ITEM, SEE STRUCTURE PLANS FOR DETAILS.)
- **** SEE CROSS-SECTIONS FOR SLOPE BEHIND BRIDGE RAIL.

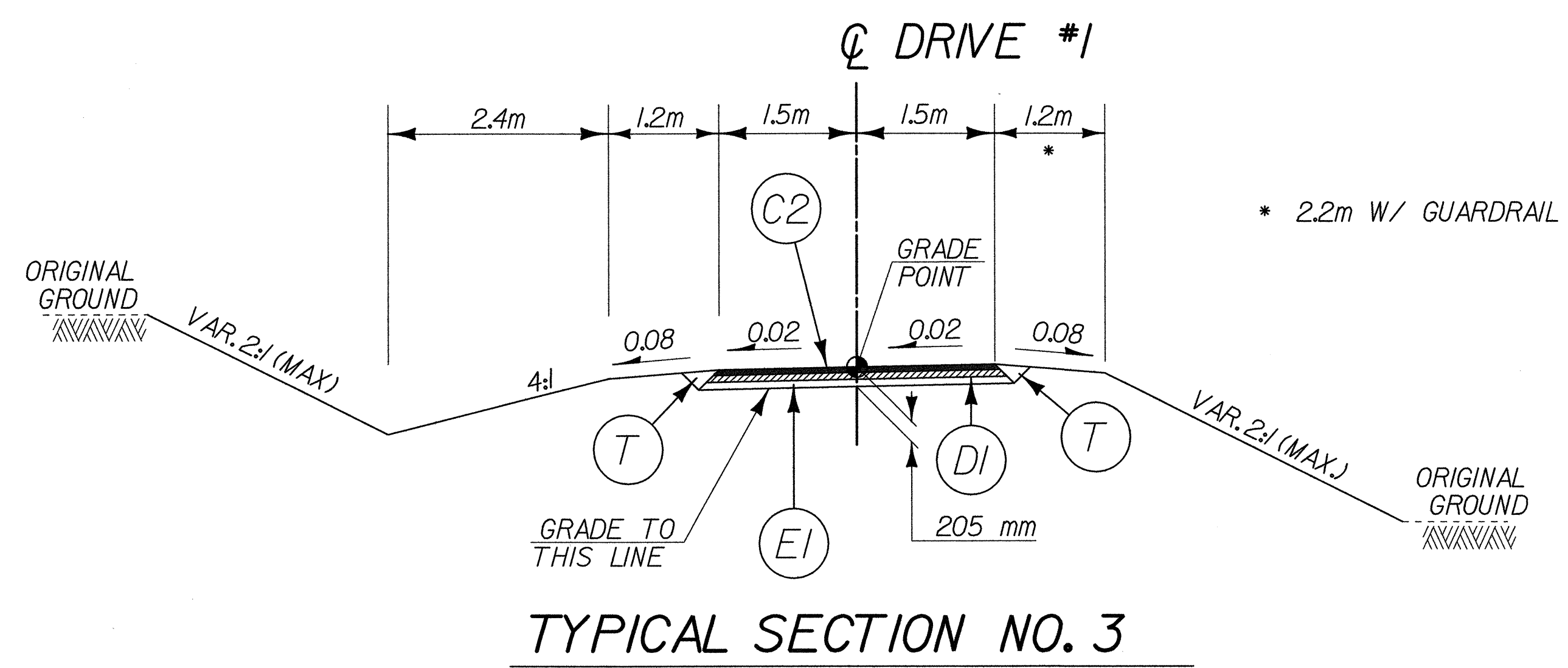


INSET #5

TO BE USED IN CONJUNCTION WITH TYPICAL SECTION NO.2 AS FOLLOWS:
 FROM -YI- STA.10+37 TO -YI- STA.10+71.145 (BEGIN BRIDGE) LT. & RT.
 FROM -YI- STA.11+34.855 TO -YI- STA.11+38.803 RT.

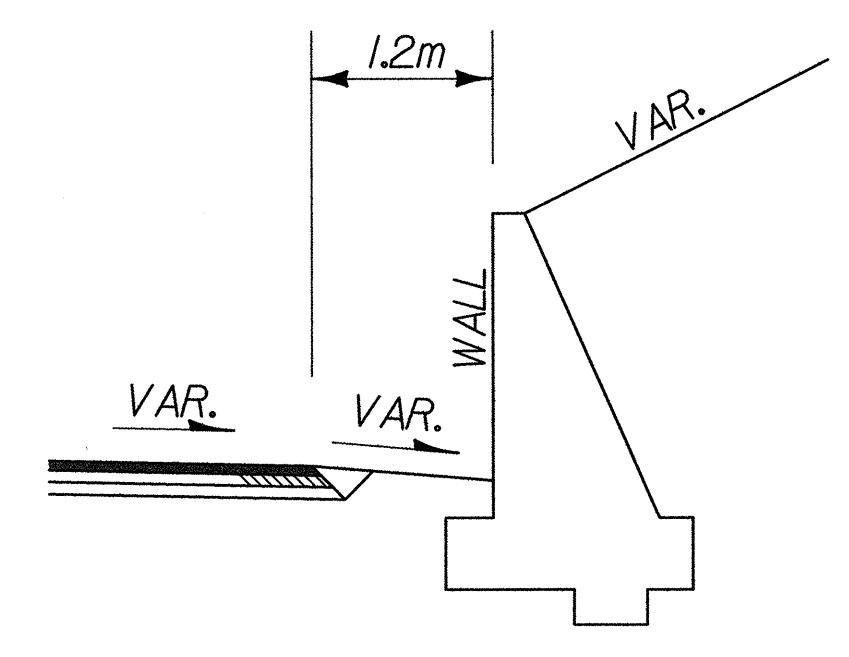
C1	30mm SF9.5A
C2	60mm SF9.5A
C3	VAR.DEPTH SF9.5A
D1	65mm 119.0B
D2	VAR.DEPTH 1-19.0B
E1	80mm B25.0B
E2	VAR.DEPTH B25.0B
R1	750mm CONC. CURB & GUTTER
S1	100mm SIDEWALK
S2	CLASSIC BRIDGE RAIL
T	EARTH MATERIAL
U	EXIST.PAVEMENT
W1	WEDGING

NOTE:
 1. SEE SHEET 2 FOR DETAILED DESCRIPTION OF PAVEMENT SCHEDULE
 2. ALL PAVEMENT EDGE SLOPES ARE 1:1 UNLESS OTHERWISE SHOWN.



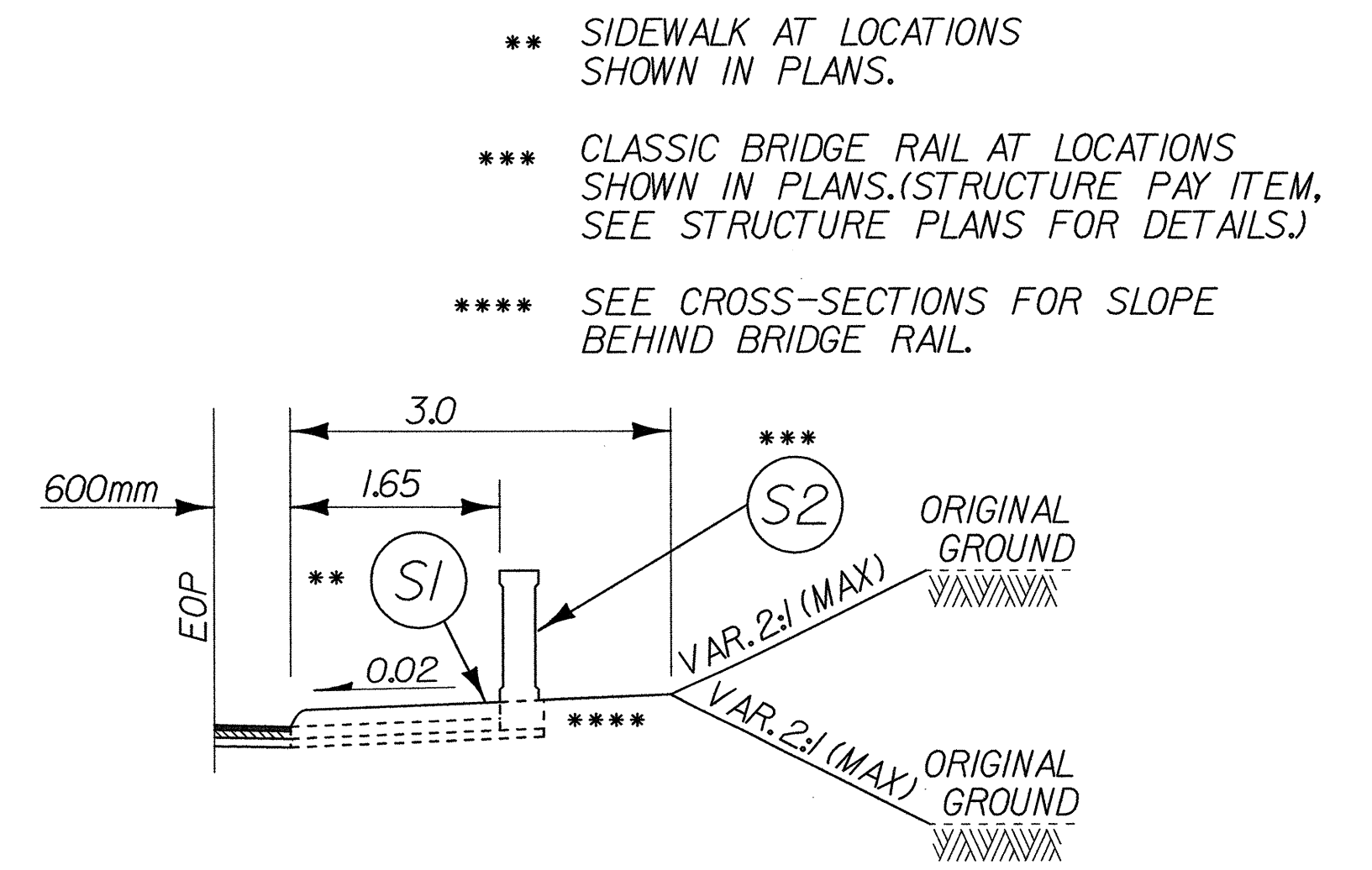
TYPICAL SECTION NO. 3

USE TYPICAL SECTION No.3 AS FOLLOWS:
 FROM DRIVE #1 STA.10+10.000 TO DRIVE #1 STA.10+73.655
 (SEE INSET #7)



INSET #7

TO BE USED IN CONJUNCTION WITH TYPICAL SECTION NO.3 AS FOLLOWS:
 FROM DRIVE #1 STA.10+23 TO DRIVE #1 STA.10+55 RT



INSET #6

TO BE USED IN CONJUNCTION WITH TYPICAL SECTION NO.2 AS FOLLOWS:
 FROM -YI- STA.11+31.500 (END BRIDGE) TO -YI- STA.11+46.942 LT.