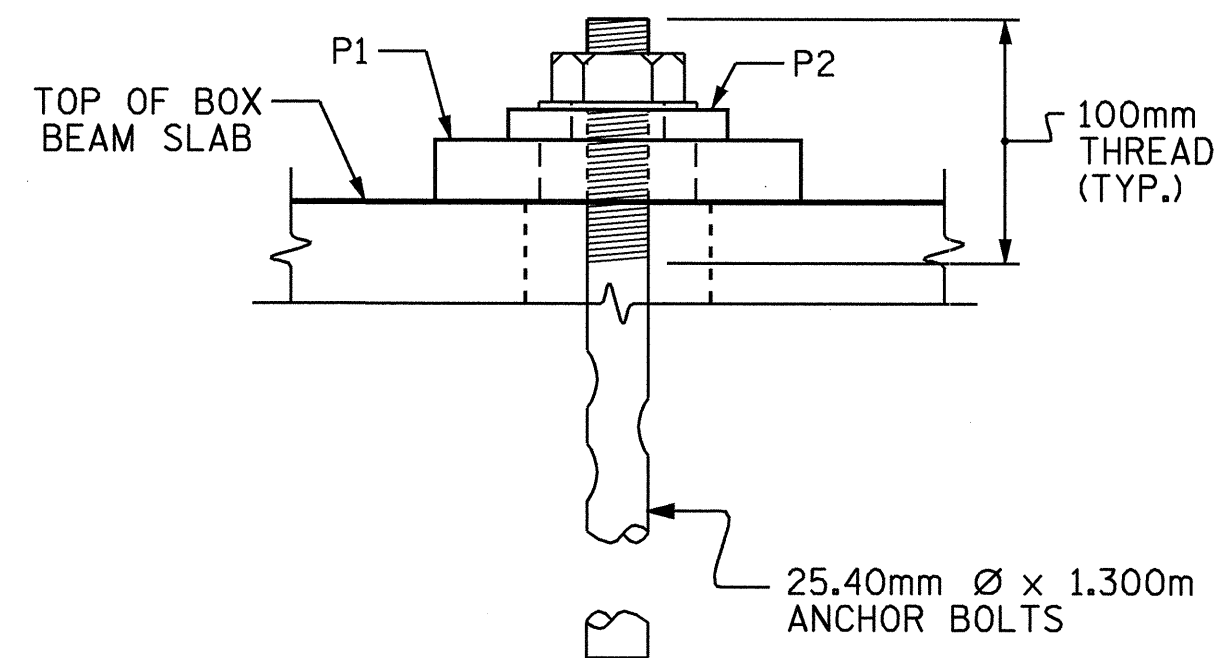
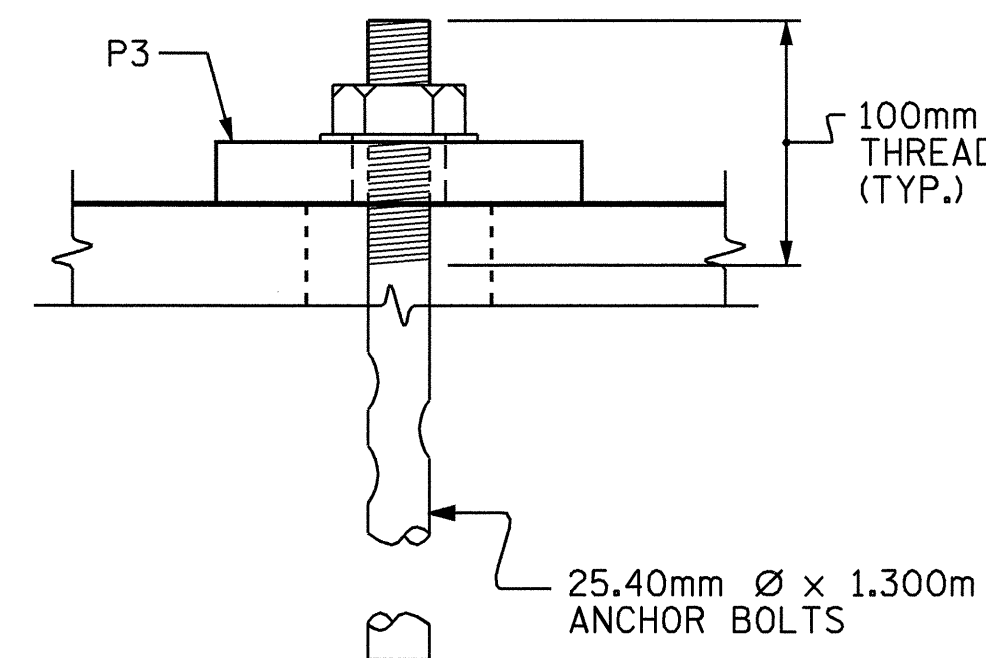


TYPICAL HALF-PLAN
(SHOWING EXPANSION ENDS)

TYPICAL HALF-PLAN
(SHOWING FIXED ENDS)



SECTION A-A
(EXPANSION)



SECTION B-B
(FIXED)

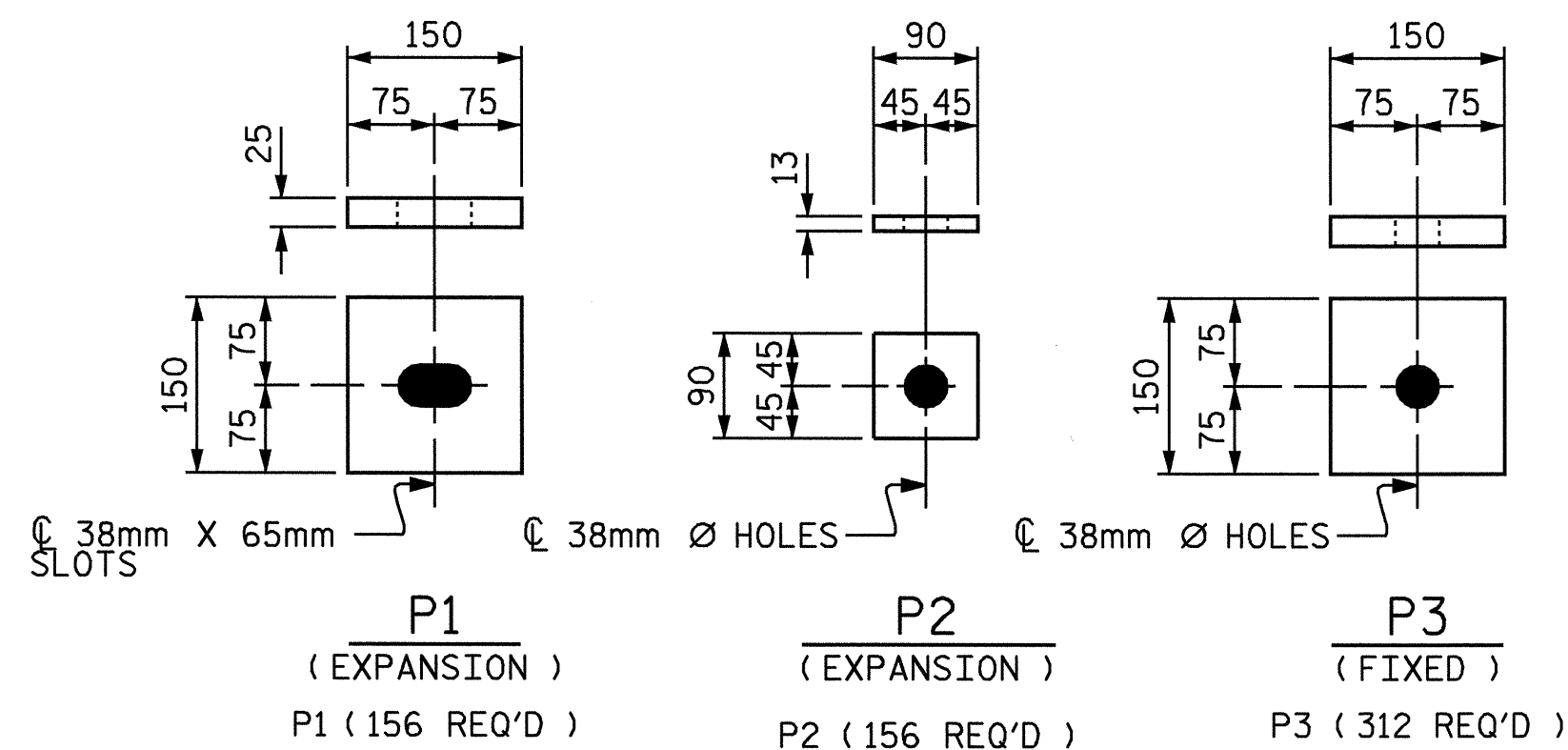
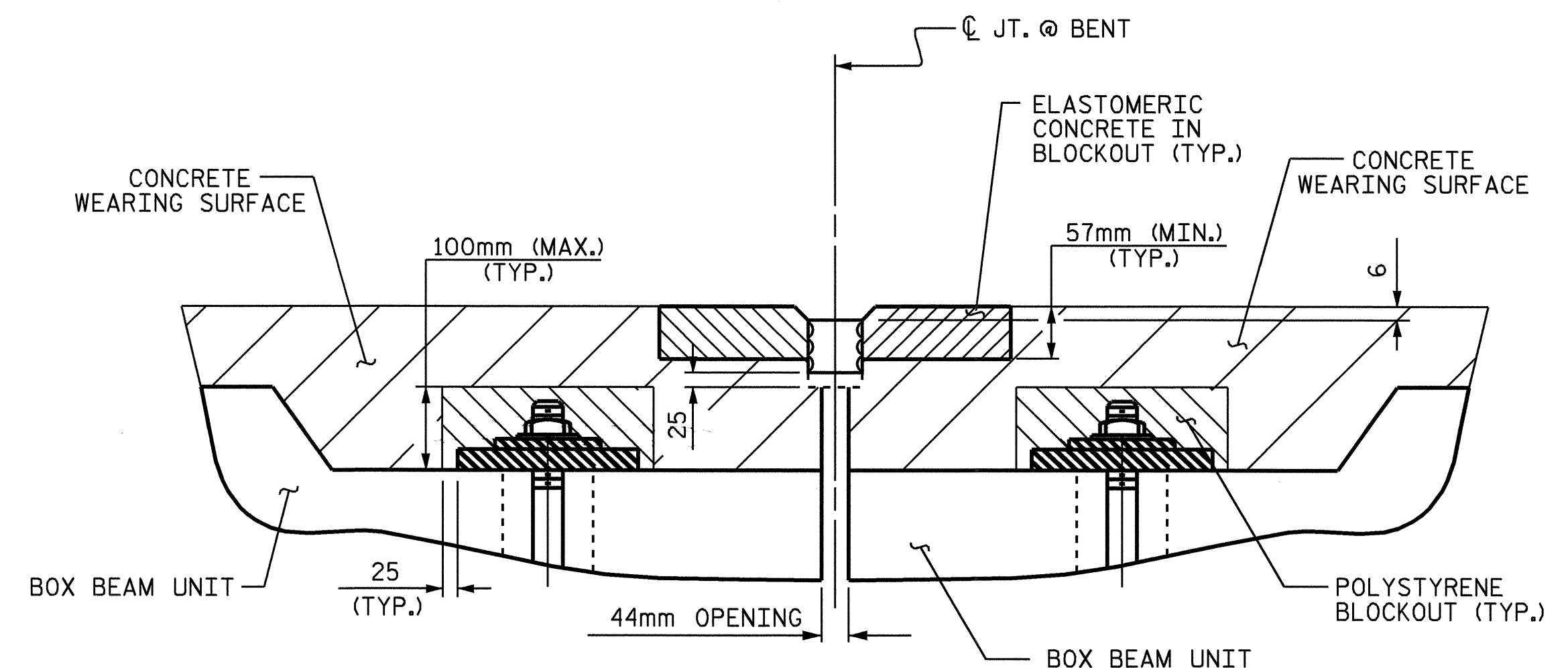
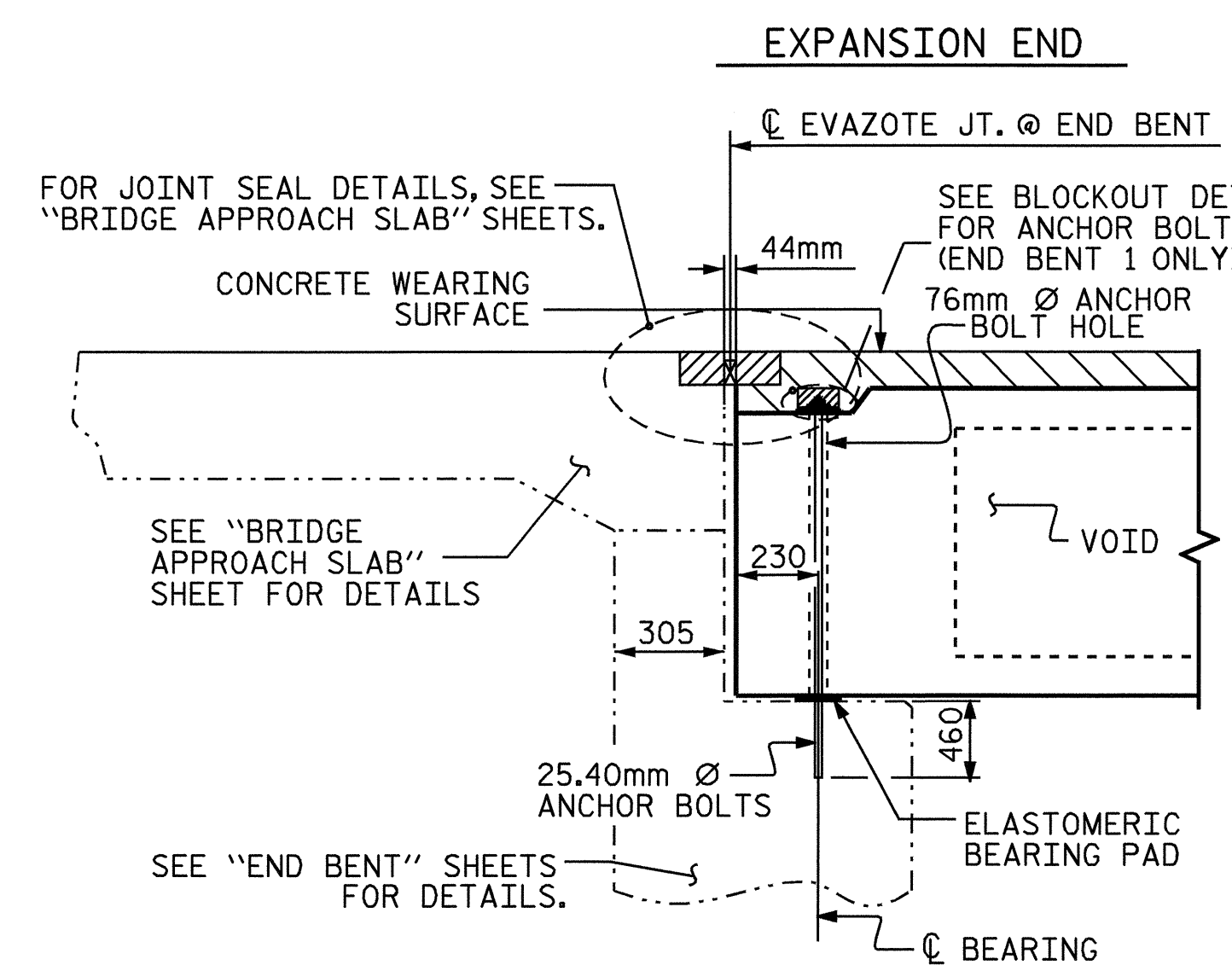


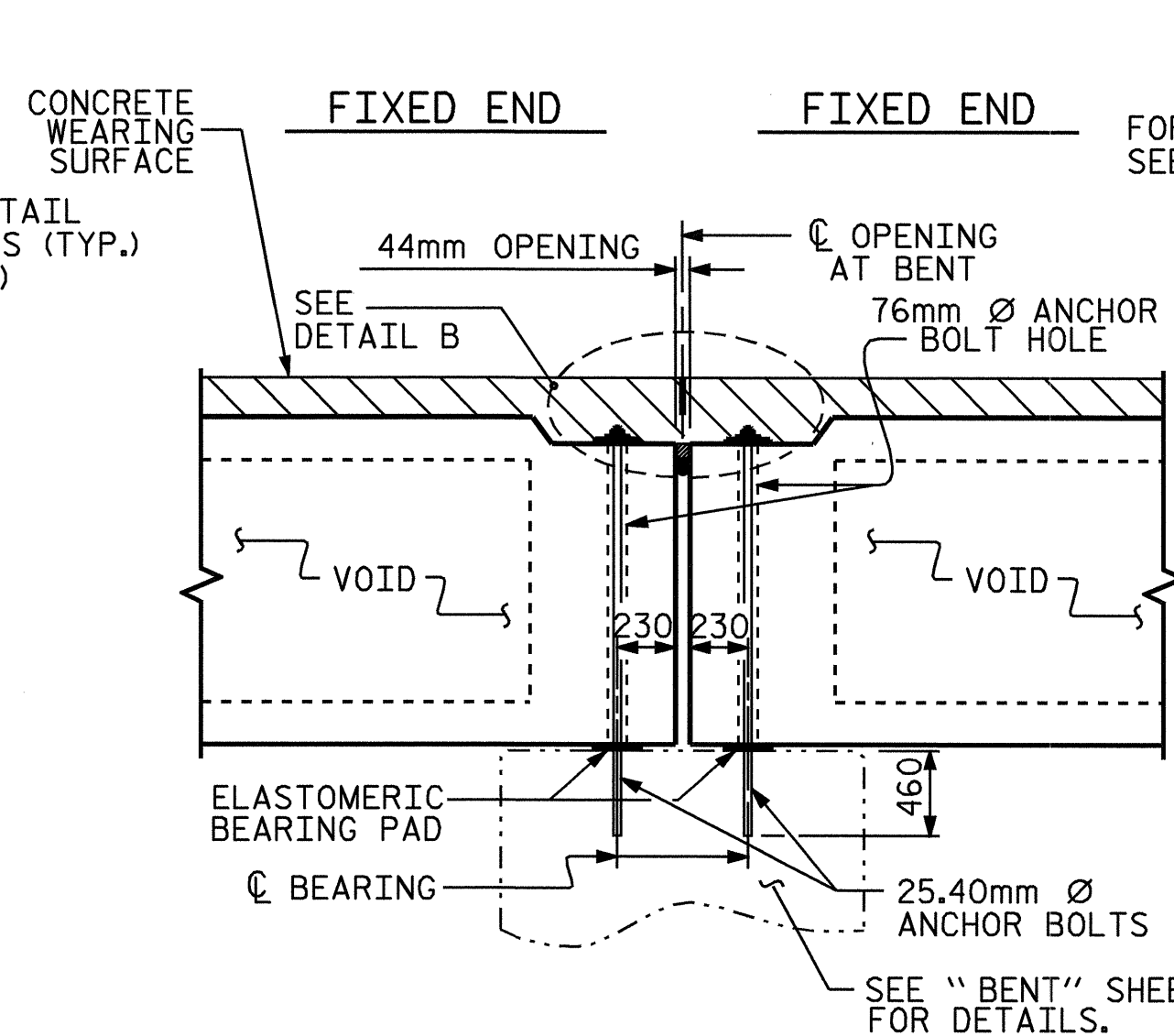
PLATE DETAILS



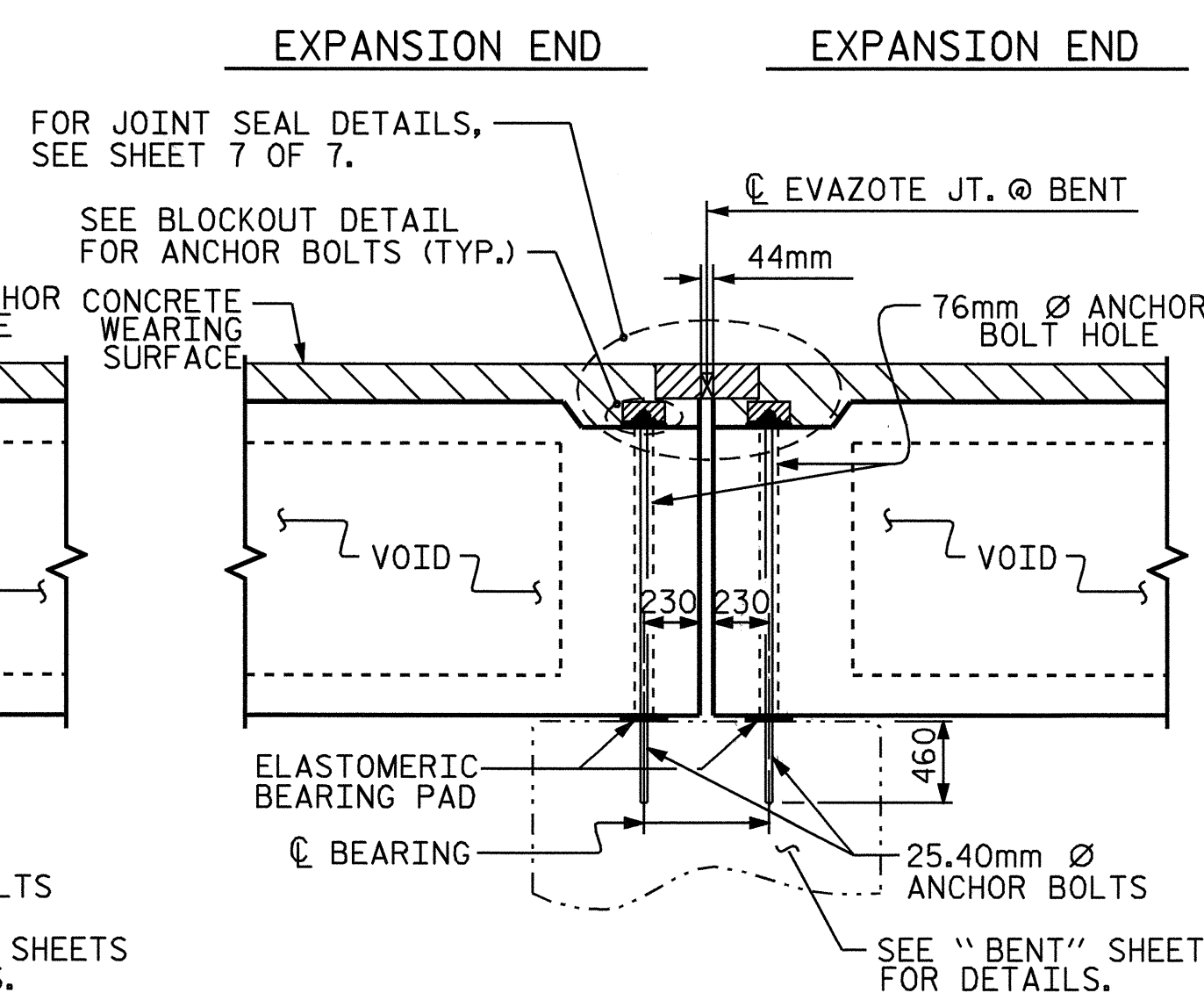
BLOCKOUT DETAIL FOR ANCHOR BOLTS



SECTION AT END BENT
END BENT 1 SHOWN, END BENT 2 SIMILAR



SECTION AT BENTS
BENTS 1, 3, 5, & 7



SECTION AT BENTS
BENTS 2, 4, 6 & 8

NOTES

CONTRACTOR MAY SUBMIT ALTERNATE METHOD OF ISOLATING TIE DOWN SYSTEM FOR BOX BEAMS FOR APPROVAL BY THE ENGINEER.

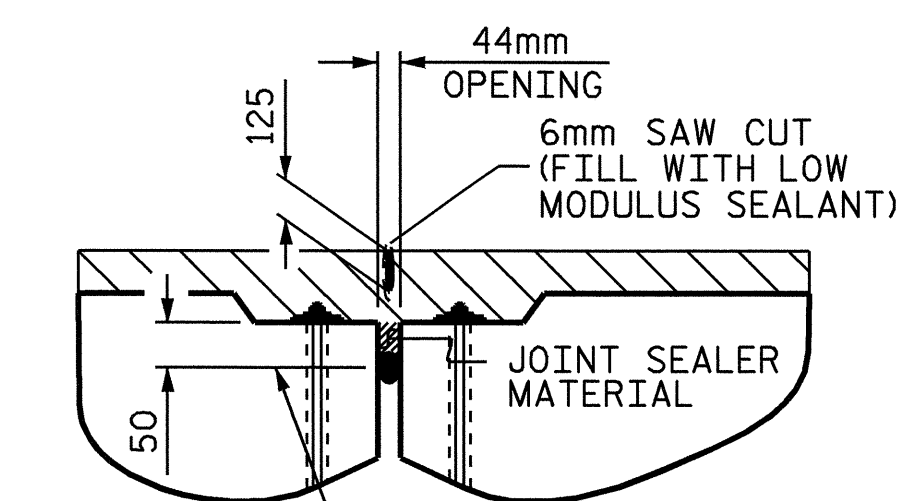
NUTS FOR ANCHOR BOLTS ARE TO BE TIGHTENED FINGER TIGHT AND THEN BACKED OFF 1/2 TURN. THE THREAD OF THE NUT AND SHALL THEN BE BURRED WITH A SHARP POINTED TOOL.

ALL POLYSTYRENE SHALL BE DOW STYROFOAM 60 HIGH-LOAD, UC INDUSTRIES FOAMULAR 600 OR APPROVED EQUAL.

ADHESIVE, AS APPROVED BY THE ENGINEER, SHALL BE APPLIED IN A CONTINUOUS BEAD AND IN SUFFICIENT AMOUNT TO PREVENT THE POLYSTYRENE FROM MOVING WHILE POURING THE CONCRETE WEARING SURFACE.

A LUBRICANT SHALL BE APPLIED BETWEEN PLATES P1 AND P2 AS DIRECTED BY THE ENGINEER. CARE SHALL BE TAKEN TO PREVENT LUBRICANT FROM CONTACT WITH THE TOP SURFACE OF THE BOX BEAMS.

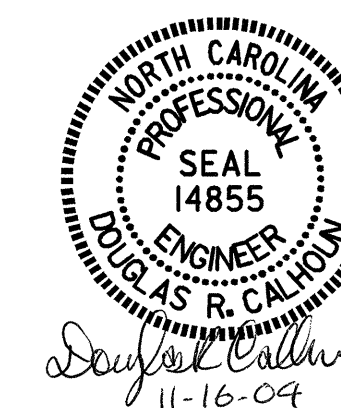
SLIDING PLATES P1 AND P2 SHALL BE SMOOTH AND STRAIGHT.



DETAIL B

PROJECT NO. B-2583
MADISON COUNTY
STATION: 12+21.750 -L-
SHEET 6 of 7

STATE OF NORTH CAROLINA
DEPARTMENT OF TRANSPORTATION
RALEIGH
B-II 914
PRESTRESSED CONCRETE
BOX BEAM
TYPICAL SECTION
DETAILS



DRAWN BY : T. A. HARRIS DATE : 7/28/04
CHECKED BY : K. P. SEDAL DATE : 8/9/04

16-NOV-2004 16:38
W:\squad\b2583\taharris\Microstation\str\b2583.sd.bb.01.dgn
TAHarr1s

REVISIONS						SHEET NO.	
NO.	BY:	DATE:	NO.	BY:	DATE:	S-13	
1			3			TOTAL SHEETS	
2			4			112	