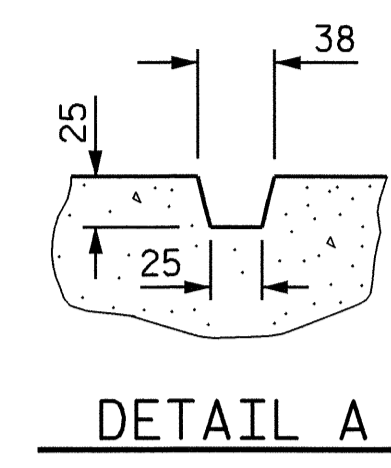


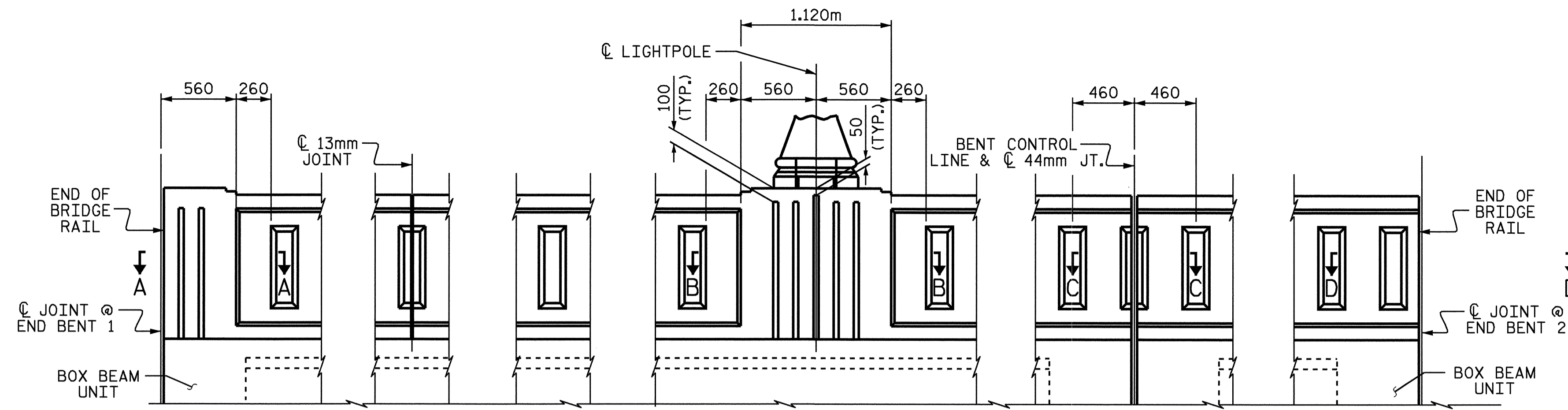
NOTES

FOR ELECTRICAL CONDUIT SYSTEM, SEE ELECTRICAL CONDUIT SYSTEM SHEET.

REINFORCING STEEL IN RAIL MAY BE SHIFTED SLIGHTLY TO CLEAR ELECTRICAL JUNCTION BOX.

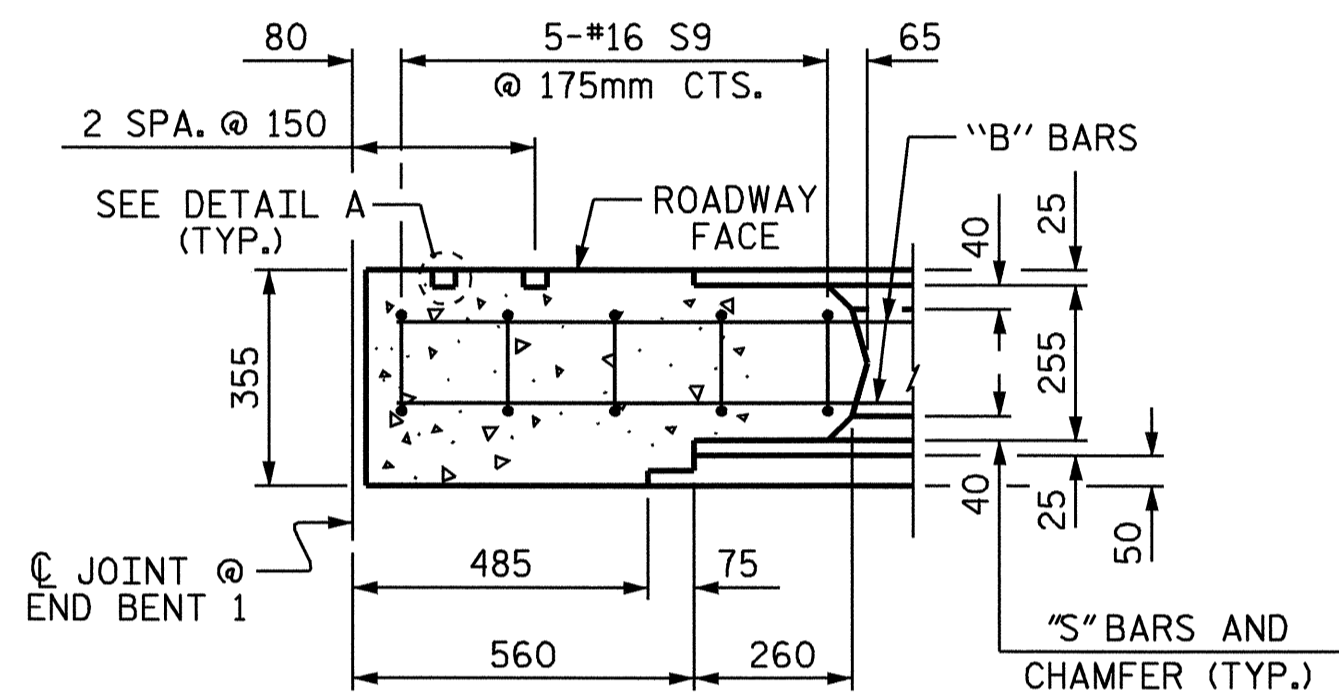


DETAIL A

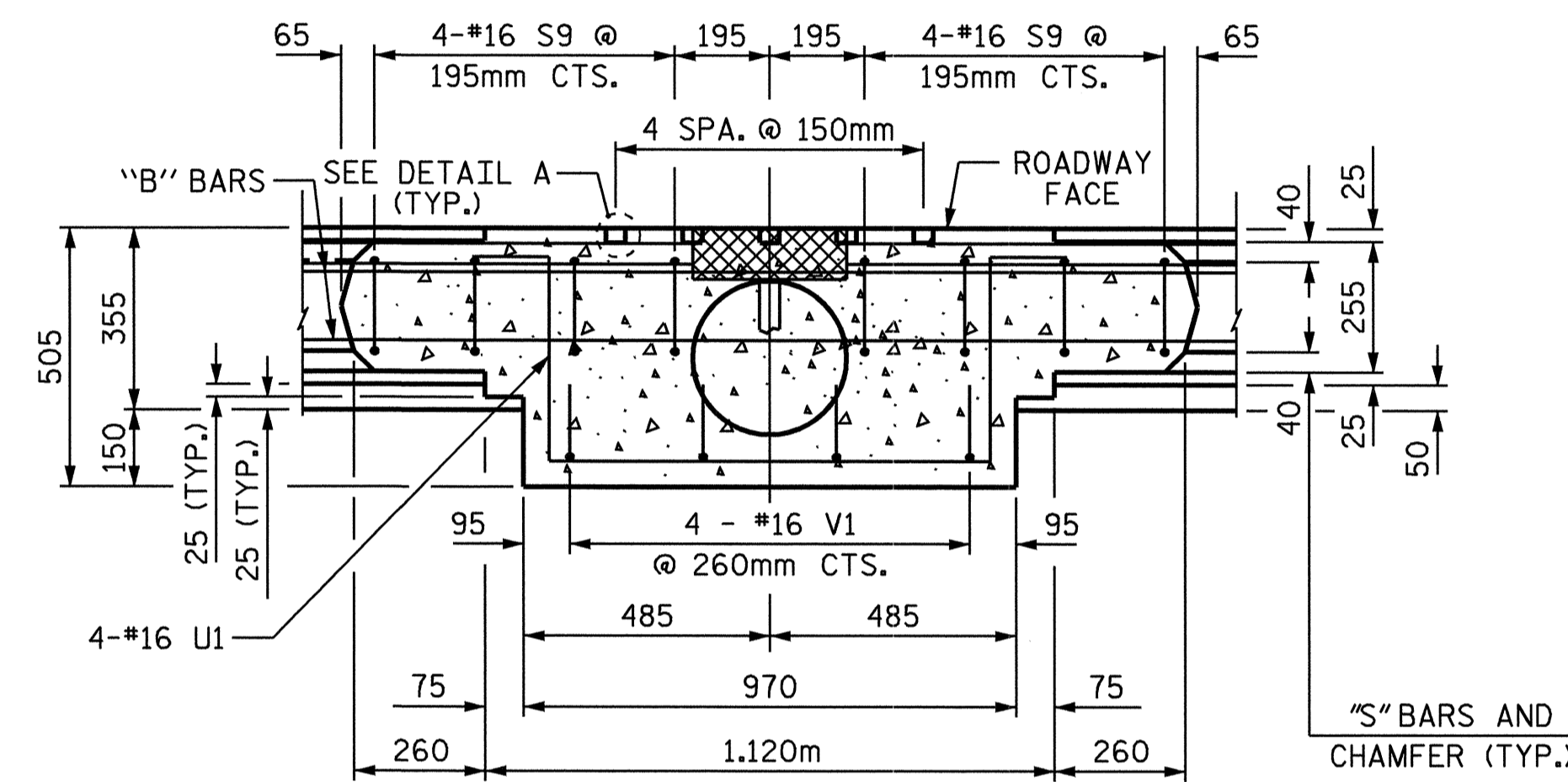


ROADWAY ELEVATION OF RAIL

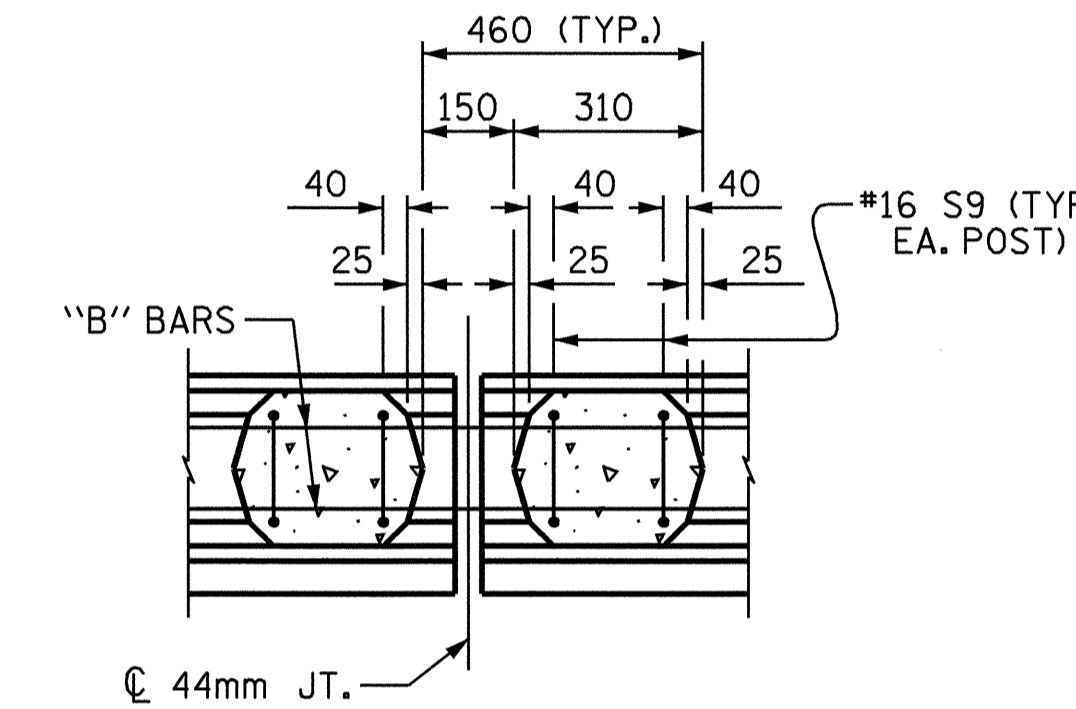
(RIGHT SIDE)



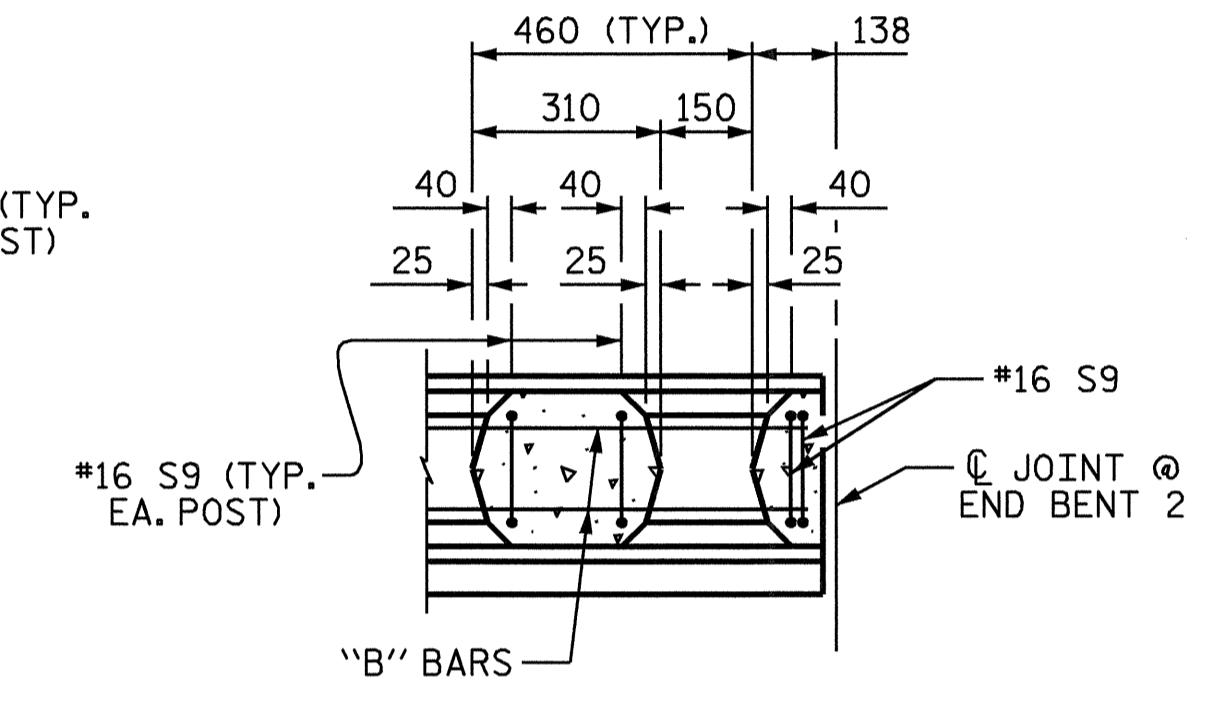
SECTION A-A
(PILASTER @ END BENT 1)



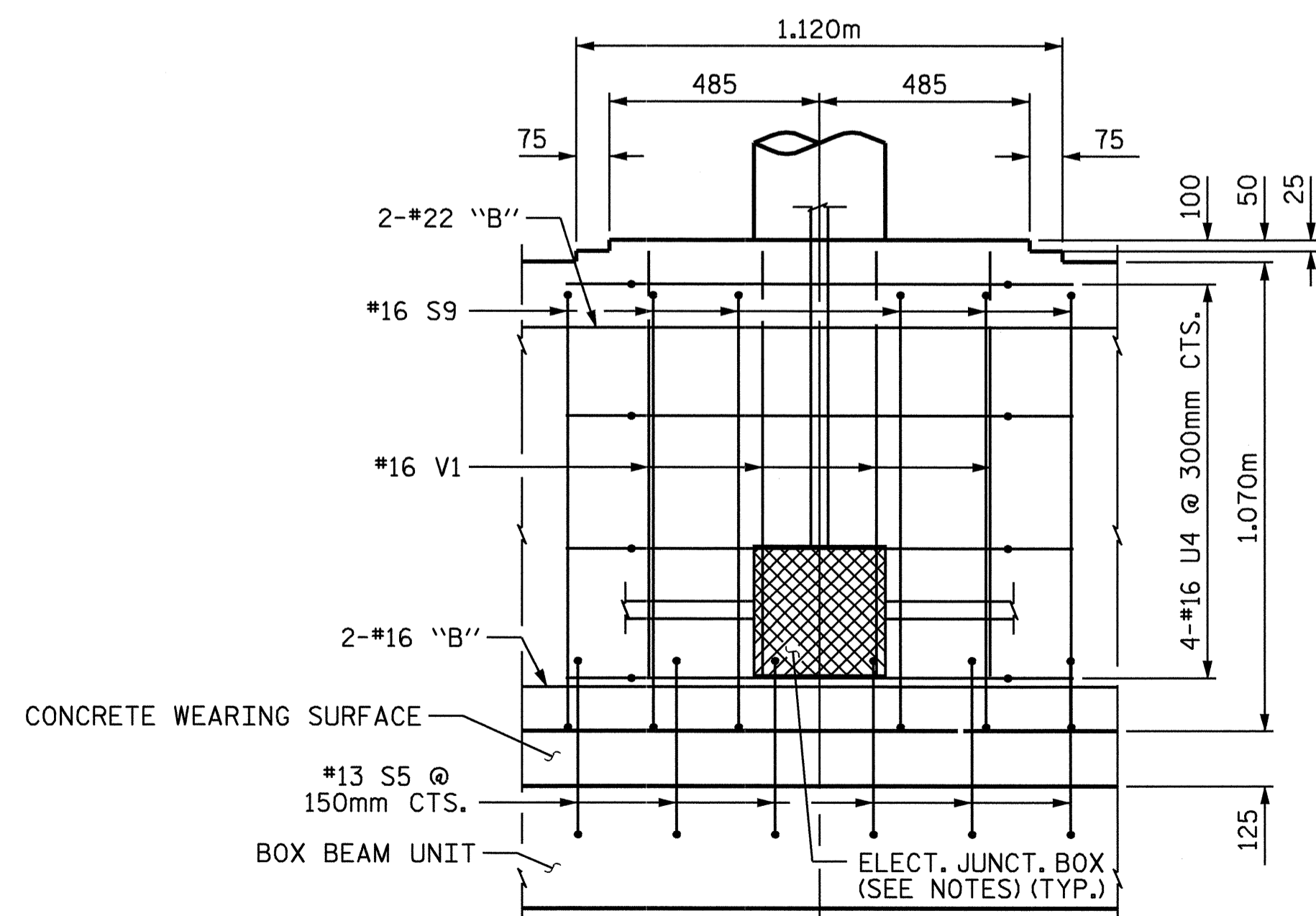
SECTION B-B
(PILASTER @ LIGHTPOLE)



SECTION C-C
(WINDOW OVER JOINT)



SECTION D-D
(JOINT @ END BENT 2)



INTERIOR VIEW

(SHOWING TYPICAL REINFORCING STEEL IN LIGHT POLE PILASTERS)
(CHAMFERS NOT SHOWN FOR CLARITY)

DRAWN BY: T. A. HARRIS DATE: 7/28/04
CHECKED BY: K. P. SEDAI DATE: 8/17/04

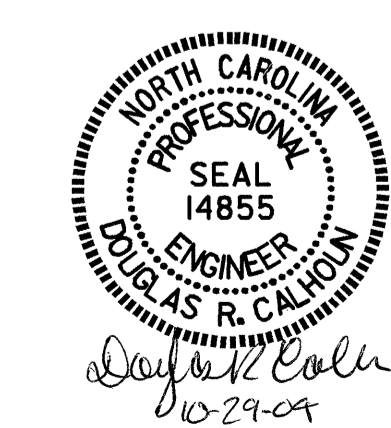
29-OCT-2004 09:47
W:\squad\b2583\taharris\Microstation\str\b2583_sd.bb_01.dgn
TAHarris

PROJECT NO. B-2583
MADISON COUNTY
STATION: 12+21.750 -L-

SHEET 2 OF 13

STATE OF NORTH CAROLINA
DEPARTMENT OF TRANSPORTATION
RALEIGH

**CLASSIC CONCRETE
BRIDGE RAIL
(RIGHT SIDE)**



REVISIONS						SHEET NO. S-27
NO.	BY:	DATE:	NO.	BY:	DATE:	
1			3			TOTAL SHEETS 112
2			4			