

NOTES

STIRRUPS IN THE CAP MAY BE SHIFTED AS NECESSARY TO CLEAR ANCHOR BOLTS.

PIPE DRAINS IN WALL MAY BE SHIFTED SLIGHTLY AS NECESSARY TO CLEAR REINFORCING STEEL.

HOOKS ON "V" BARS MAY BE TURNED AS NECESSARY FOR PLACING REINFORCING STEEL.

ALL STEEL IN THE DRILLED PIERS IS INCLUDED IN THE PAY ITEMS FOR "REINFORCING STEEL" AND "SPIRAL COLUMN REINFORCING STEEL".

THE CONTRACTOR'S ATTENTION IS CALLED TO THE FACT THAT THE LONGITUDINAL REINFORCEMENT FOR THE DRILLED PIERS IS DETAILED WITH 1 METER OF EXTRA LENGTH.

SPLICING OF THE LONGITUDINAL BARS IN THE DRILLED PIERS WILL NOT BE PERMITTED.

THE LATERAL GUIDES AT EACH END OF THE CAP ARE NOT TO BE POURED UNTIL AFTER BOX GIRDER UNITS ARE IN PLACE.

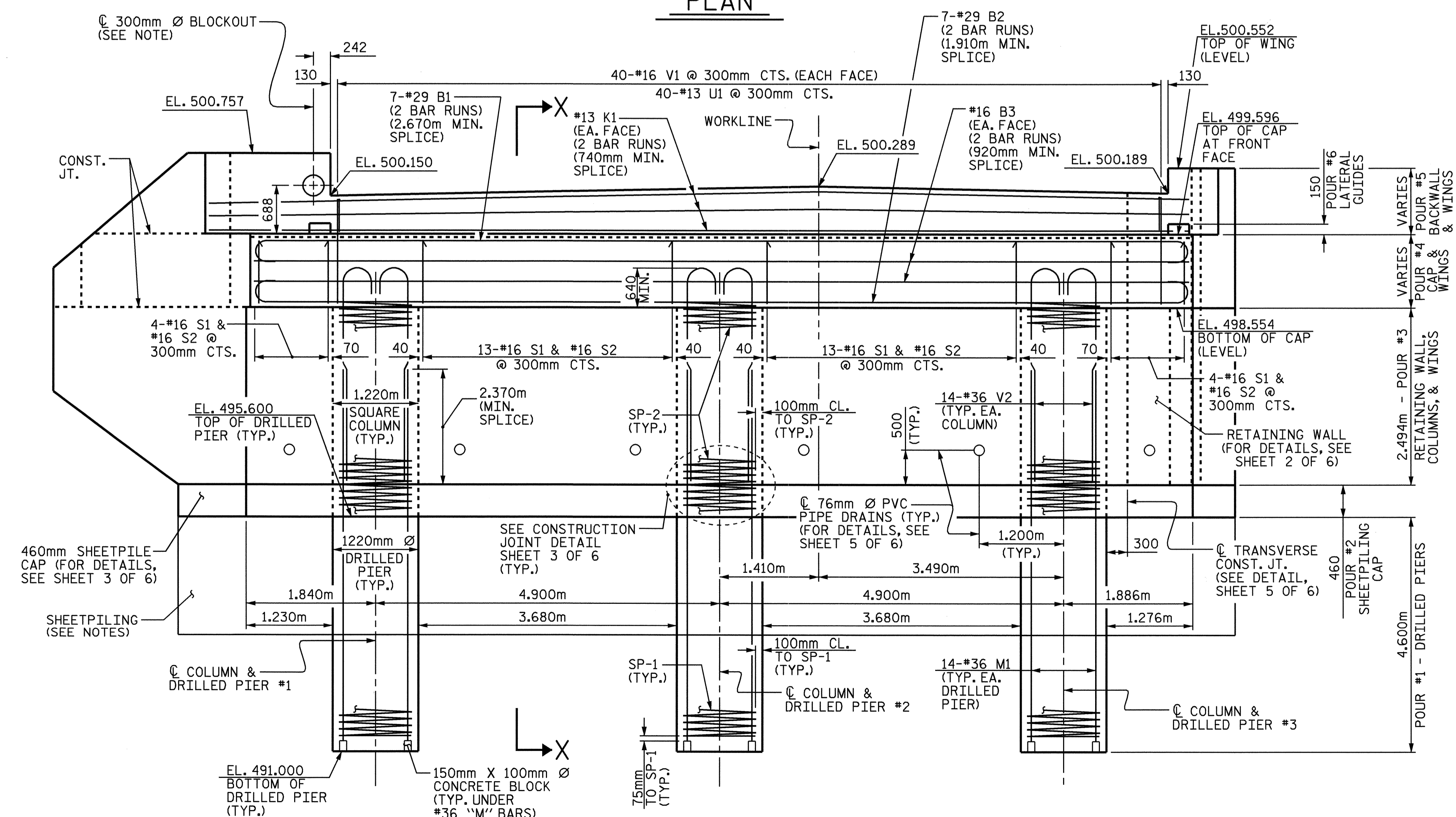
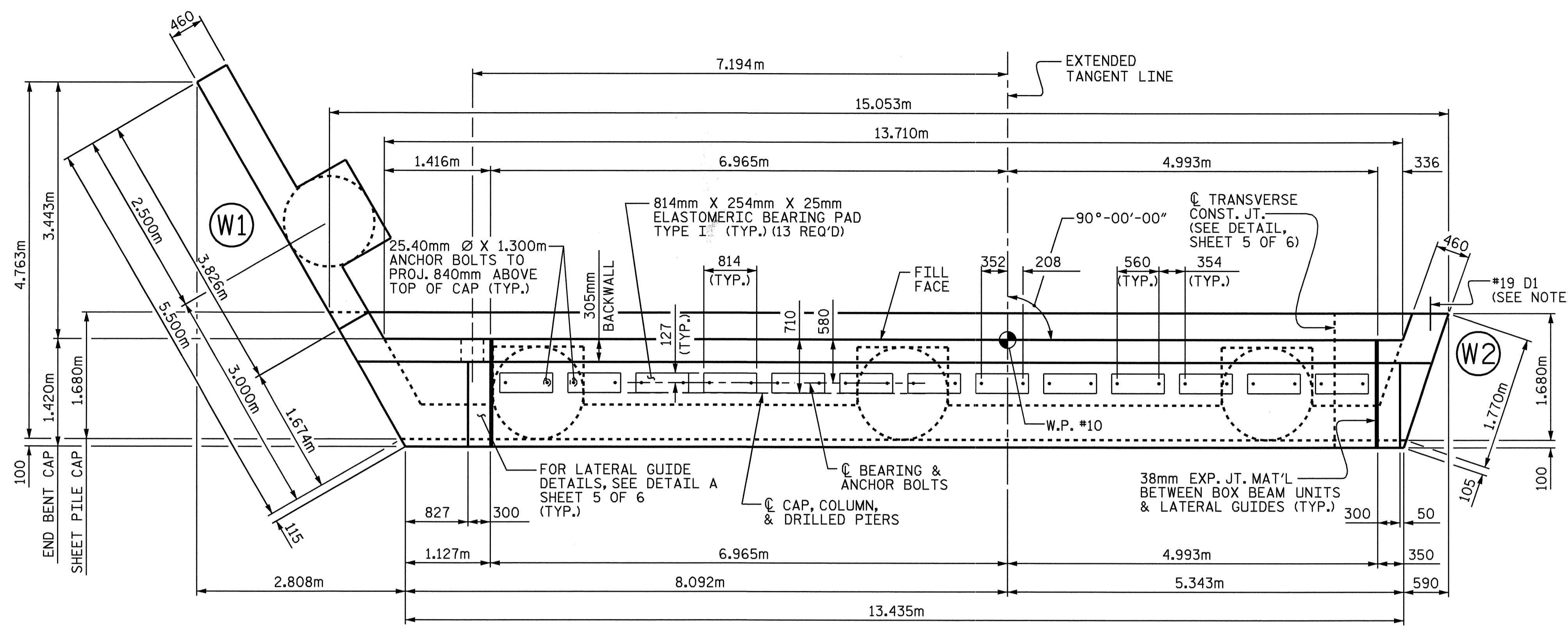
STEEL SHEETPIILING SHALL BE DRIVEN TO ROCKLINE AND EMBEDDED 300mm INTO SHEET PILE CAP.

THE STEEL SHEETPILES SHALL BE HOT ROLLED, HAVE A MINIMUM THICKNESS OF 10 MILLIMETER, AND A MINIMUM SECTION MODULUS OF 0.0016 CUBIC METERS PER LINEAR METER OF WALL.

THE CONTRACTOR SHALL PROVIDE FOR THE INSTALLATION OF THE 300mm Ø BLOCKOUT. STEEL IN THE WINGWALL MAY BE SHIFTED OR CUT AS NECESSARY TO PROVIDE FOR THE INSTALLATION OF THE BLOCKOUT. SEE UTILITY SHEETS FOR DETAILS.

#19 D1 IN WING 2 SHALL BE DRILLED AND GROUTED INTO EXISTING ABUTMENT.

THE CONTRACTOR SHALL PROVIDE FOR INSTALLATION OF THE 102mm Ø DRAIN PIPE THROUGH THE WING WALL AS REQUIRED FOR REINFORCED BRIDGE APPROACH FILLS, SEE THE ROADWAY PLANS. REINFORCING STEEL IN THE WING WALL MAY BE SHIFTED AS NECESSARY TO CLEAR THE DRAIN PIPE.



DRAWN BY : K. McCAULEY DATE : 7/1/04
 CHECKED BY : K. P. SEDAI DATE : 7/18/04

04-NOV-2004 15:32
 W:\squad\B2583\kccauley\Microstation\B2583.ed.E*.02.dgn
 TAharr1s

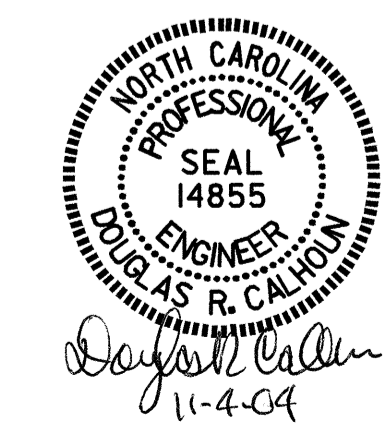
COLUMN & DRILLED PIER IN WING 1 NOT SHOWN FOR CLARITY

PROJECT NO. B-2583
MADISON COUNTY
 STATION: 12+21.750 -L-

SHEET 1 OF 6

STATE OF NORTH CAROLINA
 DEPARTMENT OF TRANSPORTATION
 RALEIGH

**SUBSTRUCTURE
 END BENT 2**



REVISIONS						SHEET NO. S-46
NO.	BY:	DATE:	NO.	BY:	DATE:	
1			3			TOTAL SHEETS 112
2			4			