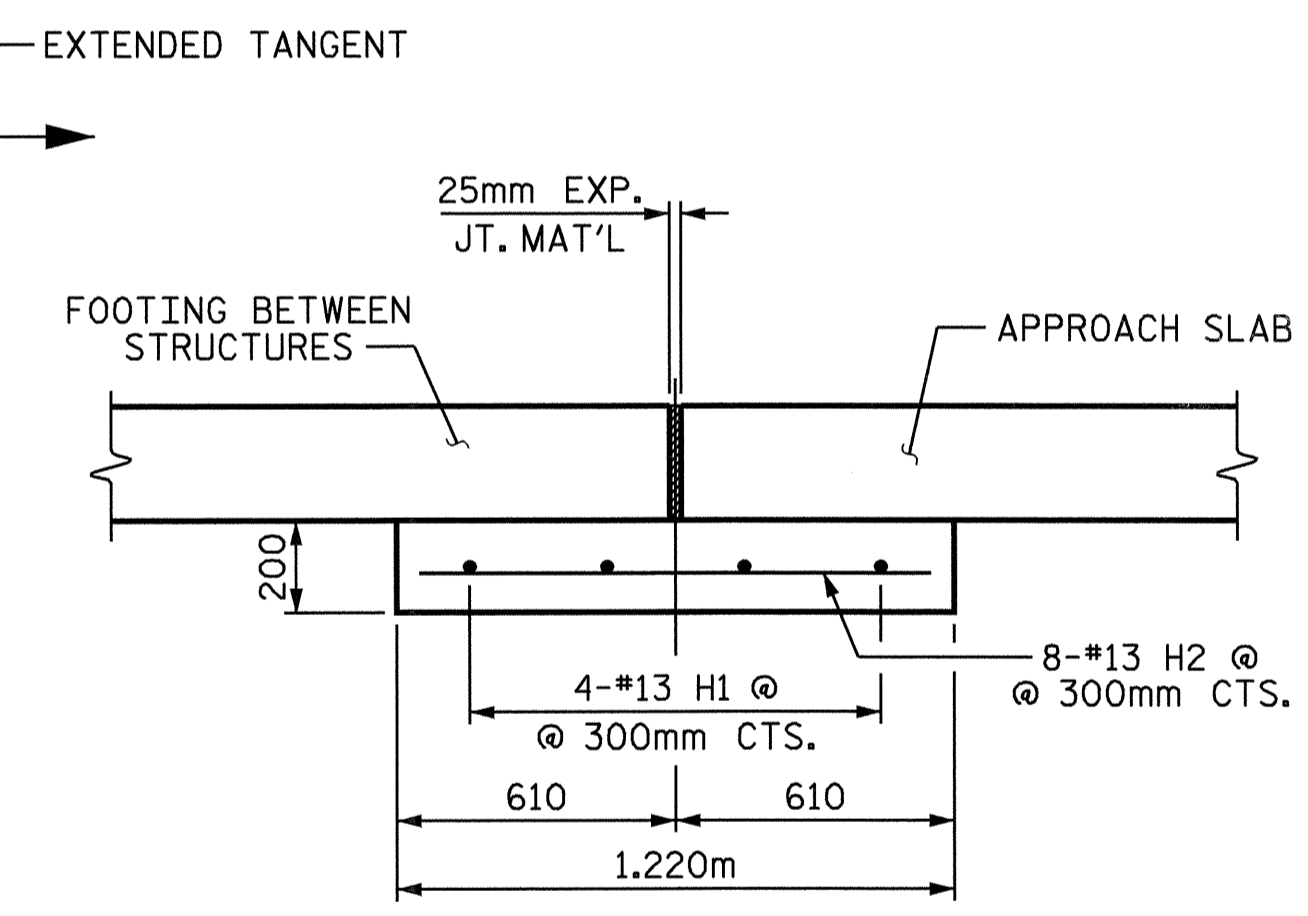


**NOTES**  
 FOR CLASSIC CONCRETE BRIDGE RAIL REINFORCING STEEL AND DETAILS, SEE "CLASSIC CONCRETE BRIDGE RAIL" SHEETS.  
 FOR FOOTINGS BETWEEN STRUCTURES, SEE SHEET 5 OF 14.  
 FOR CLASSIC CONCRETE BRIDGE RAIL AND SIDEWALK SECTIONS, SEE SHEET 10 OF 14.

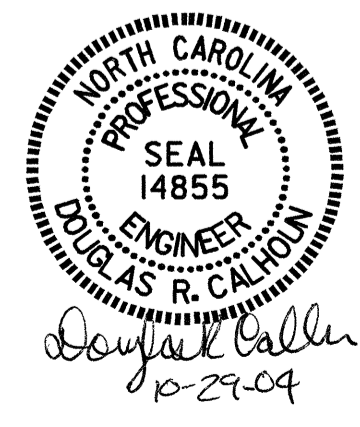
NOTE: REINFORCING STEEL SHALL BE FIELD CUT TO MAINTAIN A 50mm MINIMUM CLEARANCE TO THE DROP INLET. SEE ROADWAY PLANS.



**DETAIL A**

PROJECT NO. B-2583  
MADISON COUNTY  
 STATION: 12+21.750 -L-

SHEET 3 of 14



STATE OF NORTH CAROLINA  
 DEPARTMENT OF TRANSPORTATION  
 RALEIGH  
 BRIDGE APPROACH SLAB  
 FOR FLEXIBLE PAVEMENT  
 WITH CLASSIC CONCRETE  
 BRIDGE RAIL

REVISIONS						SHEET NO.	
NO.	BY:	DATE:	NO.	BY:	DATE:	S-57	
1			3			TOTAL SHEETS	
2			4			112	

DRAWN BY : T. A. HARRIS DATE : 8/24/04  
 CHECKED BY : K. P. SEDA DATE : 8/30/04

**PLAN**

STR #1