

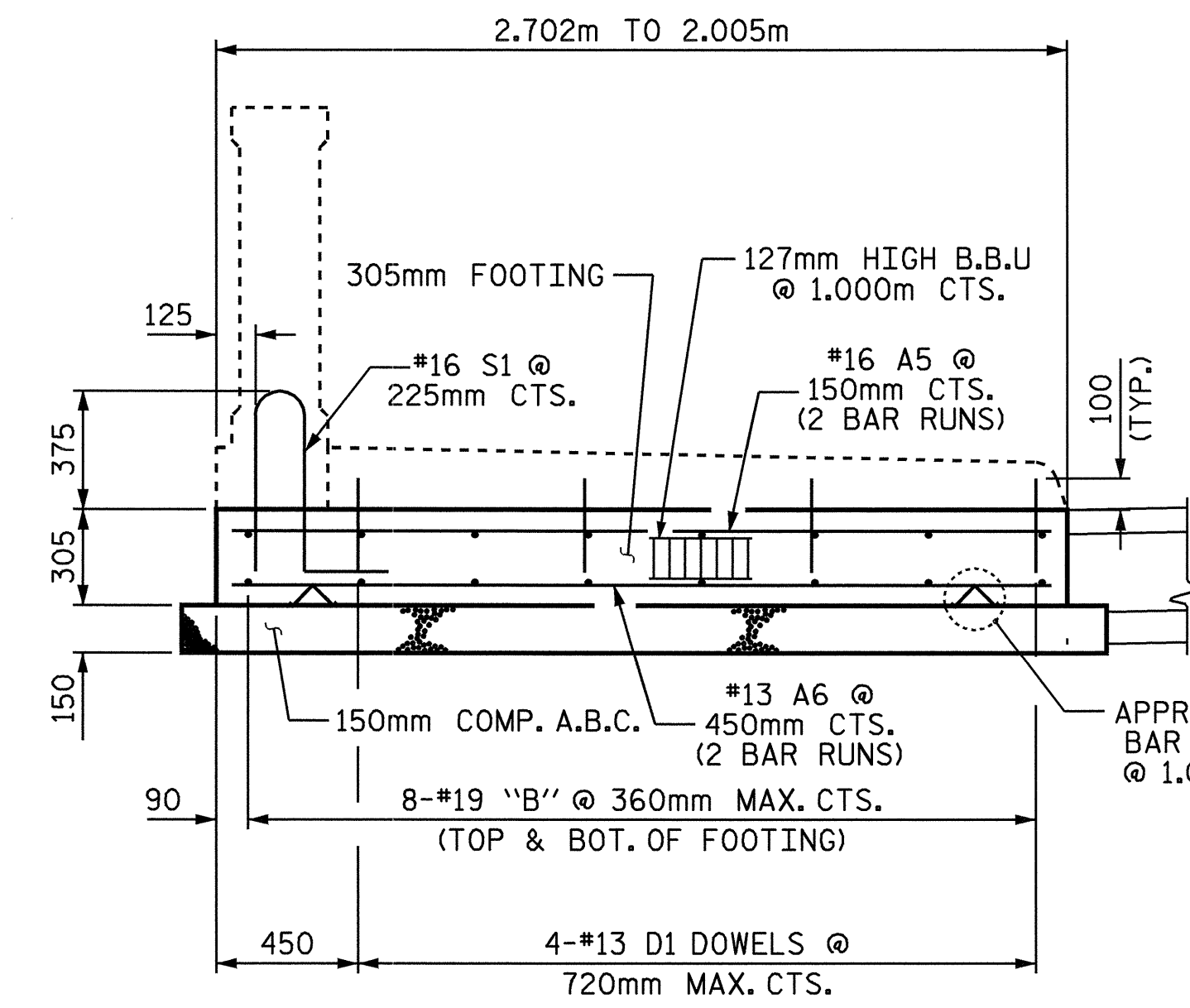
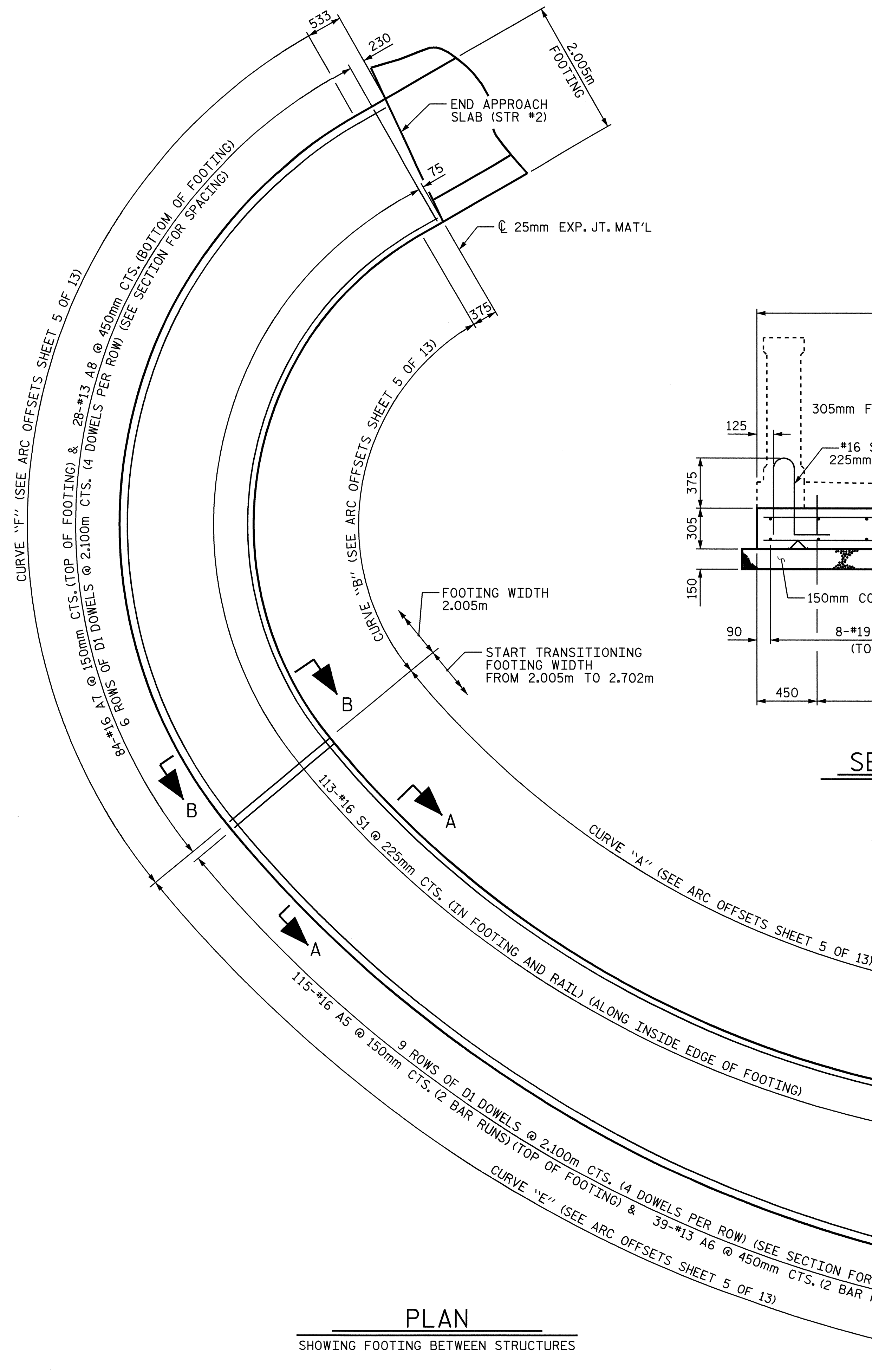
NOTES

FOR ARC OFFSETS, SEE SHEET 6 OF 14.

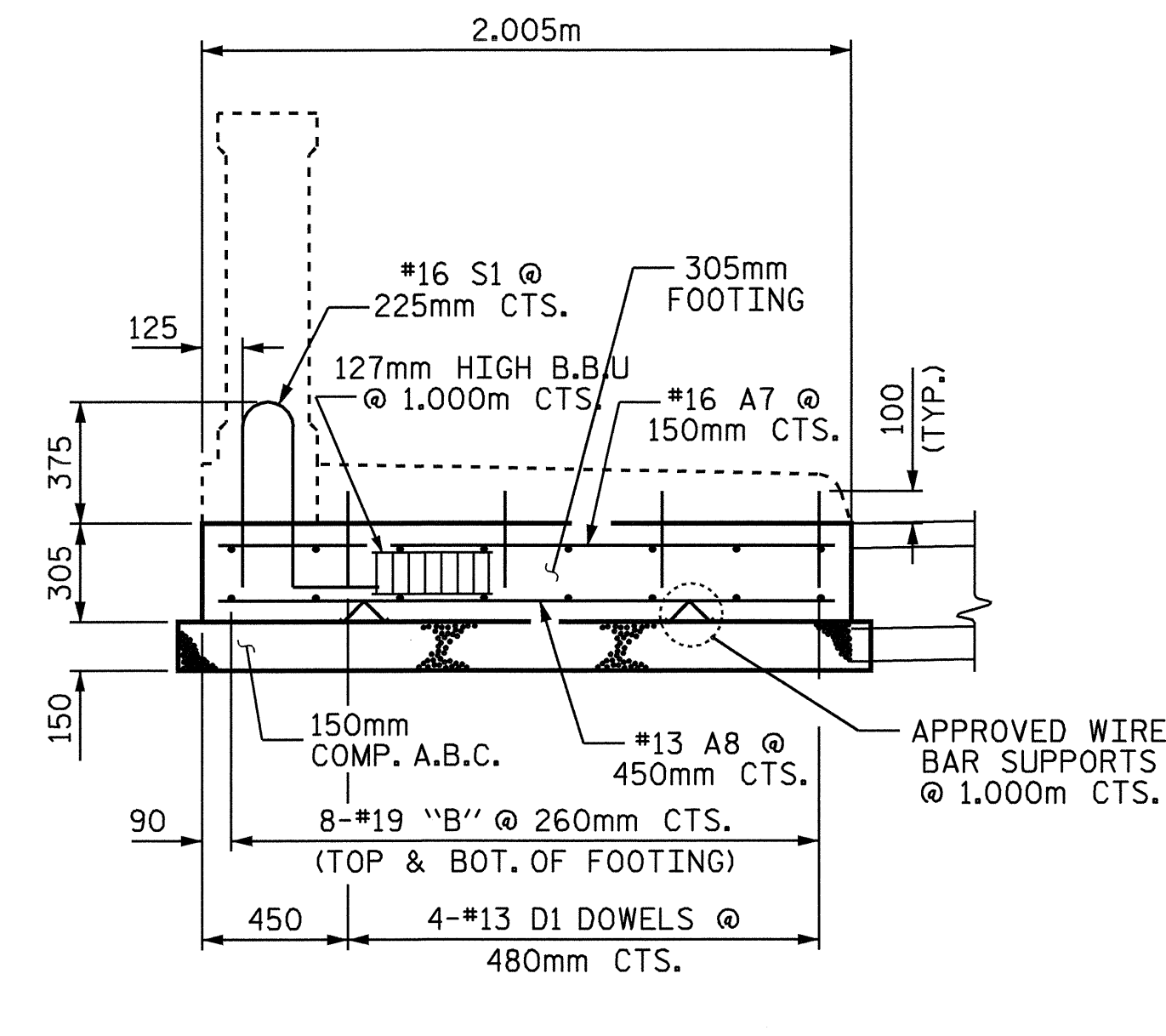
THE "A" BARS MAY BE SHIFTED SLIGHTLY IN ORDER TO MAINTAIN 50mm CLEARANCE TO 13mm EXPANSION JOINT MATERIAL IN SIDEWALK.

THE 150mm COMP. A.B.C. SHALL EXTEND 600mm OUTSIDE OF EACH EDGE OF FOOTING AND WILL BE PAID FOR UNDER THE LUMP SUM PRICE FOR CLASSIC CONCRETE RAIL, SIDEWALK AND FOOTING BETWEEN STRUCTURES.

"B" BARS IN FOOTING MAY BE FIELD BENT AS NECESSARY.



SECTION A-A



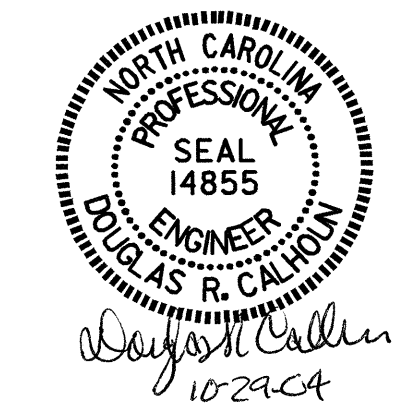
SECTION B-B

PLAN
SHOWING FOOTING BETWEEN STRUCTURES

PROJECT NO. B-2583
MADISON COUNTY
 STATION: 12+21.750 -L-
 SHEET 5 of 14

STATE OF NORTH CAROLINA
 DEPARTMENT OF TRANSPORTATION
 RALEIGH

FOOTING BETWEEN STRUCTURES



REVISIONS						SHEET NO.	
NO.	BY:	DATE:	NO.	BY:	DATE:	S-59	
1			3			TOTAL SHEETS	112
2			4				

DRAWN BY : T. A. HARRIS DATE : 8/24/04
 CHECKED BY : K. P. SEDAI DATE : 9/1/04