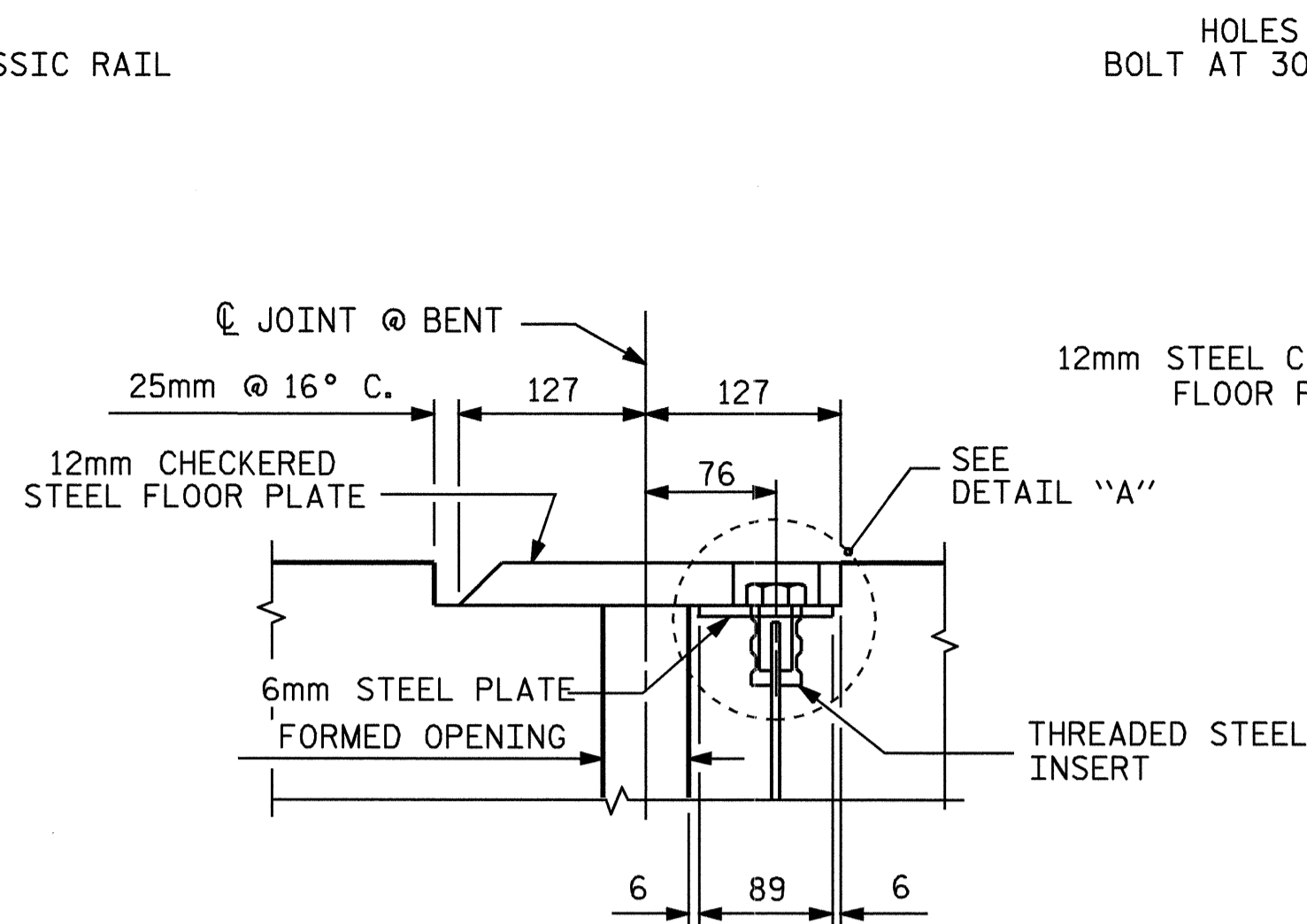
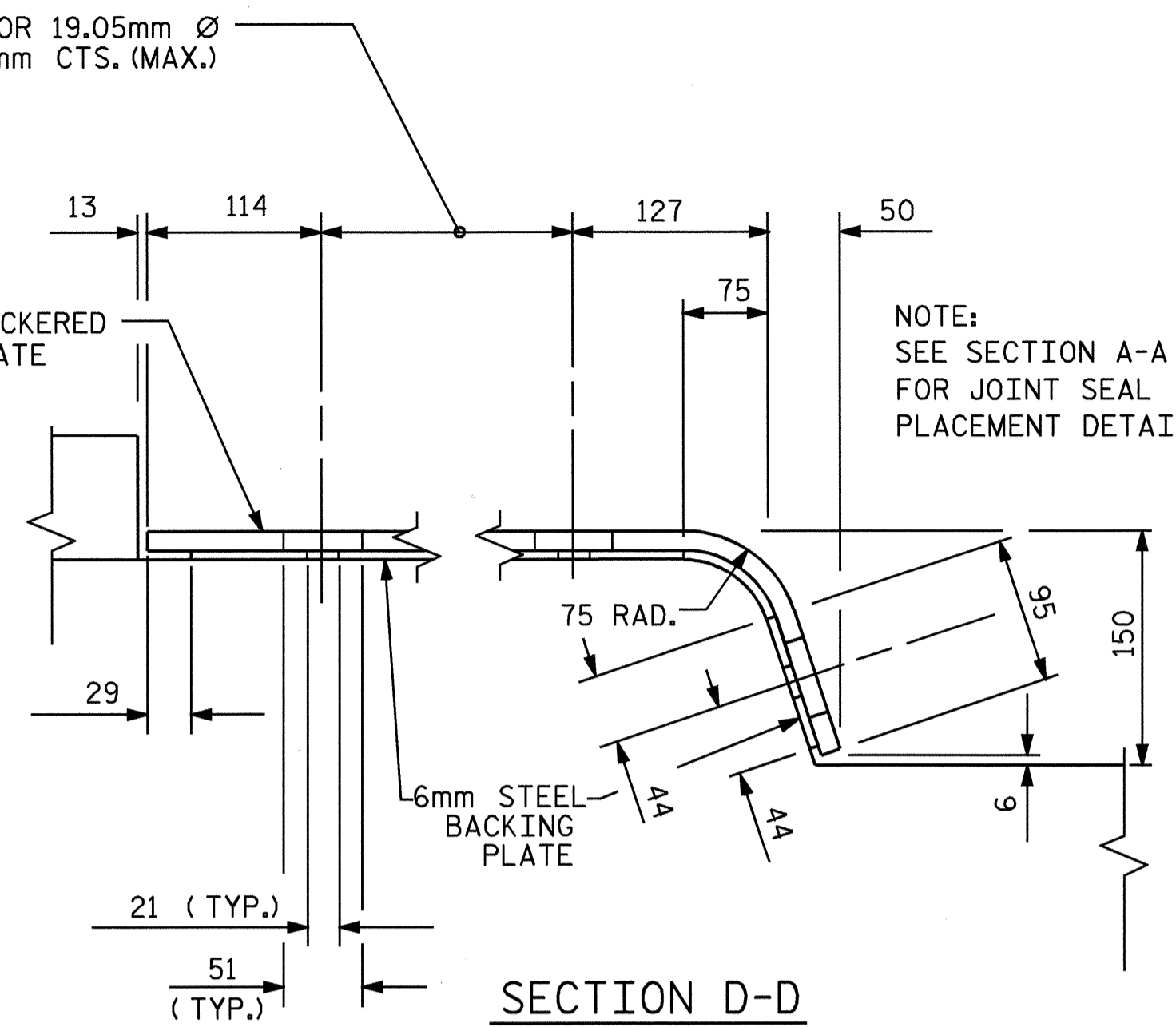


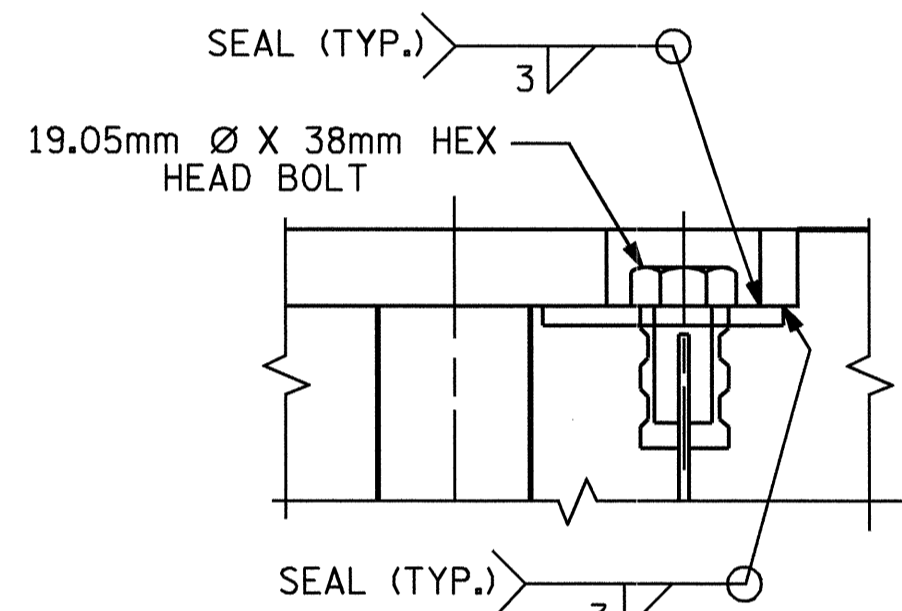
PLAN OF EVAZOTE JOINT SEAL WITH COVER PLATE



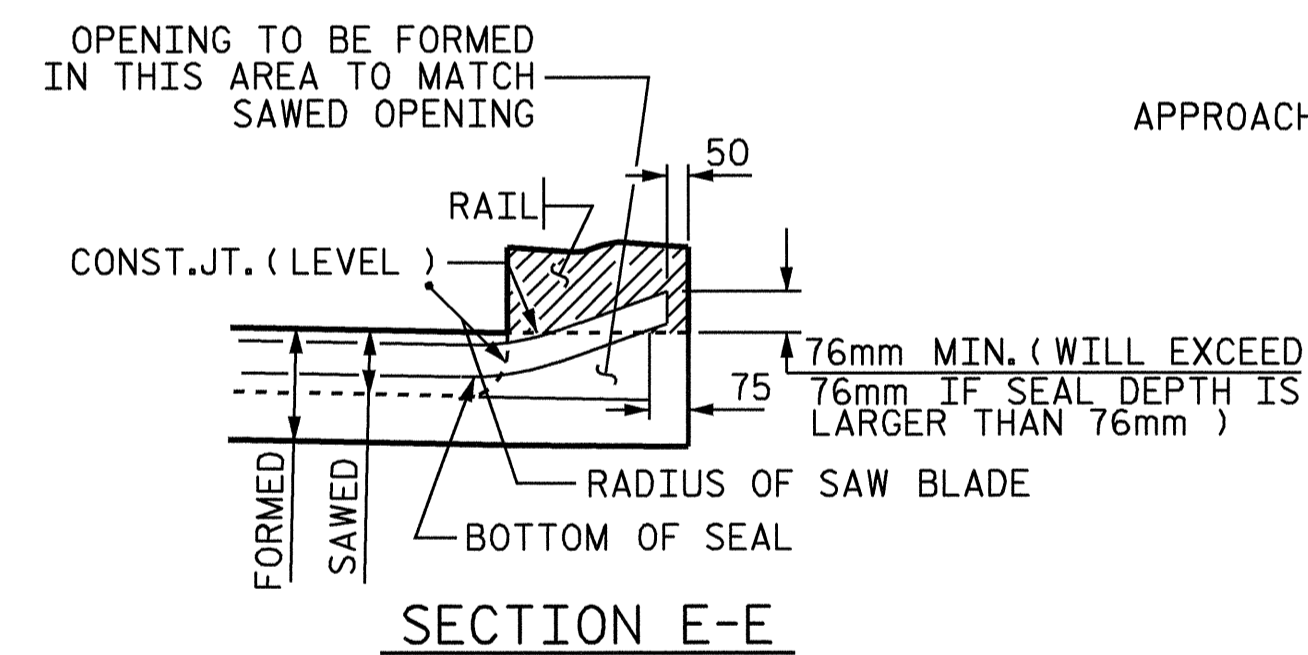
DETAIL "A"



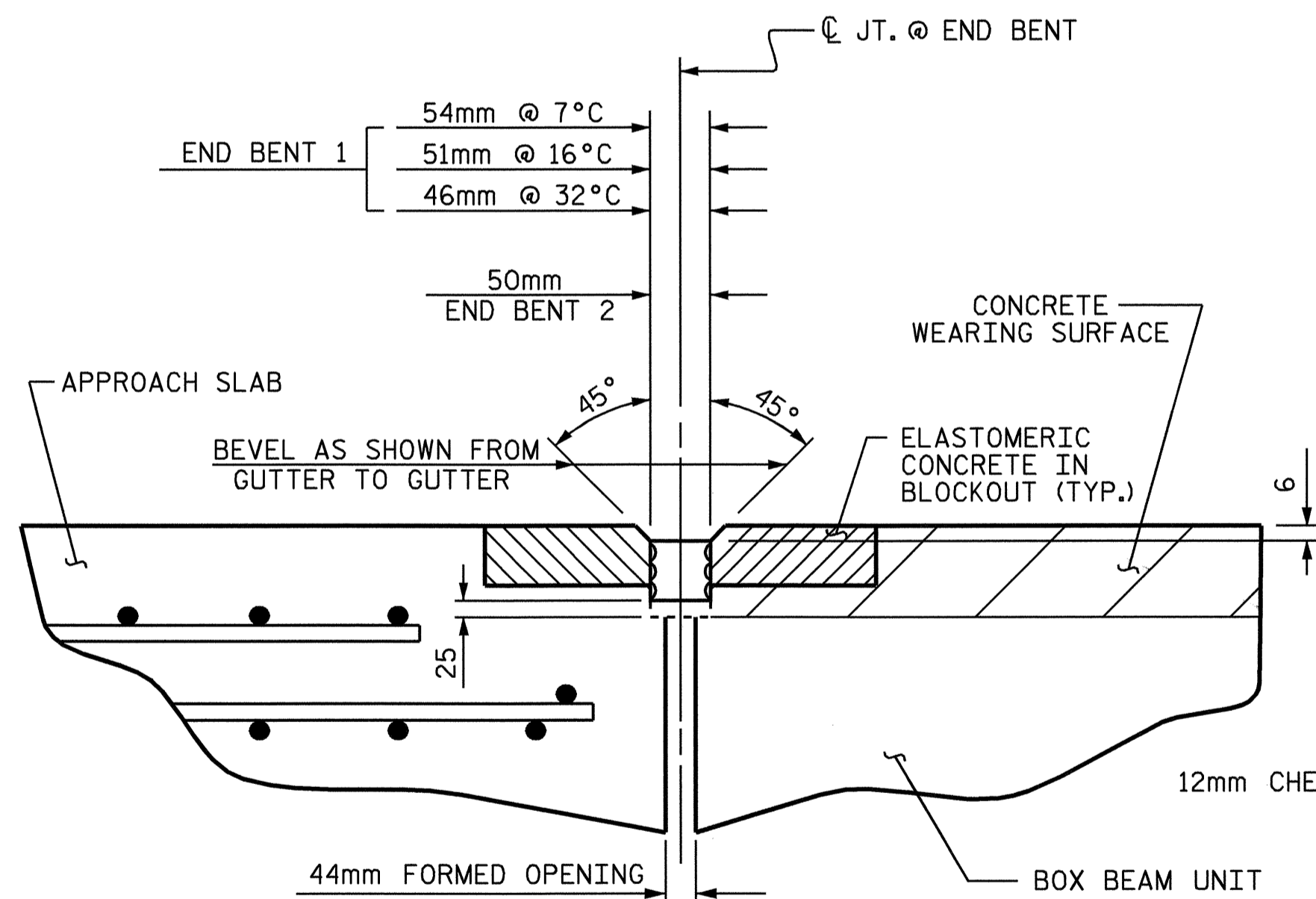
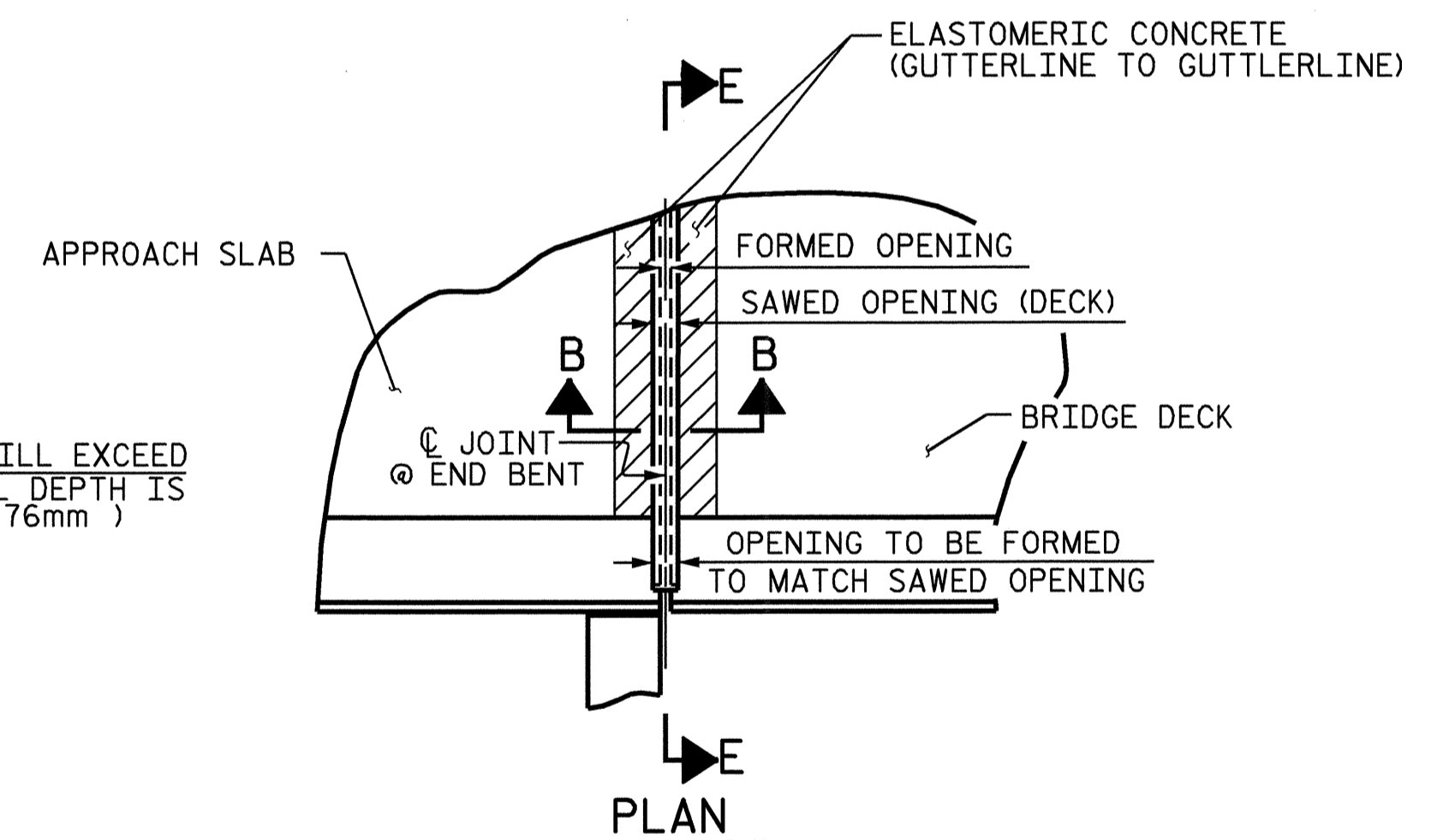
SIDEWALK WITH EVAZOTE JOINT SEAL



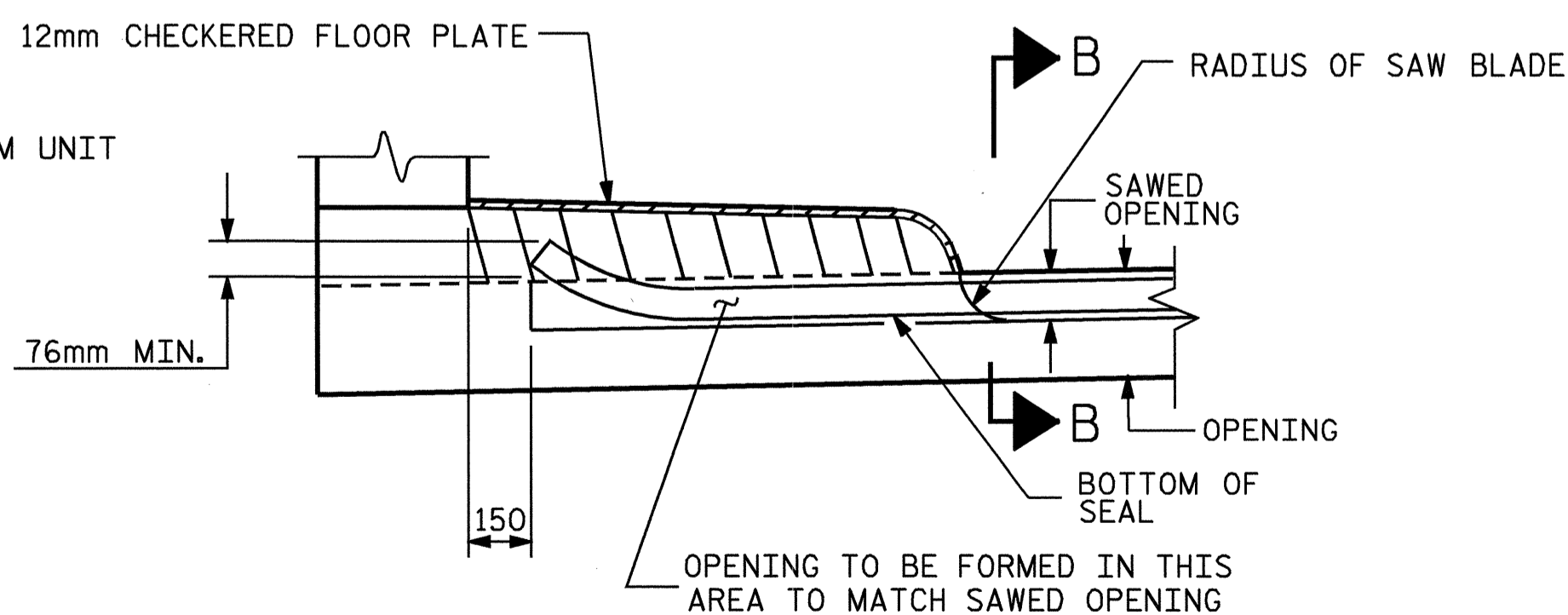
SIDEWALK COVER PLATE DETAILS FOR EVAZOTE JOINT SEALS



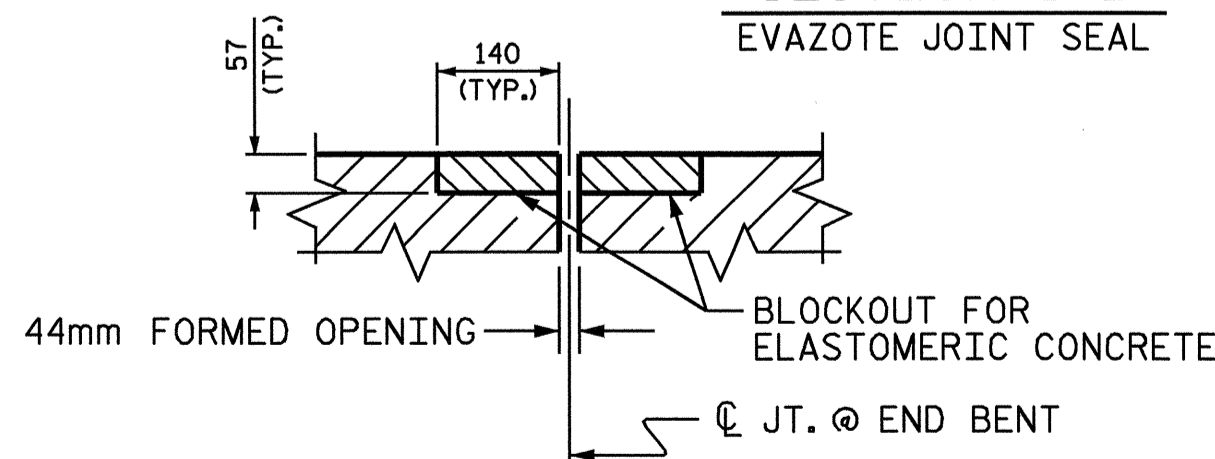
JOINT SEAL DETAILS @ END BENT (FOR CLASSIC CONCRETE BRIDGE RAIL)



SECTION B-B EVAZOTE JOINT SEAL



SIDEWALK WITH EVAZOTE JOINT SEAL



SECTION B-B EVAZOTE JOINT SEAL (PRE-SAWED ELASTOMERIC CONCRETE DIMENSIONS)

NOTES

THE STEEL PLATES SHALL CONFORM TO AASHTO M270 GRADE 250 OR APPROVED EQUAL. AFTER FABRICATION, THE PLATES SHALL BE COMMERCIALY BLAST CLEANED AND COATED WITH A MINIMUM THICKNESS OF 0.100mm DRY OF ZINC-RICH PAINT IN ACCORDANCE WITH THE STANDARD SPECIFICATIONS. AT THE CONTRACTORS OPTION, THESE SURFACES MAY BE METALLIZED TO A MINIMUM THICKNESS OF 0.150mm MILS. SEE SPECIAL PROVISIONS FOR THERMAL SPRAYED COATINGS (METALLIZATION). THE 19.05mm DIAMETER HEX HEAD BOLTS SHALL CONFORM TO ASTM F593 ALLOY 304 STAINLESS STEEL.

THE 19.05mm CONCRETE INSERTS SHALL BE CLOSED-END FERRULES WITH LOOPED WIRE STRUTS ATTACHED TO THEM. THE INSERTS SHALL CONFORM TO AASHTO M169, GRADE 12L14 AND SHALL HAVE A TENSILE WORKING LOAD CAPACITY OF 13.3 kN.

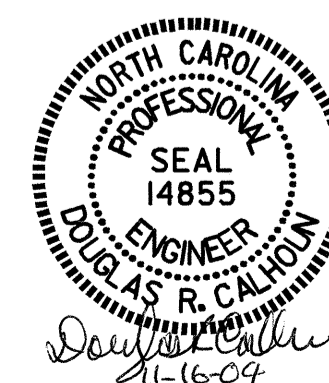
NO SEPARATE PAYMENT WILL BE MADE FOR FURNISHING AND INSTALLING THE COVER PLATE. THE ENTIRE COST OF THIS WORK SHALL BE INCLUDED IN THE LUMP SUM PRICE FOR "EVAZOTE JOINT SEALS."

PROJECT NO. B-2583  
 MADISON COUNTY  
 STATION: 12+21.750 -L-

SHEET 13 of 14

STATE OF NORTH CAROLINA  
 DEPARTMENT OF TRANSPORTATION  
 RALEIGH

STANDARD  
 BRIDGE APPROACH  
 SLAB DETAILS



REVISIONS						SHEET NO. S-67
NO.	BY:	DATE:	NO.	BY:	DATE:	
1			3			TOTAL SHEETS 112
2			4			

ASSEMBLED BY : T.A. HARRIS	DATE : 8/24/04
CHECKED BY : K.P. SEDAI	DATE : 8/27/04
DRAWN BY : FCJ 11/88	REV. 8/16/99 RAL/LES
CHECKED BY : ARB 11/88	REV. 10/17/00 RWW/LES
	REV. 5/7/03 RWW/JTE