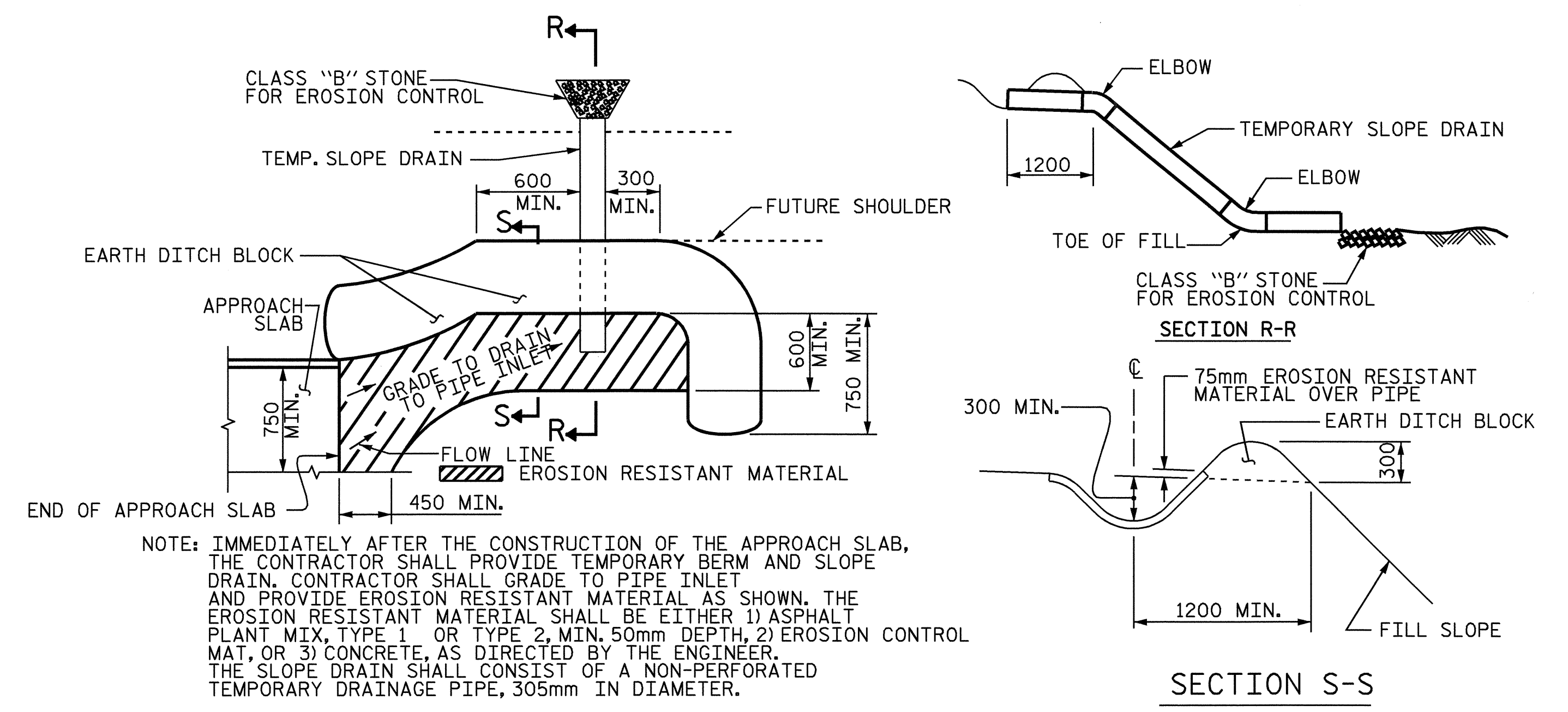
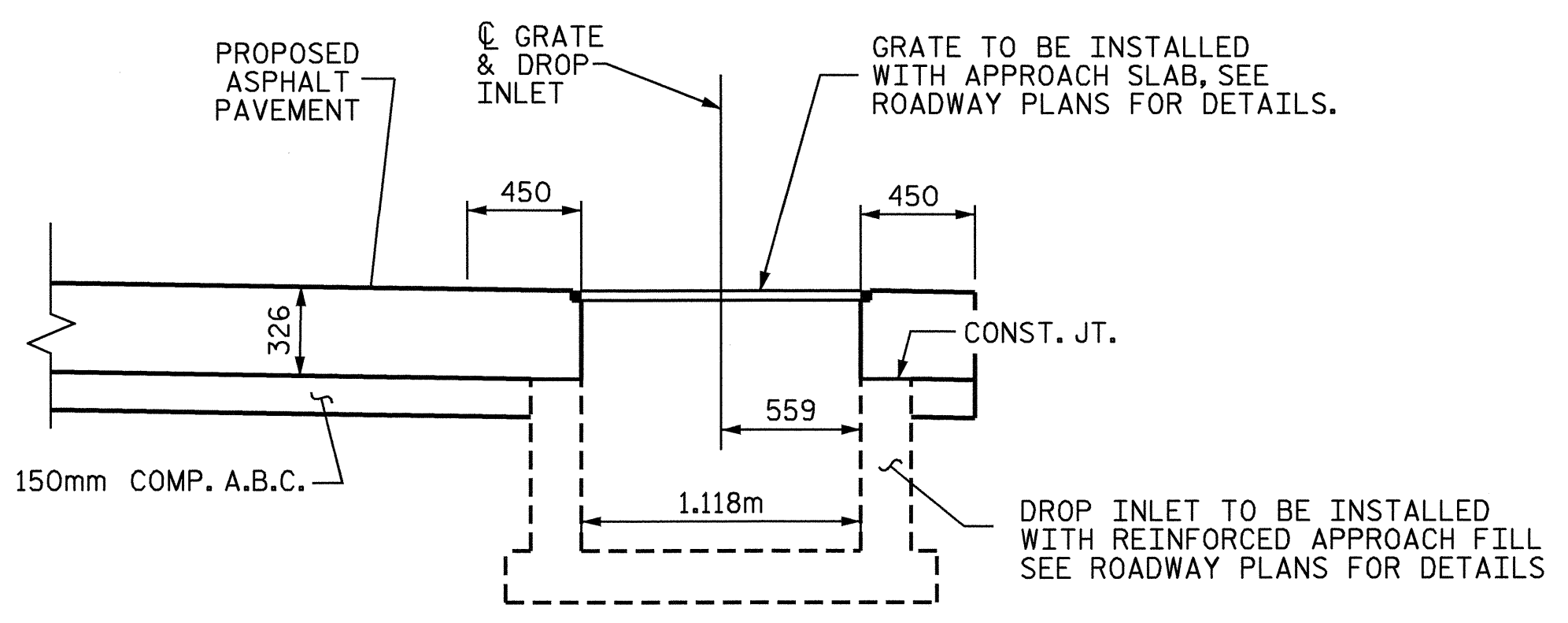


TYPICAL PART PLAN
LEFT SIDE SHOWN, RIGHT SIDE SIMILAR

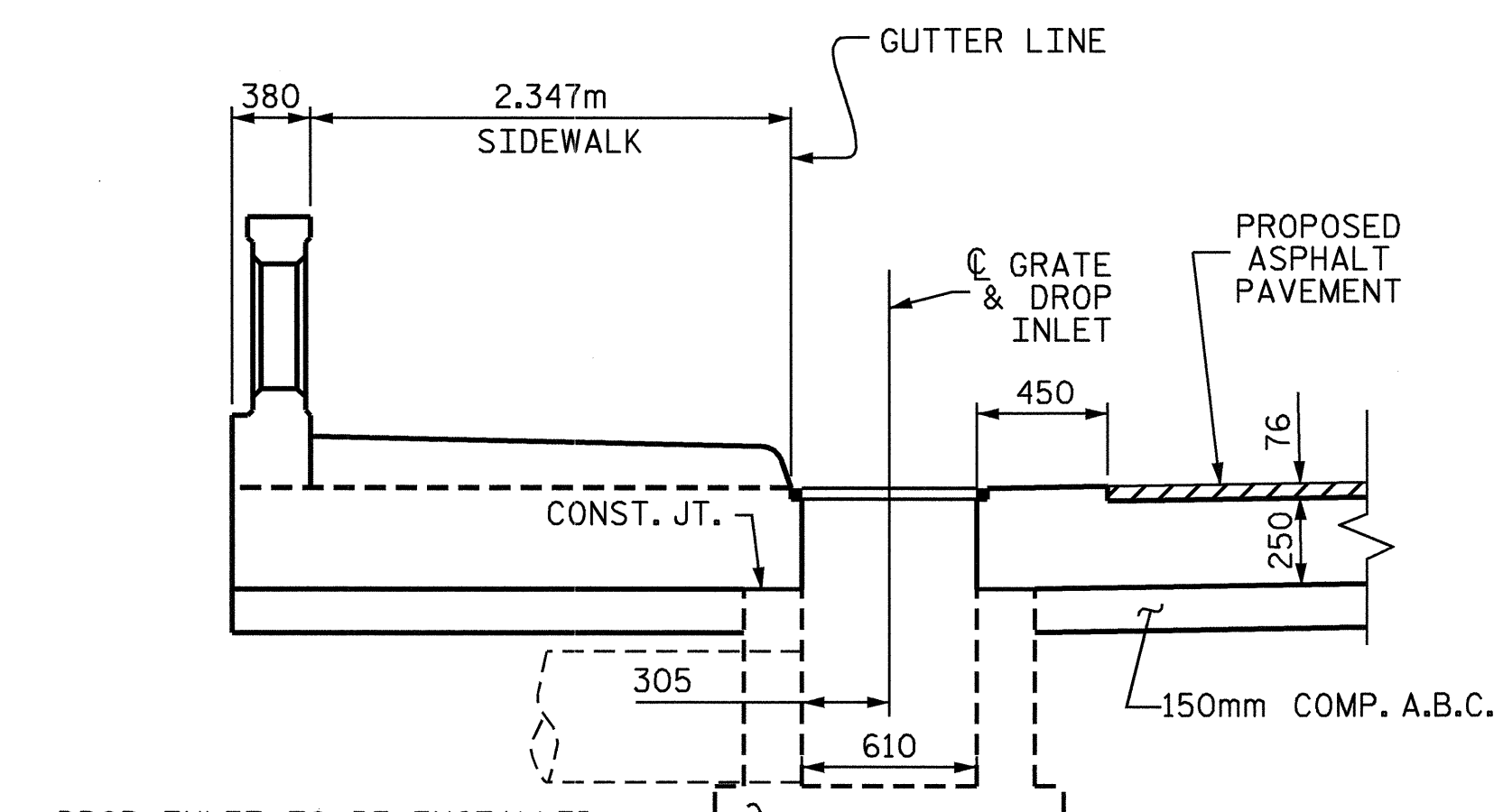
DROP INLET AND GRATE ARE ROADWAY PAY ITEMS. SEE ROADWAY PLANS FOR DETAILS.



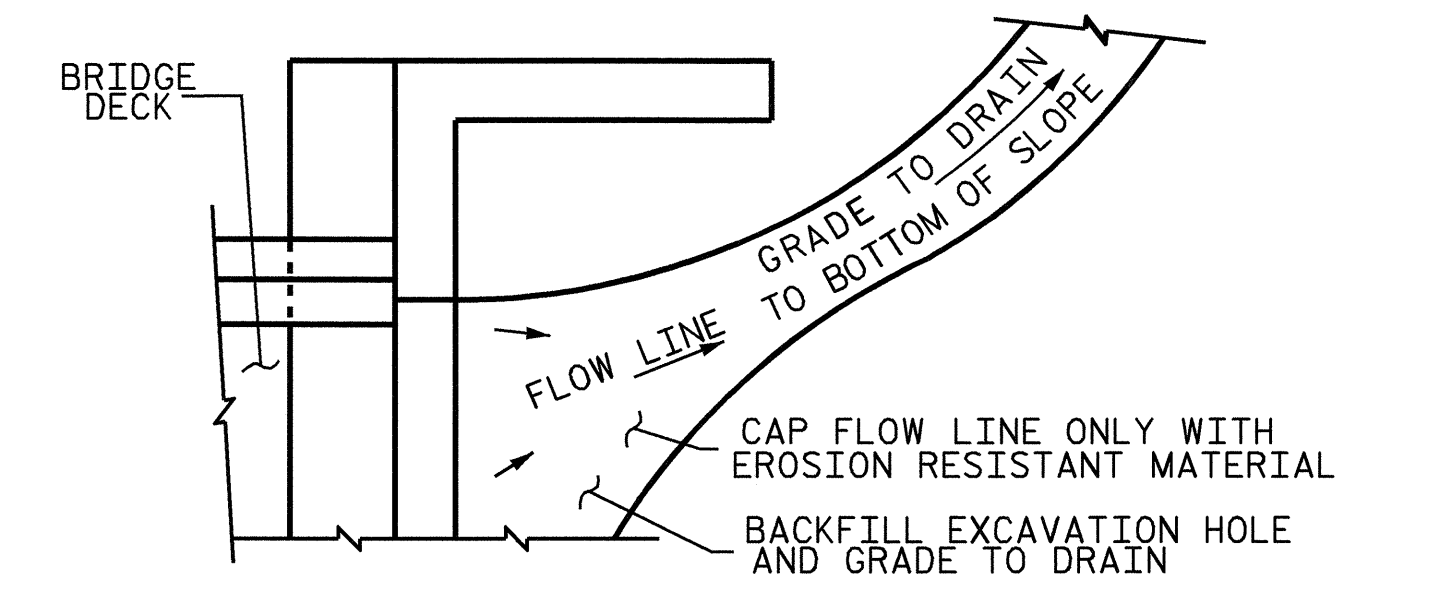
PLAN VIEW
TEMPORARY BERM AND SLOPE DRAIN DETAILS
TO BE USED WHEN SHOULDER BERM GUTTER IS REQUIRED



SECTION A-A

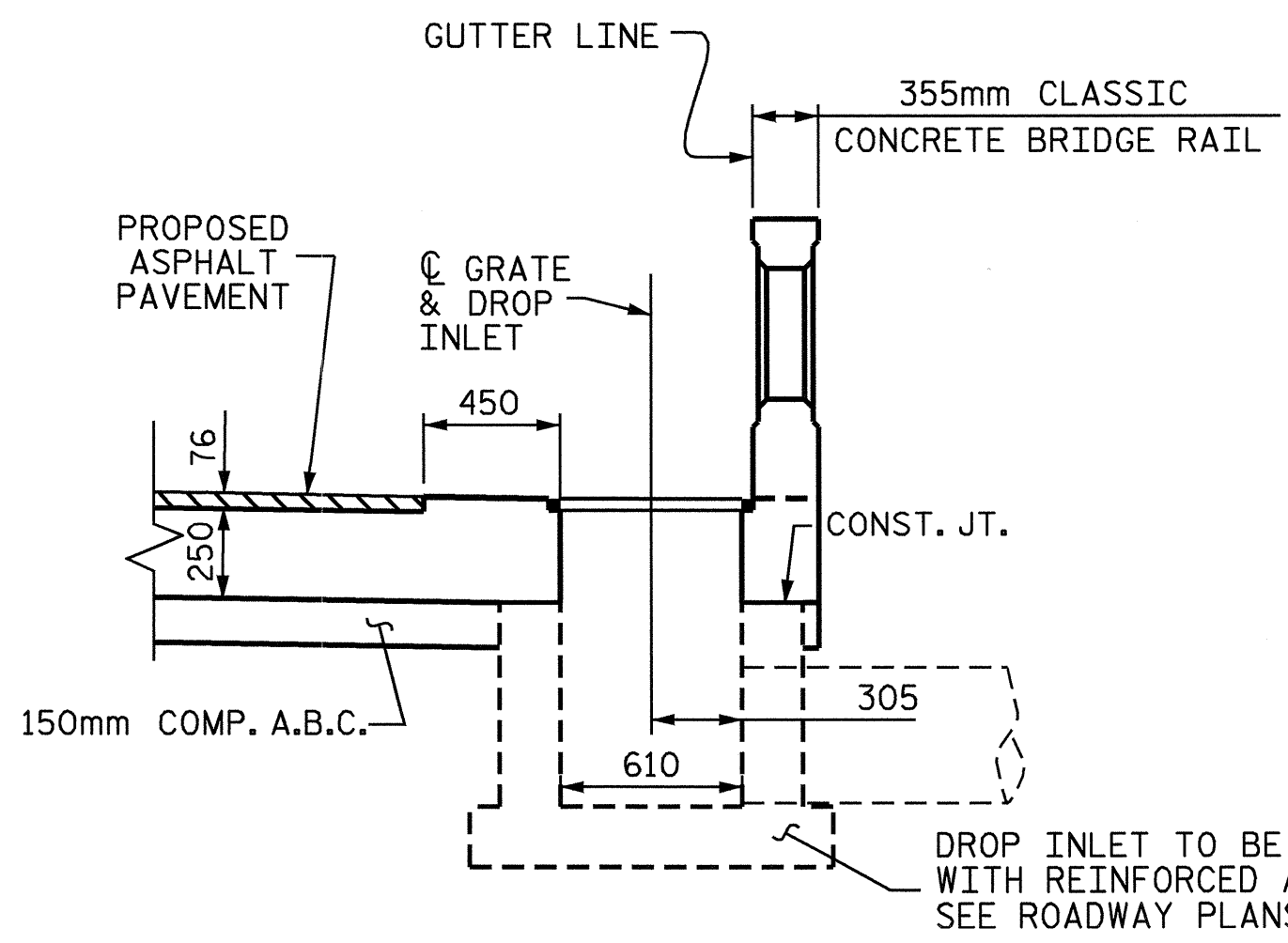


SECTION B-B
LEFT SIDE



NOTE: IF THE APPROACH SLAB IS NOT CONSTRUCTED IMMEDIATELY AFTER THE BACKFILLING OF THE END BENT EXCAVATION, GRADE TO DRAIN TO THE BOTTOM OF THE SLOPE AND PROVIDE EROSION RESISTANT MATERIAL, SUCH AS FIBERGLASS ROVING OR AS DIRECTED BY THE ENGINEER TO PREVENT SOIL EROSION AND TO PROTECT THE AREA ADJACENT TO THE STRUCTURE. THE CONTRACTOR WILL BE REQUIRED TO REMOVE THESE MATERIALS PRIOR TO CONSTRUCTION OF THE APPROACH SLAB.

TEMPORARY DRAINAGE DETAIL



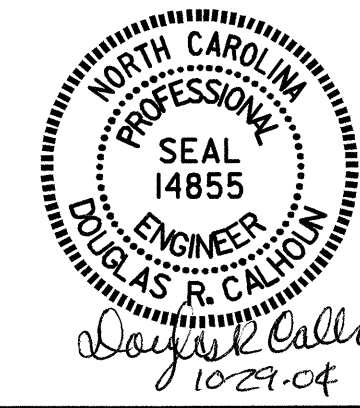
SECTION B-B
RIGHT SIDE

PROJECT NO. B-2583
MADISON COUNTY
STATION: 12+21.750 -L-

SHEET 14 of 14

STATE OF NORTH CAROLINA
DEPARTMENT OF TRANSPORTATION
RALEIGH

**STANDARD
BRIDGE APPROACH
SLAB DETAILS**



REVISIONS					SHEET NO.
NO.	BY:	DATE:	NO.	BY:	DATE:
1			3		
2			4		

TOTAL SHEETS: 112

ASSEMBLED BY : T.A. HARRIS	DATE : 8/24/04
CHECKED BY : K.P. SEDA	DATE : 8/27/04
DRAWN BY : FCJ 11/88	REV. 8/16/99 RAL/LES
CHECKED BY : ARB 11/88	REV. 10/17/00 RWW/LES
	REV. 5/17/03 RWW/JTE