

ELEVATION OF RAIL

(LEFT SIDE)

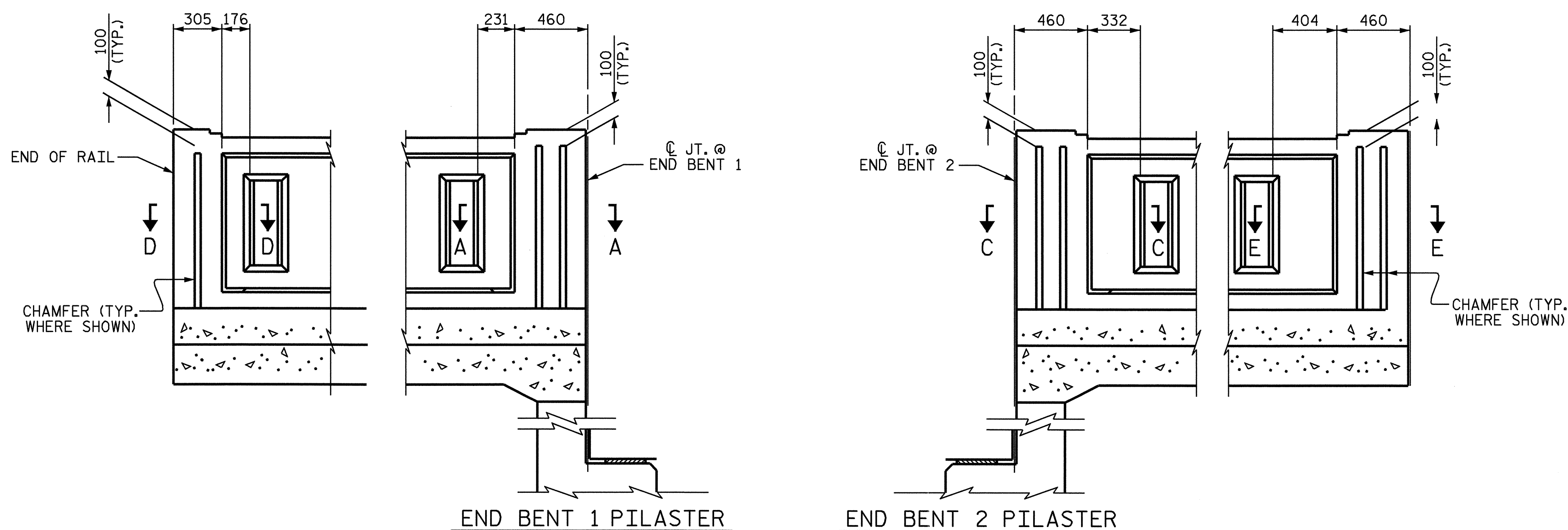
NOTES

THE CLASSIC CONCRETE BRIDGE RAIL SHALL NOT BE CAST UNTIL ALL SLAB CONCRETE HAS BEEN CAST AND HAS REACHED A MINIMUM COMPRESSIVE STRENGTH OF 3,000 PSI.

ALL REINFORCING STEEL IN CLASSIC CONCRETE BRIDGE RAILS AND SIDEWALK SHALL BE EPOXY COATED.

FOR CLASSIC CONCRETE BRIDGE RAIL, SEE SPECIAL PROVISIONS.

ALL PARTS OF THE CLASSIC CONCRETE BRIDGE RAIL ON SUPERSTRUCTURE INCLUDING, BUT NOT LIMITED TO THE REINFORCING STEEL, CLASS AA CONCRETE, AND INCIDENTALS SHALL BE INCLUDED IN THE COST PER LINEAR FOOT OF "CLASSIC CONCRETE BRIDGE RAIL".



ELEVATION OF RAIL

(@ APPROACH SLABS - LEFT SIDE)

PROJECT NO. B-2583
MADISON COUNTY
 STATION: 11+03.000 -Y1-

SHEET 4 OF 7

STATE OF NORTH CAROLINA
 DEPARTMENT OF TRANSPORTATION
 RALEIGH

**CLASSIC CONCRETE
 BRIDGE RAIL
 AND SIDEWALK**



Douglas R. Callan
 10-21-04

DRAWN BY : T. A. HARRIS DATE : 12/3/02
 CHECKED BY : W. S. ARAFAT DATE : 7/9/04

29-OCT-2004 09:52
 W:\squado\b2583\taharris\Microstation\str2\b2583_sd_br_02.dgn
 TAHarris

REVISIONS						SHEET NO.
NO.	BY:	DATE:	NO.	BY:	DATE:	S-89
1			3			TOTAL SHEETS
2			4			112