

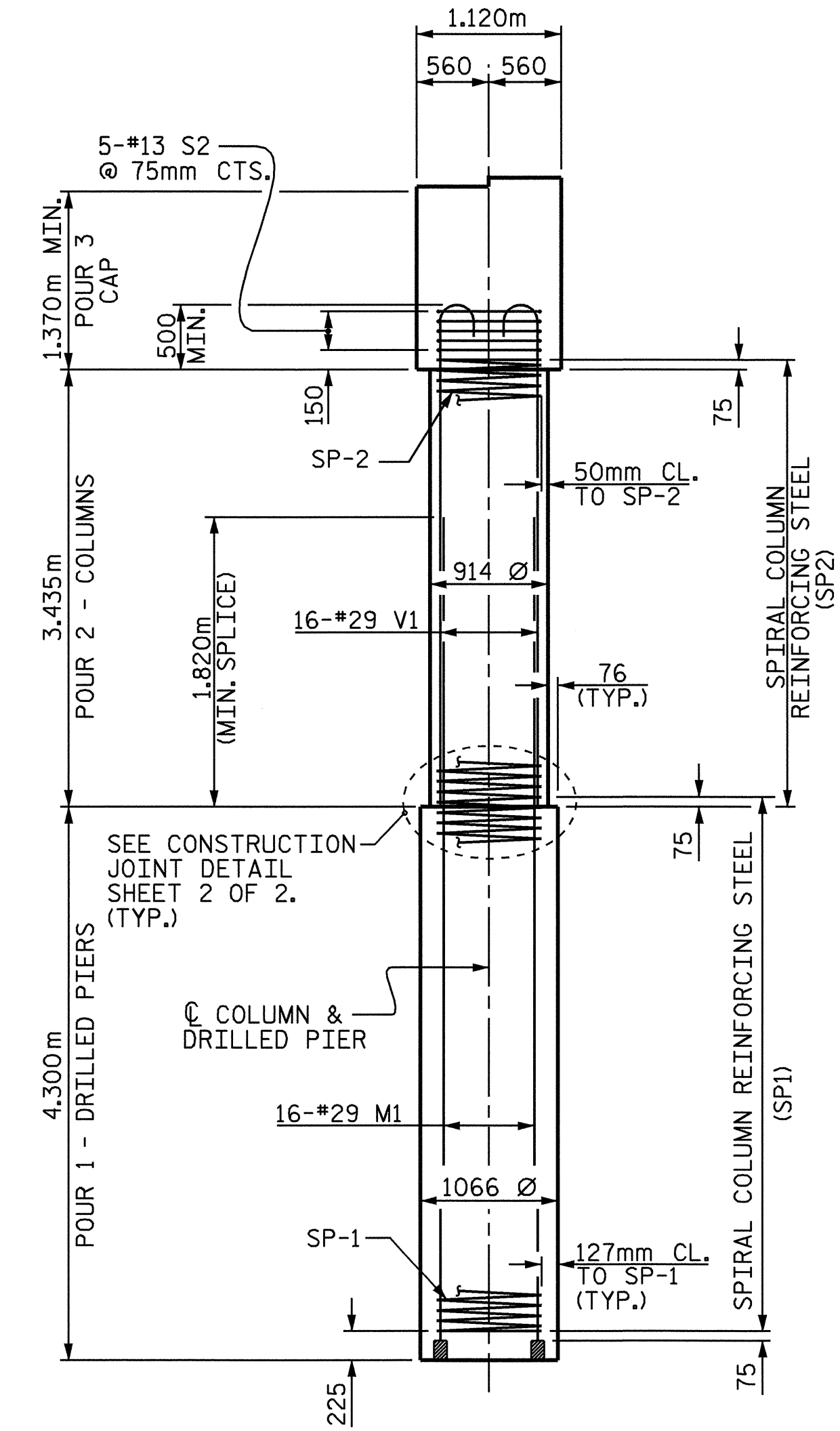
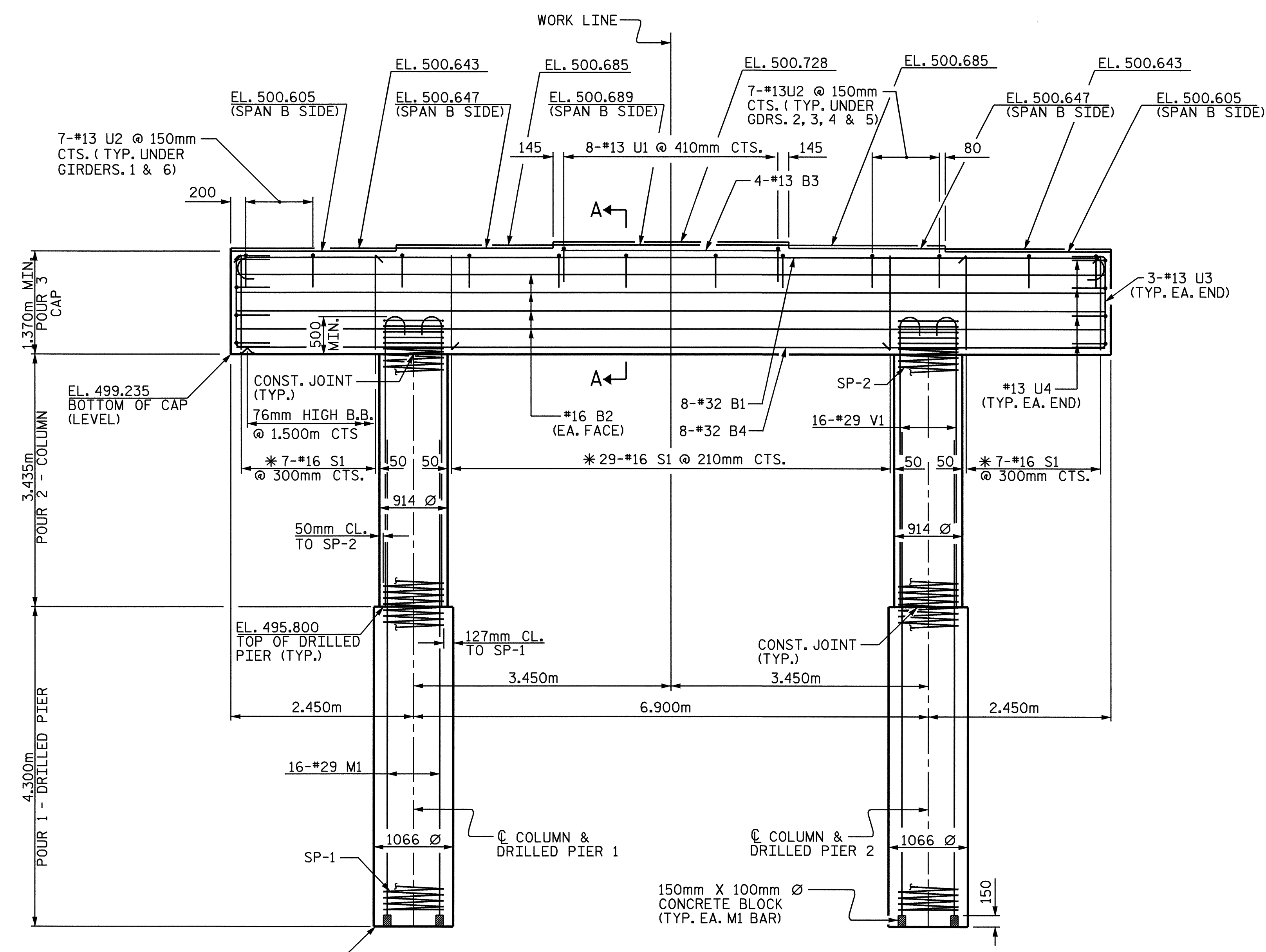
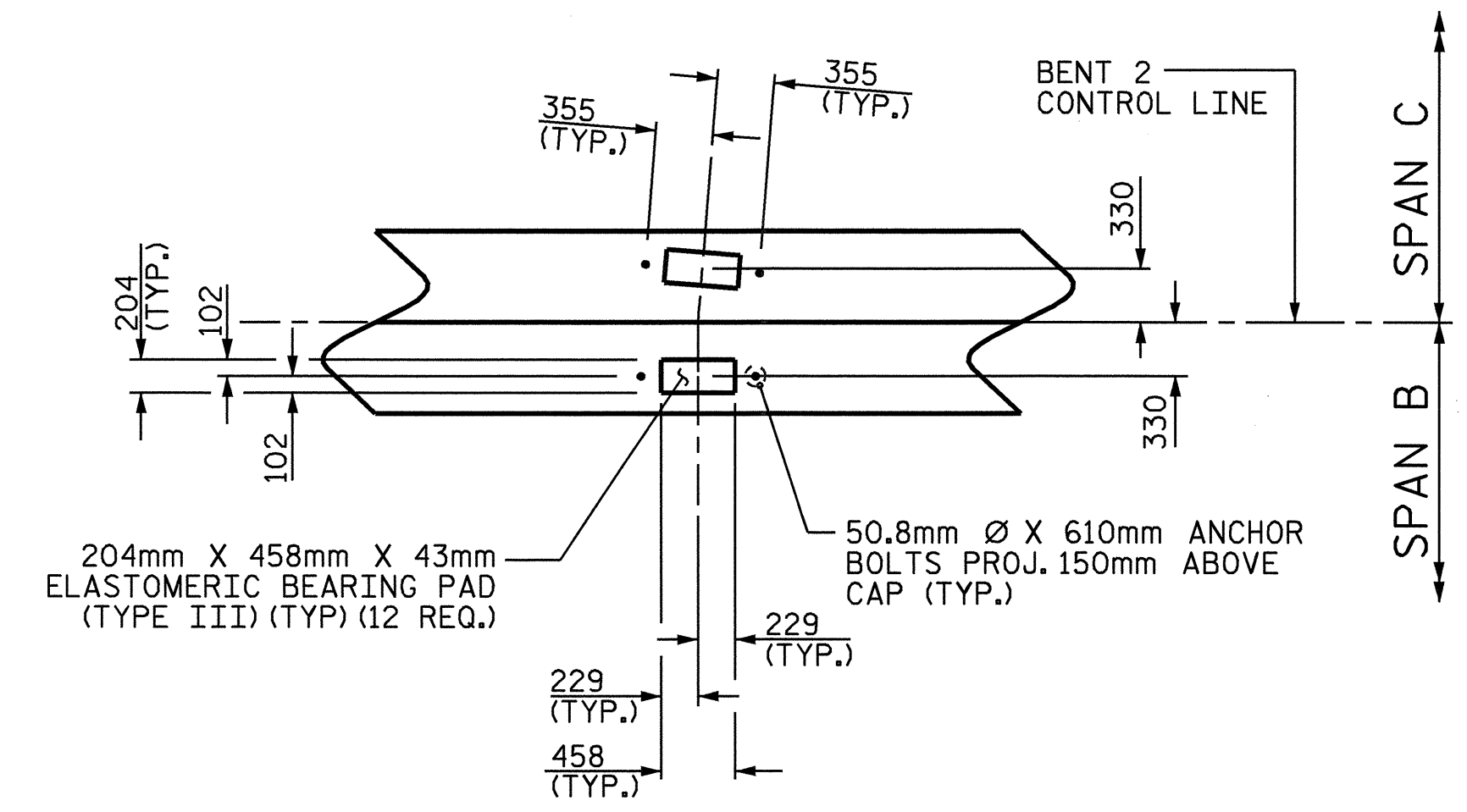
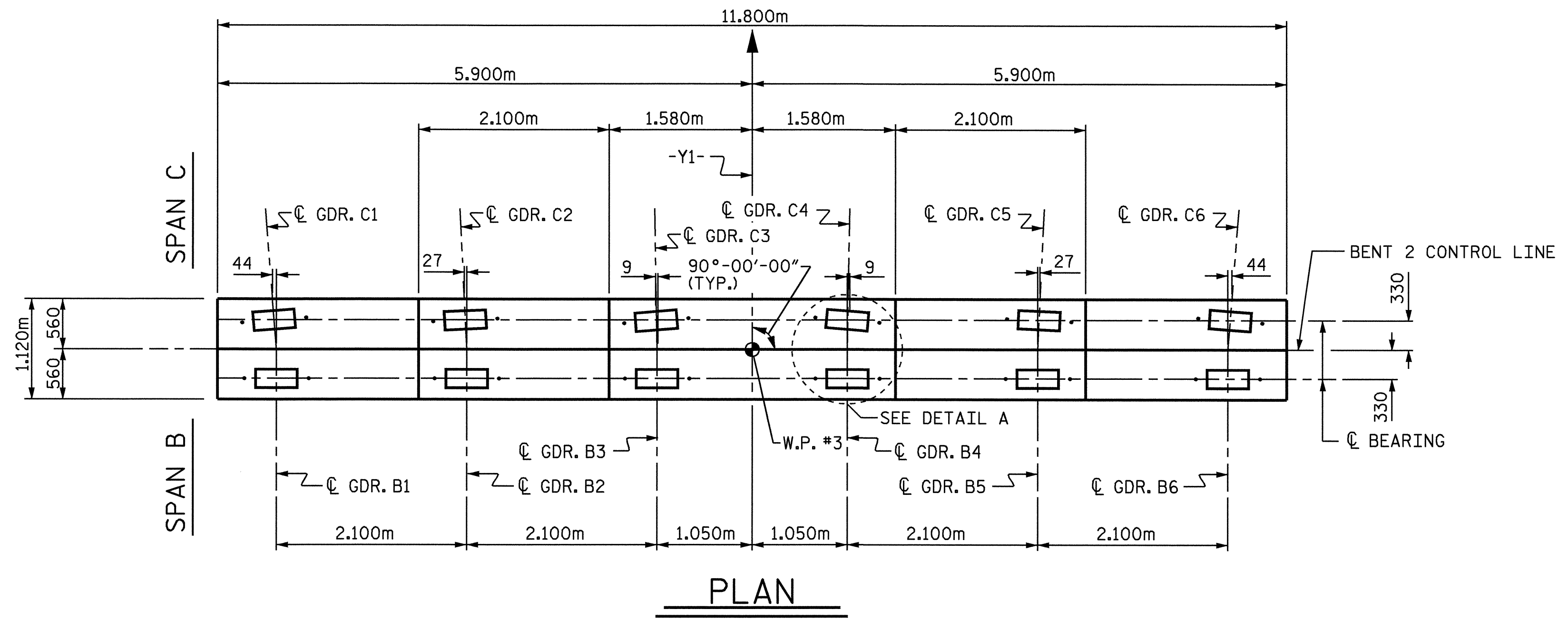
**NOTES:**

STIRRUPS IN CAP MAY BE SHIFTED AS NECESSARY TO CLEAR ANCHOR BOLTS.

HOOKS ON "V" BARS MAY BE TURNED AS NECESSARY FOR PLACING REINFORCING STEEL.

ALL STEEL IN THE DRILLED PIERS IS INCLUDED IN THE PAY ITEMS FOR "REINFORCING STEEL" AND "SPIRAL COLUMN REINFORCING STEEL".

THE CONTRACTOR'S ATTENTION IS CALLED TO THE FACT THAT THE LONGITUDINAL REINFORCEMENT FOR THE DRILLED PIERS IS DETAILED WITH ONE METER OF EXTRA LENGTH.



**ELEVATION**

**END ELEVATION**

REINFORCING STEEL AND DIMENSIONS TYPICAL FOR ALL DRILLED PIERS AND COLUMNS.

NOTE: \* INVERT ALTERNATE STIRRUPS.

PROJECT NO. B-2583  
MADISON COUNTY  
 STATION: 11+03.00 -Y1-  
 SHEET 1 OF 2

|  |     |       |     |     |                     |
|--|-----|-------|-----|-----|---------------------|
| STATE OF NORTH CAROLINA<br>DEPARTMENT OF TRANSPORTATION<br>RALEIGH |     |       |     |     |                     |
| SUBSTRUCTURE<br>BENT 2   |     |       |     |     |                     |
| REVISIONS  |     |       |     |     |                     |
| NO.  | BY: | DATE: | NO. | BY: | DATE:               |
| 1  |     |       | 3   |     |                     |
| 2  |     |       | 4   |     |                     |
|  |     |       |     |     | SHEET NO.<br>S-99   |
|  |     |       |     |     | TOTAL SHEETS<br>112 |



DRAWN BY: A.L. MEADOWS DATE: 3/15/04  
 CHECKED BY: W.S. ARAFAT DATE: 5/28/04