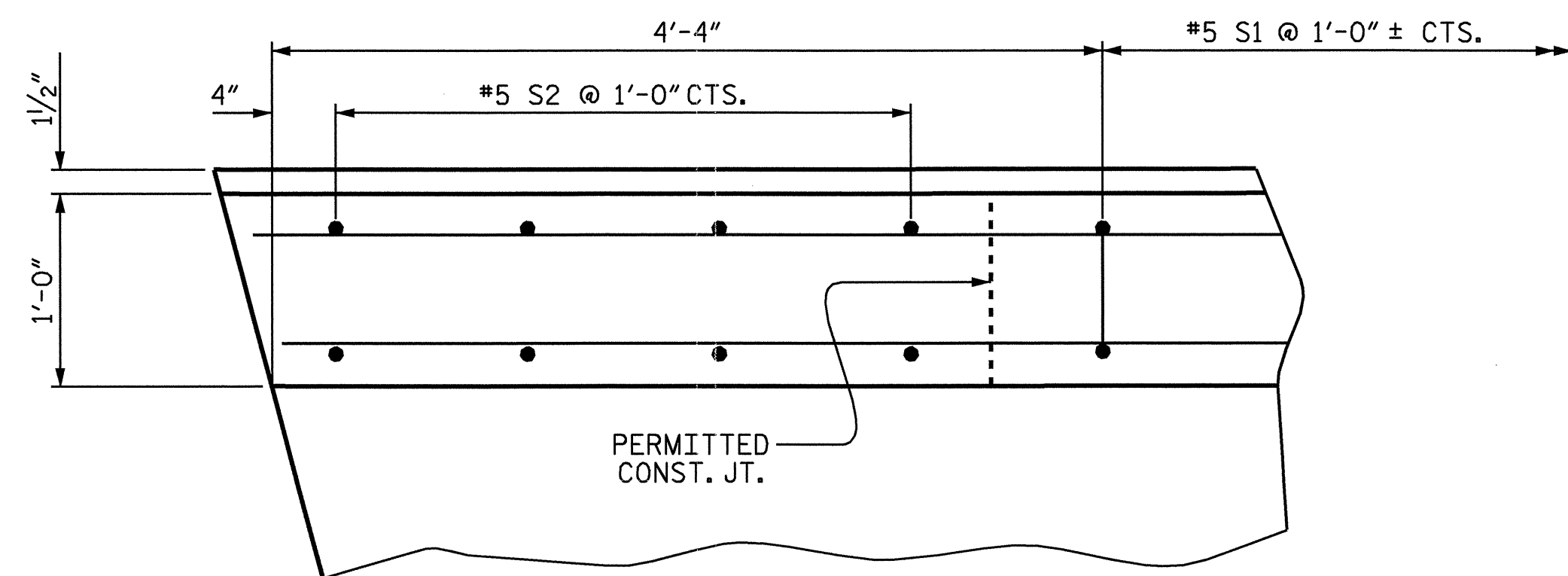
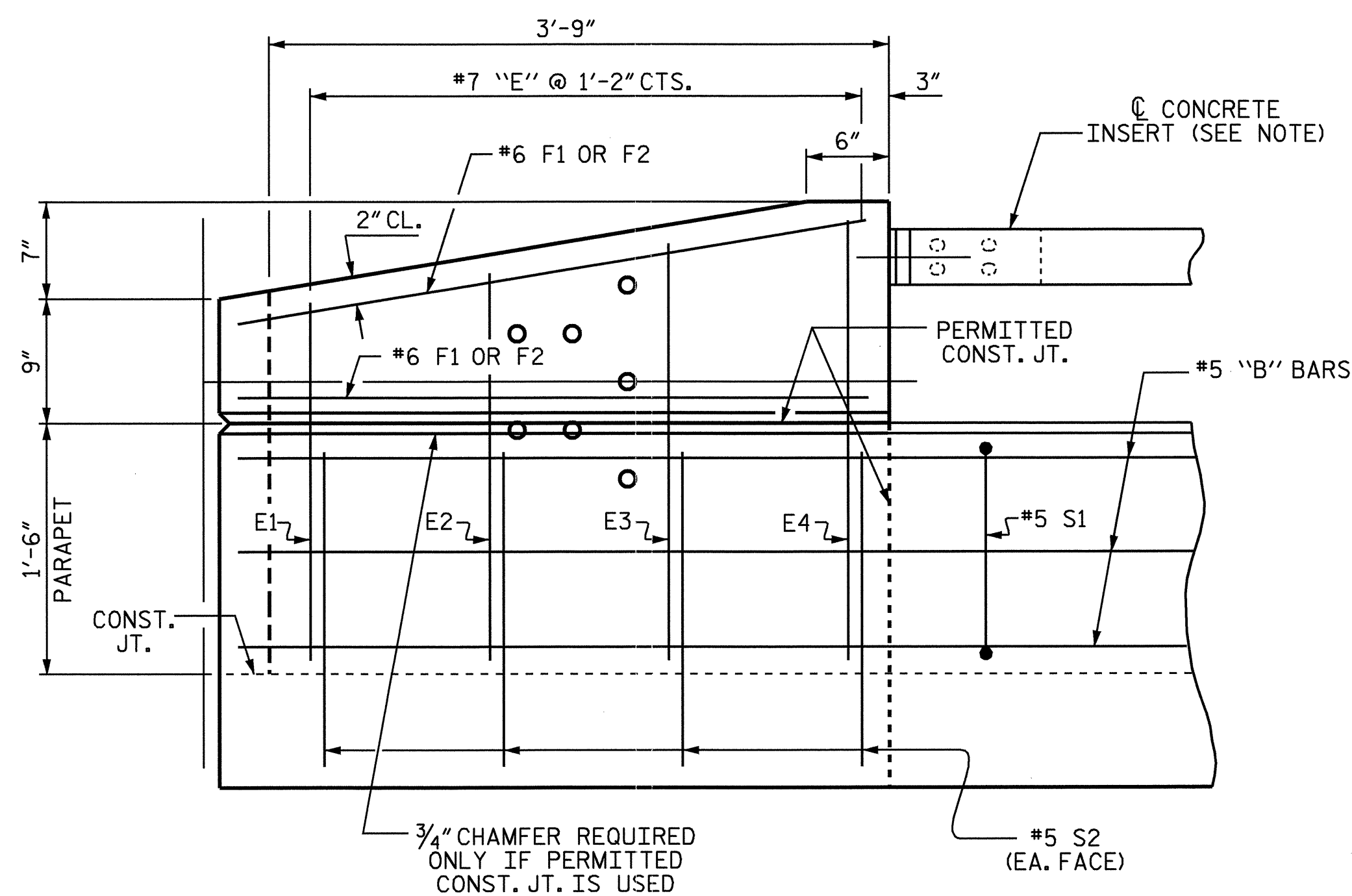


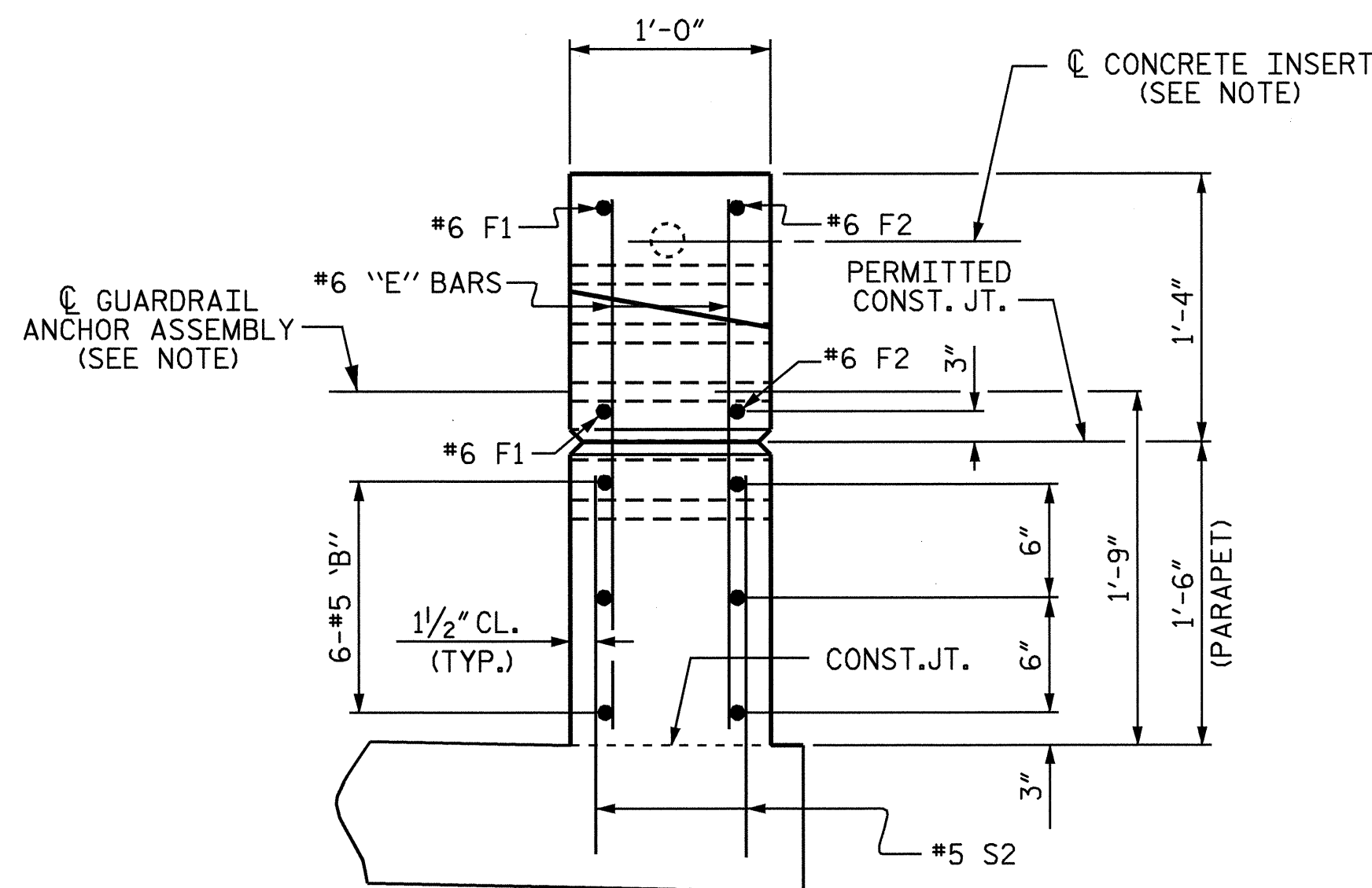
PLAN OF END POST



PLAN OF PARAPET

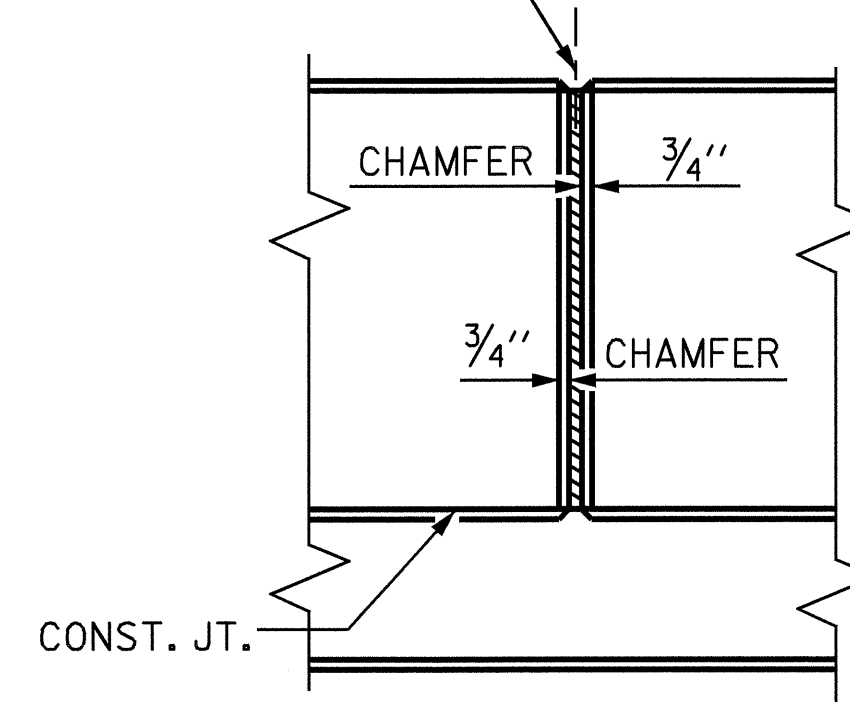


ELEVATION

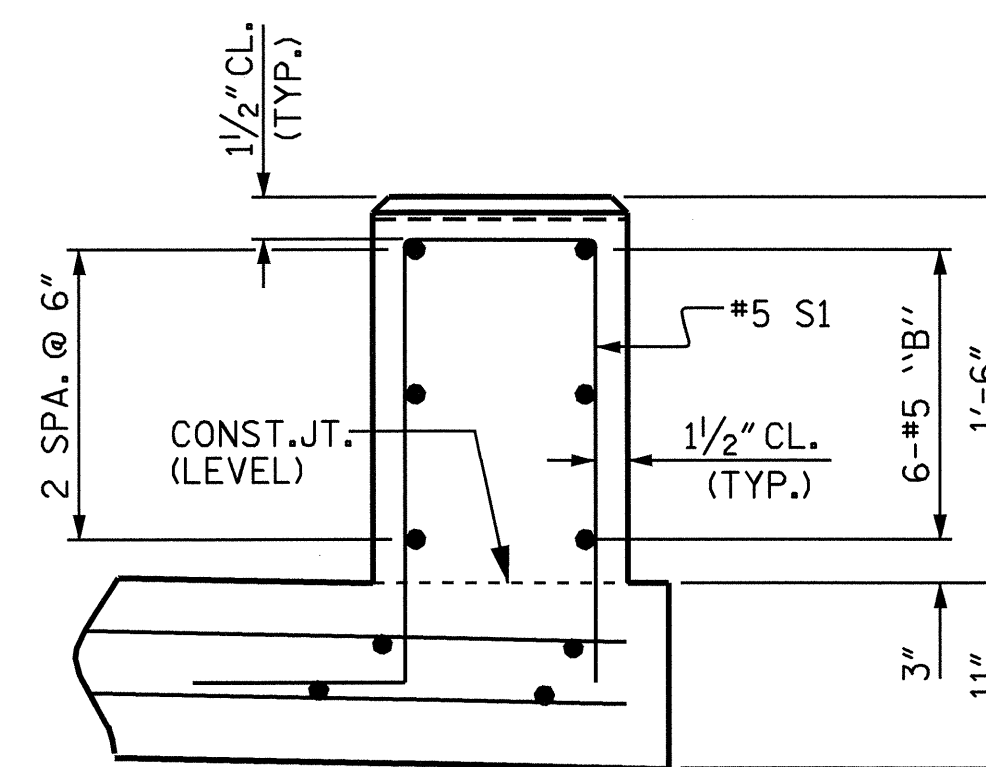


END VIEW

1/2" EXP. JT. MAT'L HELD IN PLACE WITH GALVANIZED NAILS.  
( NOTE: OMIT EXP. JT. MAT'L. WHEN SLIP FORM IS USED.)

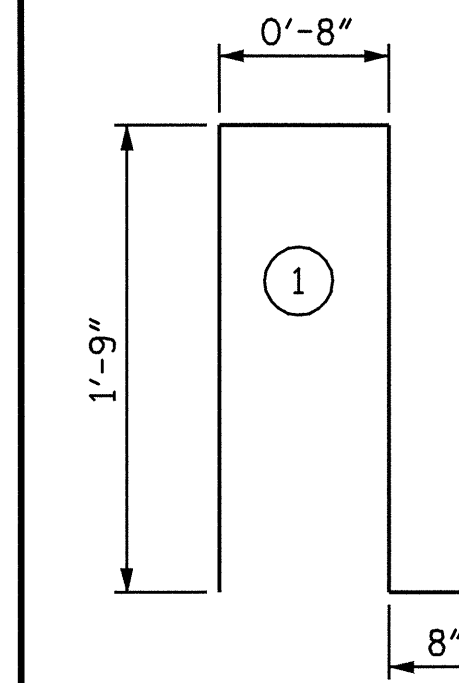


ELEVATION AT EXPANSION JOINTS  
PARAPET DETAILS



SECTION THRU RAIL

ALL BAR DIMENSIONS ARE OUT TO OUT.



BAR TYPE		BILL OF MATERIAL FOR CONCRETE PARAPET AND END POST				
BAR	NO.	SIZE	TYPE	LENGTH	WEIGHT	
*B1	24	#5	STR	11'-1"	277	
*B2	48	#5	STR	29'-7"	1481	
*B3	24	#5	STR	10'-11"	273	
*E1	8	#7	STR	2'-0"	33	
*E2	8	#7	STR	2'-2"	35	
*E3	8	#7	STR	2'-5"	40	
*E4	8	#7	STR	2'-7"	42	
*F1	4	#6	STR	3'-6"	21	
*F2	4	#6	STR	3'-8"	22	
*S1	298	#5	1	4'-8"	1450	
*S2	32	#5	STR	1'-11"	64	
* EPOXY COATED REINF. STEEL =					3738 LBS	
CLASS AA CONCRETE					17.5 C.Y.	
CONCRETE PARAPET					315.69 FT.	
* THESE BARS ARE EPOXY COATED						

NOTES

FOR DETAILS OF CONCRETE INSERT AND GUARDRAIL ANCHOR ASSEMBLY, SEE "RAIL POST SPACINGS AND END OF RAIL DETAILS" SHEET.

ALL REINFORCING STEEL IN THE CONCRETE PARAPET SHALL BE EPOXY COATED.

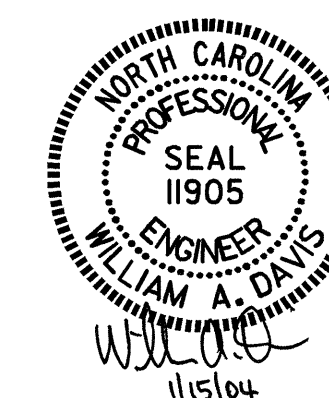
THE #5 S2 BARS SHALL BE INSTALLED USING AN ADHESIVE ANCHORING SYSTEM AFTER SAWING THE JOINT. FOR ADHESIVELY ANCHORED BOLTS OR DOWELS, SEE SPECIAL PROVISIONS. THE YIELD LOAD OF THE #5 S2 BARS IS 18.6 KIPS. FIELD TESTING OF THE ADHESIVE BONDING SYSTEM IS NOT REQUIRED.

PROJECT NO. B-3485  
MACON COUNTY  
STATION: 15+52.00 -L-

SHEET 2 OF 2

STATE OF NORTH CAROLINA  
DEPARTMENT OF TRANSPORTATION  
RALEIGH

CONCRETE PARAPET  
AND PARAPET  
END POST DETAIL  
(FOR ONE BAR METAL RAIL)



DRAWN BY: S.H. SOCKWELL DATE: 2/6/02  
CHECKED BY: J.G. KHARVA DATE: 2/28/02

PARAPET AND END POST FOR ONE-BAR RAIL

REVISIONS					SHEET NO.
NO.	BY:	DATE:	NO.	BY:	DATE:
1			3		
2			4		

S-15  
TOTAL SHEETS: 32