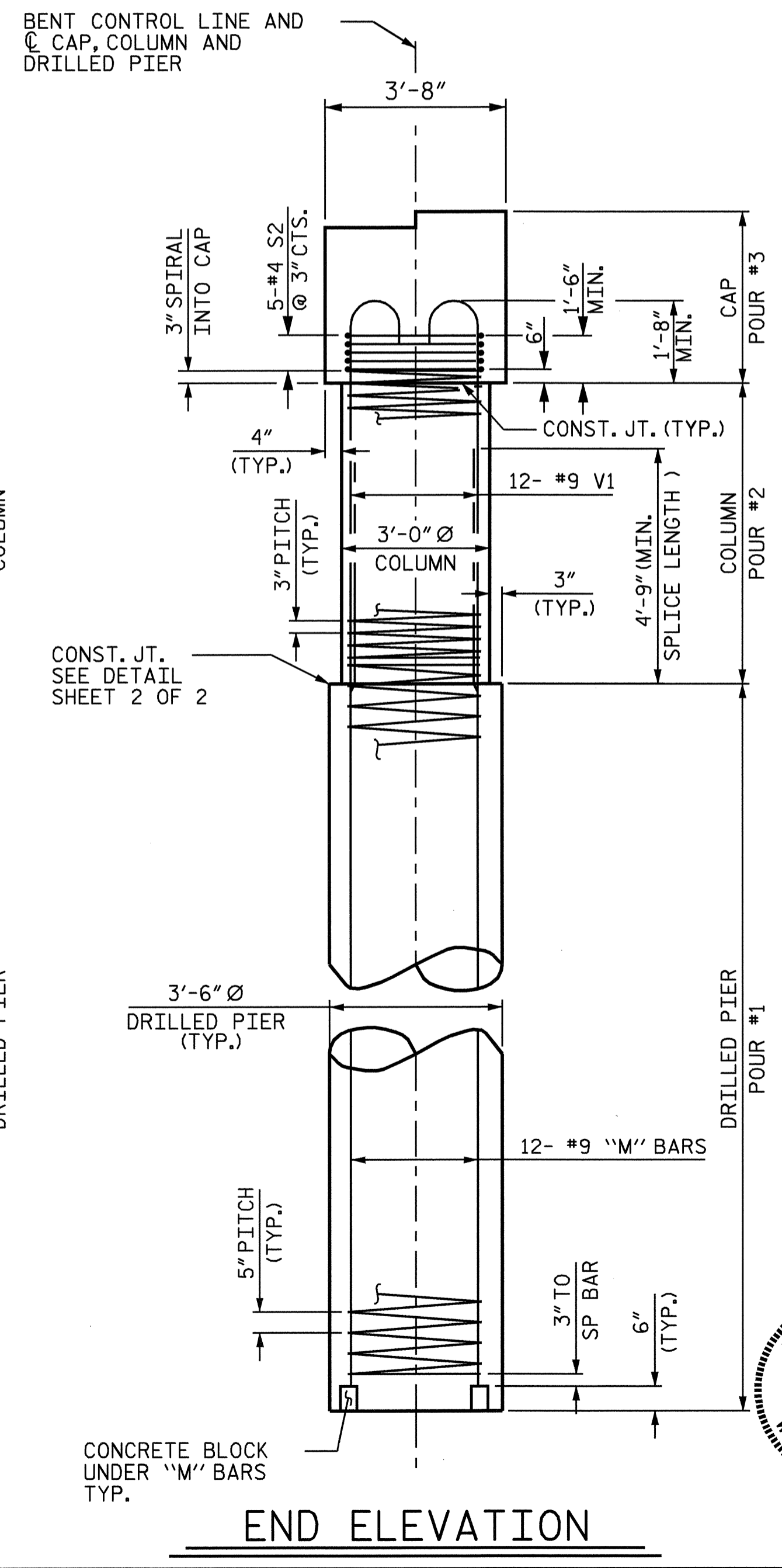
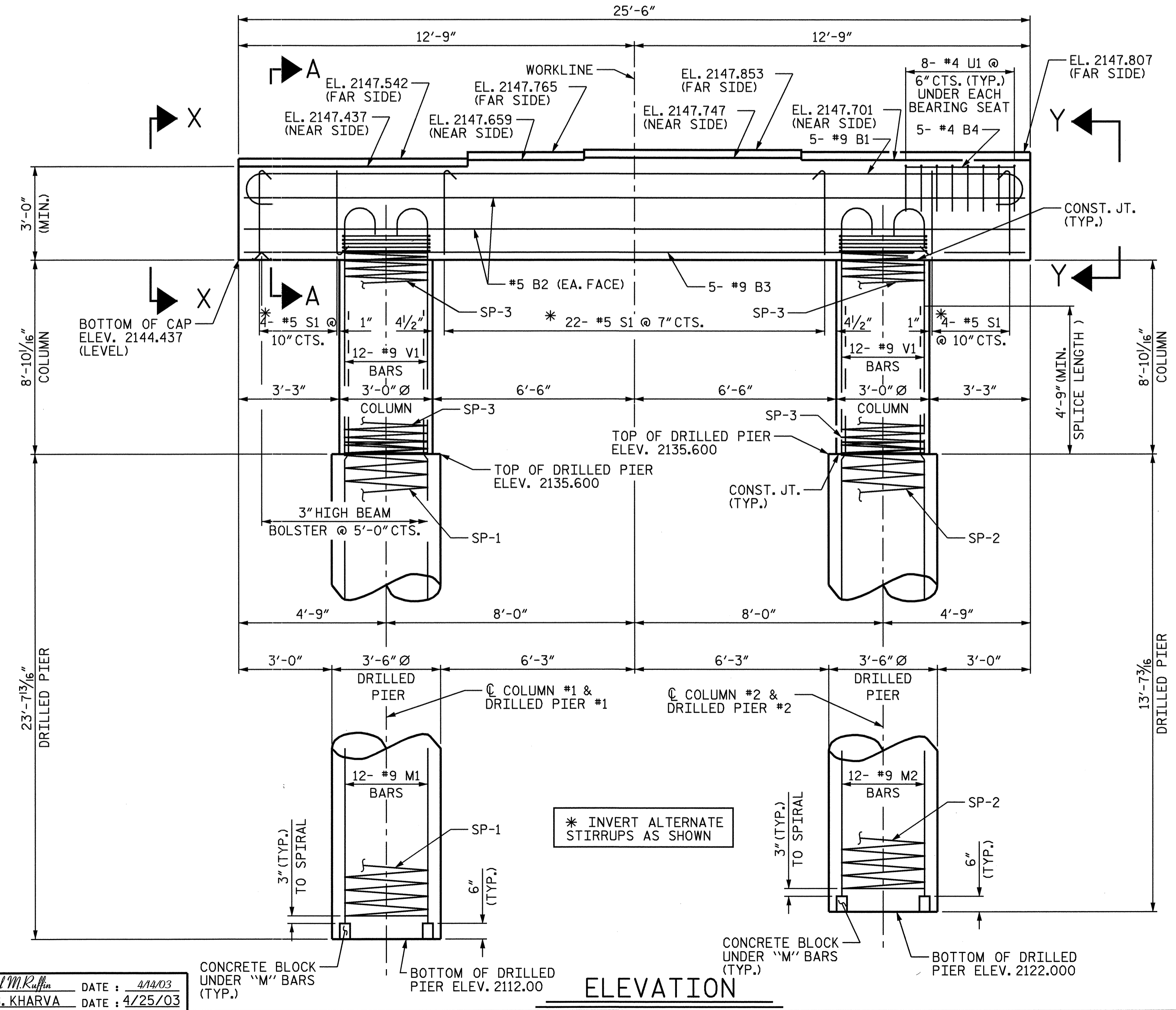
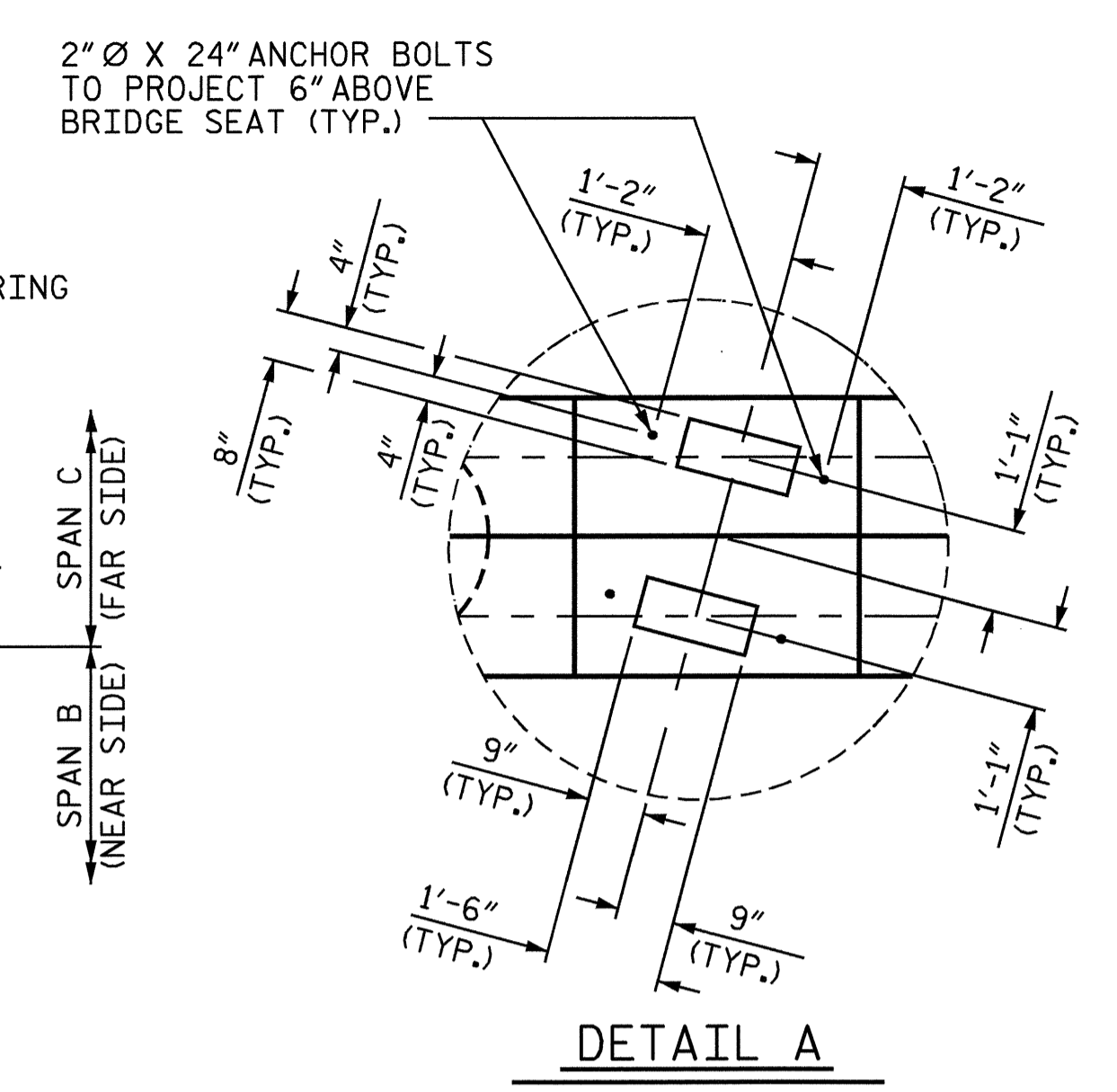
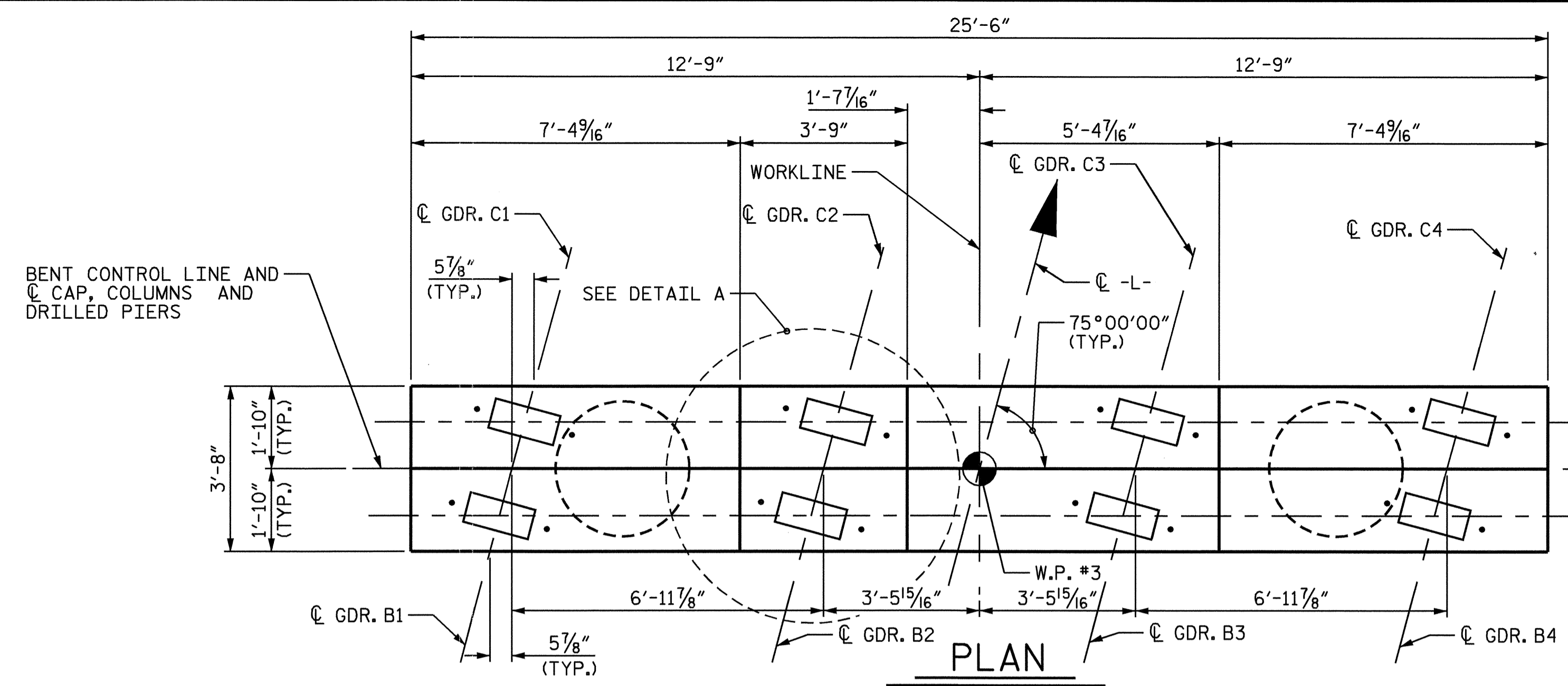


---- NOTES ----

STIRRUPS IN CAP MAY BE SHIFTED AS NECESSARY TO CLEAR ANCHOR BOLTS.  
HOOKS ON "V" BARS MAY BE TURNED AS NECESSARY FOR PLACING REINFORCING STEEL.

ALL STEEL IN THE DRILLED PIERS IS INCLUDED IN THE PAY ITEMS FOR "REINFORCING STEEL" AND "SPIRAL COLUMN REINFORCING STEEL" OR "EPOXY COATED SPIRAL COLUMN REINFORCING STEEL".

THE CONTRACTORS ATTENTION IS CALLED TO THE FACT THAT THE LONGITUDINAL REINFORCEMENT FOR THE DRILLED PIERS IS DETAILED WITH 3 FEET OF EXTRA LENGTH.



DRAWN BY: Nail McKiffin DATE: 4/24/03  
CHECKED BY: J. G. KHARVA DATE: 4/25/03

CONCRETE BLOCK UNDER "M" BARS (TYP.)  
BOTTOM OF DRILLED PIER ELEV. 2112.00

\* INVERT ALTERNATE STIRRUPS AS SHOWN

CONCRETE BLOCK UNDER "M" BARS (TYP.)  
BOTTOM OF DRILLED PIER ELEV. 2122.00

PROJECT NO. B-3485  
MACON COUNTY  
STATION: 15+52.00 -L-  
SHEET 1 OF 2

STATE OF NORTH CAROLINA DEPARTMENT OF TRANSPORTATION RALEIGH					
SUBSTRUCTURE BENT #2					
REVISIONS					
NO.	BY:	DATE:	NO.	BY:	DATE:
1			3		
2			4		
					SHEET NO. S-25
					TOTAL SHEETS 32

