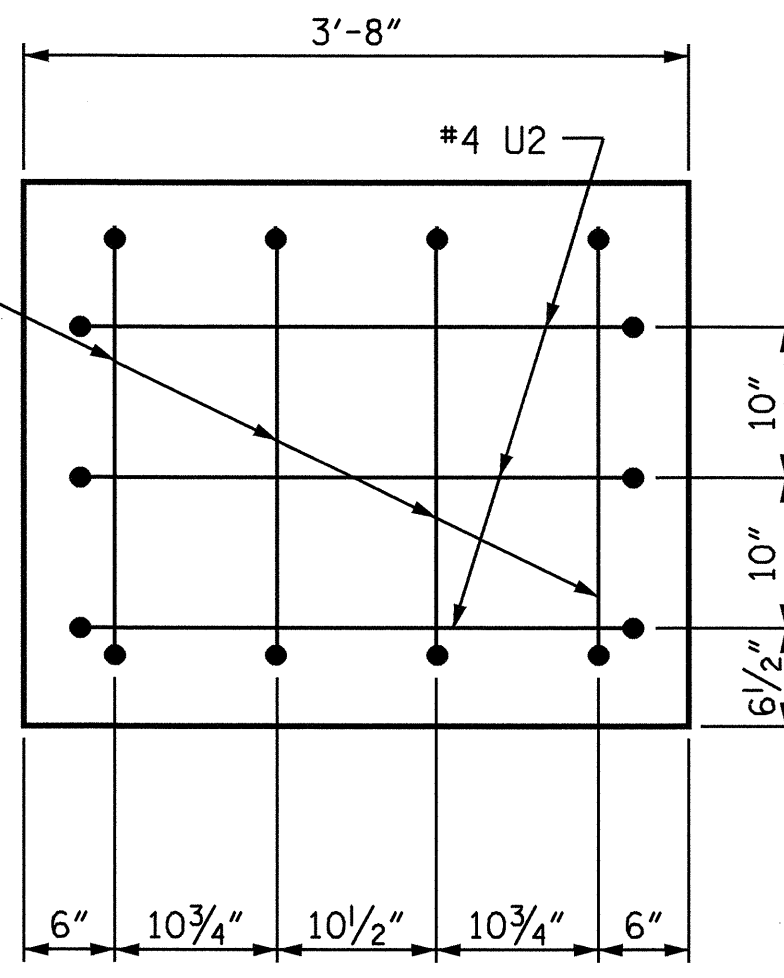
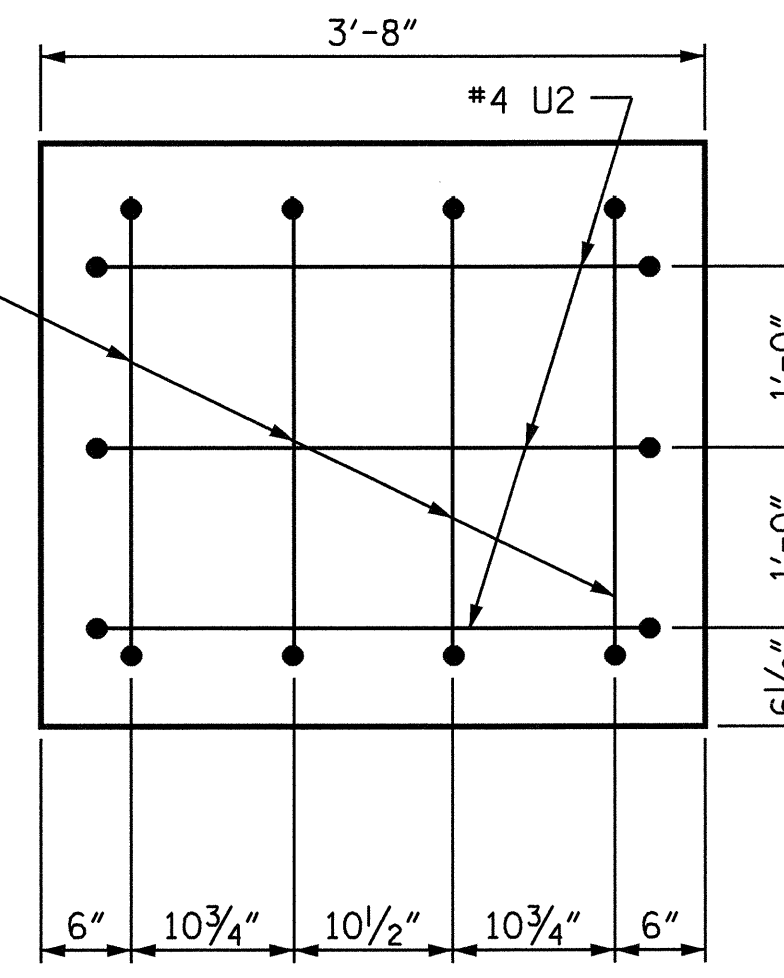


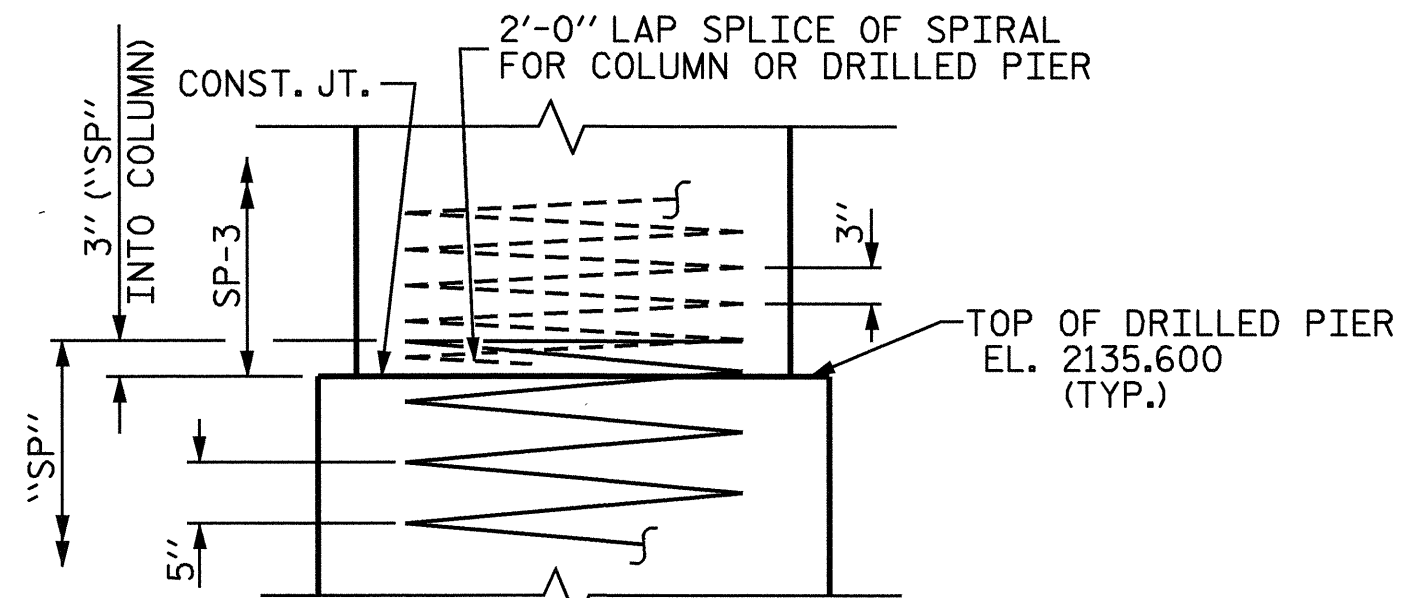
SECTION A-A



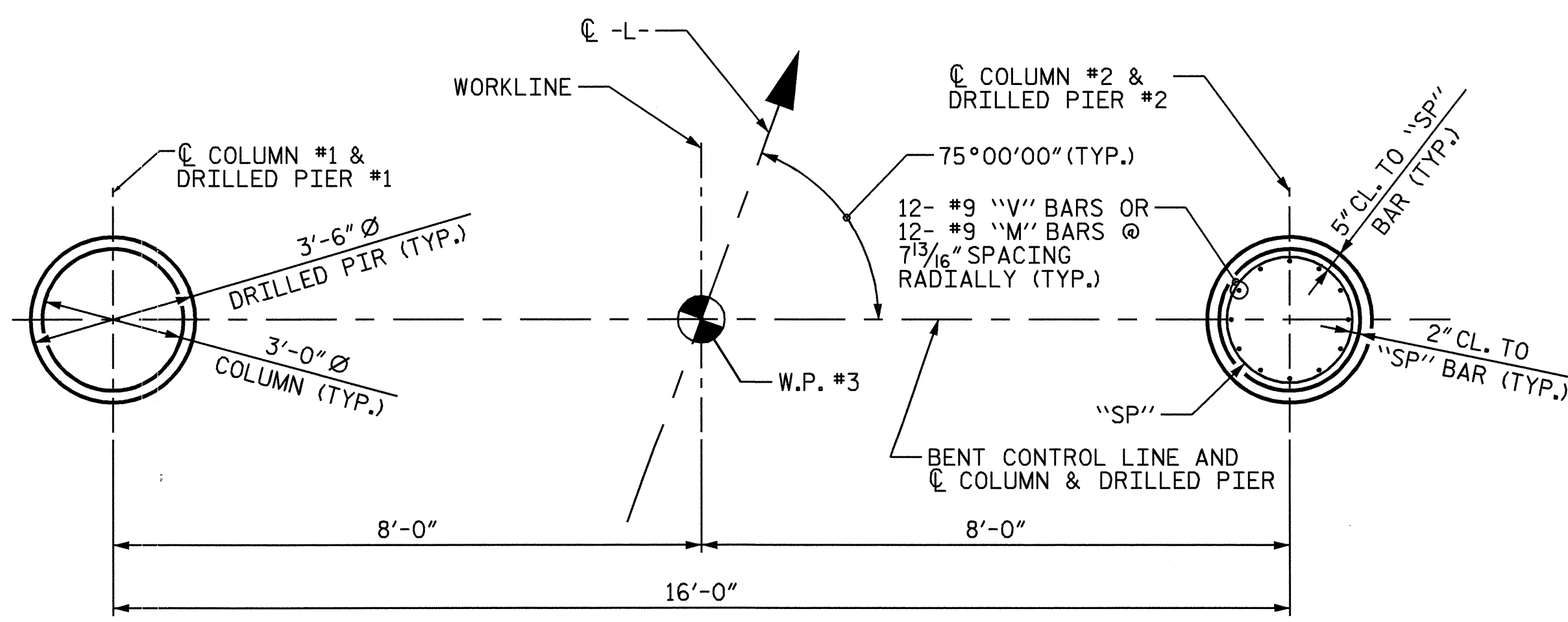
END VIEW X-X



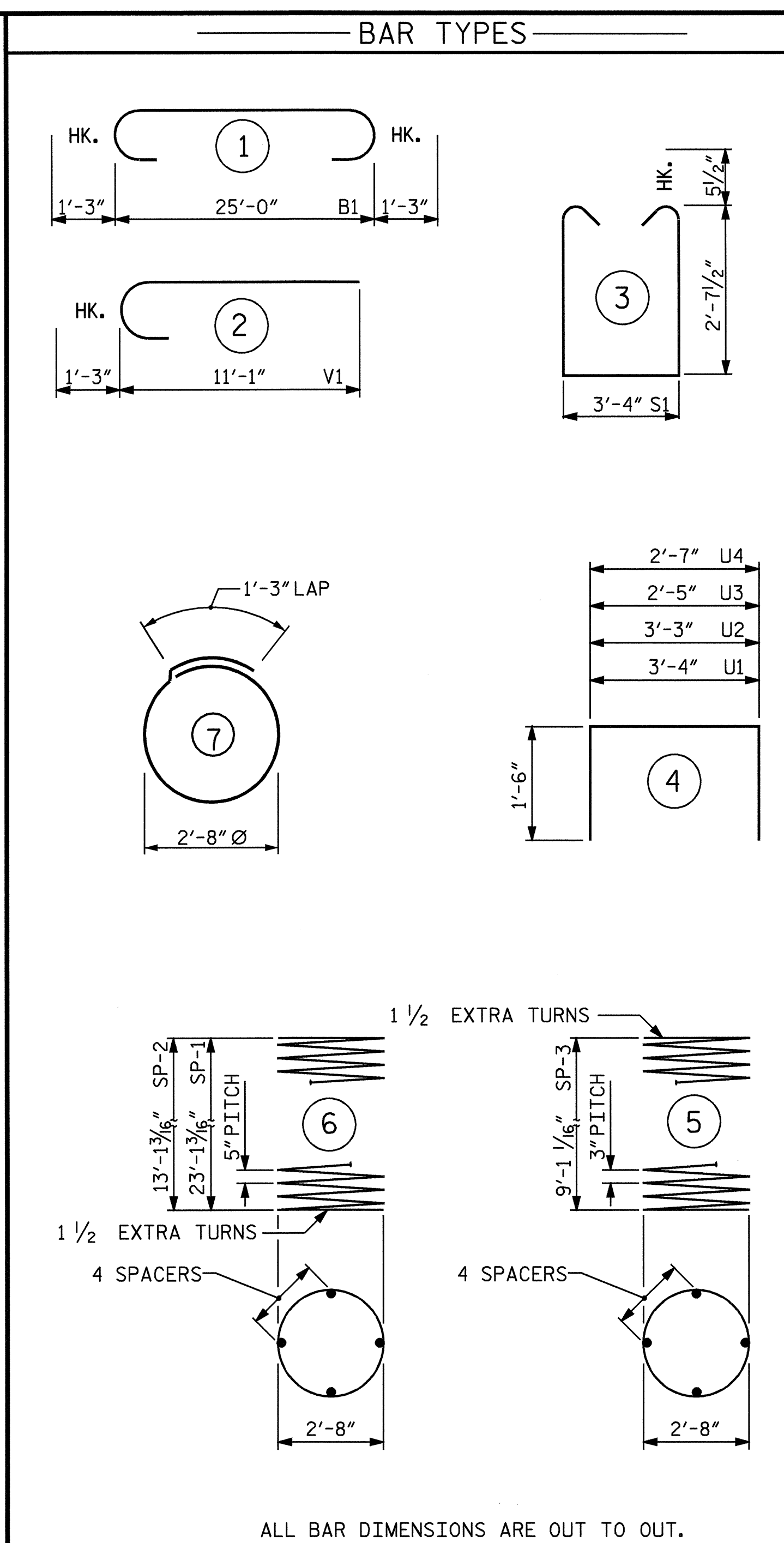
END VIEW Y-Y



CONSTRUCTION JOINT DETAIL



PLAN OF COLUMNS & DRILLED PIERS



ALL BAR DIMENSIONS ARE OUT TO OUT.
 ** THE SP-3 SPIRAL REINFORCING STEEL SHALL BE W20 OR D-20 COLD DRAWN WIRE OR #4 PLAIN OR DEFORMED BAR.
 *** THE SP-1 AND SP-2 SPIRAL REINFORCING STEEL SHALL BE W31 OR D-31 COLD DRAWN WIRE OR #5 PLAIN OR DEFORM BAR.

BILL OF MATERIAL BENT #2

BAR NO	SIZE	TYPE	LENGTH	WEIGHT	
B1	5	9	1	27'-6"	468
B2	4	5	STR	25'-2"	105
B3	5	9	STR	25'-2"	428
B4	20	4	STR	3'-5"	46
M1	12	9	STR	30'-11"	1261
M2	12	9	STR	20'-11"	853
S1	30	5	3	9'-6"	297
S2	10	4	7	9'-8"	65
U1	32	4	4	6'-4"	135
U2	6	4	4	6'-3"	25
U3	4	4	4	5'-5"	14
U4	4	4	4	5'-7"	15
V1	24	9	2	12'-1"	986
REINFORCING STEEL				lbs.	4,698

SP-1	1	***	6	468'-4"	488
SP-2	1	***	6	270'-11"	283
SP-3	2	*	5	312'-3"	417

SPIRAL COLUMN REINFORCING STEEL					
				lbs.	1,188

CLASS "A" CONCRETE BREAKDOWN				
POUR #2	(COLUMNS)			4.6 C.Y.
POUR #3	(CAP)			11.2 C.Y.
TOTAL				15.8 C.Y.

DRILLED PIERS CONCRETE BREAKDOWN				
POUR #1	(DRILLED PIERS)			13.3 C.Y.

3'-6" Ø DRILLED PIERS (NOT IN SOIL)	LINEAR FEET	19
3'-6" Ø DRILLED PIERS (IN SOIL)	LINEAR FEET	18.2

THE CONTRACTORS ATTENTION IS CALLED TO THE FACT THAT THE LONGITUDINAL REINFORCEMENT FOR THE DRILLED PIERS IS DETAILED WITH THREE (3) FEET OF EXTRA LENGTH.

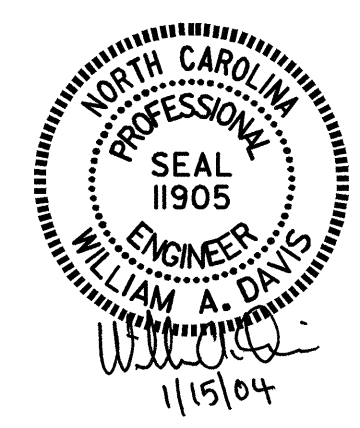
PERMANENT STEEL CASING FOR 3'-6" DRILLED PIERS	LINEAR FEET	20.2
--	-------------	------

CROSSHOLE SONIC LOGGING	EA.	1
CSL TUBES	LINEAR FEET	155.6

PROJECT NO. B-3485
MACON COUNTY
 STATION: 15+52.00 -L-

SHEET 2 OF 2

STATE OF NORTH CAROLINA
 DEPARTMENT OF TRANSPORTATION
 RALEIGH
 SUBSTRUCTURE
 BENT #2



REVISIONS					
NO.	BY:	DATE:	NO.	BY:	DATE:
1			3		
2			4		

SHEET NO.	
S-26	TOTAL SHEETS 32