

### BARRIER MOUNTED GLARE SCREEN

**NOTE:**

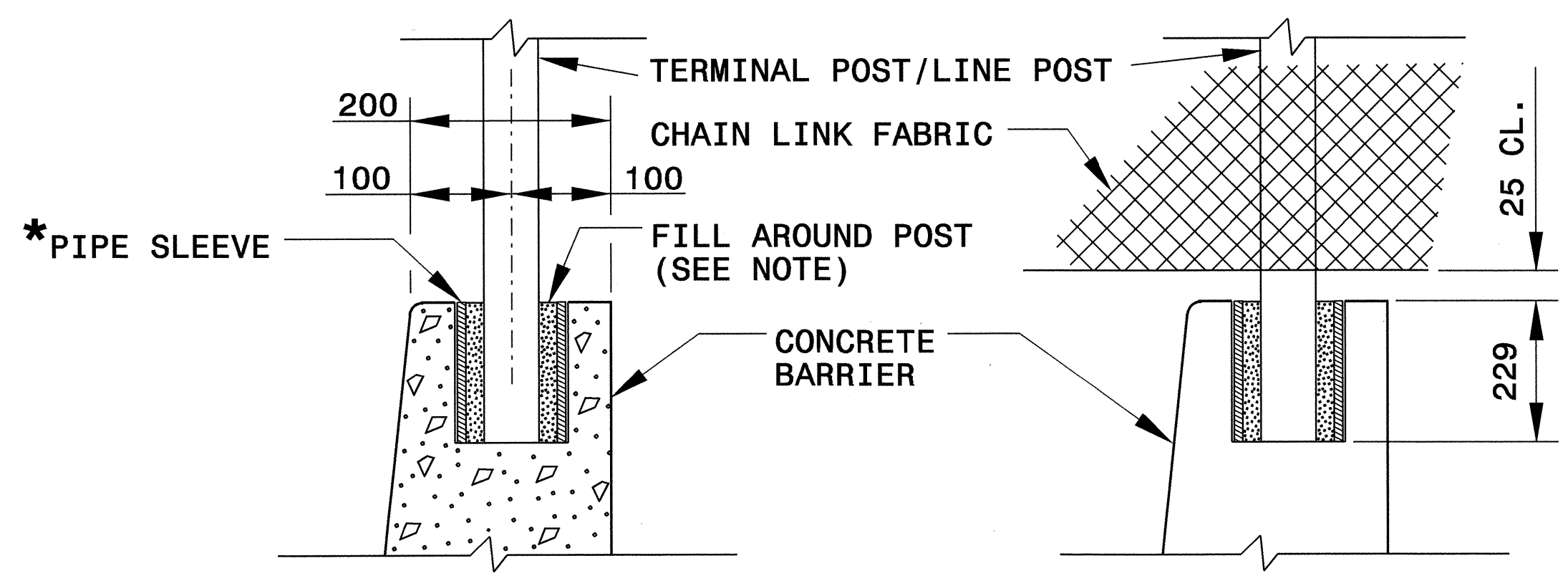
PLACEMENT OF PIPE SLEEVES SHALL CORRESPOND TO LINE POST AND TERMINAL POST AS SHOWN.

THE MIN. LENGTH OF LINE POST OR TERMINAL POST = 229mm (PIPE SLEEVE) + 25mm (CL.) + HEIGHT OF FENCE + CAP FOR PIPE POST.

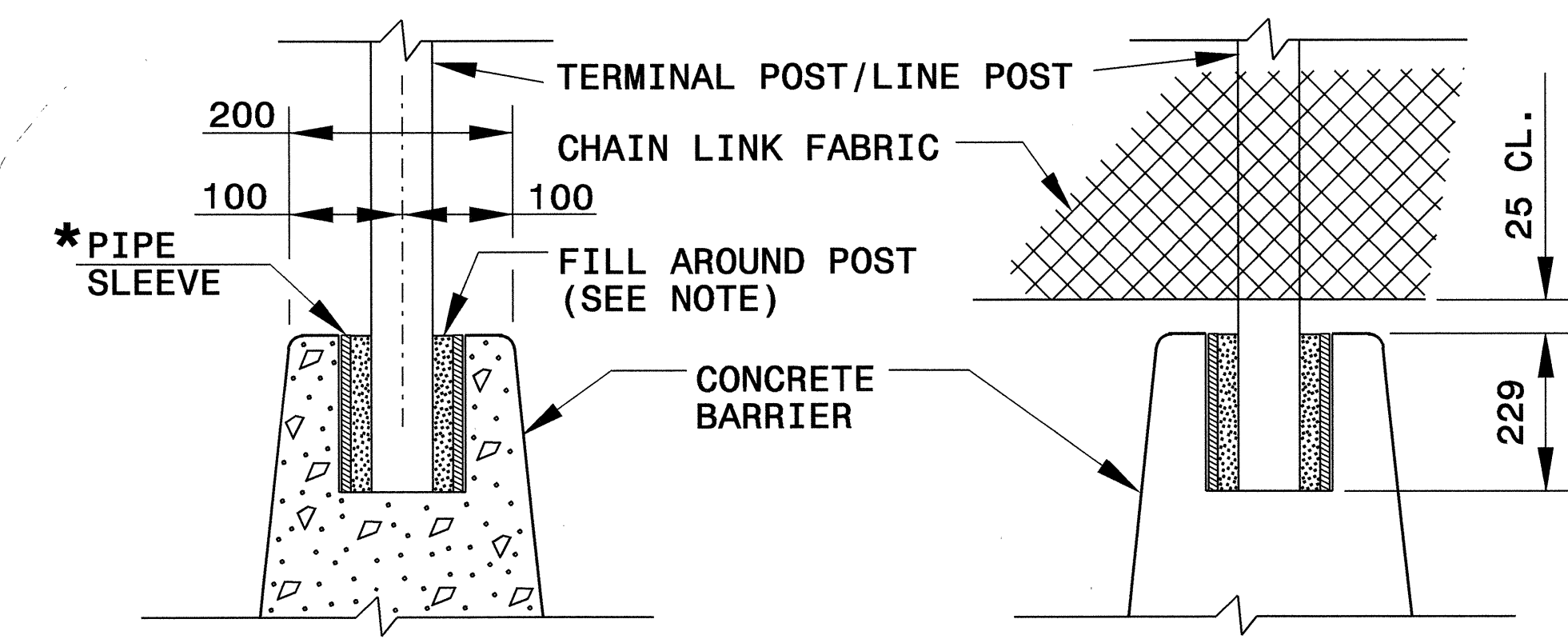
FILL SPACE BETWEEN POST AND PIPE WITH MOLTEN LEAD, SULPHUR, OR MATERIAL APPROVED BY ENGINEER.

**\* PIPE SLEEVES SHALL BE INSTALLED IN THE CONCRETE RETAINING WALL WITH COMPONENTS OF GALVANIZED STEEL POST OR ALUMINUM ALLOY POST AS INDICATED ...**

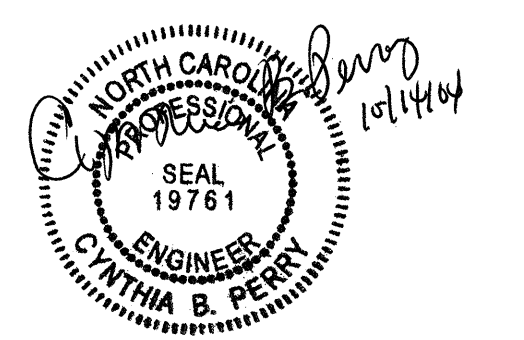
- ... GALVANIZED LINE POST (48mm O.D.): 64mm Ø x 229mm SLEEVE
- ... GALVANIZED TERMINAL POST (60mm O.D.): 76mm Ø x 229 SLEEVE
- ... ALUMINUM LINE POST (60mm O.D.): 76mm Ø x 229mm SLEEVE
- ... ALUMINUM TERMINAL POST (73mm O.D.): 89mm Ø X 229mm SLEEVE



SEE DETAIL 857D01 IN LIEU OF STANDARD FOR SINGLE FACED PRECAST REINFORCED CONCRETE BARRIER



SEE ROADWAY STANDARD DRAWING 854.02 FOR TYPE 'T' DOUBLE FACE CONCRETE BARRIER



### POST EMBEDMENT IN CONCRETE BARRIER

**Note:**  
This drawing is dimensioned in millimeters unless otherwise depicted within the drawing.

<b>DESIGN SERVICES UNIT</b>	
STANDARDS AND SPECIAL DESIGN	
Office 919-250-4128	FAX 919-250-4119
<b>CONCRETE BARRIER WITH GLARE SCREEN</b>	
ORIGINAL BY: H. SCHWAB	DATE: 10/02
MODIFIED BY: E. E. WARD	DATE: 02/03
CHECKED BY: <i>[Signature]</i>	DATE: 7/22/04
FILE SPEC.: <i>[Signature]</i>	

22-SEP-2004 10:37  
 W:\Special Details\Vericward\usr\details\Fence\chainlinkbarrier\glare\glare.dgn  
 .tspell AT D:\203855