

REVISIONS

DATUM DESCRIPTION

THE LOCALIZED COORDINATE SYSTEM DEVELOPED FOR THIS PROJECT IS BASED ON THE STATE PLANE COORDINATES ESTABLISHED BY N.C.DOT FOR MONUMENT " R2206-12 "

WITH NAD 83 STATE PLANE GRID COORDINATES OF
 NORTHING: 195,442.5400 (m) EASTING: 426,951.0780 (m)
 THE AVERAGE COMBINED GRID FACTOR USED ON THIS PROJECT

(GROUND TO GRID) IS: 0.99981257

THE N.C. LAMBERT GRID BEARING AND LOCALIZED HORIZONTAL GROUND DISTANCE FROM " R2206-12 " TO "L- STATION 10+00.000 " IS
 S 6 28 56.86 E 11,608.5082m

ALL LINEAR DIMENSIONS ARE LOCALIZED HORIZONTAL DISTANCES
 VERTICAL DATUM USED IS NGVD 1929

METRIC

5 0 10

CONST. REV.

R/W REV.

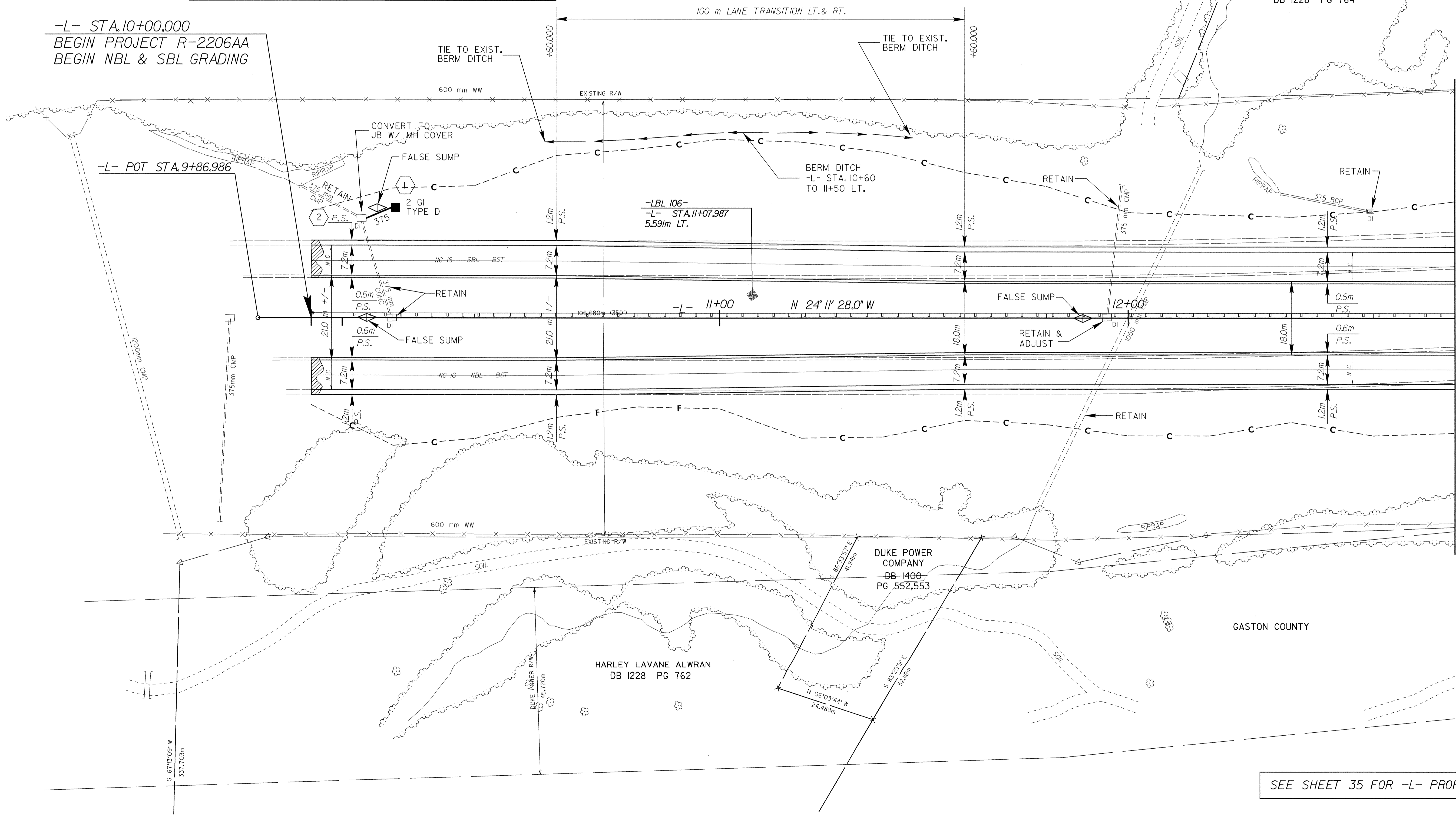
PROJECT REFERENCE NO. R-2206AA	SHEET NO. 4
R-2206A SHEET NO. 4	
ROADWAY DESIGN ENGINEER SEAL 15356 DONALD DAVID ALLEN	HYDRAULICS ENGINEER SEAL 9334 JERRY WELLS, III
10-8-04	10/21/04

CRESCENT LAND AND TIMBER CORP.
DB 1022 PG 765



HARLEY LAVANE ALWRAN
DB 1228 PG 764

-L- STA. 10+00.000
BEGIN PROJECT R-2206AA
BEGIN NBL & SBL GRADING



MATCHLINE SEE SHEET 5
-L- STA. 12 + 80.000

DUKE POWER COMPANY
DB 1400
PG 552,553

HARLEY LAVANE ALWRAN
DB 1228 PG 762

GASTON COUNTY

SEE SHEET 35 FOR -L- PROFILE

01-OCT-2004 10:07:22 gscad4.psh
SECallhoun