

METRIC

PROJECT REFERENCE NO. R-2206AA SHEET NO. 5

ROADWAY DESIGN ENGINEER: RONALD DAVID ALLEN, SEAL 15356, 10-8-04

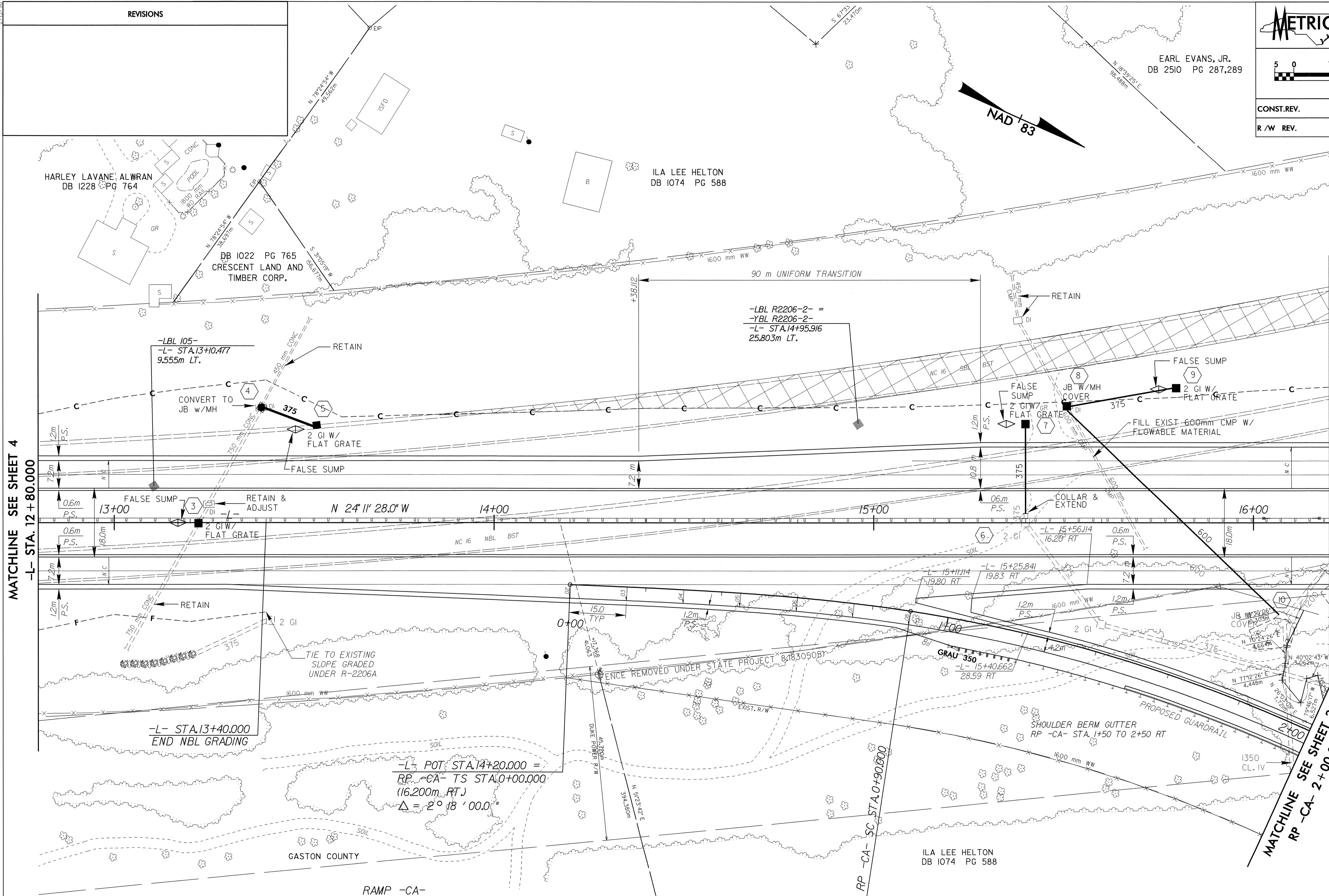
HYDRAULICS ENGINEER: HENRY WELLS, SEAL 9844, 1-12-104

CONST. REV.

R/W REV.

5 0 10

NAD 83



RAMP -CA-

Pls Sta 0+60.040	Pl Sta 1+64.136	Pls Sta 2+66.644
$\theta_s = 6^\circ 26' 44.8''$	$\Delta = 2^\circ 00' 00.0''$ (RT)	$\theta_s = 6^\circ 26' 44.8''$
$L_s = 90.000$	$L = 146.608$	$L_s = 90.000$
$LT = 60.040$	$T = 74.136$	$LT = 60.040$
$ST = 30.036$	$R = 400.000$	$ST = 30.036$
	$SE = 0.08$	
	$RO = 90.000$	

SEE SHEET 35 FOR -L- PROFILE
SEE SHEET 52 FOR RP -CA- PROFILE

01-OCT-2004 10:05 AM RD192296.dwg psh