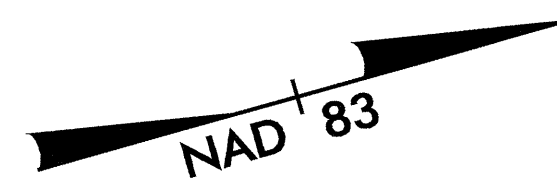


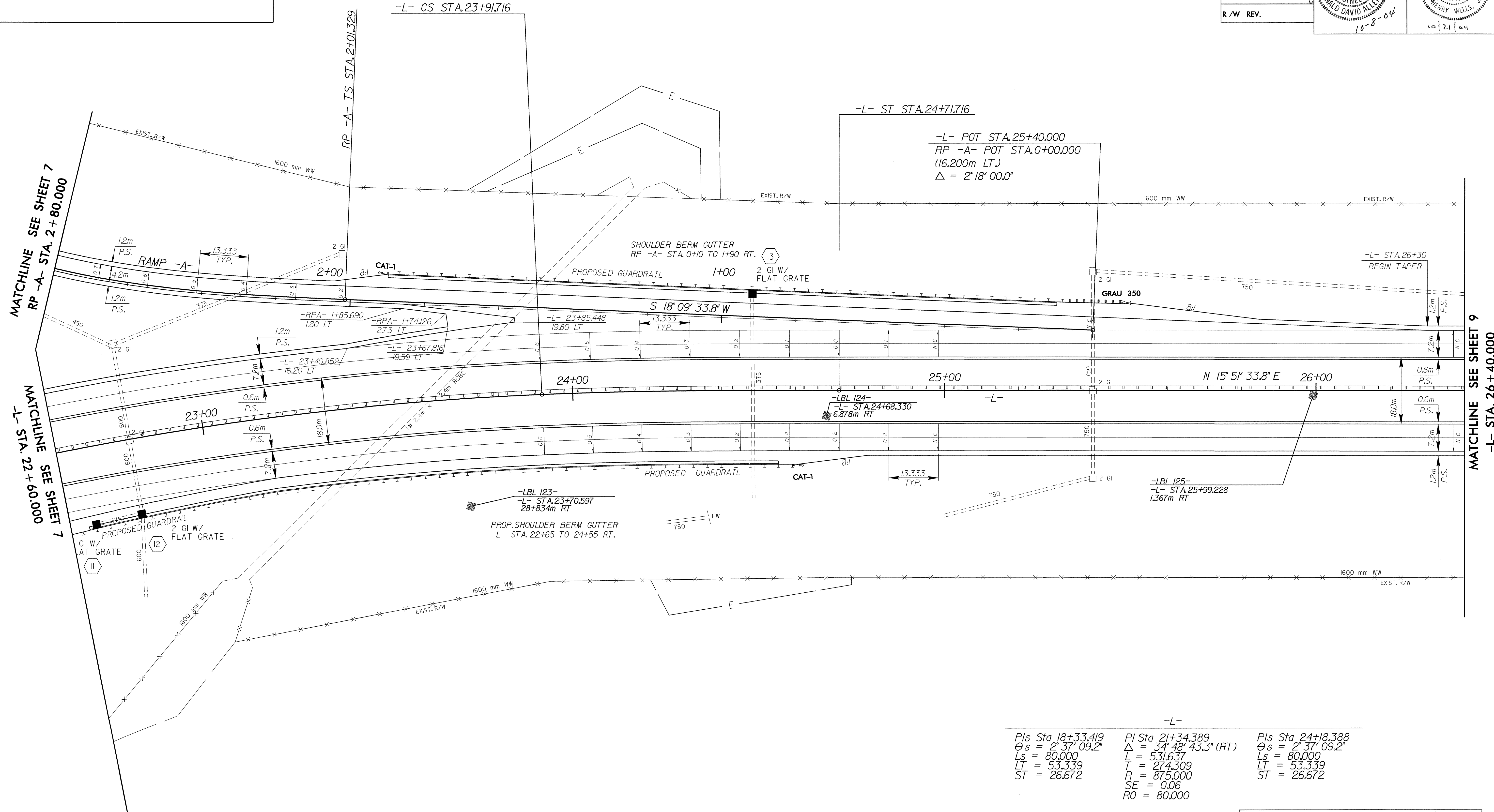
REVISIONS

RAMP -A-

Pls Sta 2+54.774	PI Sta 5+12.104	Pls Sta 6+50.785
$\Theta_s = 11^\circ 27' 33.0''$	$\Delta = 98^\circ 10' 22.2''$ (RT)	$\Theta_s = 11^\circ 27' 33.0''$
$L_s = 80.000$	$L = 342.688$	$L_s = 80.000$
$LT = 53.446$	$T = 230.776$	$LT = 53.446$
$ST = 26.769$	$R = 200.000$	$ST = 26.769$
	$SE = 0.08$	
	$RO = 80.000$	



	PROJECT REFERENCE NO.	SHEET NO.
	R-2206AA	8
	R-2206A SHEET NO.	8
	ROADWAY DESIGN ENGINEER	HYDRAULICS ENGINEER
CONST. REV.		
R/W REV.		



Pls Sta 18+33.419	PI Sta 21+34.389	Pls Sta 24+18.388
$\Theta_s = 2^\circ 37' 09.2''$	$\Delta = 34^\circ 48' 43.3''$ (RT)	$\Theta_s = 2^\circ 37' 09.2''$
$L_s = 80.000$	$L = 531.637$	$L_s = 80.000$
$LT = 53.339$	$T = 274.309$	$LT = 53.339$
$ST = 26.672$	$R = 875.000$	$ST = 26.672$
	$SE = 0.06$	
	$RO = 80.000$	

SEE SHEETS 36 & 37 FOR -L- PROFILE  
SEE SHEET 58 FOR RP -A- PROFILE

30-SEP-2004 15:53:22 RD192296-08.psh  
SECalhoun AT RD192296