

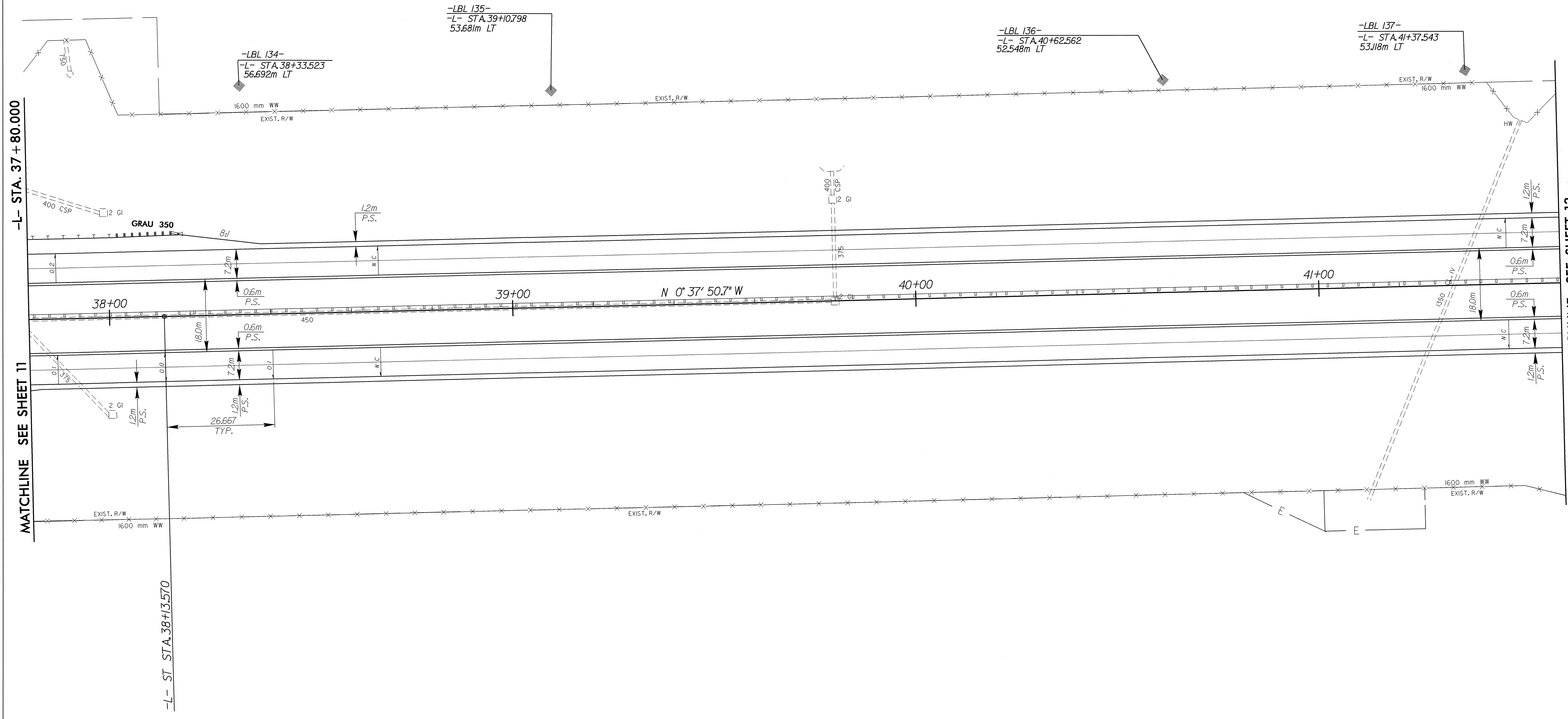
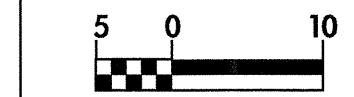
REVISIONS

-L-

Pls Sta 31+16.313	PI Sta 34+39.865	Pls Sta 37+60.237
$\theta_s = 0^\circ 59' 01.0''$	$\Delta = 14^\circ 31' 22.5''$ (LT)	$\theta_s = 0^\circ 59' 01.0''$
$L_s = 80.000$	$L = 590.591$	$L_s = 80.000$
$LT = 53.334$	$T = 296.887$	$LT = 53.334$
$ST = 26.667$	$R = 2,330.000$	$ST = 26.667$
	$SE = 0.03$	
	$RO = 80.000$	



PROJECT REFERENCE NO. R-2206AA	SHEET NO. 12
R-2206A SHEET NO.	12
ROADWAY DESIGN ENGINEER NORTH CAROLINA PROFESSIONAL ENGINEER SEAL 15356 RONALD DAVID ALLEN 10-8-04	HYDRAULICS ENGINEER NORTH CAROLINA PROFESSIONAL ENGINEER SEAL 9384 MERRY WELLS, III 10/21/04
CONST. REV.	
R/W REV.	



MATCHLINE SEE SHEET 11

MATCHLINE SEE SHEET 13

SEE SHEET 39 & 40 FOR -L- PROFILE

30-SEP-2004 15:41
RD192296.dwg
RD192296.dwg