
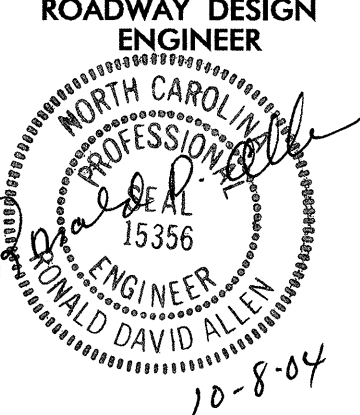
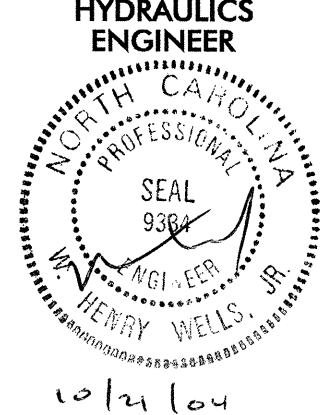
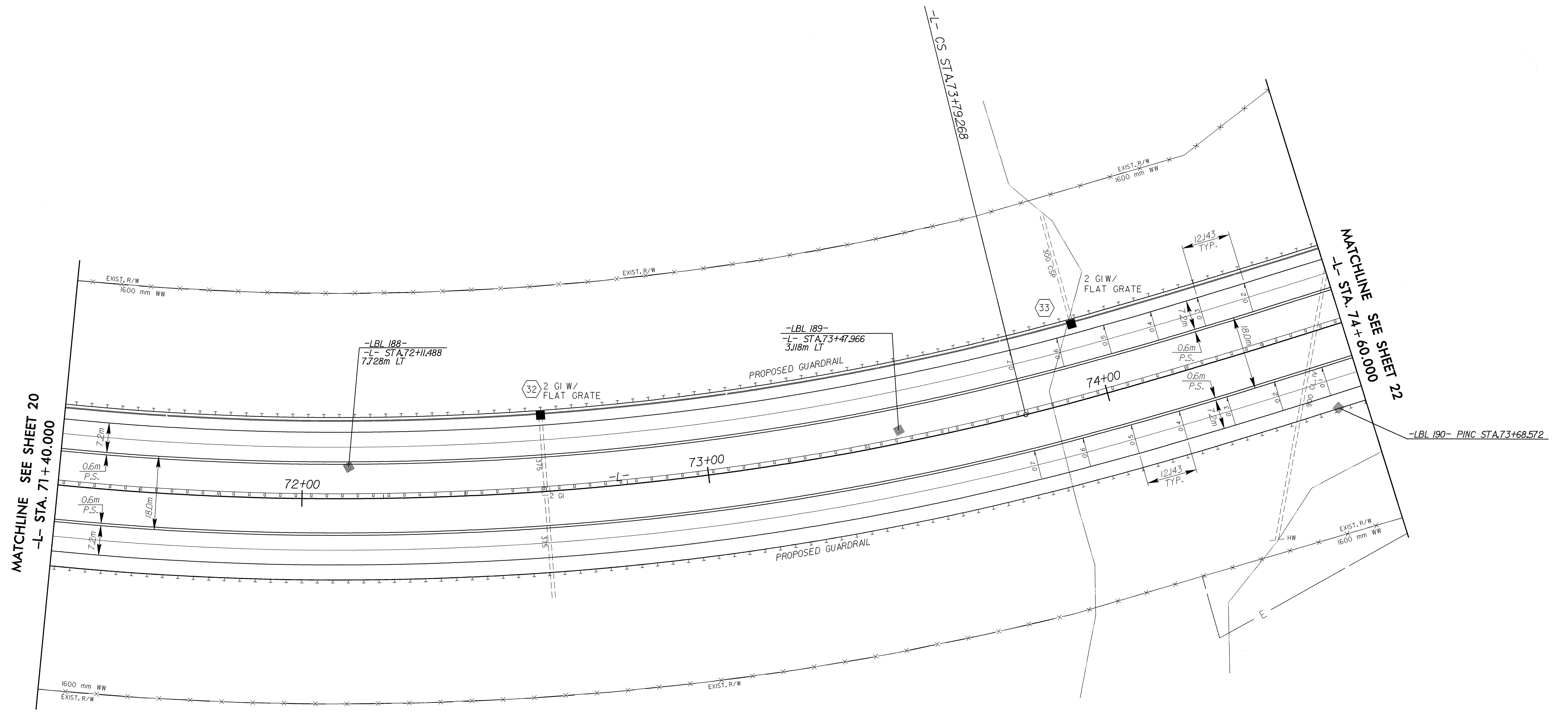
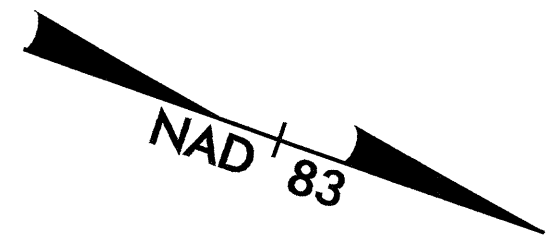
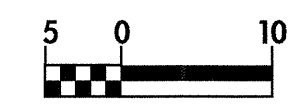


REVISIONS

-L-		
Pls Sta 69+96.316	Pls Sta 72+05.846	Pls Sta 74+07.611
$\theta_s = 3^\circ 28' 43.2''$	$\Delta = 29^\circ 01' 36.6''$ (LT)	$\theta_s = 3^\circ 28' 43.2''$
$L_s = 85.000$	$L = 354.630$	$L_s = 85.000$
$LT = 56.678$	$T = 181.207$	$LT = 56.678$
$ST = 28.343$	$R = 700.000$	$ST = 28.343$
	$SE = 0.07$	
	$RO = 85.000$	

	PROJECT REFERENCE NO.	SHEET NO.
	R-2206AA	21
	R-2206A SHEET NO.	21
	ROADWAY DESIGN ENGINEER	HYDRAULICS ENGINEER
		
CONST. REV.		
R/W REV.		



MATCHLINE SEE SHEET 20
-L- STA. 71+40.000

MATCHLINE SEE SHEET 22
-L- STA. 74+60.000

SEE SHEET 44 FOR -L- PROFILE

30-SEP-2004 15:37
RD192296.psh
SECalloun rd-09oce34