

REVISIONS

-L-

Pls Sta 69+96.316
 $\theta_s = 3^\circ 28' 43.2''$
 $L_s = 85.000$
 $LT = 56.678$
 $ST = 28.343$

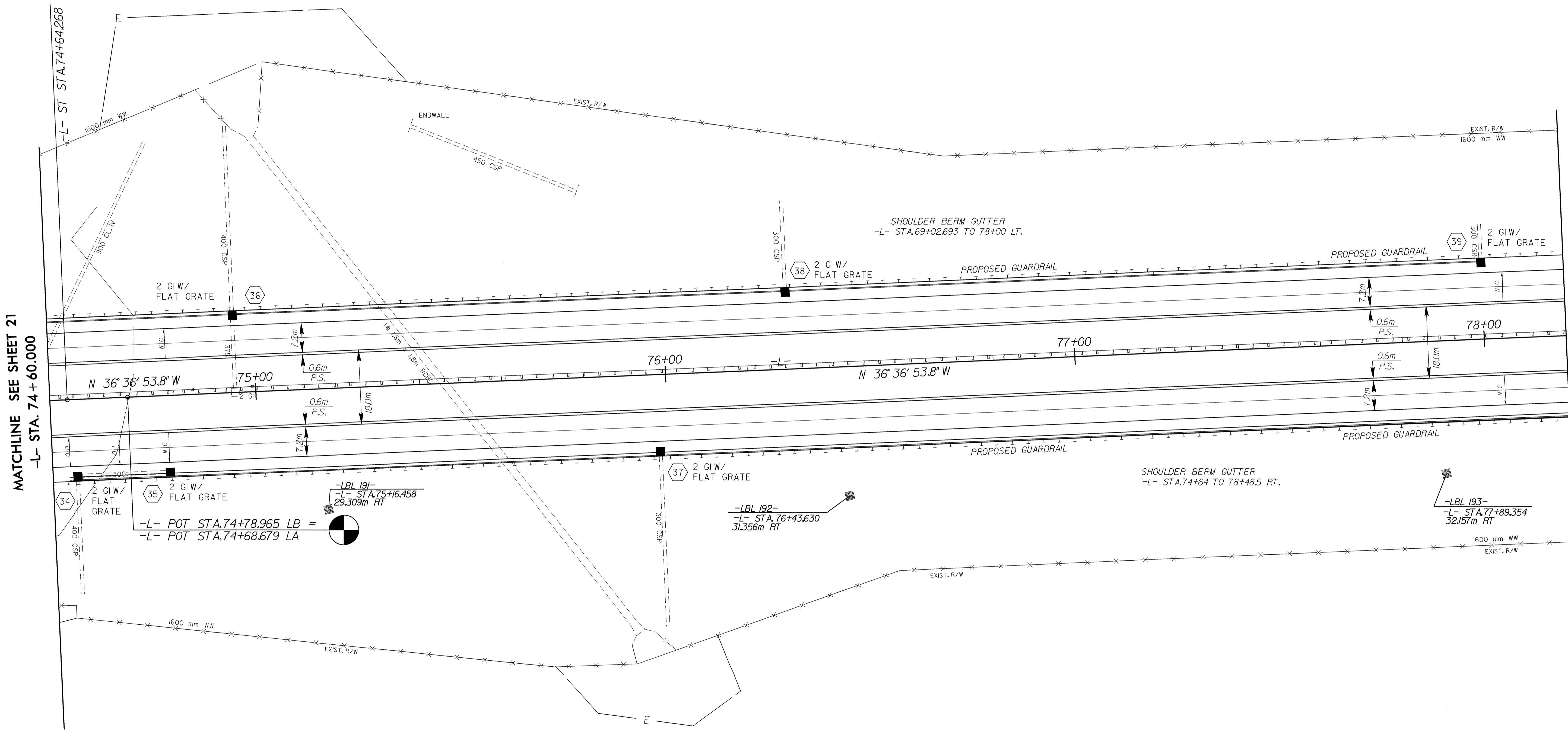
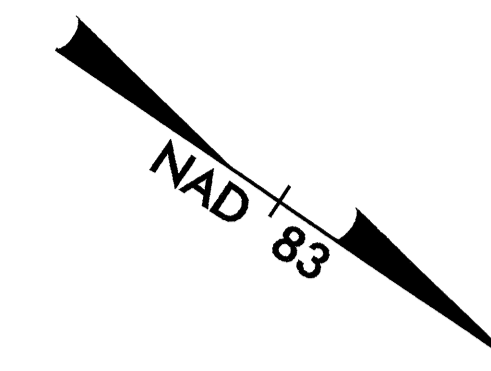
PI Sta 72+05.846
 $\Delta = 29^\circ 01' 36.6''$ (LT)
 $L = 354.630$
 $T = 181.207$
 $R = 700.000$
 $SE = 0.07$
 $RO = 85.000$

Pls Sta 74+07.611
 $\theta_s = 3^\circ 28' 43.2''$
 $L_s = 85.000$
 $LT = 56.678$
 $ST = 28.343$

METRIC

CONST. REV.
 R/W REV.

| | |
|--|---|
| PROJECT REFERENCE NO. R-2206AA | SHEET NO. 22 |
| R-2206A SHEET NO. 22 | |
| ROADWAY DESIGN ENGINEER RONALD DAVID ALLEN | HYDRAULICS ENGINEER W. HENRY WELLS, JR. |
| 10-8-04 | 10/21/04 |



MATCHLINE SEE SHEET 21
 -L- STA. 74 + 60.000

MATCHLINE SEE SHEET 23
 -L- STA. 78 + 20.000

SEE SHEET 45 & 46 FOR -L- PROFILE

30-SEP-2004 16:37 RD192296ao22.psh
 SEC:alhoun