
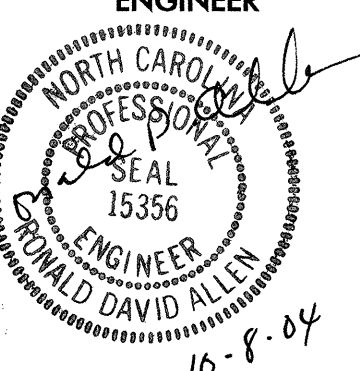

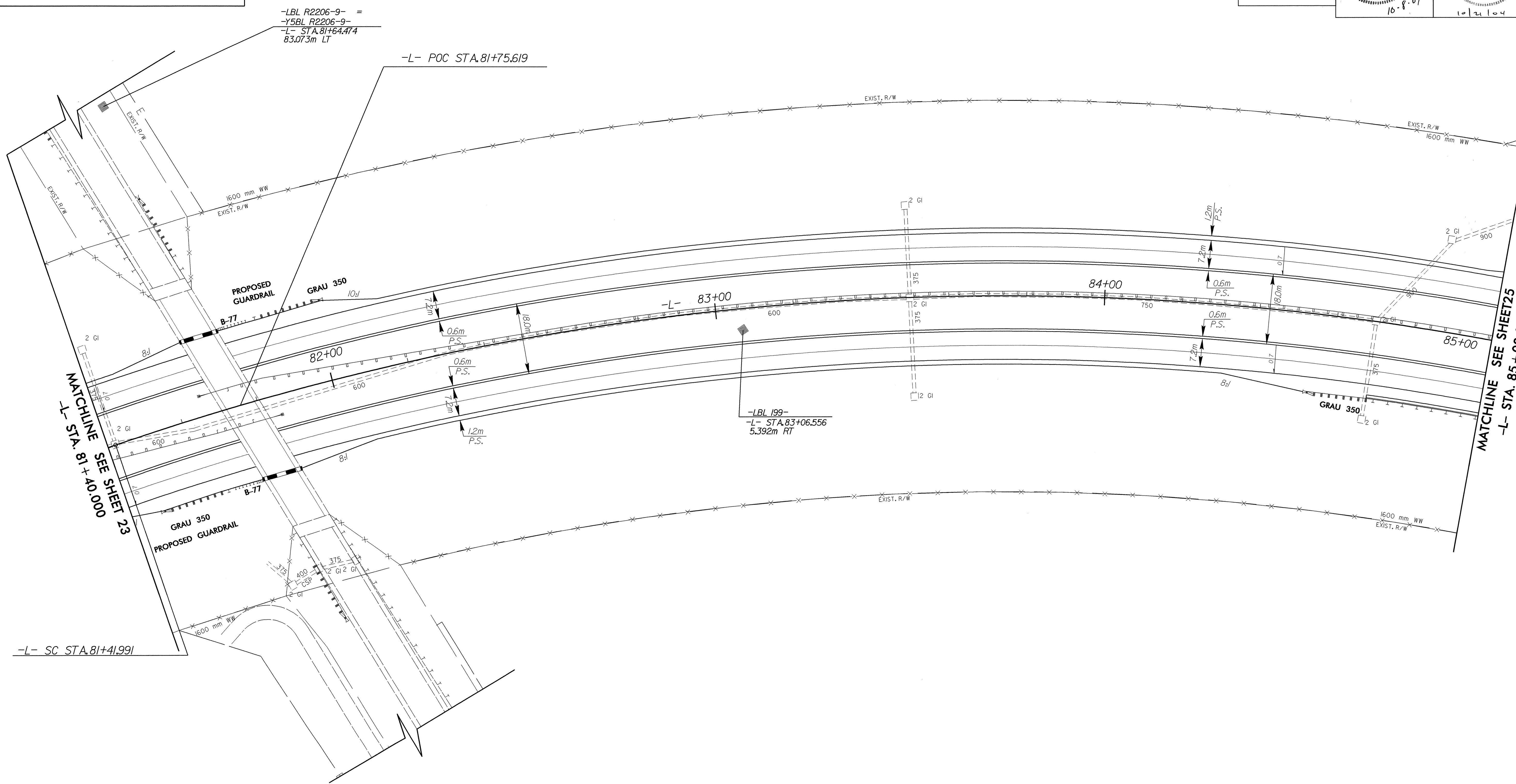
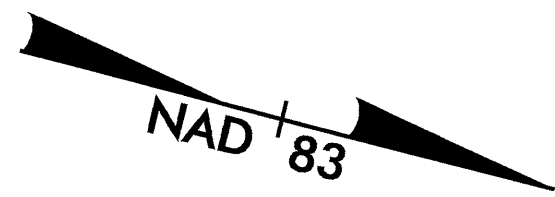


REVISIONS

-L-

<i>Pls Sta 81+13.668</i>	<i>Pl Sta 83+56.319</i>	<i>Pls Sta 85+86.302</i>
$\theta_s = 3^\circ 28' 43.2''$	$\Delta = 34^\circ 02' 50.8''$ (RT)	$\theta_s = 3^\circ 28' 43.2''$
$L_s = 85.000$	$L = 415.968$	$L_s = 85.000$
$LT = 56.678$	$T = 214.329$	$LT = 56.678$
$ST = 28.343$	$R = 700.000$	$ST = 28.343$
	$SE = 0.07$	
	$RO = 85.000$	

 5 0 10 CONST. REV. R/W REV.	PROJECT REFERENCE NO. <b>R-2206AA</b>	SHEET NO. <b>24</b>
	R-2206A SHEET NO. <b>24</b>	ROADWAY DESIGN ENGINEER  DONALD DAVID ALLEN 10-8-04
	HYDRAULICS ENGINEER  HENRY WELLS 10-21-04	



SEE SHEET 46 FOR -L- PROFILE

30-SEP-04 16:35:22 RD192296\psh24\psh24.dwg