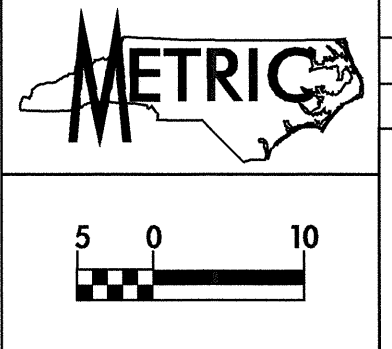


2/13/98

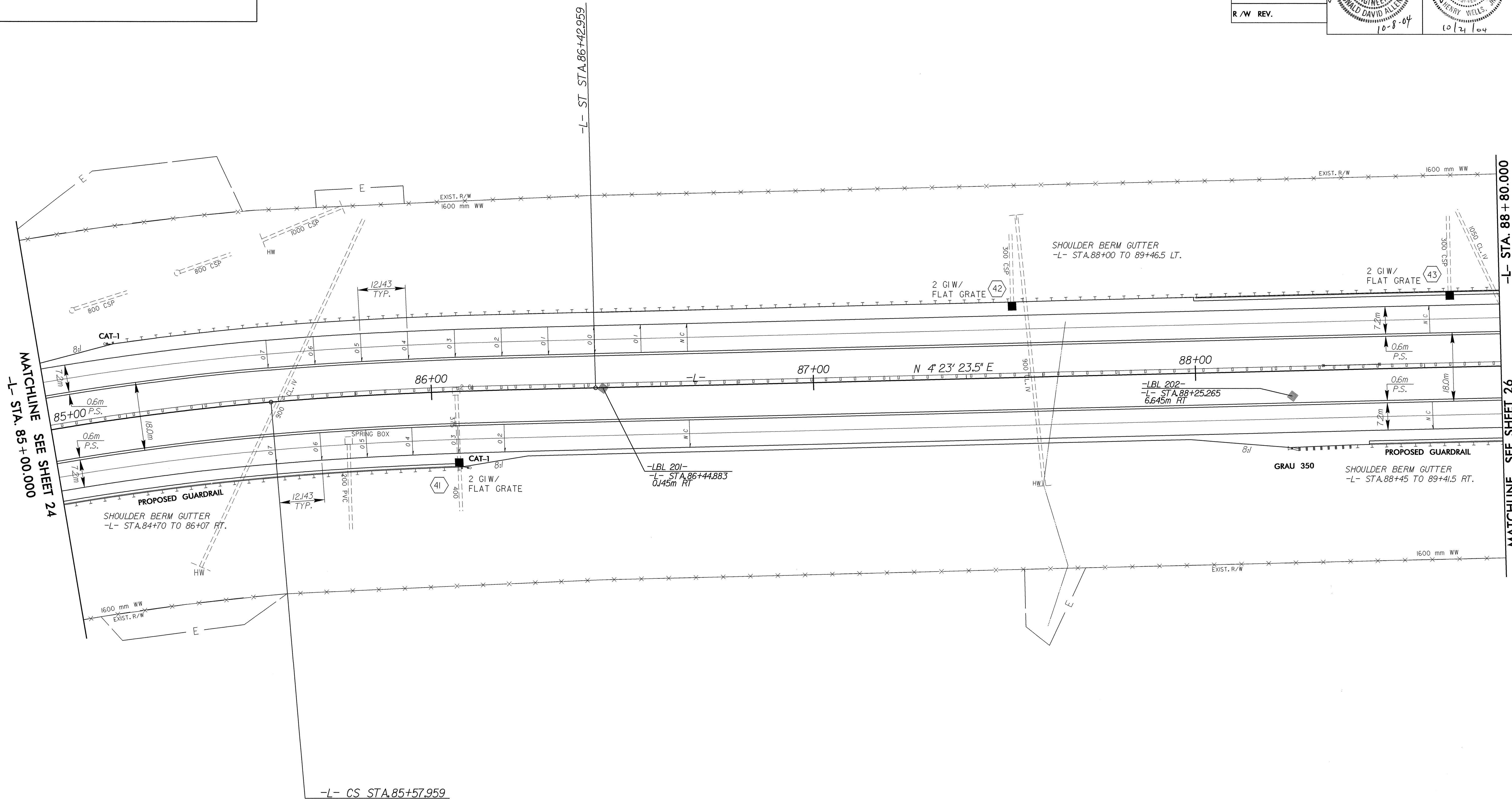
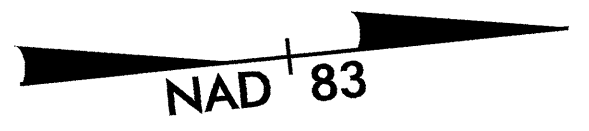
REVISIONS

-L-

Pls Sta 81+13.668 *PI Sta 83+56.319* *Pls Sta 85+86.302*
 $\theta_s = 3^\circ 28' 43.2''$ $\Delta = 34^\circ 02' 50.8''$ (RT) $\theta_s = 3^\circ 28' 43.2''$
 $L_s = 85.000$ $L = 415.968$ $L_s = 85.000$
 $LT = 56.678$ $T = 214.329$ $LT = 56.678$
 $ST = 28.343$ $R = 700.000$ $ST = 28.343$
 $SE = 0.07$
 $RO = 85.000$



PROJECT REFERENCE NO. R-2206AA	SHEET NO. 25
ROADWAY DESIGN ENGINEER NORTH CAROLINA PROFESSIONAL SEAL 15356 RONALD DAVID ALLEN 10-8-04	HYDRAULICS ENGINEER NORTH CAROLINA PROFESSIONAL SEAL 9336 HENRY WELLS 10/21/04
CONST. REV.	
R/W REV.	



MATCHLINE SEE SHEET 24
-L- STA. 85+00.000

MATCHLINE SEE SHEET 26
-L- STA. 88+80.000

SEE SHEET 46 & 47 FOR -L- PROFILE

30-SEP-2004 16:55:22 RD192296.ec25.psh
SECalhoun