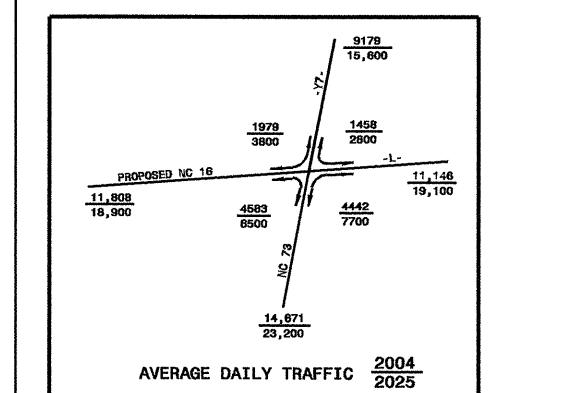


REVISIONS



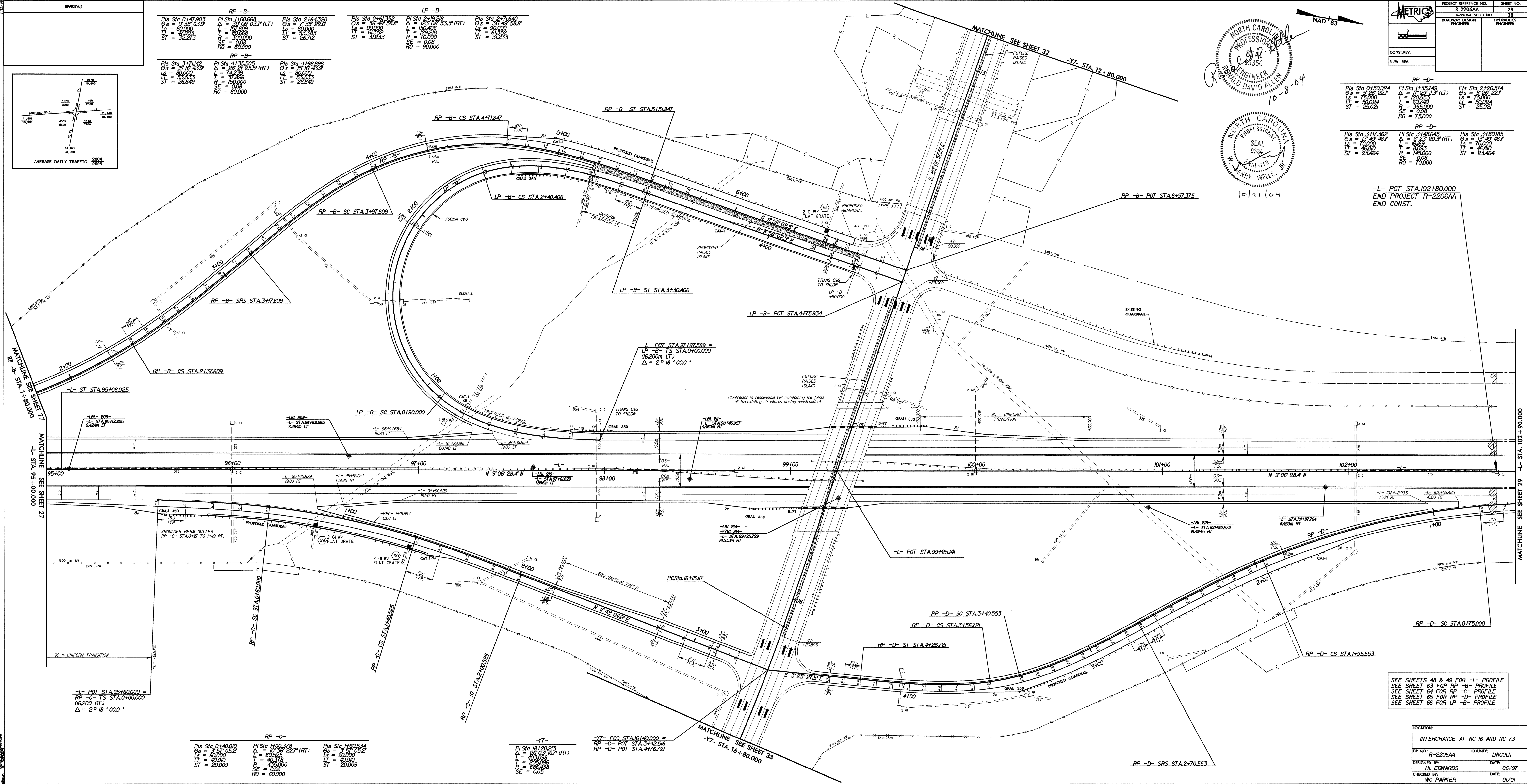
RP -B-			LP -B-		
Pls Sta 0+17.803	Pl Sta 1+60.668	Pls Sta 2+64.320	Pls Sta 0+16.352	Pl Sta 2+19.218	Pls Sta 2+17.640
Os = 80.000	Os = 37.706	Os = 77.722	Os = 80.000	Os = 150.408	Os = 80.000
Ls = 80.000	Ls = 17.963	Ls = 80.000	Ls = 80.000	Ls = 150.408	Ls = 80.000
St = 32.273	St = 17.963	St = 26.712	St = 31.233	St = 31.233	St = 31.233
Rs = 80.000	Rs = 80.000	Rs = 80.000	Rs = 80.000	Rs = 80.000	Rs = 80.000

RP -B-			LP -B-		
Pls Sta 3+71.442	Pl Sta 4+35.505	Pls Sta 4+98.636	Pls Sta 3+17.382	Pl Sta 3+48.645	Pls Sta 3+80.855
Os = 16.133	Os = 174.250	Os = 16.133	Os = 13.854	Os = 6.233	Os = 13.854
Ls = 80.000	Ls = 174.250	Ls = 80.000	Ls = 70.000	Ls = 16.653	Ls = 70.000
St = 54.543	St = 37.756	St = 54.543	Ls = 46.810	Ls = 8.093	Ls = 46.810
Rs = 26.849	Rs = 150.000	Rs = 26.849	St = 23.464	St = 145.000	St = 23.464
	Rs = 80.000			Rs = 75.000	

RP -B-			LP -B-		
Pls Sta 0+140.000	Pl Sta 1+00.378	Pls Sta 1+80.254	Pls Sta 1+16+80.000	Pls Sta 1+16+80.000	Pls Sta 1+16+80.000
Os = 3.370	Os = 10.362	Os = 3.370	Os = 10.362	Os = 10.362	Os = 10.362
Ls = 60.000	Ls = 60.000	Ls = 60.000	Ls = 60.000	Ls = 60.000	Ls = 60.000
St = 20.009	St = 20.009	St = 20.009	St = 20.009	St = 20.009	St = 20.009
Rs = 60.000	Rs = 60.000	Rs = 60.000	Rs = 60.000	Rs = 60.000	Rs = 60.000

RP -C-			-Y-		
Pls Sta 0+140.000	Pl Sta 1+00.378	Pls Sta 1+80.254	Pl Sta 1+16+80.000	Pl Sta 1+16+80.000	Pl Sta 1+16+80.000
Os = 3.370	Os = 10.362	Os = 3.370	Os = 10.362	Os = 10.362	Os = 10.362
Ls = 60.000	Ls = 60.000	Ls = 60.000	Ls = 60.000	Ls = 60.000	Ls = 60.000
St = 20.009	St = 20.009	St = 20.009	St = 20.009	St = 20.009	St = 20.009
Rs = 60.000	Rs = 60.000	Rs = 60.000	Rs = 60.000	Rs = 60.000	Rs = 60.000

PROJECT REFERENCE NO. R-2206AA SHEET NO. 28  
 R-2206AA SHEET NO. 28  
 ROADWAY DESIGN HYDRAULICS ENGINEER  
 NORTH CAROLINA PROFESSIONAL ENGINEER  
 9334  
 SEAL  
 10-8-04  
 10/21/04



SEE SHEETS 48 & 49 FOR -L- PROFILE  
 SEE SHEET 63 FOR RP -B- PROFILE  
 SEE SHEET 64 FOR RP -C- PROFILE  
 SEE SHEET 65 FOR RP -D- PROFILE  
 SEE SHEET 66 FOR LP -B- PROFILE

LOCATION: INTERCHANGE AT NC 16 AND NC 73	
TR NO: R-2206AA	COUNTY: LINCOLN
DESIGNED BY: HL EDWARDS	DATE: 06/97
CHECKED BY: WC PARKER	DATE: 01/01