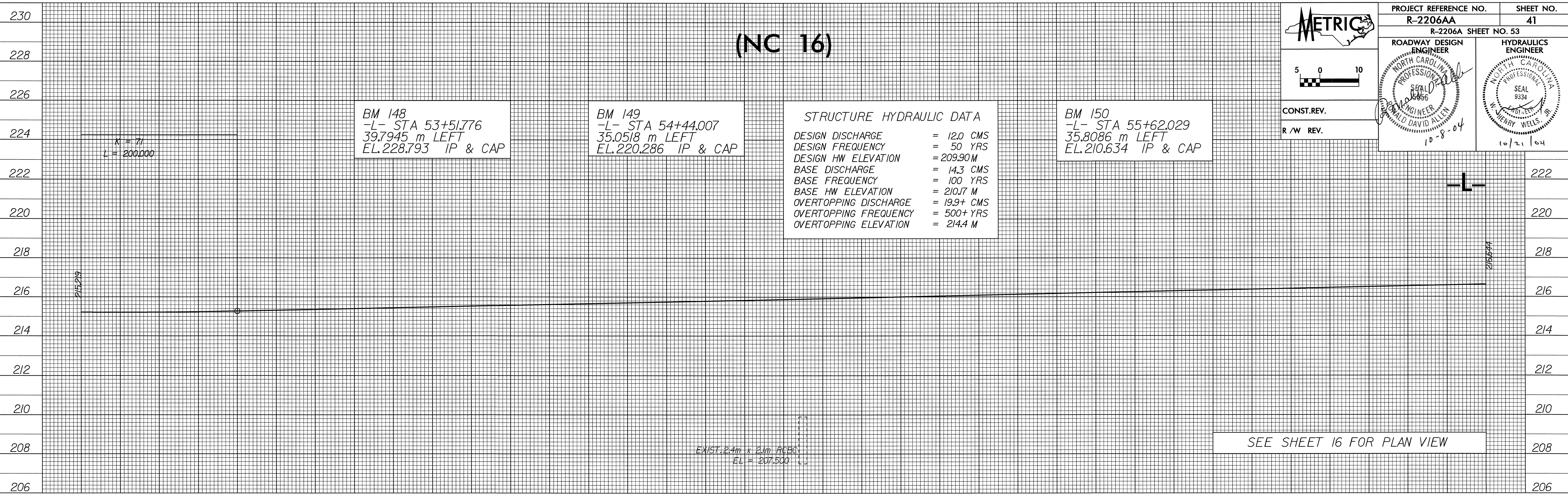


10/26/08

21-SEP-2004 07:51
SECalhoun rd-09oce34



METRIC

5 0 10

CONST. REV.

R/W REV.

PROJECT REFERENCE NO.	R-2206AA	SHEET NO.	41
R-2206A SHEET NO. 53			
ROADWAY DESIGN ENGINEER	HYDRAULICS ENGINEER		
SEAL 10/26/08	SEAL 9334		
DAVID ALLEN	M. WERRY WELLS, JR.		
10-8-04	10/21/04		

