

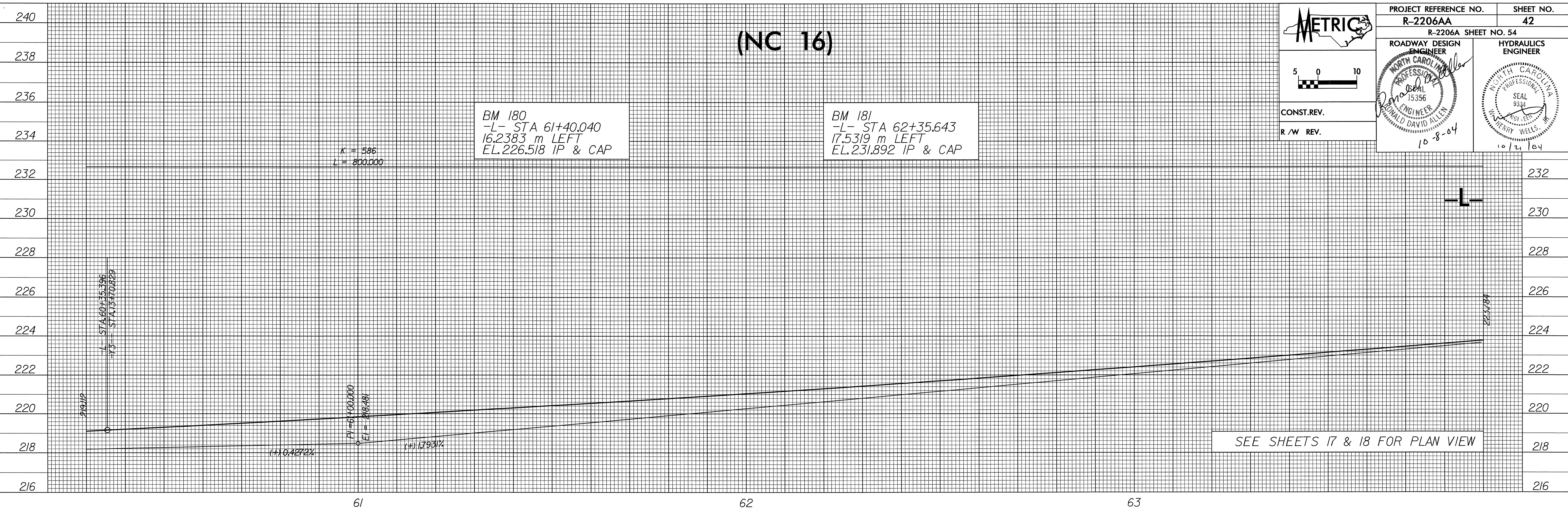
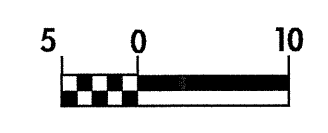
10/26/04

21-SEP-2004 07:51  
SECalhoun rd-090ce34

# (NC 16)



PROJECT REFERENCE NO. <b>R-2206AA</b>	SHEET NO. <b>42</b>
R-2206A SHEET NO. 54	
ROADWAY DESIGN ENGINEER <i>Donald David Allen</i>	HYDRAULICS ENGINEER <i>Henry Wells</i>
PROFESSIONAL SEAL 15356 DONALD DAVID ALLEN 10-8-04	PROFESSIONAL SEAL 9334 HENRY WELLS 10/21/04
CONST. REV.	
R/W REV.	



# (NC 16)

STRUCTURE HYDRAULIC DATA

DESIGN DISCHARGE	= 22.0 CMS
DESIGN FREQUENCY	= 50 YRS
DESIGN HW ELEVATION	= 215.70 M
BASE DISCHARGE	= 26.3 CMS
BASE FREQUENCY	= 100 YRS
BASE HW ELEVATION	= 216.18 M
OVERTOPPING DISCHARGE	= 36.7+ CMS
OVERTOPPING FREQUENCY	= 500+ YRS
OVERTOPPING ELEVATION	= 226.2 M

