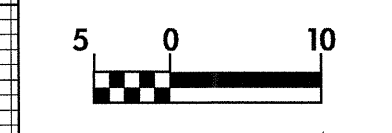


(NC 16)



PROJECT REFERENCE NO. R-2206AA	SHEET NO. 45
R-2206A SHEET NO. 57	
ROADWAY DESIGN ENGINEER NORTH CAROLINA PROFESSIONAL SEAL 15356 DAVID ALLEN 10-8-04	HYDRAULICS ENGINEER NORTH CAROLINA PROFESSIONAL SEAL 9334 HENRY WELLS 10/21/04



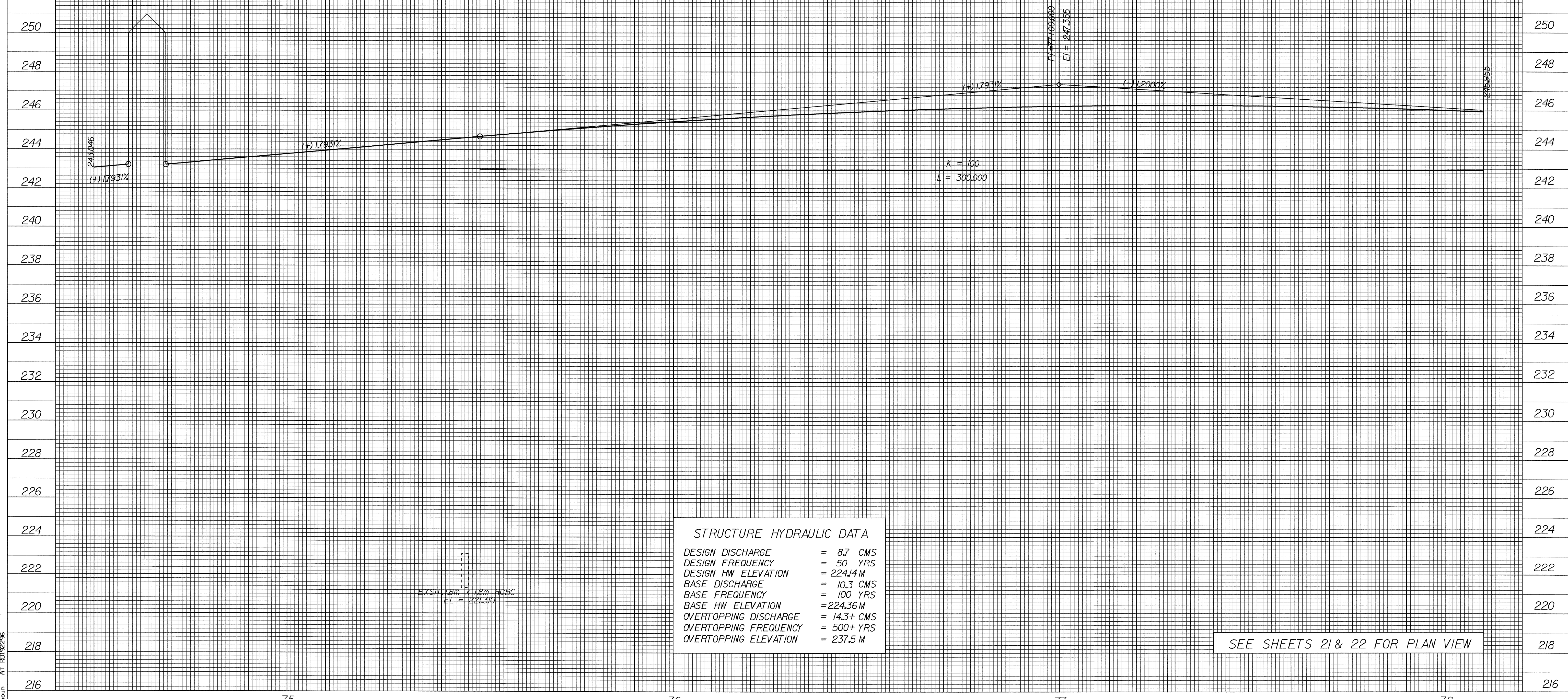
CONST. REV.
R/W REV.

BM 191
-L- STA 75+16.458
29.3090 m RIGHT
EL.226.262 IP & CAP

BM 192
-L- STA 76+43.630
31.3558 m RIGHT
EL.232.864 IP & CAP

BM 193
-L- STA 77+89.354
32.1568 m RIGHT
EL.239.331 IP & CAP

EQ. -L- STA 74+78.965 L.B. -
-L- STA 74+68.679 L.A.
EL.243.207



STRUCTURE HYDRAULIC DATA

DESIGN DISCHARGE	= 8.7 CMS
DESIGN FREQUENCY	= 50 YRS
DESIGN HW ELEVATION	= 224.14M
BASE DISCHARGE	= 10.3 CMS
BASE FREQUENCY	= 100 YRS
BASE HW ELEVATION	= 224.36M
OVERTOPPING DISCHARGE	= 14.3+ CMS
OVERTOPPING FREQUENCY	= 500+ YRS
OVERTOPPING ELEVATION	= 237.5 M

SEE SHEETS 21 & 22 FOR PLAN VIEW

21-SEP-2004 01:49
SEC/houn

75

76

77

78