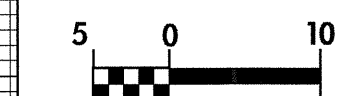


(NC 16)



PROJECT REFERENCE NO. R-2206AA	SHEET NO. 46
R-2206A SHEET NO. 58	
ROADWAY DESIGN ENGINEER DAVID ALLEN 10-8-04	HYDRAULICS ENGINEER HENRY WELLS 10/21/04

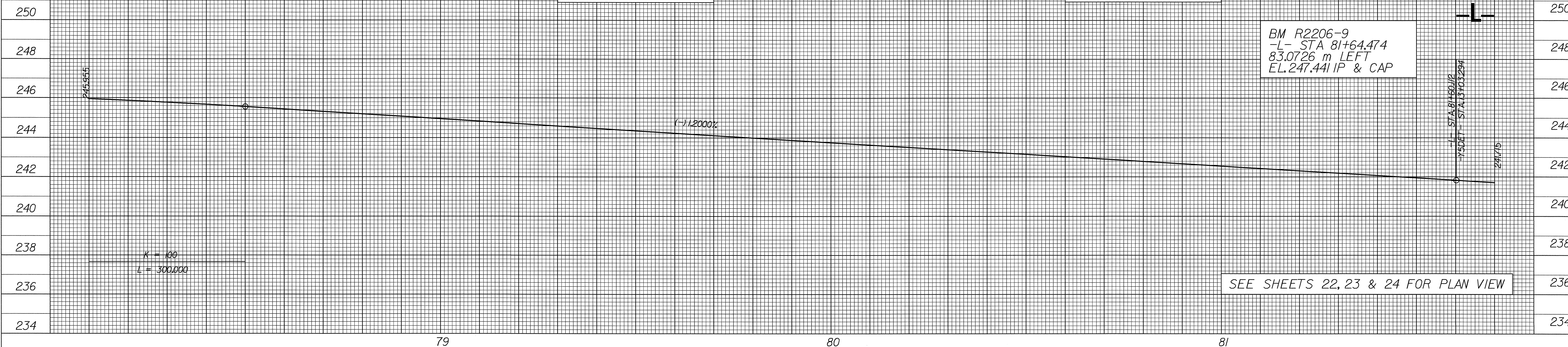


CONST. REV.
R/W REV.

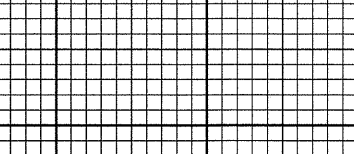
BM 194
-L- STA 79+45.173
31.7386 m RIGHT
EL. 247.022 IP & CAP

BM 195
-L- STA 81+02.118
31.3158 m RIGHT
EL. 244.138 IP & CAP

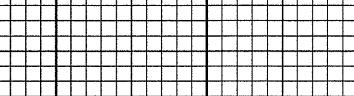
BM R2206-9
-L- STA 81+64.474
83.0726 m LEFT
EL. 247.441 IP & CAP



(NC 16)



PROJECT REFERENCE NO. R-2206AA	SHEET NO. 46
R-2206A SHEET NO. 58	
ROADWAY DESIGN ENGINEER DAVID ALLEN 10-8-04	HYDRAULICS ENGINEER HENRY WELLS 10/21/04

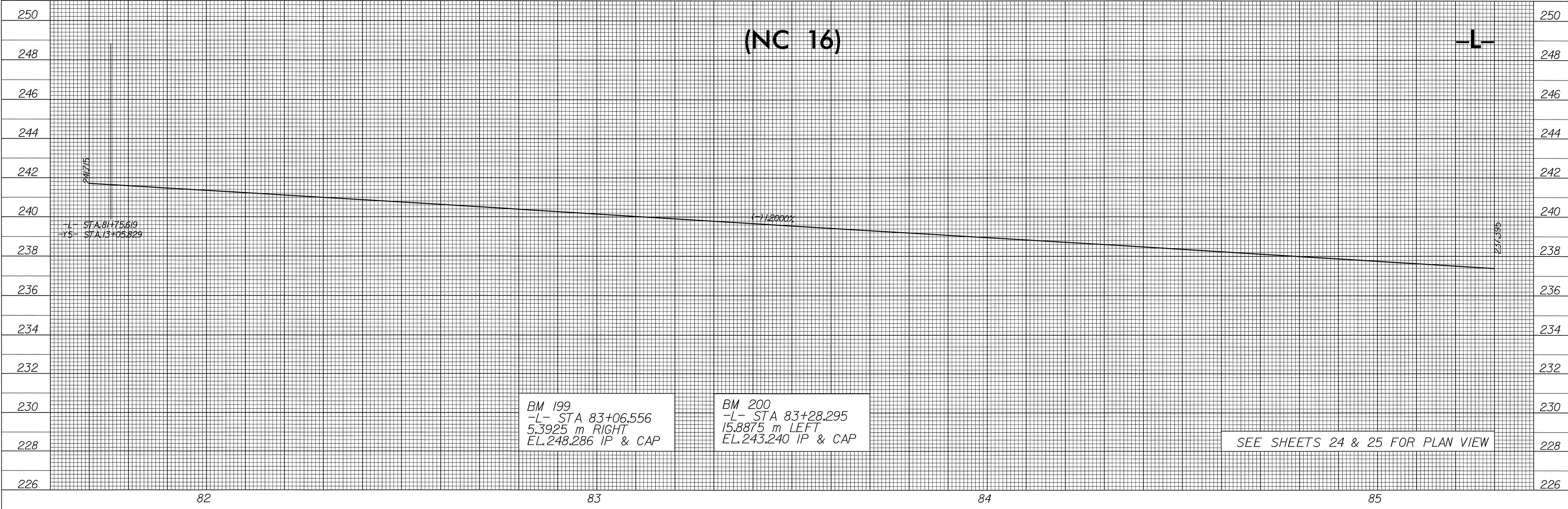


CONST. REV.
R/W REV.

BM 199
-L- STA 83+06.556
5.3925 m RIGHT
EL. 248.286 IP & CAP

BM 200
-L- STA 83+28.295
15.8875 m LEFT
EL. 243.240 IP & CAP

SEE SHEETS 24 & 25 FOR PLAN VIEW



RD192296 Thursday September 30 2004 pfl46 58 SECalhoun rd-09oce34